

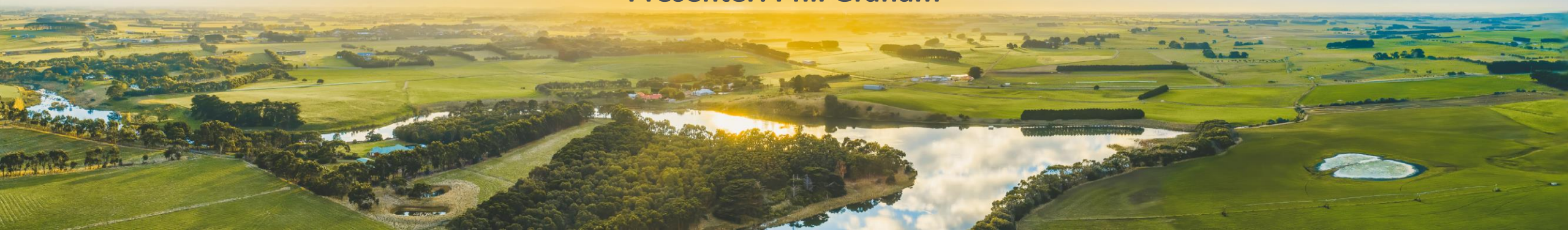


# PRODUCTIVITY & PROFITABILITY



**Seasonal Update - What the forecast means and the implications for producers**

Presenter: Phil Graham



# Housekeeping

- Webinar is being recorded
- Ask Questions using slido icon on your screen



- OR go to [slido.com](https://slido.com) and enter #ppaugust

# Tonight's Speaker – Phil Graham



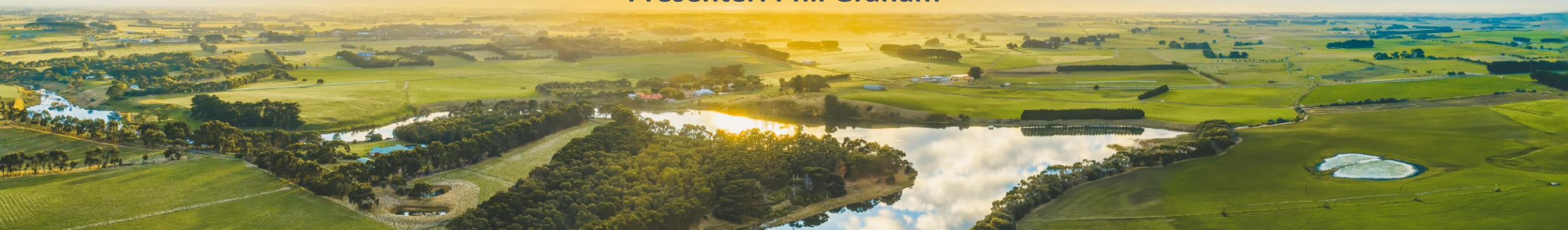


# PRODUCTIVITY & PROFITABILITY

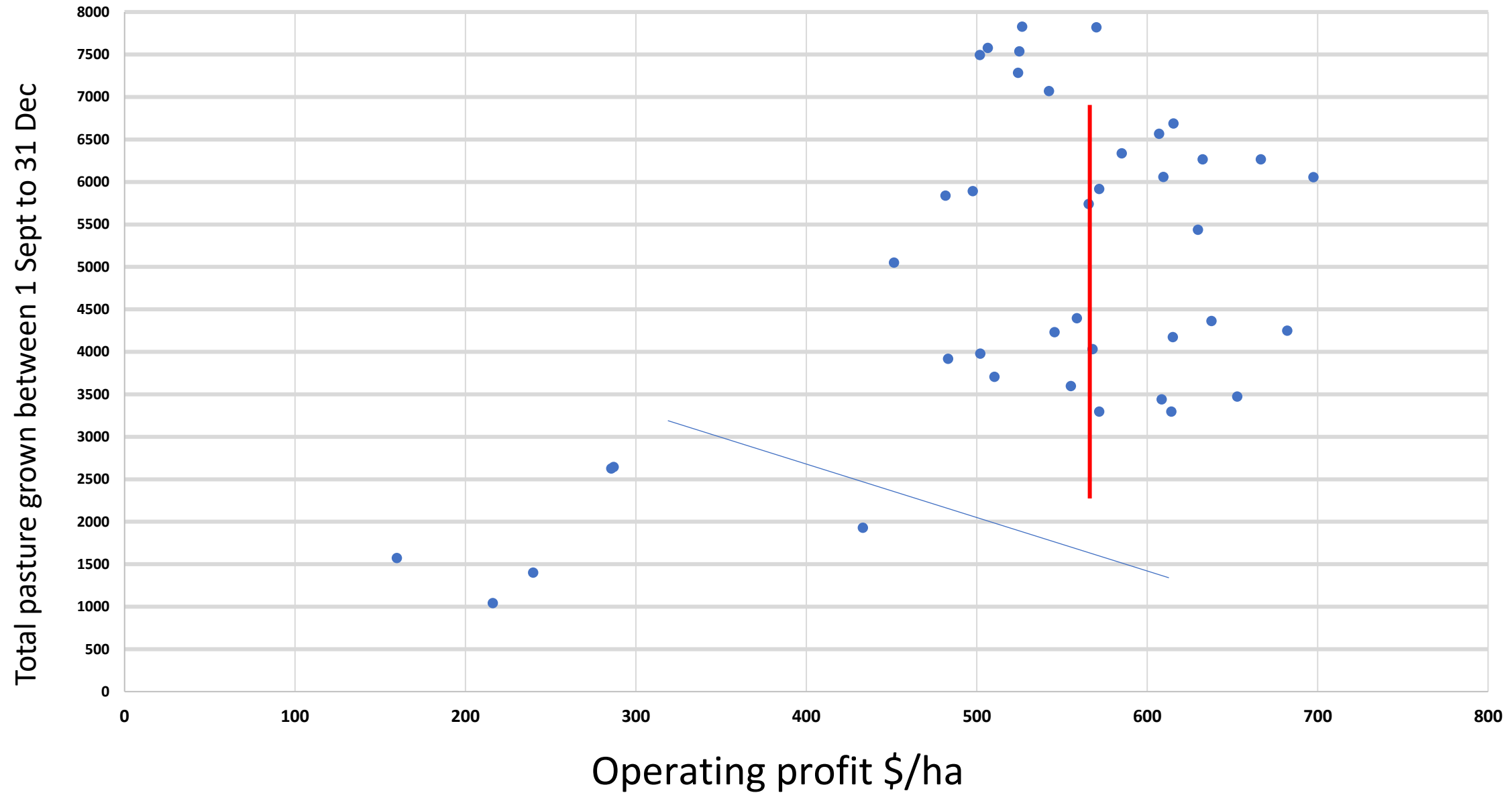


**Seasonal Update - What the forecast means and the implications for producers**

Presenter: Phil Graham



# Do we need a big spring?



# What controls the size of our spring?

1. Soil moisture at the end of winter
2. Herbage mass at the end of winter
3. Rainfall in spring
4. Condition of our stock at the start of spring

*Self-assess on these points as we progress through the presentation.*

*Rating - good ,average, poor*

# BOM and El Nino

- El Nino is a measure of climate conditions in the mid part of the Pacific ocean.
- Any comments about rainfall are based on correlations from previous El Nino events.
- The strength of the correlations varies across Australia, so spring/summer rainfall across Australia will vary.
- Let's look at local data to get an indication of what spring might be like.



**Time aggregation**

Day Month Year

Day 31

Month Jul

Year 2023

Timeline

---

**Precipitation**

Precipitation

**Soil moisture**

Root zone

Upper layer

Lower layer

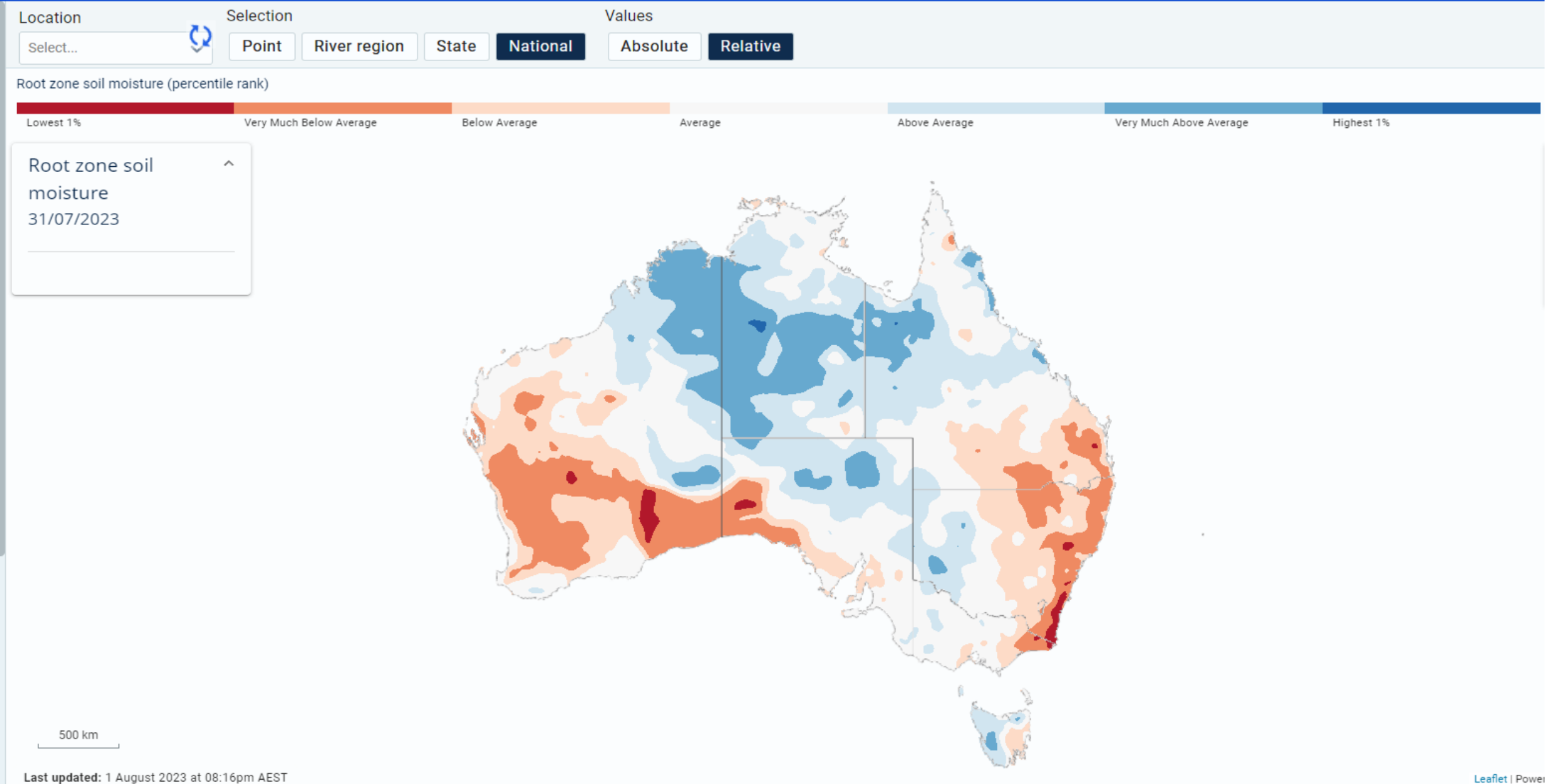
Deep layer

**Runoff**

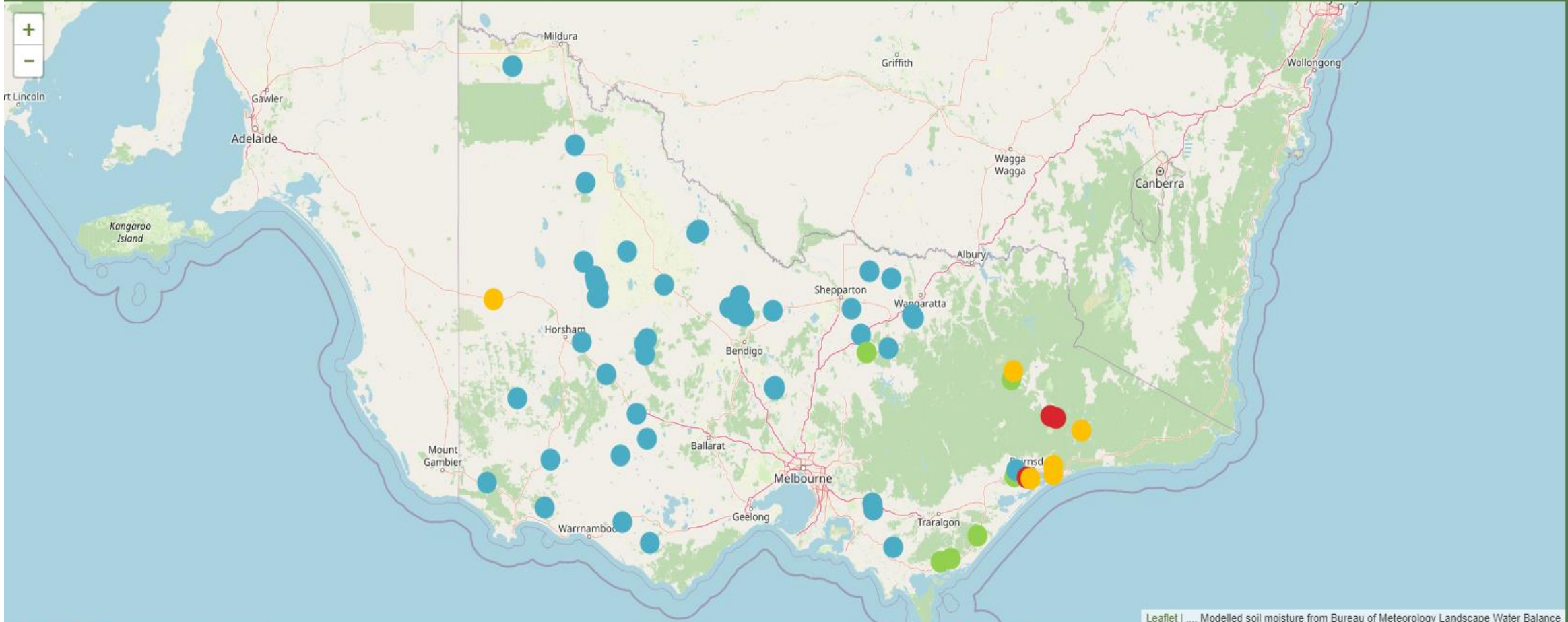
Runoff

**Evapotranspiration**

Areal potential







SHOW SITES

All sites ▾

BASE LAYER

Leaflet | ..., Modelled soil moisture from Bureau of Meteorology Landscape Water Balance

Modelled soil moisture ▾



Call Us



Email



Contact



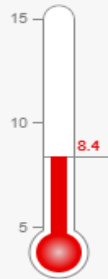
<b>Site funder</b>	Gecko Clan Landcare Network
<b>Soil site descriptor</b>	tbd
<b>Site status</b>	Operating



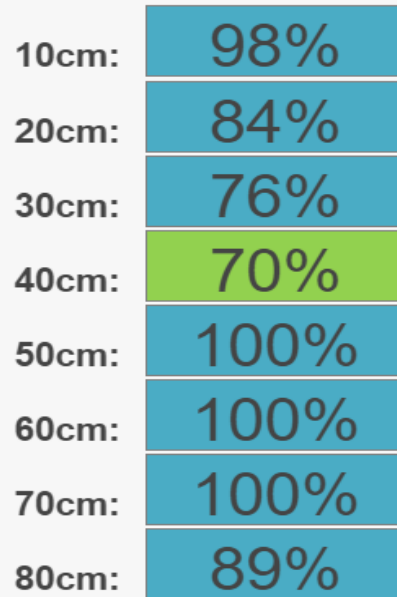
Leaflet | ...

### 9AM SOIL TEMPERATURE

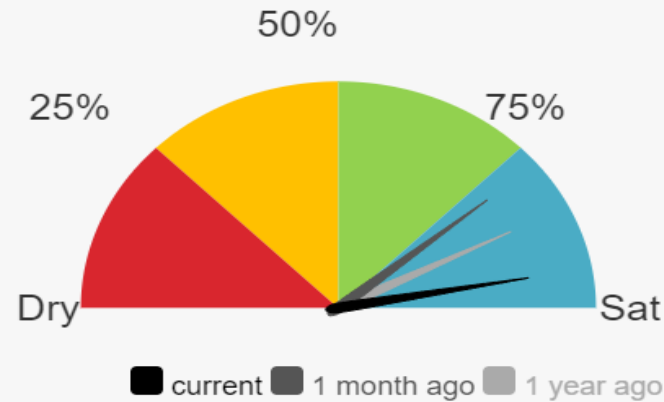
@ 10cm



### CURRENT SOIL MOISTURE



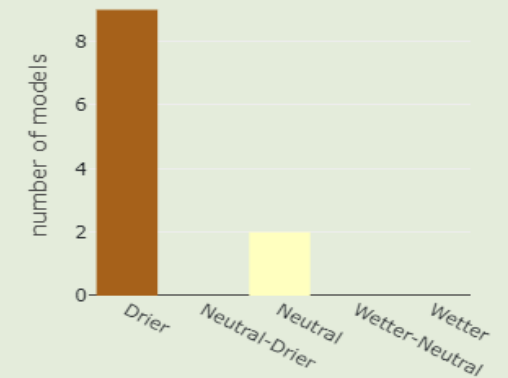
### OVERALL SOIL MOISTURE



### 1-3 MTH RAINFALL OUTLOOK

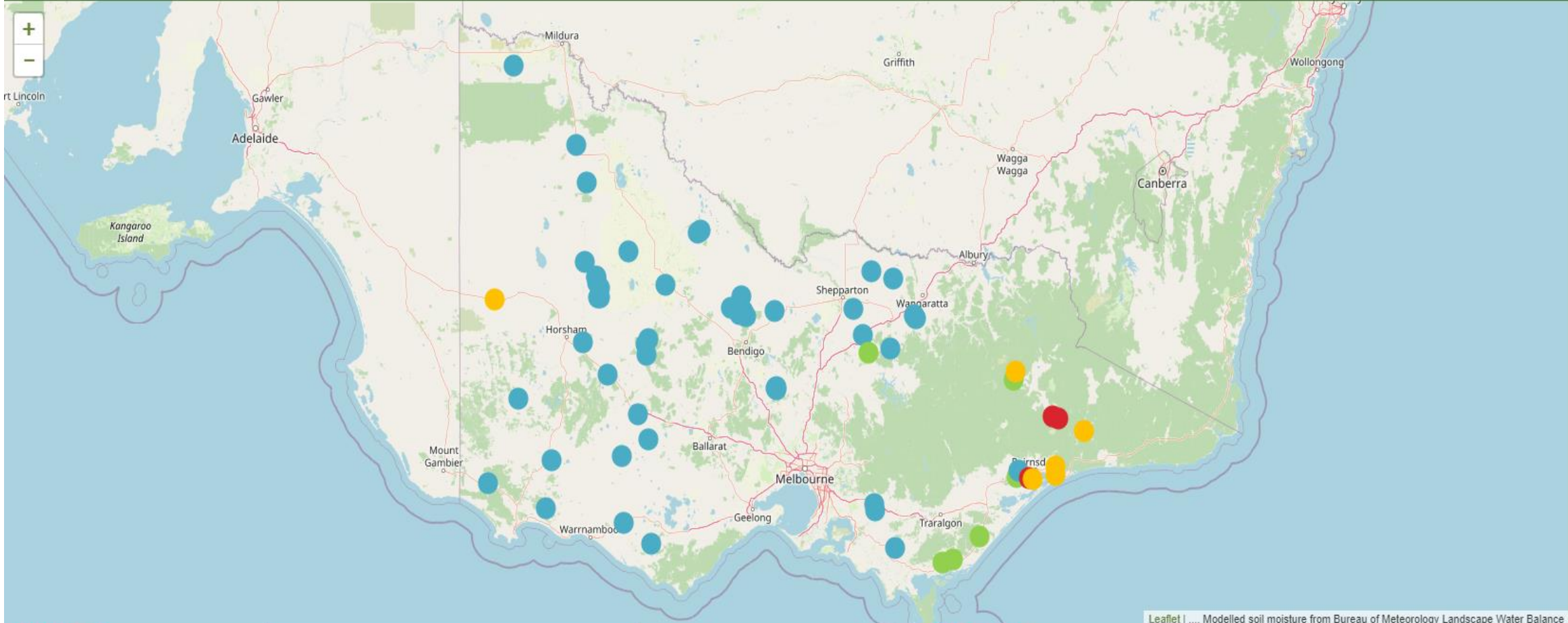
Whole of Victoria

Updated 26 July



Source: 'Fast Break' Ag Vic

Summary outlook, your individual district could be different. Details here.



SHOW SITES

All sites ▾

BASE LAYER

Leaflet | ..., Modelled soil moisture from Bureau of Meteorology Landscape Water Balance

Modelled soil moisture ▾



Call Us



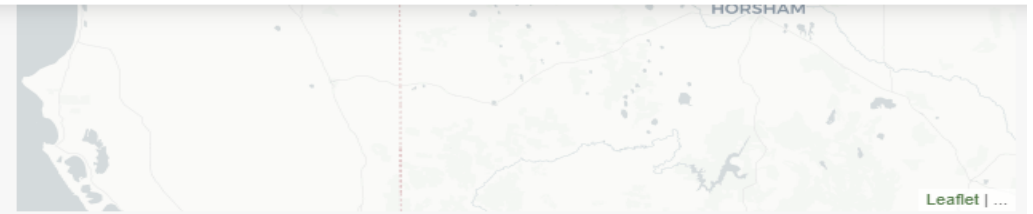
Email



Contact

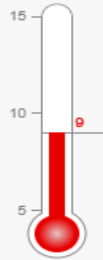


Crop/pasture type 2022	Lucerne
Crop/pasture type 2023	Lucerne
Site funder	Agriculture Victoria
Soil site descriptor	Non wetting sand - Clay lined in 2018
Site status	Operating

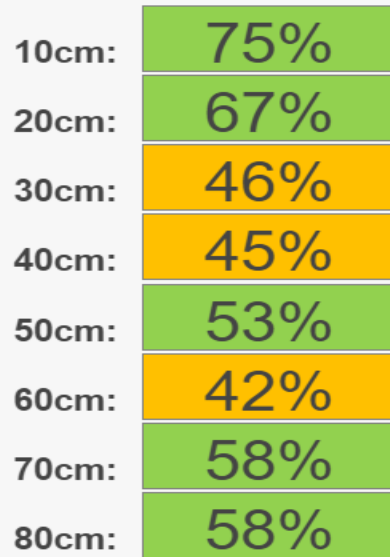


### 9AM SOIL TEMPERATURE

@ 10cm

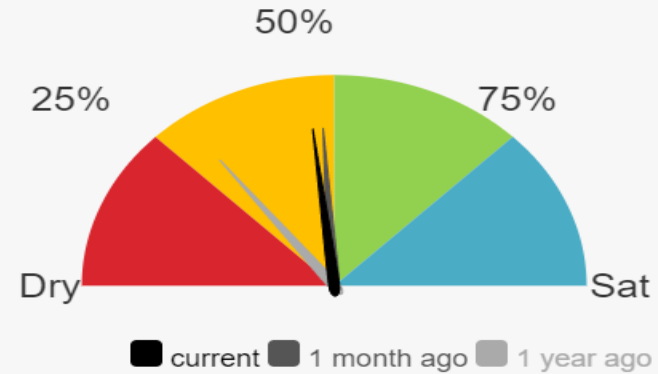


### CURRENT SOIL MOISTURE



### OVERALL SOIL MOISTURE

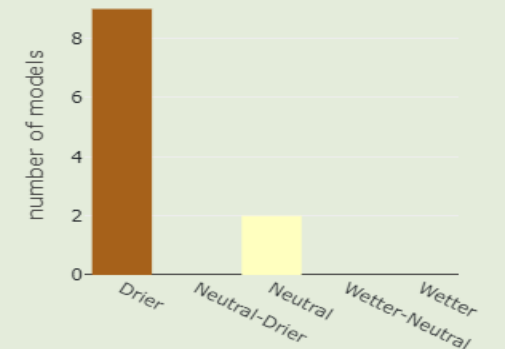
10cm-80cm



### 1-3 MTH RAINFALL OUTLOOK

Whole of Victoria

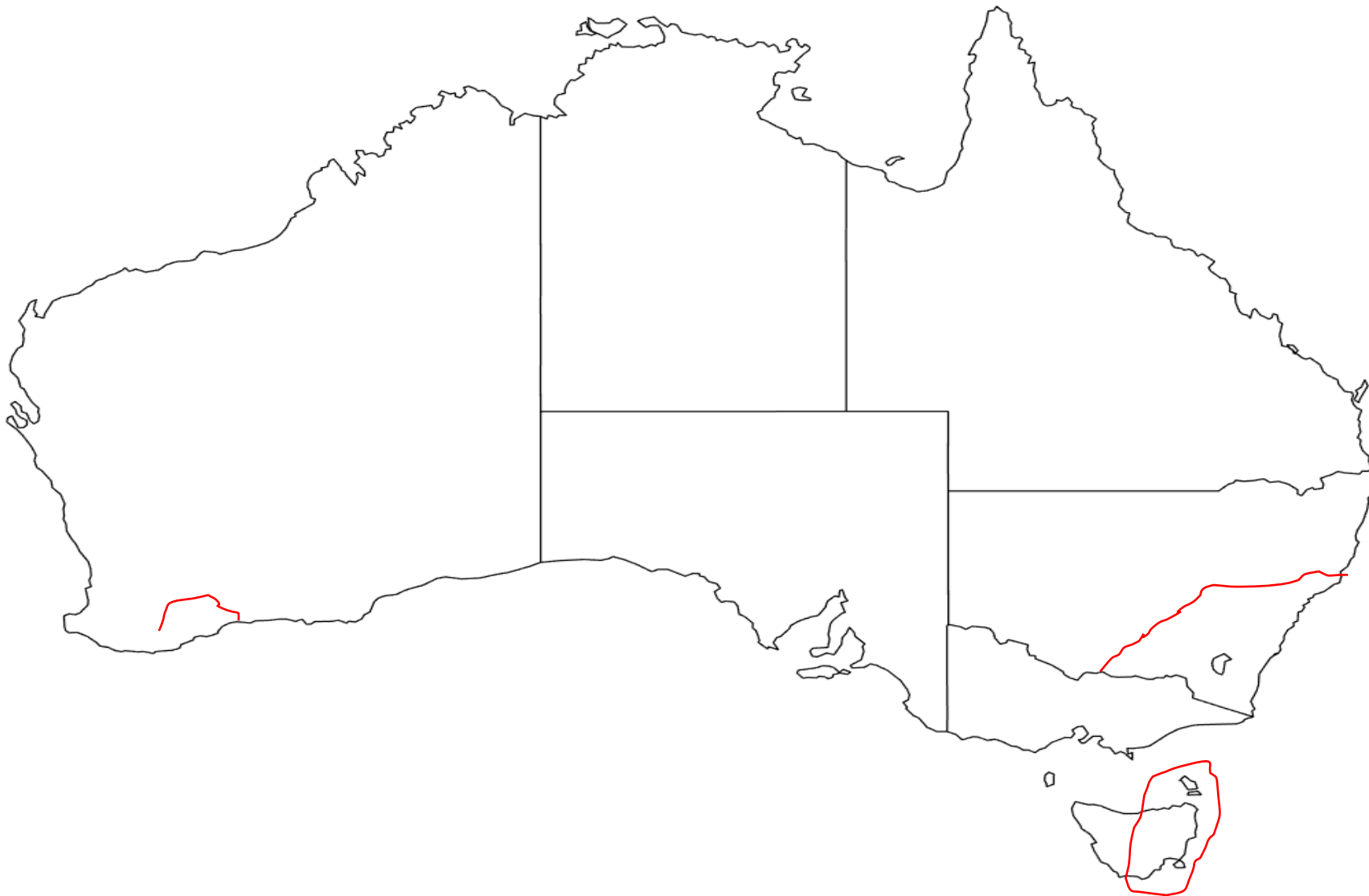
Updated 26 July



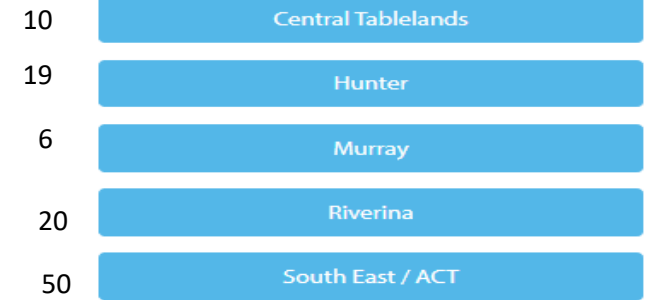
Source: 'Fast Break' Ag Vic

Summary outlook, your individual district could be different. [Details here.](#)

# Farming Forecaster



## New South Wales / ACT



## Tasmania



## Western Australia





# Farming Forecaster

[Learn to use Farming Forecaster ▶](#)

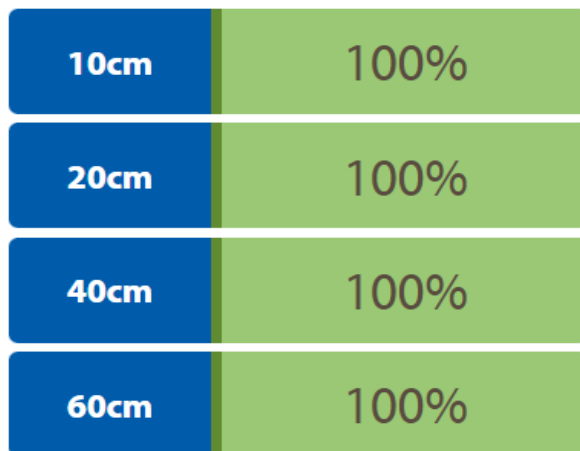


## Probe and Weather Station

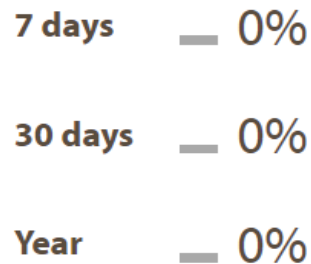
Last update: Friday 1:00 AM (probe)

Friday 7:30 AM (weather)

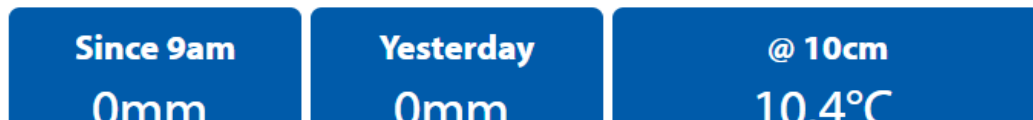
### Soil Moisture



### Change



### Rainfall



### Soil Temperature



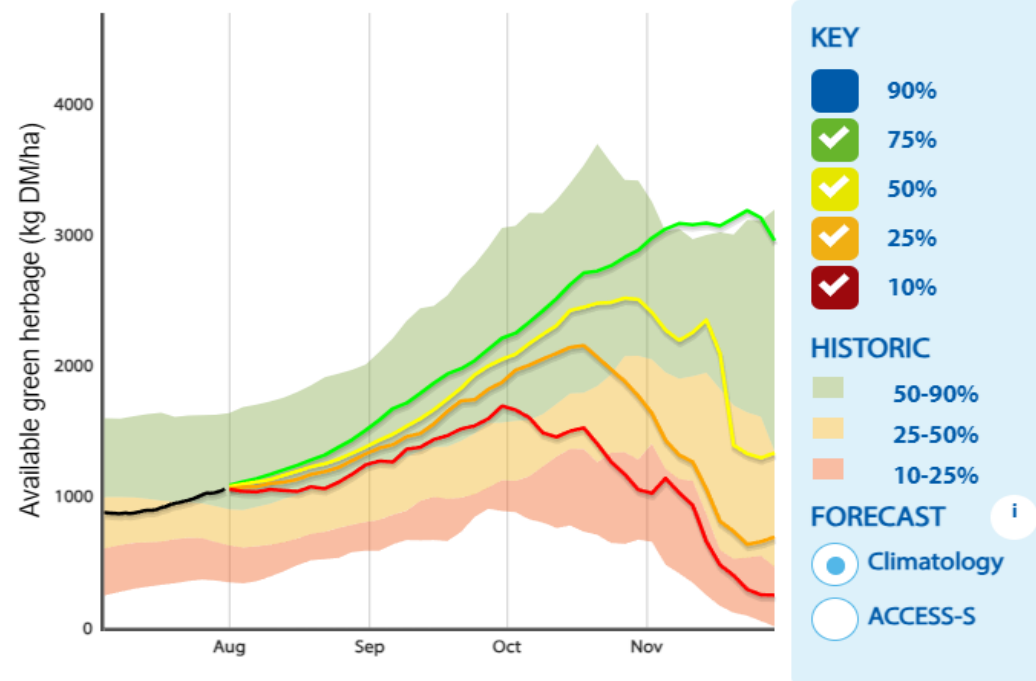
## Pasture Forecast

Last Update: 11 days ago

Bookham ▼

Provided by CSIRO

### Projected green herbage available relative to historic variation



11.3°C

84%

2kph   
NNE

Δ2°C

More Pasture Detail

View Regional Map

More Probe Details



## Weather Forecast

Last Update: 45 minutes ago

Forecast data provided by CSIRO

Some data on this app. is sourced from the Bureau of Meteorology.

	Chance of Rain	Rainfall	Temperature	Warnings
<b>Today</b>	15%	0.2mm	8-18°C	
<b>Sat</b>	76%	3mm	4-14°C	
<b>Sun</b>	16%	0.3mm	4-15°C	
<b>Mon</b>	14%	0.1mm	3-15°C	
<b>Tue</b>	5%	0mm	2-16°C	
<b>Wed</b>	17%	0.2mm	5-16°C	
<b>Thu</b>	43%	0.8mm	5-17°C	



## Extra Info

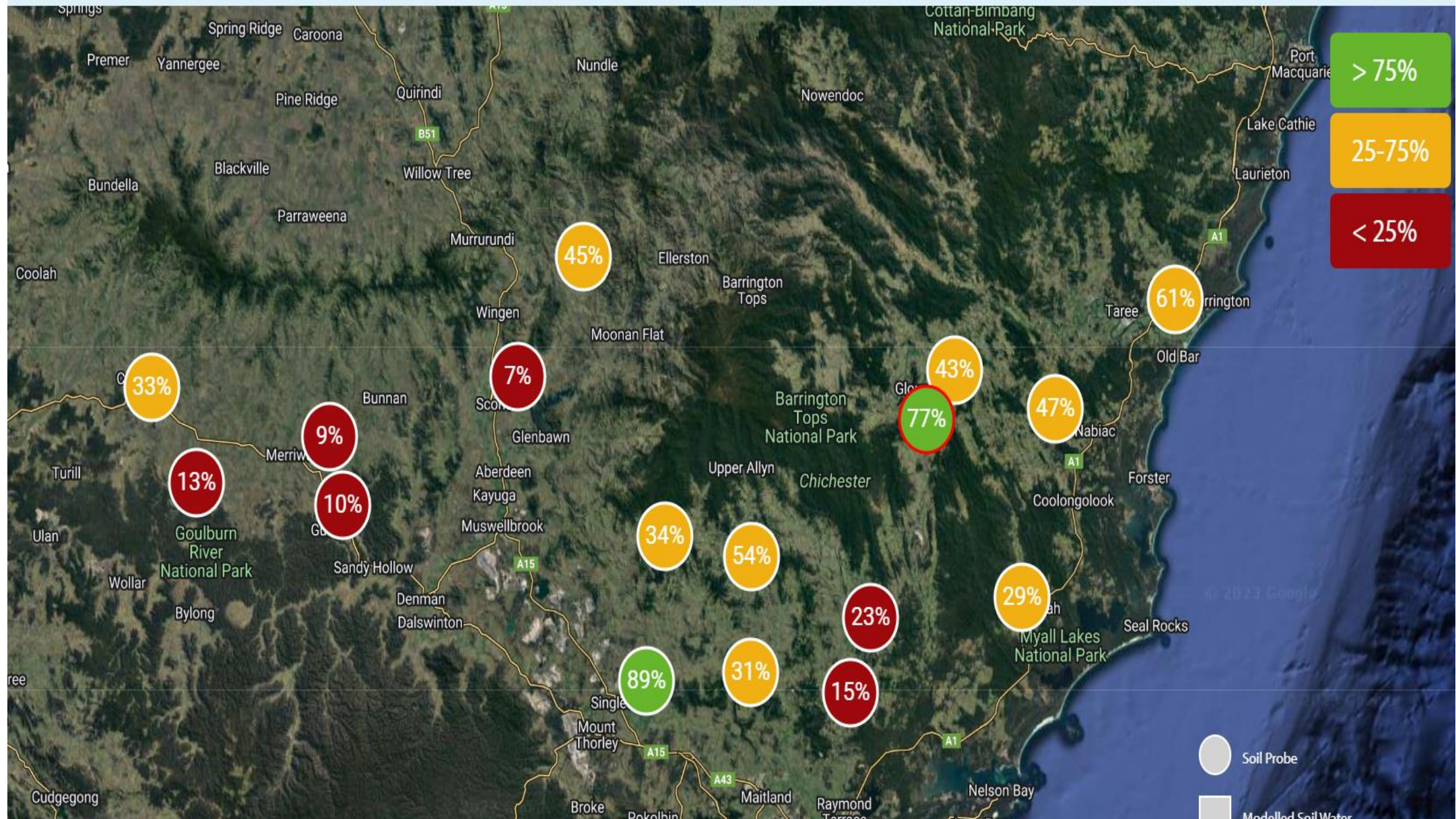
Last update: 2/02/2023 1:55 PM



# Farming Forecaster

## The Farming Forecaster grazing management tool

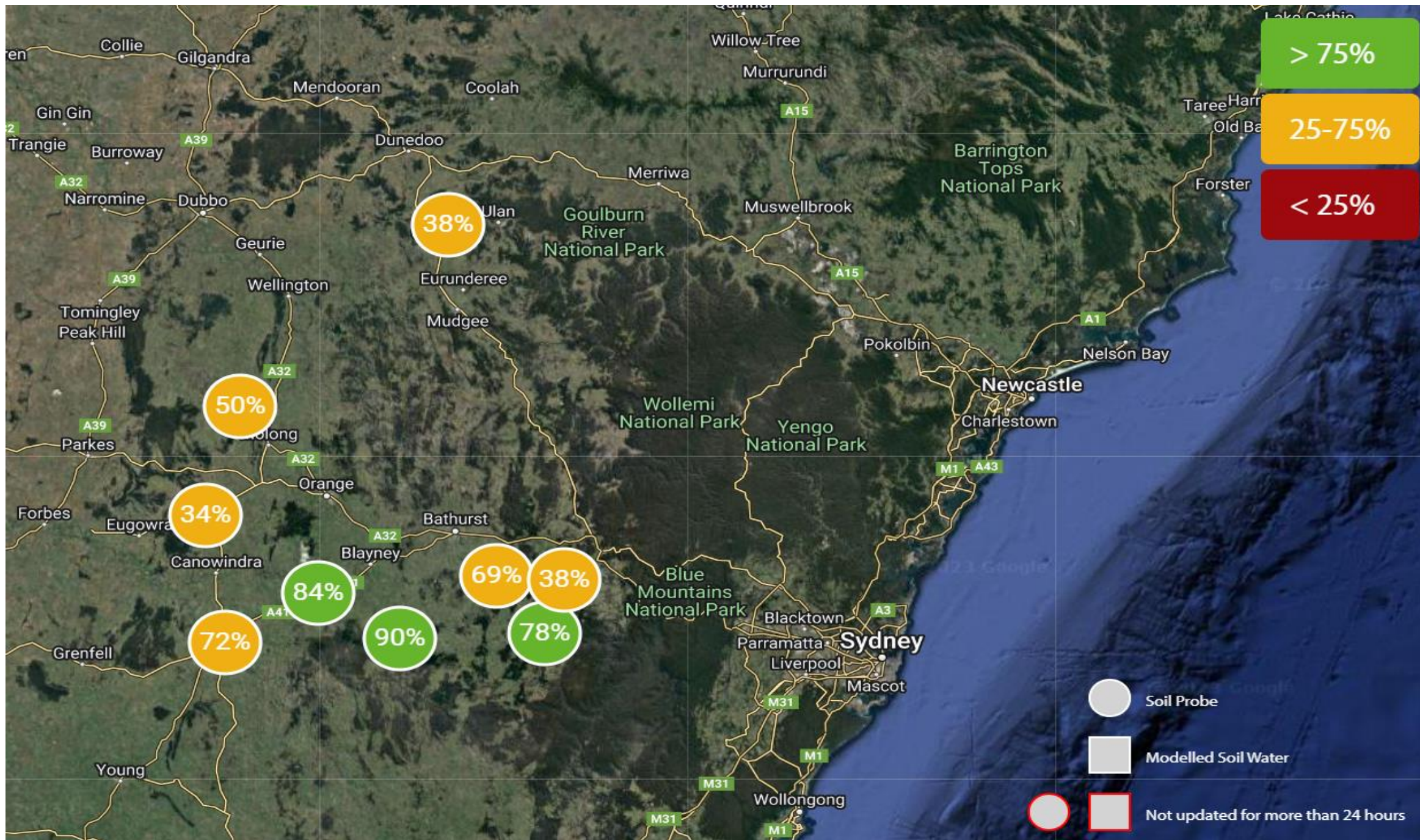
Developed with graziers, Farming Forecaster places soil moisture, local weather, pasture production and livestock performance information graziers fingertips. This video provides a brief overview of what Farming

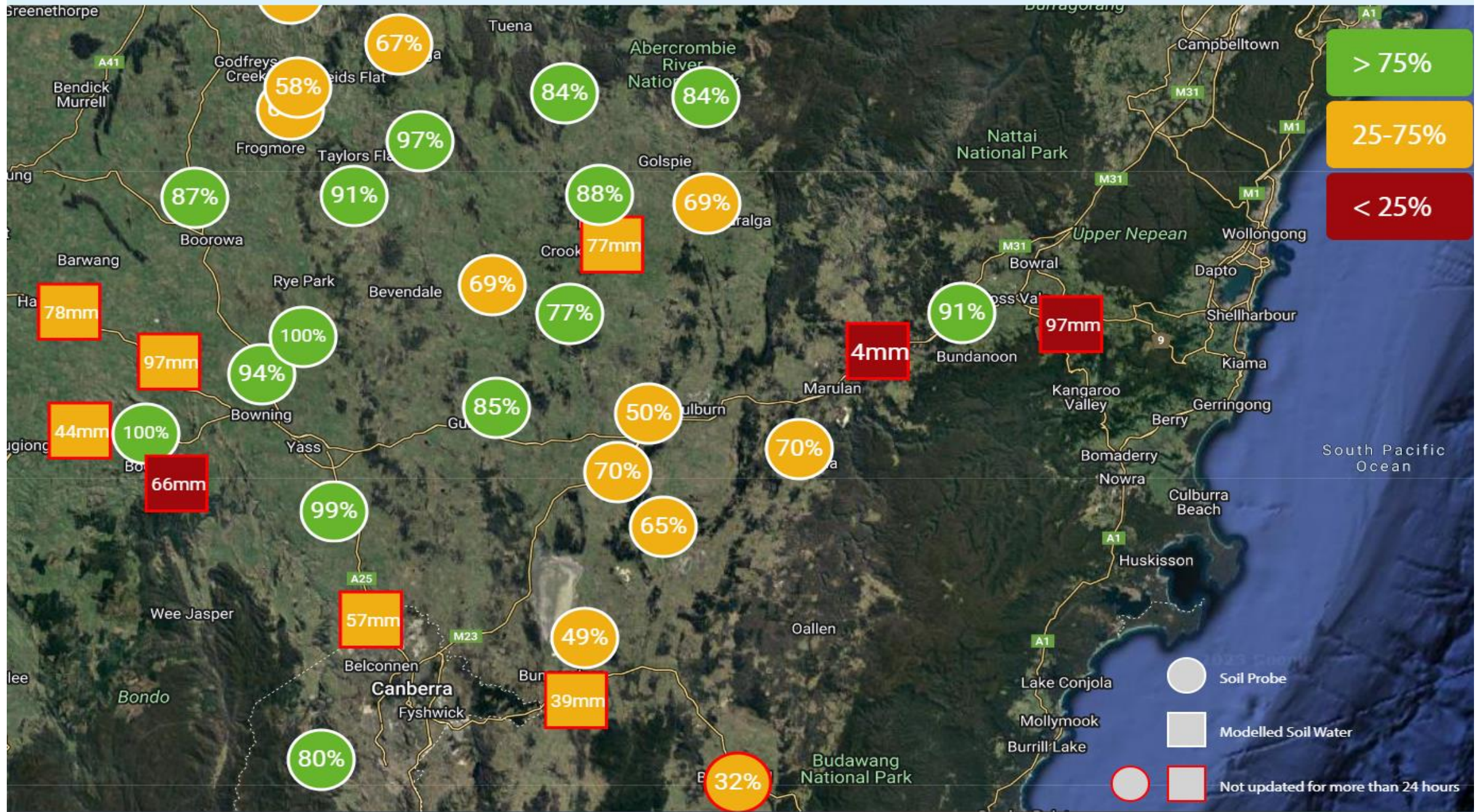


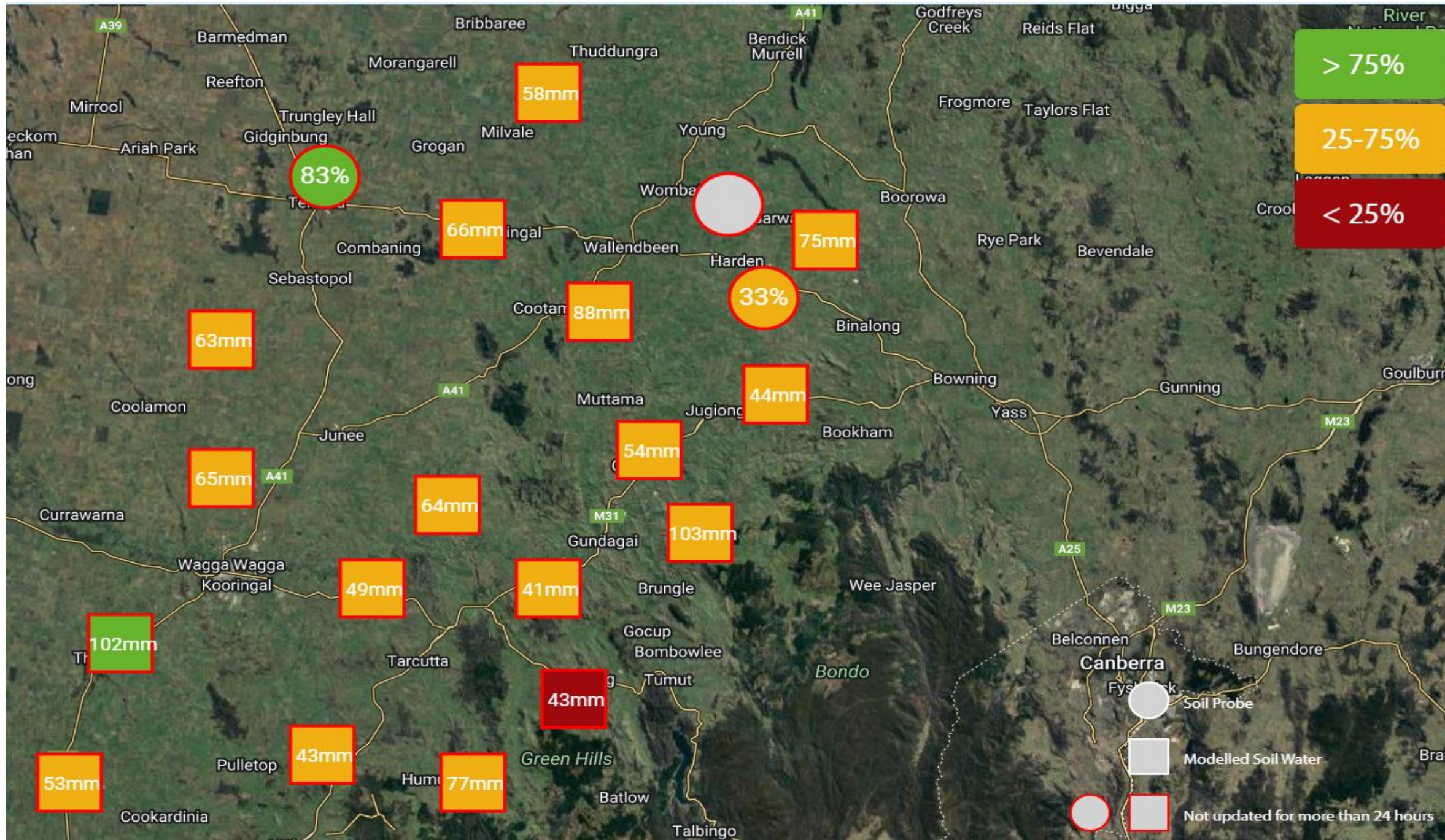
○ Soil Probe

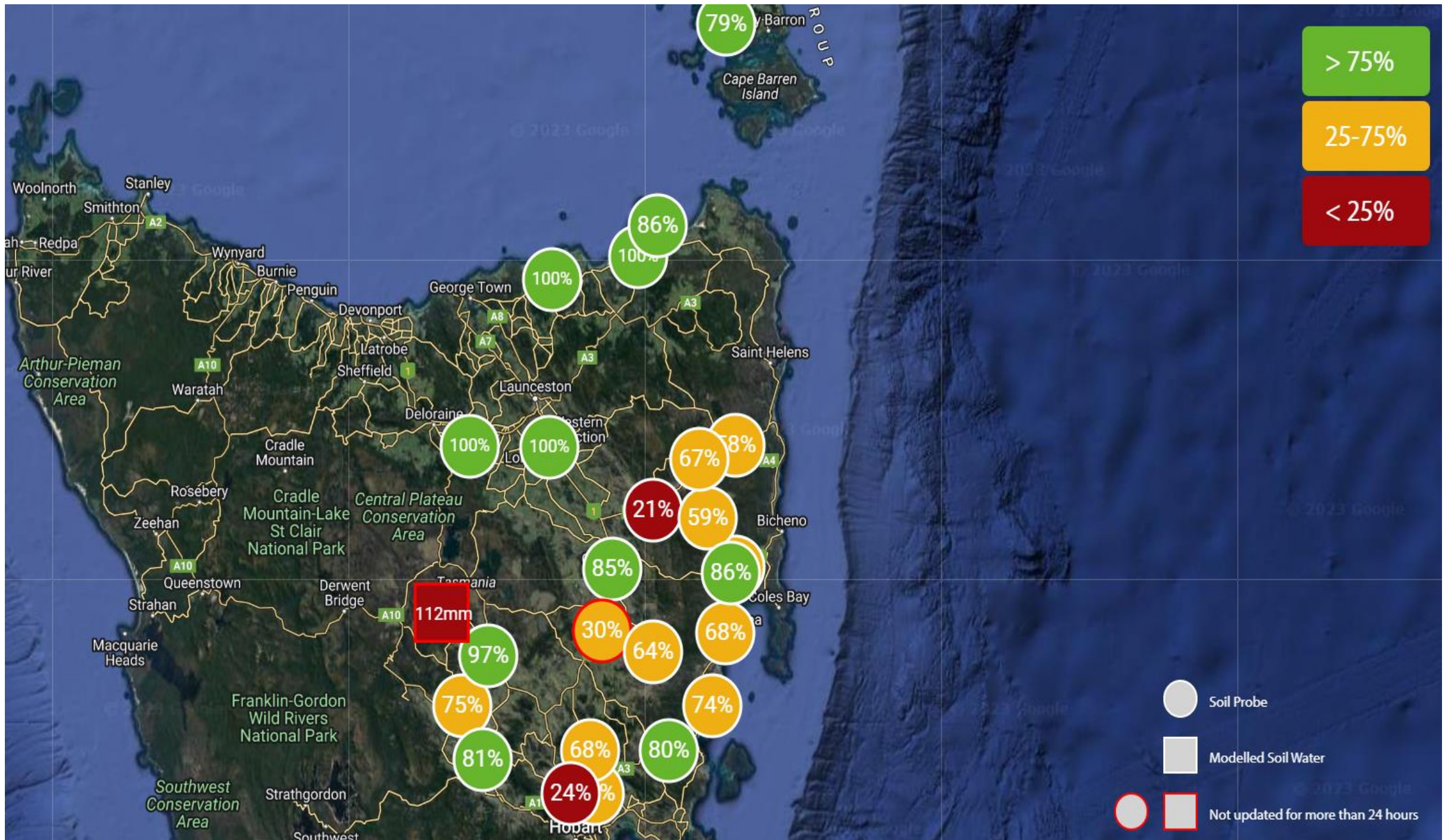
■ Modelled Soil Water













# Farming Forecaster

[Learn to use Farming Forecaster ▶](#)



## Probe

Last update: Never

[View Regional Map](#)

No soil moisture data available for the selected location.



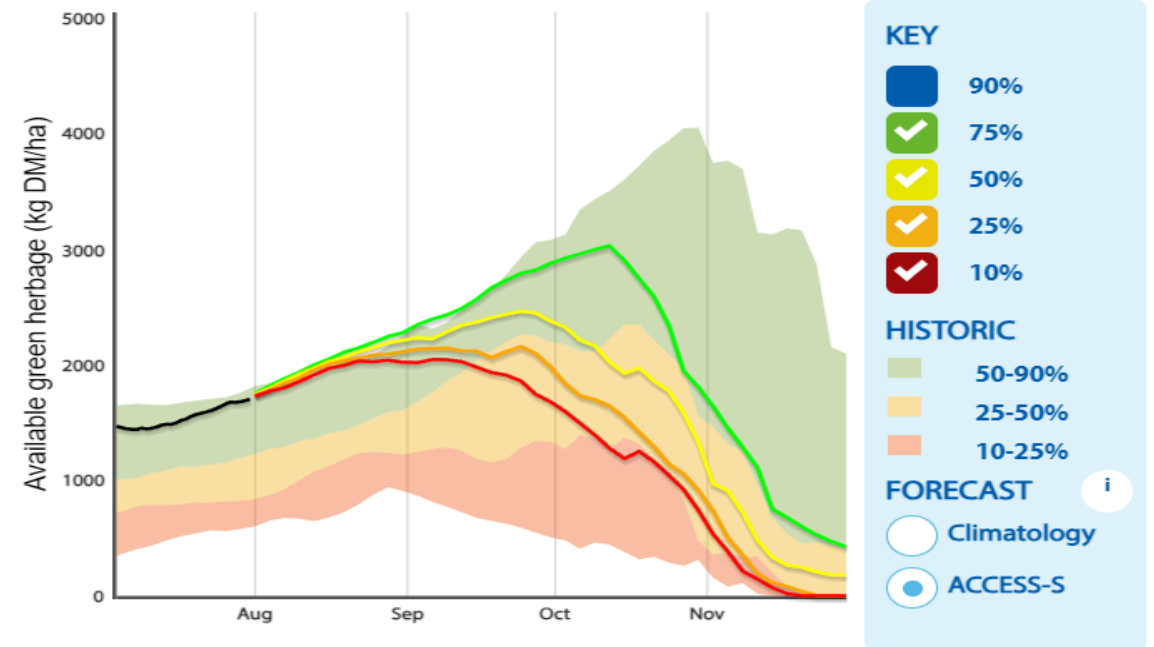
## Pasture Forecast

Last Update: 9 days ago

Stockinbingal ▼

Provided by CSIRO

### Projected green herbage available relative to historic variation

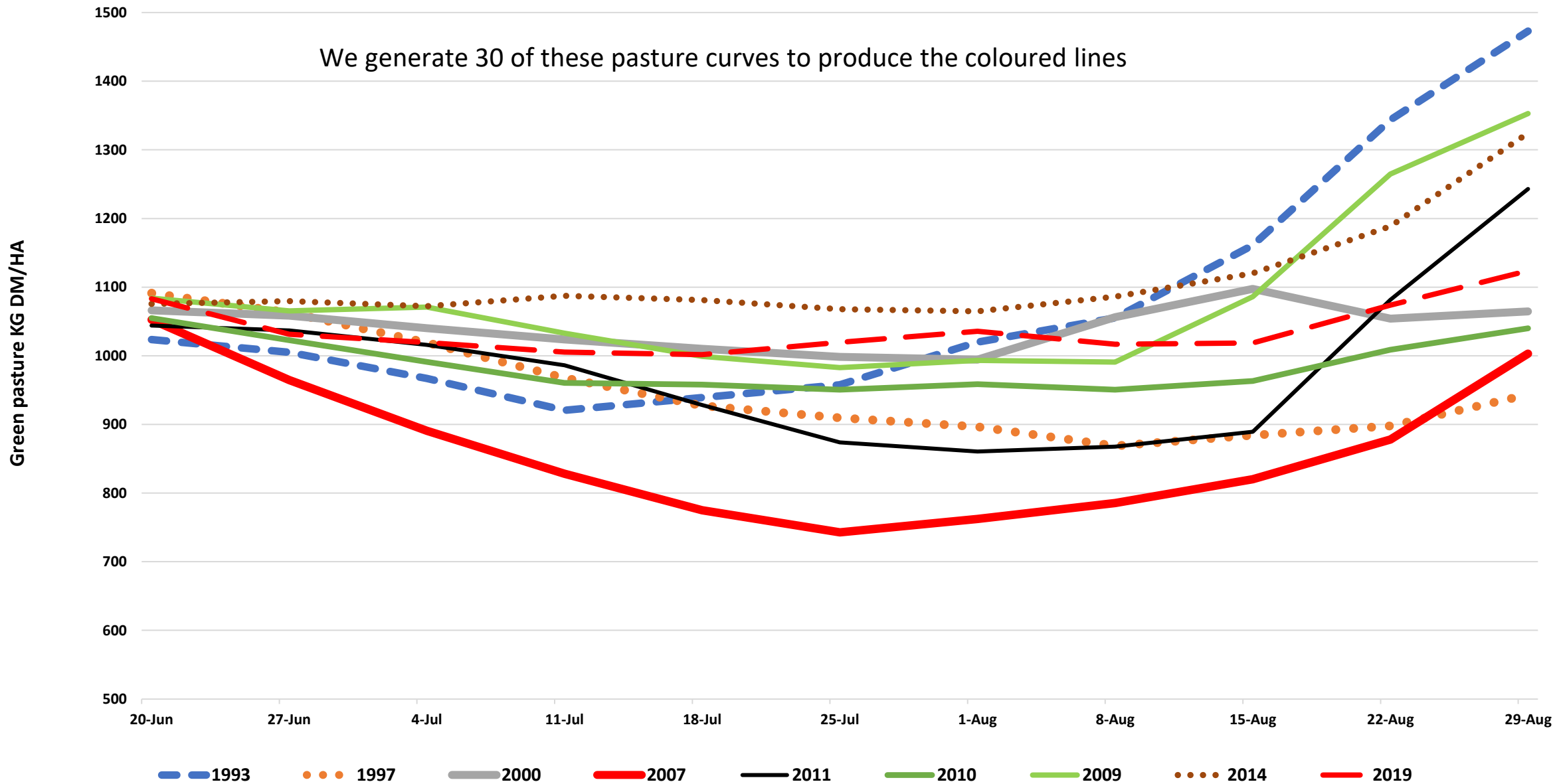


**Current Growth (modelled)**

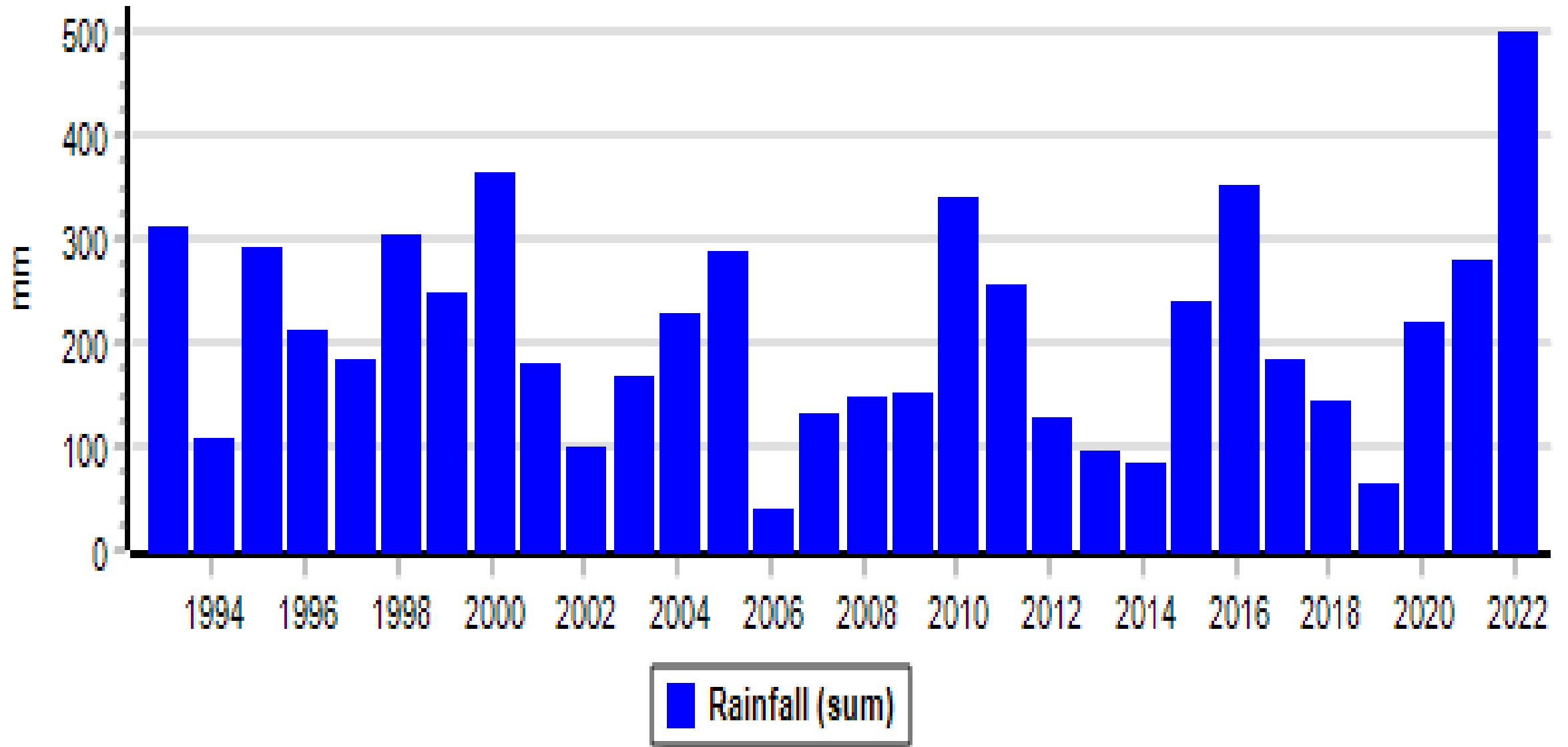
**28** kg/ha/day



We generate 30 of these pasture curves to produce the coloured lines

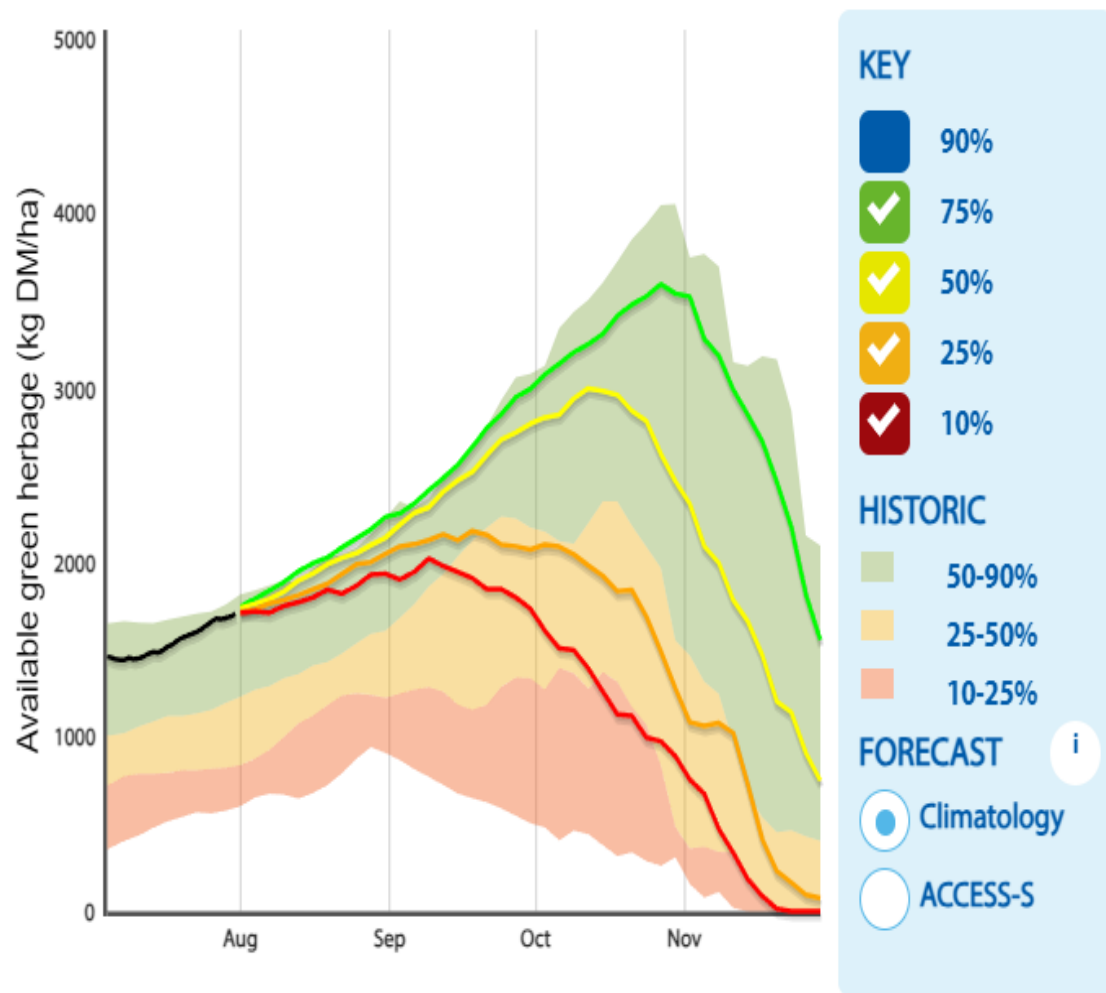


Rainfall for the period 1 August to 30 November

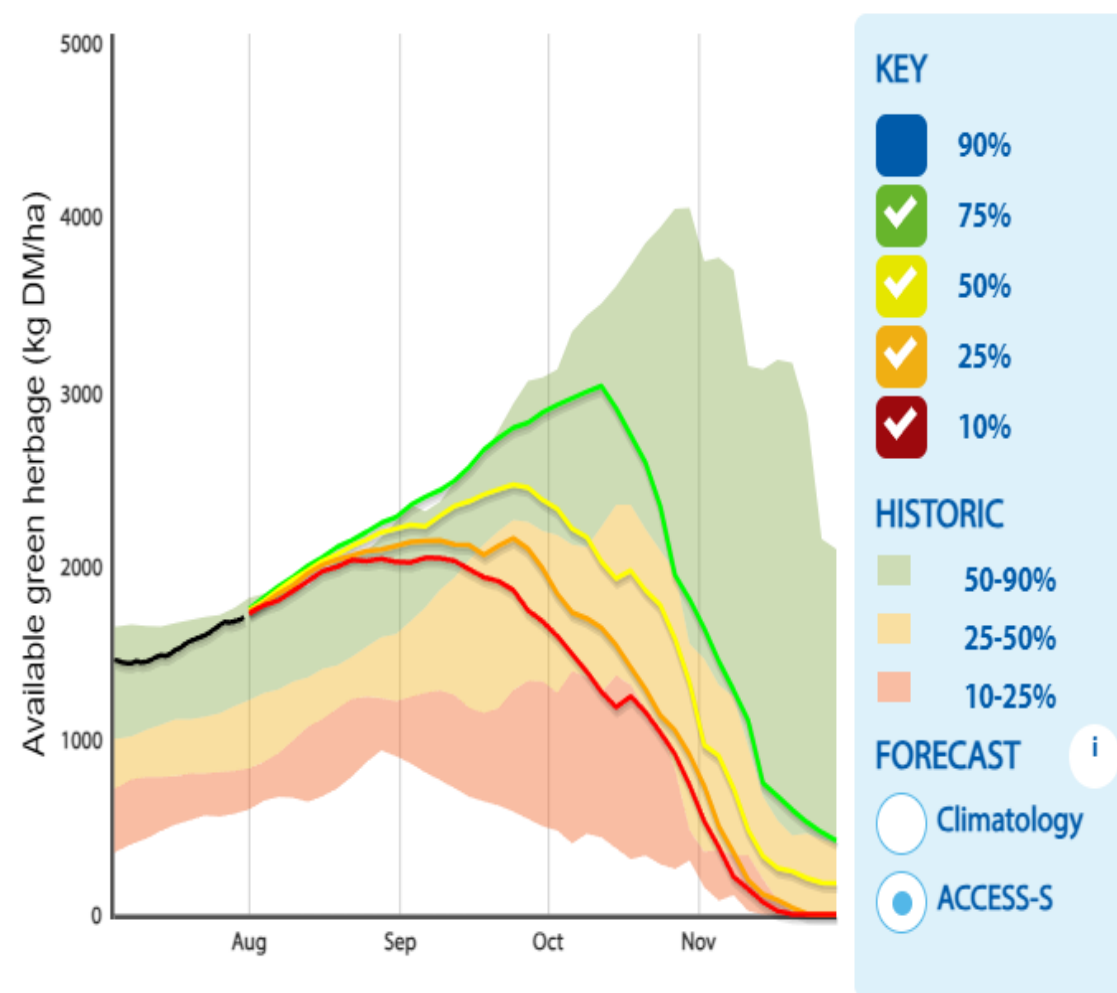




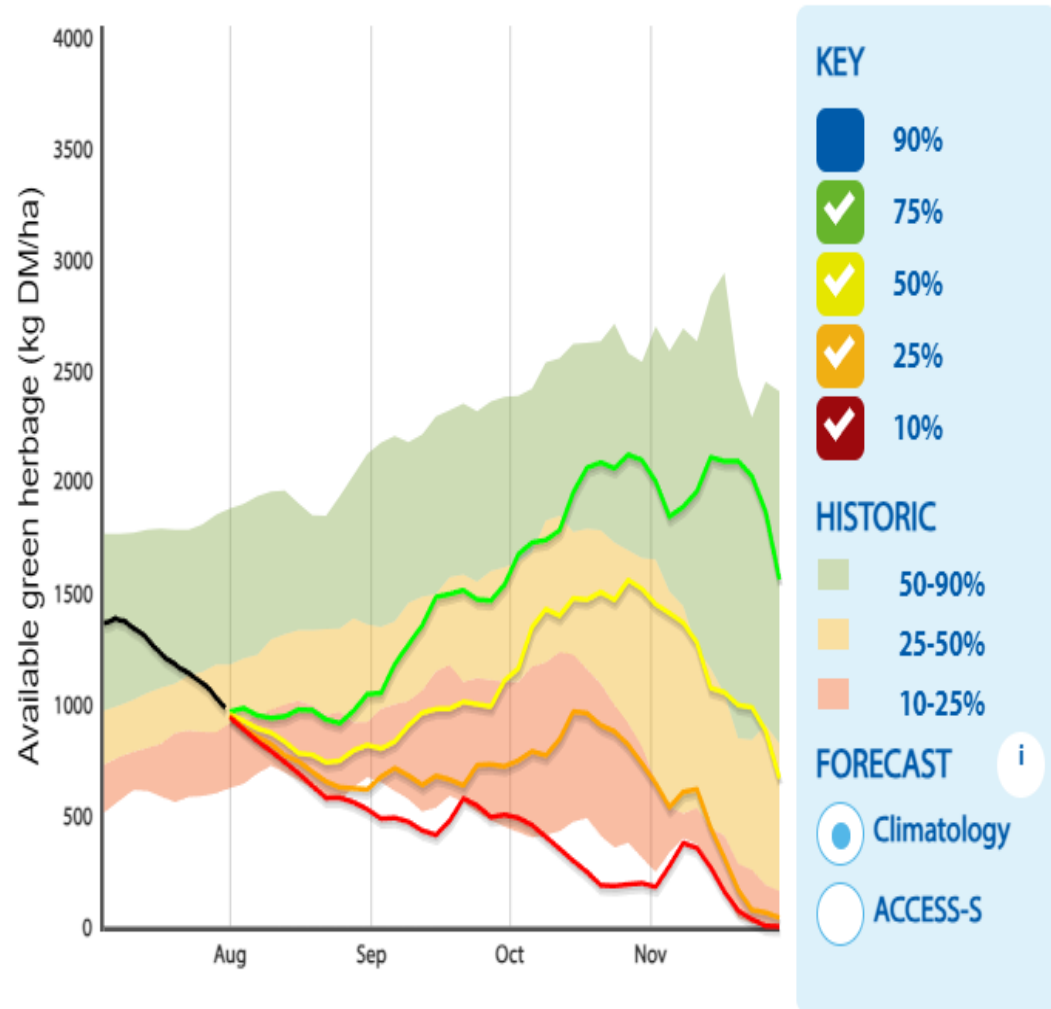
## Projected green herbage available relative to historic variation

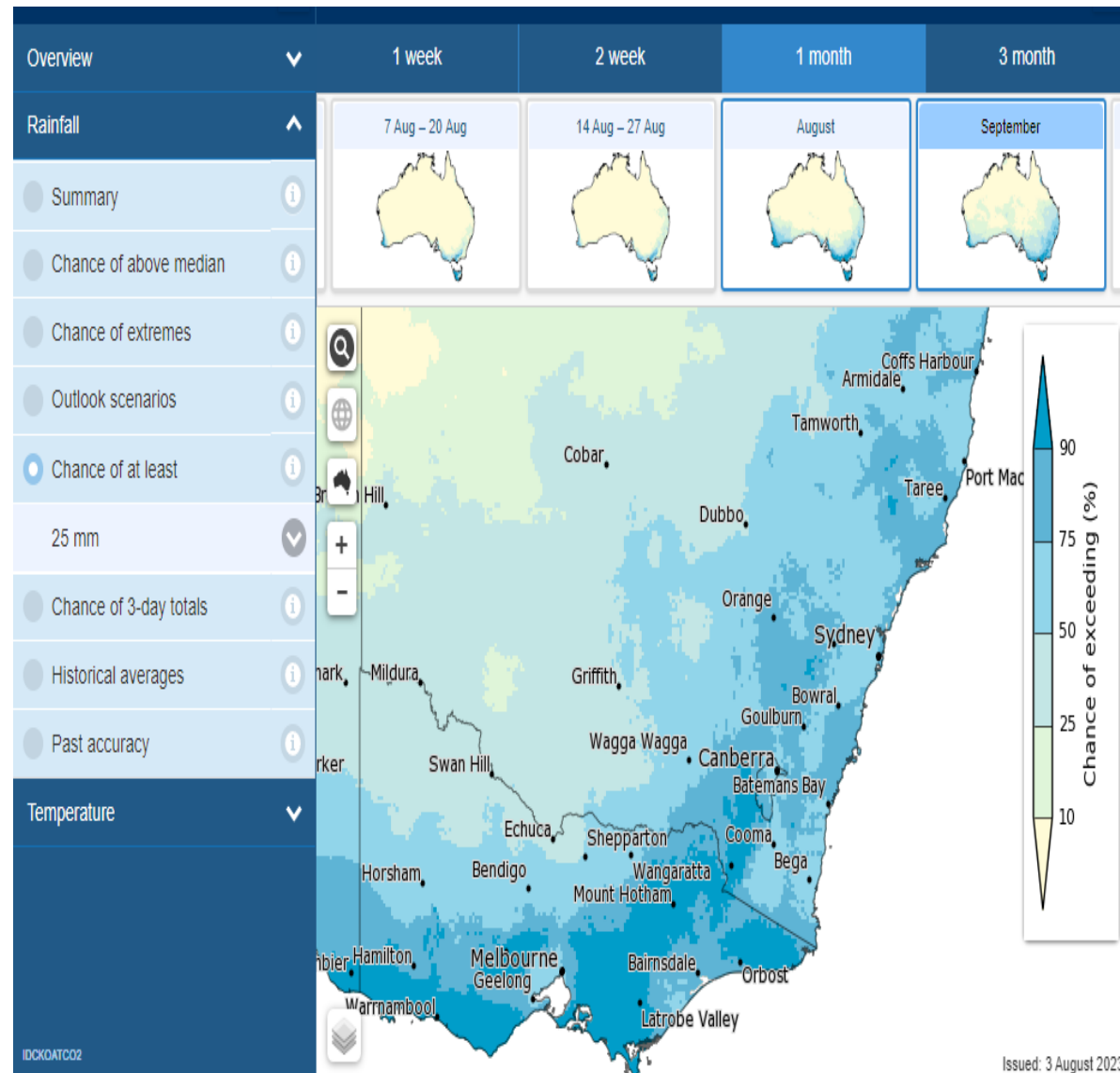
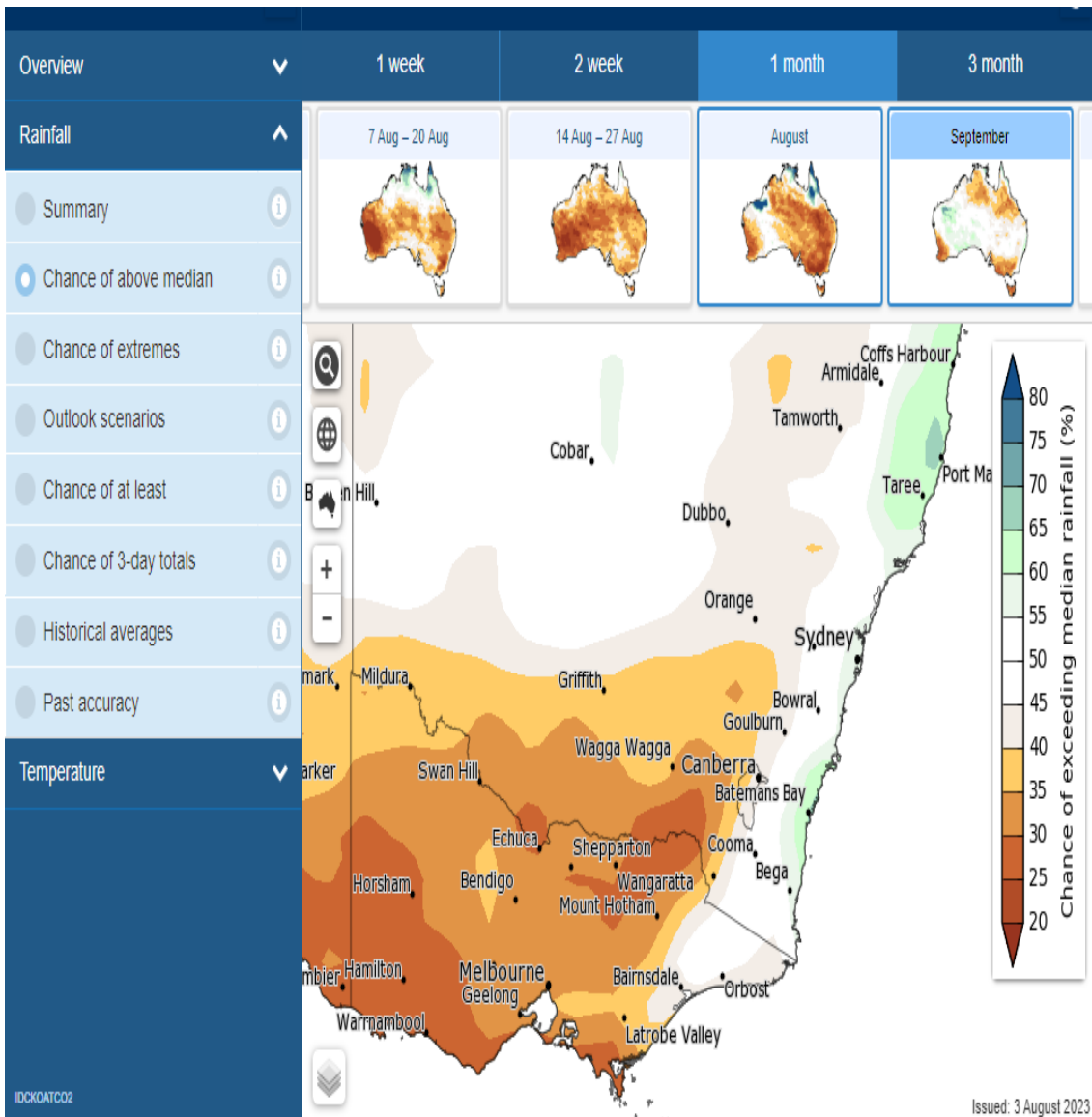


## Projected green herbage available relative to historic variation



## Projected green herbage available relative to historic variation





# Summary slide

- What is your assessment for achieving a “spring”
  - Poor – you need to be deciding on/implementing your strategy for managing your livestock enterprises through this event. **Stockplan** (developed by NSW DPI) and used extensively in the 2000’s is still the best program in helping you develop your strategy. Being supported by LLS.
  - Good – no major changes are needed to the enterprises. React to the changing pasture conditions. You might well be feeding stock in late summer/autumn, but this is not that unusual.
  - 50/50 – keep assessing the situation weekly until you decide your position.

Every dry event is different because the variables that you need to consider keep changing e.g. a big difference in stock prices between 2019 and 2023 will change plans.



# Questions?

- Slido icon at the top of your screen OR
- Head to Slido.com and enter the code #ppaugust

- We would love your feedback:



# Thank you for attending, we welcome your feedback

