

## Livestock Advisor Updates: 'Unpacking livestock production'

**Online, Tuesday 16 November 2021**

<b>Venue</b>	Zoom
<b>Time</b>	9:00am – 3:45pm
<b>Cost</b>	\$50

### Morning sessions

#### Maximising the golden time in livestock

- John Francis, Agrista

#### What advisors need to know about MSA

- Laura Garland, Meat & Livestock Australia

#### Unpacking carbon farming – busting some myths, what's real and what's not

- Margaret Jewell, Meat & Livestock Australia, Graeme Anderson, Agriculture Victoria, Richard Eckard, University of Melbourne and Mark Wooton, Jigsaw Farms

### Afternoon sessions

#### Best practice pain relief

- Bruce Allworth, Charles Sturt University

#### Containment feeding – the advisor / producer partnership

- Andrew Whale, Livestock Logic and Tim Currie, Lyndoch Park VIC

#### Advantages of crossbreeding in cattle

- Hamish Chandler, Meat & Livestock Australia

#### Unlocking the key to ewe survival during lambing

- Mary McQuillan, Apiam Animal health

## Register today

Registrations open soon. For more information: <https://www.mla.com.au/advisor-updates> or contact [livestockadvisorupdates@pinionadvisory.com](mailto:livestockadvisorupdates@pinionadvisory.com)

## Profitable Grazing Systems 'Trainers' Skills Intensive' with Laurie Kelly Online, Wednesday 3 & Thursday 4 November 2021

Venue	Zoom
Time	1.30pm – 5.00pm (Wed) and 12.30pm – 4.00pm (Thurs)
Cost	\$50

### Are you a trainer? Are you an educator? Would you like...

Some tips on engaging and inspiring your learners?  
To learn more about practical learning transfer techniques?  
Have more of an impact on your learners?

Gain practical training ideas that are based on the latest in brain research to better engage your participants – no matter what your content, your experience, or their enthusiasm. Trainers will experience Brain Friendly Learning in practice. They will understand some basic brain physiology, but more importantly, what this means in the teaching environment and how relevant it is for successful learning outcomes.



Laurie Kelly speaks both nationally and internationally on current knowledge of how the mind works to maximize the Impact of Training, and to create an Openness Factor in our approach to Change and new Learning.

### Register today

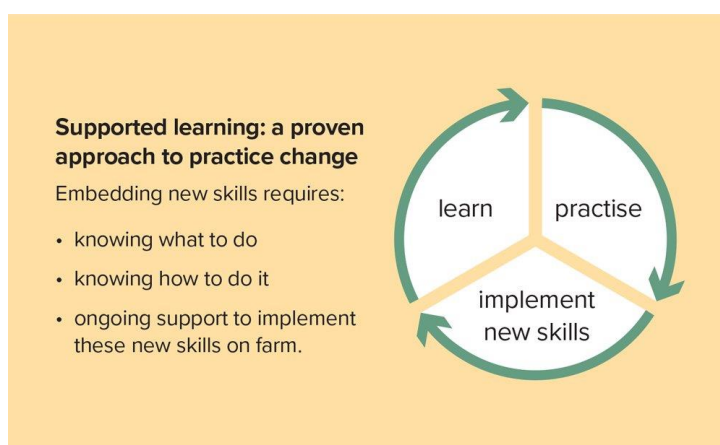
Registrations open soon. For more information contact [klubcke@mla.com.au](mailto:klubcke@mla.com.au)

## Profitable Grazing Systems Business Essentials - Train the trainer

Online, Thursday 11 November 2021

Venue	Zoom
Time	10 am – 12 noon & 1 – 3 pm
Cost	Free

**Profitable Grazing Systems (PGS) takes small groups of like-minded producers who want to improve their whole-farm performance and matches them with a deliverer who builds their knowledge, skills, and experience through hands-on training.**



### Business Essentials

Developed by Pinion Advisory, participants will be upskilled in the fundamentals for managing the business side of a livestock enterprise. This workshop will be delivered by Jim Cuming from Pinion Advisory.

### Building better breeders

This package covers the A-Z of beef breeding in southern and temperate production zones while supporting producers to introduce and utilize eID in their operation.

## Register today

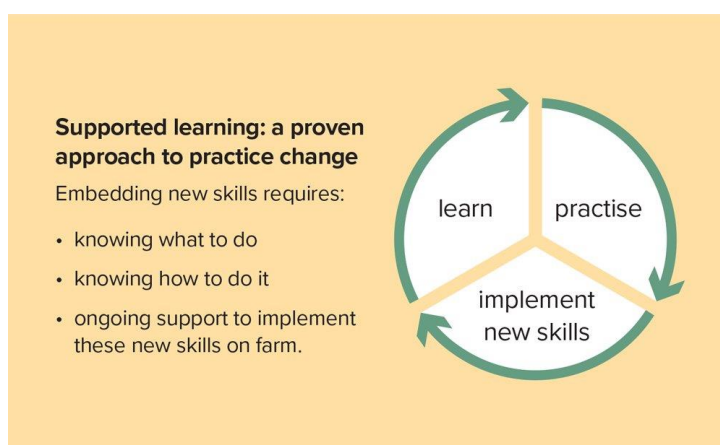
Registrations open soon. For more information: <https://www.mla.com.au/extension-training-and-tools/profitable-grazing-systems/> or contact [klubcke@mla.com.au](mailto:klubcke@mla.com.au)

## Profitable Grazing Systems Building better breeders - train the trainer

Online, Thursday 9th November 2021

Venue	Zoom
Time	10 am – 12 noon & 1 – 3pm
Cost	Free

**Profitable Grazing Systems (PGS) takes small groups of like-minded producers who want to improve their whole-farm performance and matches them with a deliverer who builds their knowledge, skills, and experience through hands-on training.**



### Building better breeders

This package covers the A-Z of beef breeding in southern and temperate production zones while supporting producers to introduce and utilize eID in their operation. This workshop will be delivered by Alistair Rayner, from RaynerAg.

### Register today

Registrations open soon. For more information: <https://www.mla.com.au/extension-training-and-tools/profitable-grazing-systems/> or contact [klubcke@mla.com.au](mailto:klubcke@mla.com.au)