

meatup FORUM

For the latest in red meat R&D

The Rangelands Living Skins Project & “Bokhara Plains”

Graham Finlayson
Bokhara Diversified Pty Ltd

Rangeland Living Skin Project

Gus & Kelly Whyte
Wyndham Station
(Wentworth, NSW)

Andrew & Megan Mosely
Etiwanda
(Cobar, NSW)

Tony & Meredith Thompson
The Angle
(Bourke, NSW)

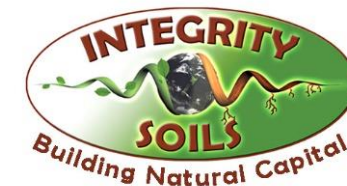
Graham & Cathy Finlayson
Bokhara Plains
(Brewarrina, NSW)



Department of
Primary Industries



Australian
National
University



AIM: Measure and understand productivity, business and environmental impacts of a variety of interventions and practices designed to achieve producer- and context-specific outcomes.

- **Researching** management practices that are outcome-focused on optimising livestock carrying capacity, pasture composition, ground cover and soil carbon.
- **Identifying** practical, cost-effective practices that regenerate the rangelands to support production into the future.
- **Evaluating** new ways to diversify farm income in the rangelands.



- 13 partners
- \$1.69M
- Now – 01 October 2024

- Researchers, producers, educators, carbon project managers...

Designed in close collaboration with producers to focus on soil, plants, animals and people as the living skin of the rangelands

Outcome based management

- Measuring
- Monitoring
- Modelling

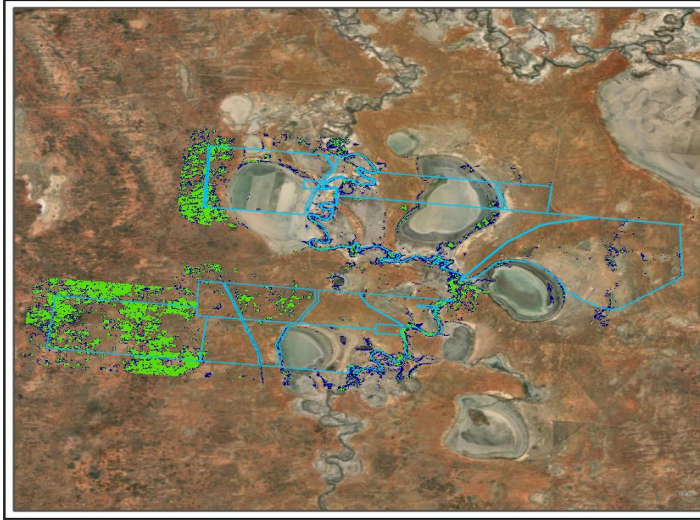
- 4 x PDS
- 20 observers
- Learn & monitor

A wide range of innovative methodologies...

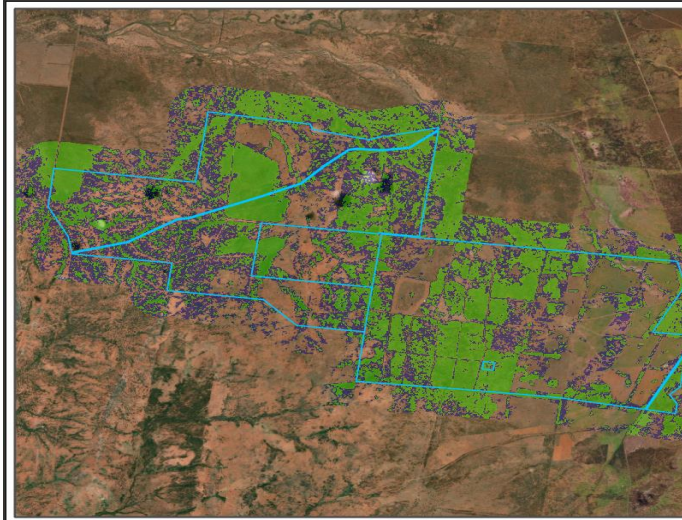
- Grazing Management
- Mixed species plantings
- Introduction of perennials
- Water ponding / spreading
- Biological soil amendments
- Soil Carbon accounting & stocks.

RLS - Producer Demonstration Sites

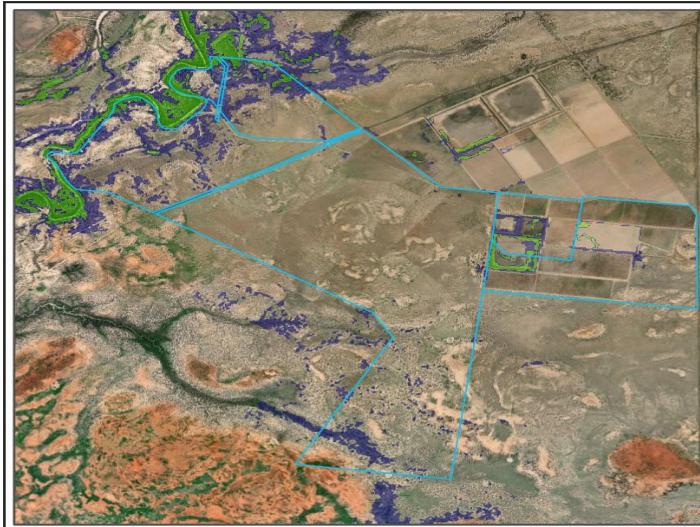




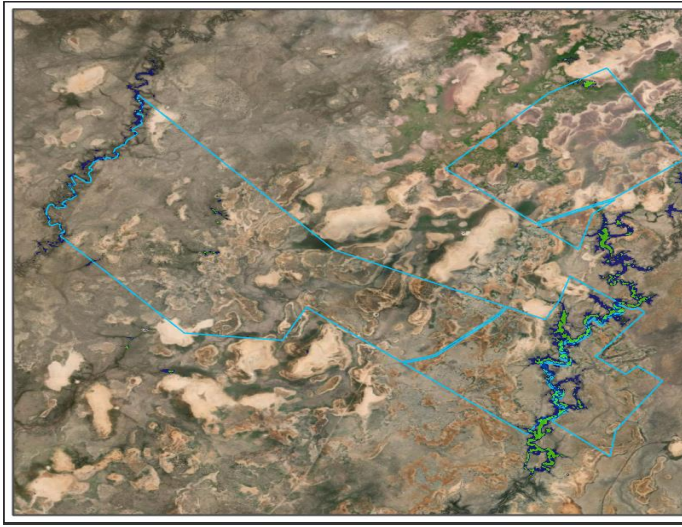
Wyndham Station and Willow Point woody cover



Etiwanda woody cover



The Angle woody cover



Bokhara Plains woody cover



Get involved in the project and keep track of progress

- **Get involved** in this project and you will get answers yourself through on farm trials and sharing knowledge with other producers and researchers.
- **Observer group (20 ppl):** learn alongside other practitioners and researchers, and test and refine your management goals through training, field days, fact sheets, case studies and networking with neighbours.
- **Keep in touch group:** receive project updates, results, and information on field days and workshops.
- **For more info:** project webpage will be on MLA website shortly (EOI form), or contact susan.orgill@dpi.nsw.gov.au (M: 0428424566) or mplumbe@mla.com.au

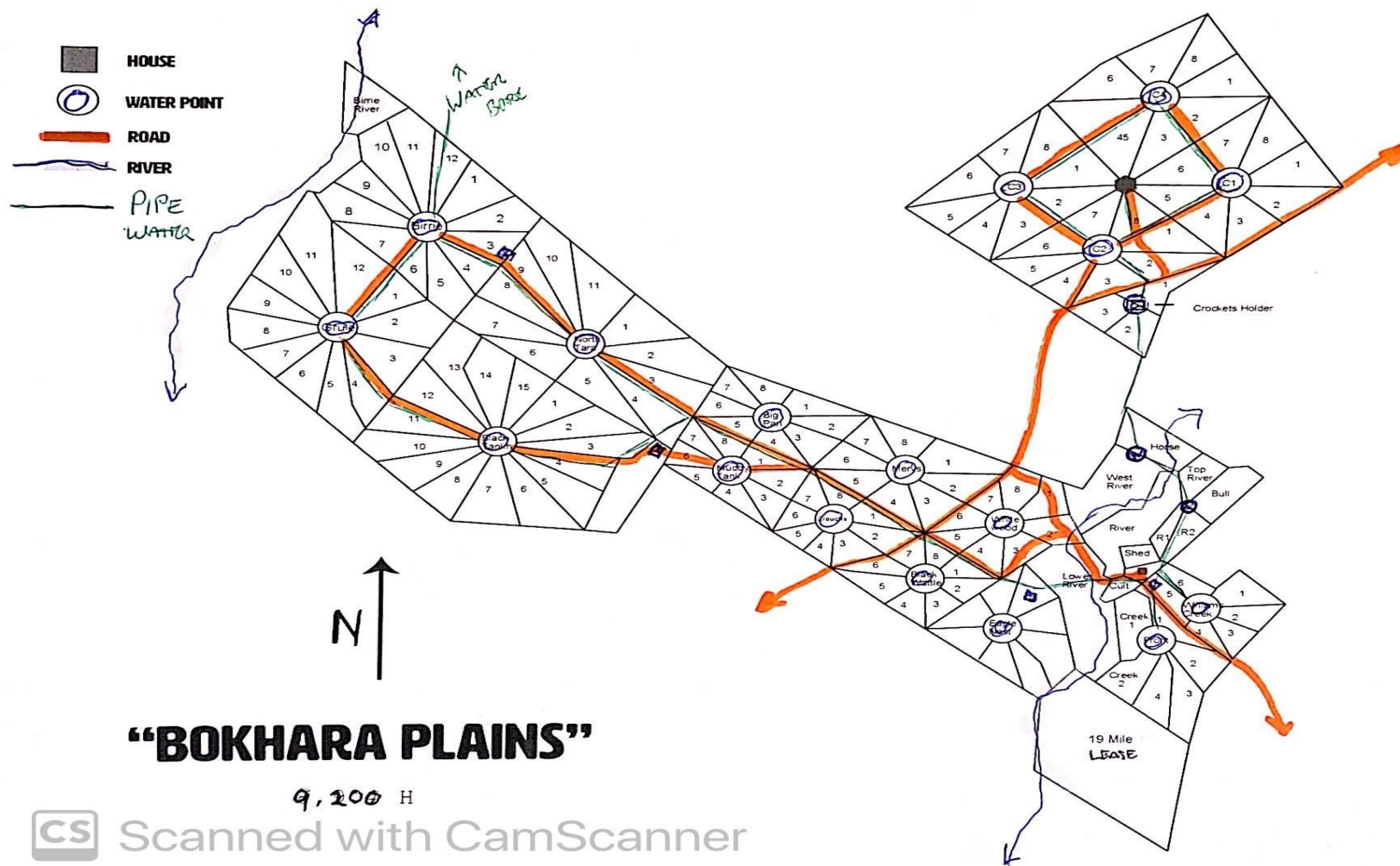
Producer Focus – “Bokhara Plains”, Brewarrina

Graham, Cathy & Harriet Finlayson

- Own 9,200 H
- Agist on another 9,000 H
- Cattle Breeding
- Sheep Trading
- Organic Certification
- Intensive Cell Grazing



“Bokhara Plains” & “Crocketts”



“BOKHARA PLAINS”

9,200 H



Scanned with CamScanner

Why we changed the way we do everything

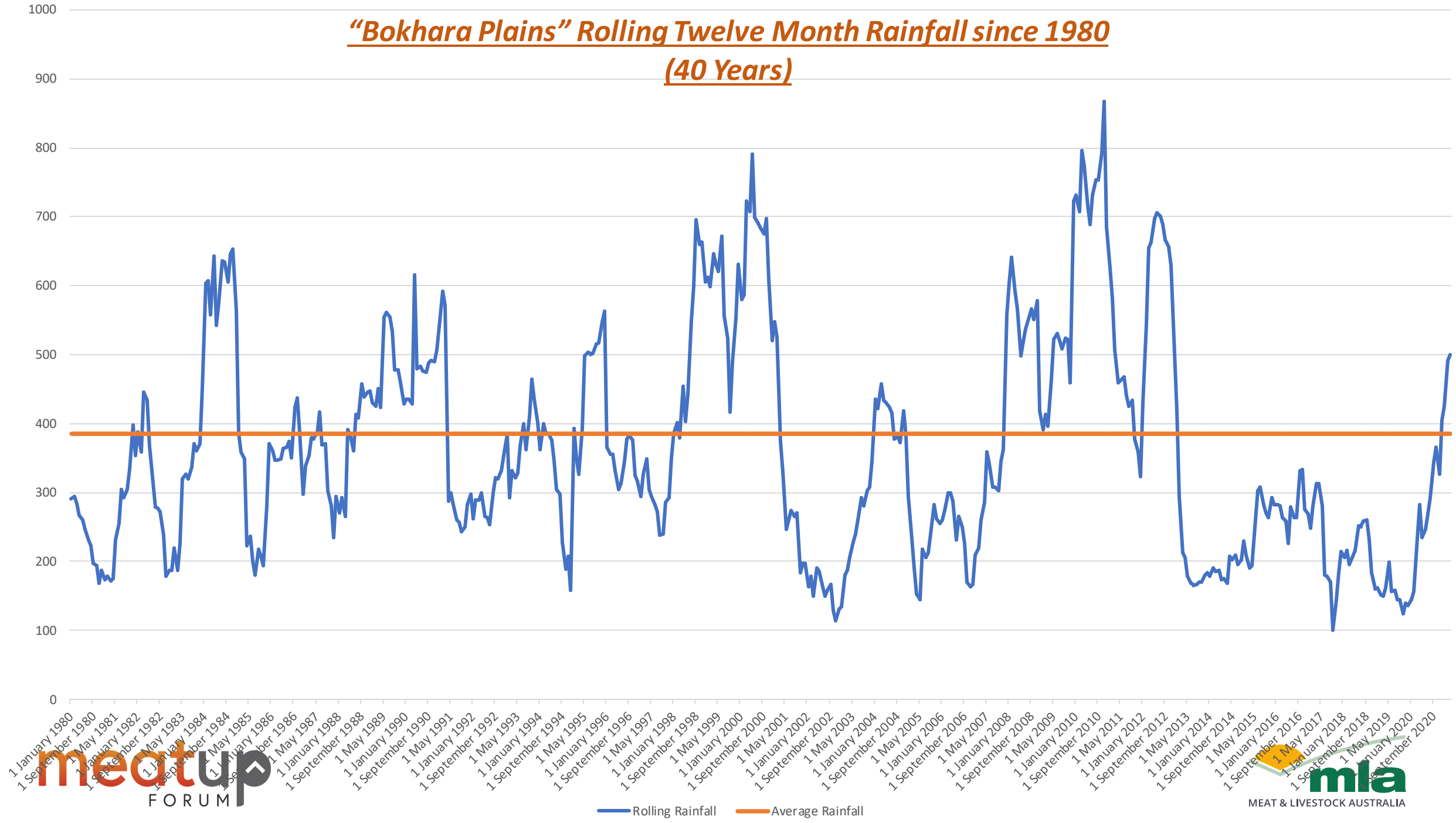
- Bought Bokhara Plains in 1999.
- The Millennium Drought 2001 – 2007.
- Frustration with degradation then ‘reading a book’.
- RCS and Executive Link.
- Finally, some good years and great progress 2008 – 2012.
- Then having half our average for 96 months.
- Stepping into the corporate world to scale up regen ag with SLM.
- Focusing back on the home block again.

With Alan Savory and Jody Butterfield 2011

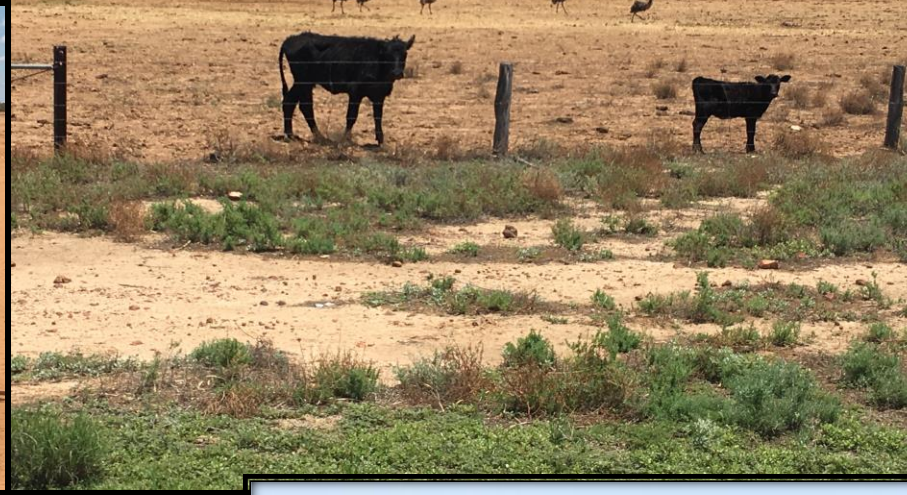




"Bokhara Plains" Rolling Twelve Month Rainfall since 1980 (40 Years)



Are we hurting or healing with this?



Big Pan 2004 (380mm year)



It is not just rain that's needed....

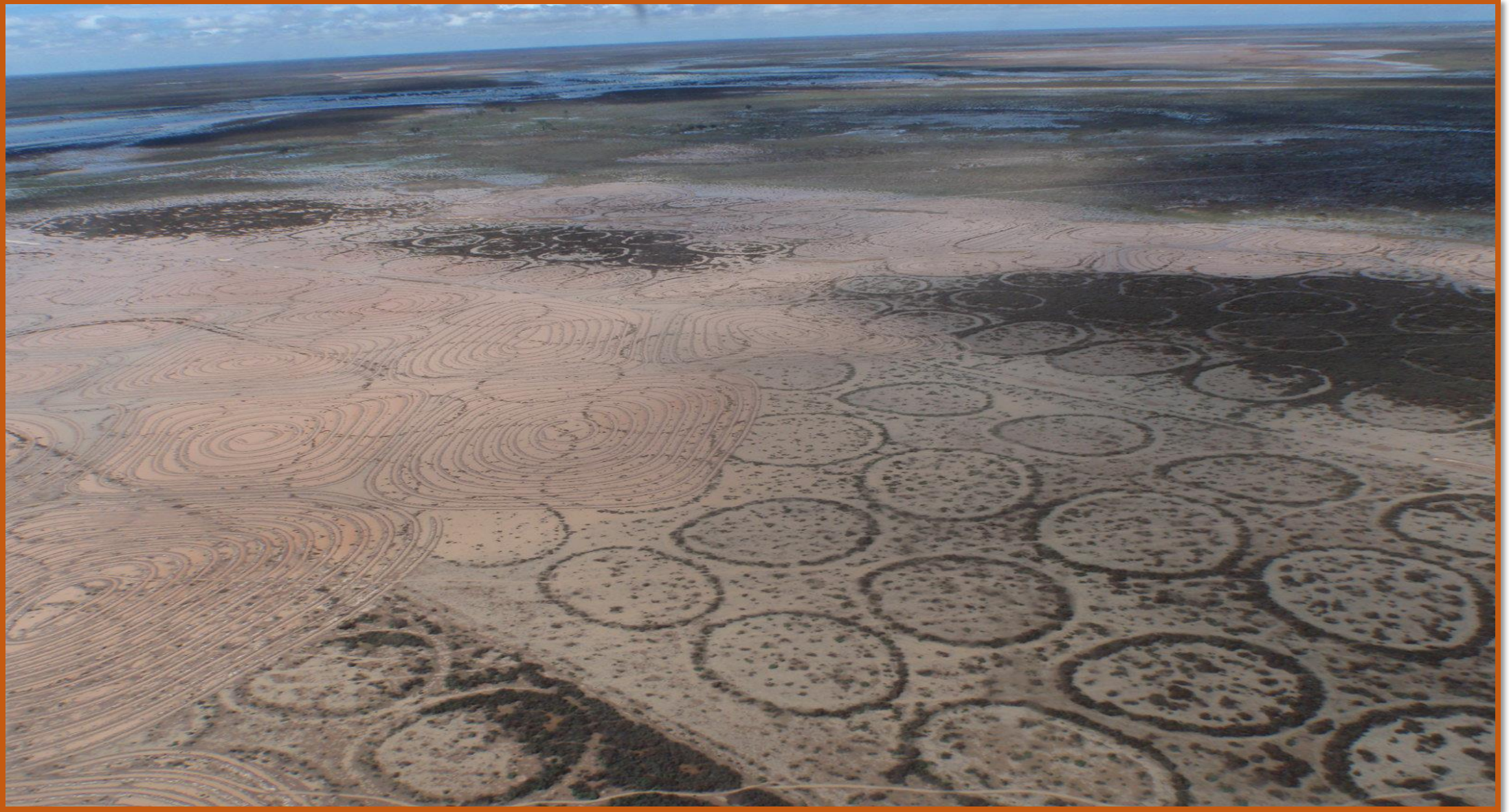


Good 'regenerative' management with cattle creates beneficial change...









Grass based genetics from Pharo - USA







Take home messages

- Improving the Ecology is our biggest free kick in the Rangelands
- We can produce one of the healthiest, highest nutrient dense foods on the planet with Red Meat
- With the right genetics, the right management systems and the right vision we can produce healthy food, be profitable, regenerate carbon back into our landscapes, repopulate regional areas & win over the public goodwill.

All at the same time.

Tools and resources

1. Carbon Neutral 2030 program overview and carbon accounting tool.
2. Producer Demonstration Site program.

