

The Rangelands Living Skins Project & “Bokhara Plains”

Harriet Finlayson
Bokhara Diversified Pty Ltd

Rangeland Living Skin Project

Gus & Kelly Whyte
Wyndham Station
(Wentworth, NSW)

Andrew & Megan Mosely
Etiwanda
(Cobar, NSW)

Tony & Meredith Thompson The
Angle
(Bourke, NSW)

Graham & Cathy Finlayson
Bokhara Plains
(Brewarrina, NSW)



Department of
Primary Industries



Australian
National
University





AIM: Measure and understand productivity, business and environmental impacts of a variety of interventions and practices designed to achieve producer- and context-specific outcomes.



- **Researching** management practices that are outcome-focused on optimising livestock carrying capacity, pasture composition, ground cover and soil carbon.
- **Identifying** practical, cost-effective practices that regenerate the rangelands to support production into the future.
- **Evaluating** new ways to diversify farm income in the rangelands.



- 13 partners
- \$1.69M
- Now – 01 October 2024

- Researchers, producers, educators, carbon project managers...

Designed in close collaboration with producers to focus on soil, plants, animals and people as the living skin of the rangelands

Outcome based management

- Measuring
- Monitoring
- Modelling

- 4 x PDS
- 20 observers
- Learn & monitor



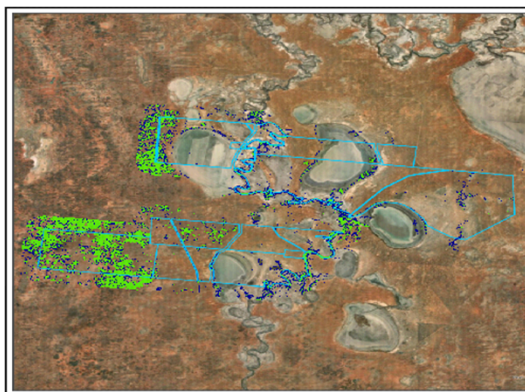
A wide range of innovative methodologies...

- Grazing Management
- Mixed species plantings
- Introduction of perennials
- Water ponding / spreading
- Biological soil amendments
- Soil Carbon accounting & stocks.

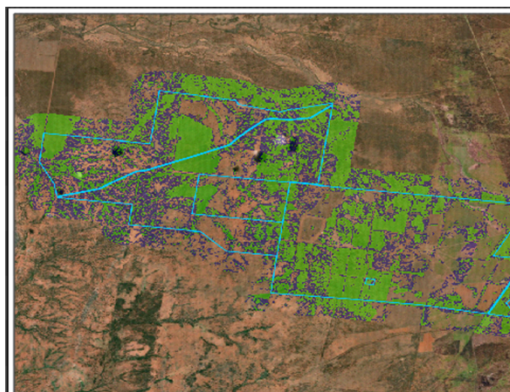


RLS - Producer Demonstration Sites

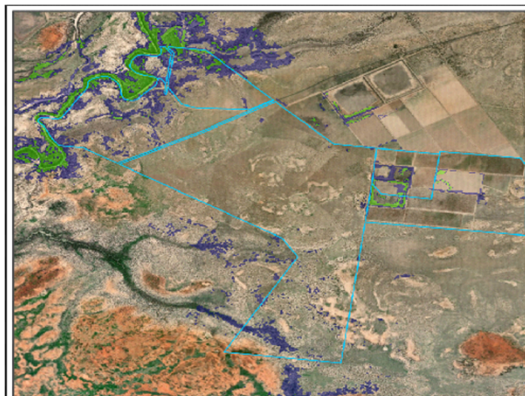




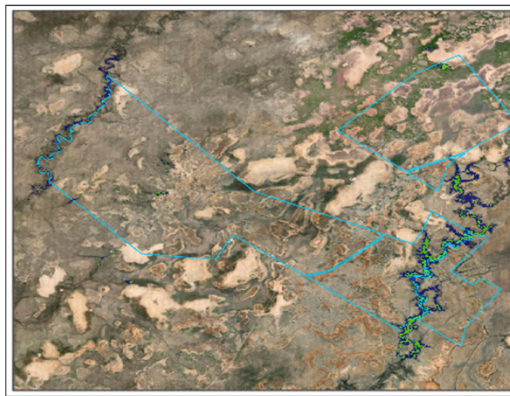
Wyndham Station and Willow Point woody cover



Etiwanda woody cover



The Angle woody cover



Bokhara Plains woody cover

Rangelands Living Skin Major activities for 2021

- Baseline measurements on Producer Demo Sites – soil, vegetation, livestock and business
- Establish carbon estimation areas
- Retrospective analysis using remotely sensed imagery
- Design replicated field trials
- Refine management interventions including: no-kill cropping, multi-species pastures, hard-seeded legumes, ponding, ripping and microbial-rich composts
- Four core producers: monthly RCS coaching, 6mo soil biology coaching
- Grazing Clinics, Soil biology workshops, Field Days
- Engage 20 observers
- Start designing citizen science component
- Project resources: fact sheets, videos and project articles

For more info and to get involved:

<https://www.mla.com.au/research-and-development/Grazing-pasture-management/rangelands-living-skin/>

<https://soilsforlife.org.au/rangelands-living-skin/>



meatup
FORUM

Get involved in the project and keep track of progress

- **Get involved** in this project and you will get answers yourself through on farm trials and sharing knowledge with other producers and researchers.
- **Observer group (20 ppl):** learn alongside other practitioners and researchers, and test and refine your management goals through training, field days, fact sheets, case studies and networking with neighbours.
- **Keep in touch group:** receive project updates, results, and information on field days and workshops.

For more info: project webpage will be on MLA website shortly (EOI form), or contact susan.orgill@dpi.nsw.gov.au (M: 0428424566) or mplumbe@mla.com.au


MEAT & LIVESTOCK AUSTRALIA

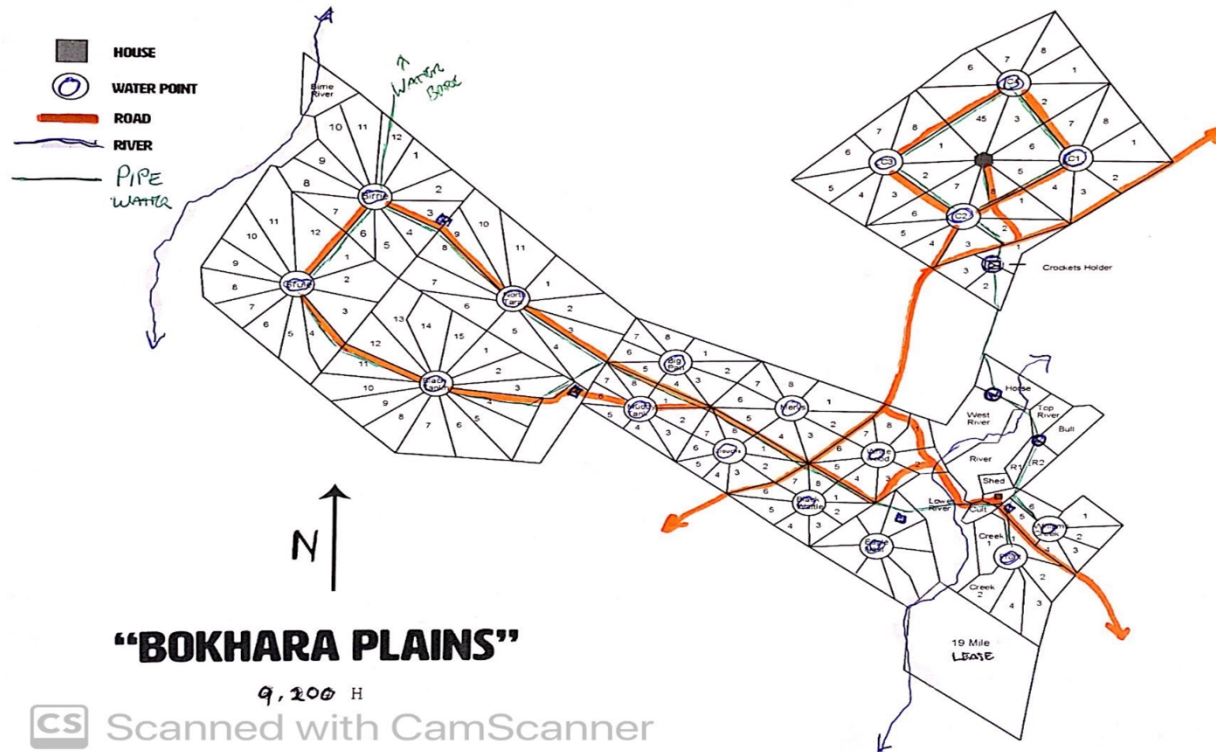
Producer Focus – “Bokhara Plains”, Brewarrina

Graham, Cathy & Harriet Finlayson

- Own 9,200 H
- Agist on another 9,000 H
- Cattle Breeding
- Sheep Trading
- Organic Certification
- Intensive Cell Grazing



“Bokhara Plains” & “Crocketts”



Why we changed the way we do everything

- Bought Bokhara Plains in 1999.
- The Millennium Drought 2001 – 2007.



meatup
FORUM



mla
MEAT & LIVESTOCK AUSTRALIA

- Frustration with degradation then 'reading a book'.
- RCS and Executive Link.



With Alan Savory and Jody Butterfield 2011

meatup
FORUM



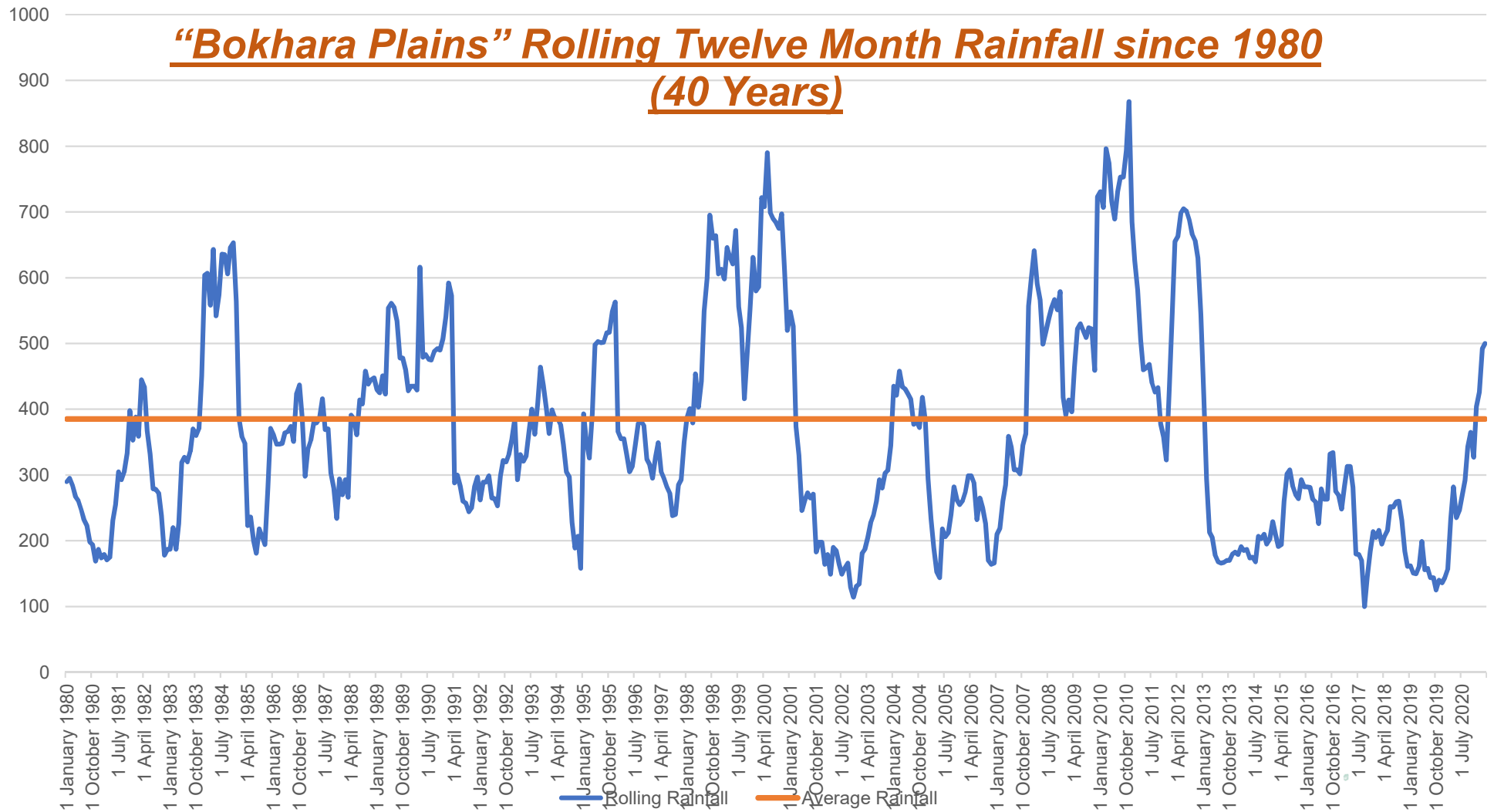

MEAT & LIVESTOCK AUSTRALIA

- Finally, some good years and great progress 2008 – 2012.
- Then having half our average for 96 months.





“Bokhara Plains” Rolling Twelve Month Rainfall since 1980
(40 Years)





meatup
FORUM



Are we hurting or healing with this?



meatup
FORUM

 mla
MEAT & LIVESTOCK AUSTRALIA

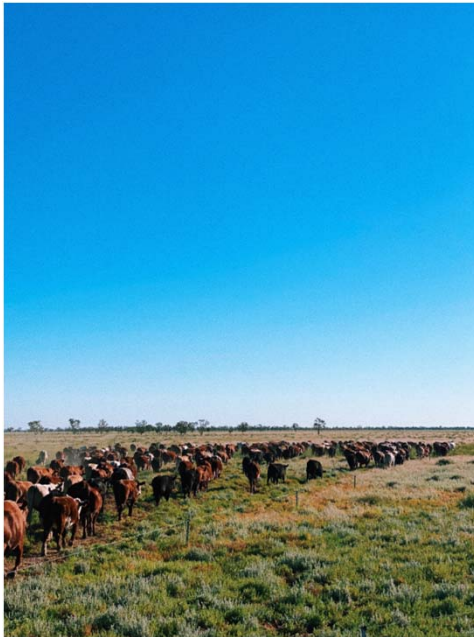
Big Pan 2004 (380mm year)



It is not just rain that's needed....



Good 'regenerative' management with cattle creates beneficial change...



meatup
FORUM




MEAT & LIVESTOCK AUSTRALIA



meatup
FORUM





meatup
FORUM



- Stepping into the corporate world to scale up regen ag with SLM.
- Focusing back on the home block again.



Grass based genetics from Pharo - USA



meatup
FORUM

mla
MEAT & LIVESTOCK AUSTRALIA



meatup
FORUM





meatup
FORUM

 mla
MEAT & LIVESTOCK AUSTRALIA

Take home messages

- Improving the Ecology is our biggest free kick in the Rangelands
- We can produce one of the healthiest, most nutrient dense foods on the planet with Red Meat
- With the right genetics, the right management systems and the right vision we can produce healthy food, be profitable, regenerate carbon back into our landscapes, repopulate regional areas & win over the public goodwill.

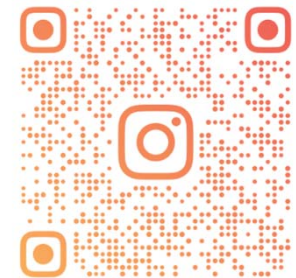
All at the same time.



Tools and resources

1. [Carbon Neutral 2030 program overview](#) and [carbon accounting tool](#).

2. [Producer Demonstration Site](#) program.



BOKHARA.PLAINS

meatup
FORUM

