



MSA Award winners

Western Australia

Stone Axe Pastoral Company



Category

MSA Feedlot WA

Average MSA index

67.24

Compliance

100%

Key drivers to deliver excellence in eating quality

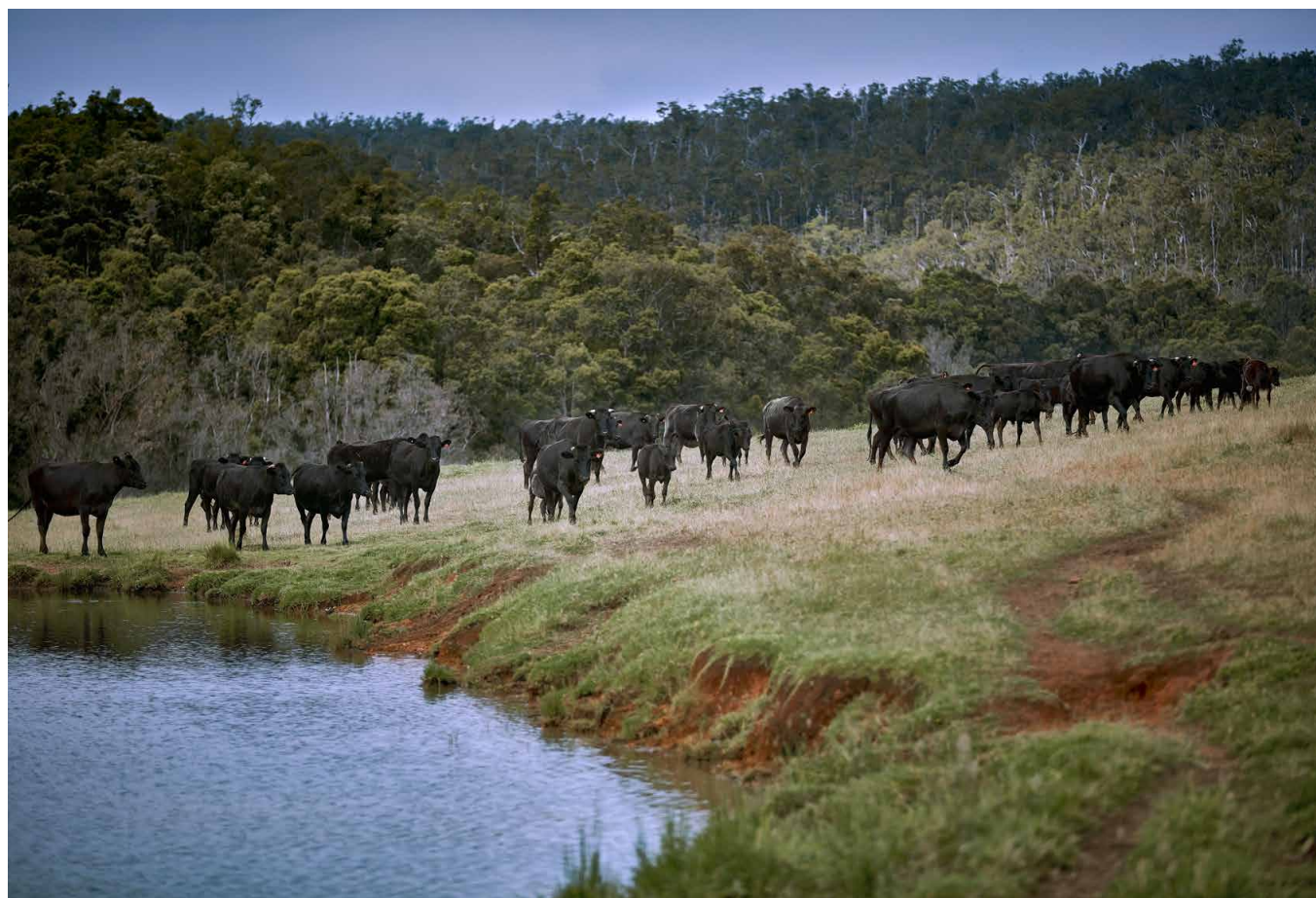
- **Data-driven management across the supply chain:** Stone Axe Pastoral records and analyses data on weight, marbling, muscle area, and pH to guide breeding, feeding, and genetic improvement strategies, ensuring continuous performance gains.
- **Low-stress handling and animal welfare focus:** Cattle are handled quietly, kept with their mates, and moved at optimal times to reduce stress – supporting better eating quality and compliance with MSA standards.
- **Consistent nutrition and long feeding programs:** Animals are kept on a rising plane of nutrition with high-quality rations (tempered rolled barley, cereal hay, legumes, supplements) and fed for a minimum of 300 days to achieve premium carcass quality.

Number of head

30,000+

Production system

Vertically integrated purebred, full blood and crossbred Wagyu production enterprise



Stone Axe Pastoral runs its Wagyu operations in WA across nine properties

BL & SJ Nairn



Category

MSA Non-Feedlot Band 1 WA

Average MSA index

67.12

Compliance

96%

Key drivers to deliver excellence in eating quality

- **Select quality bulls with strong structure:** Prioritizes bulls with good depth and structure, supported by Estimated Breeding Values (EBVs), to build herd consistency and improve growth performance.
- **Run small mobs under semi-rotational grazing:** Managing cattle in small groups across paddocks helps maintain pasture health and animal condition, reducing stress and promoting steady weight gain.
- **Calm and regular handling:** Gentle, low-stress handling without dogs and frequent yard work keeps cattle settled, improving temperament and reducing stress-related performance issues.

Number of head

220 cross breeders (120 F1, 100 F2 Angus-Friesian)

Production system

Breeding and finishing



Steven Nairn with some of his cattle on his Albany property

Mirreanda Pty Ltd



Category

MSA Non-Feedlot Band 2 WA

Average MSA index

67.21

Compliance

99%

Key drivers to deliver excellence in eating quality

- **Healthier soil for better pasture and stronger cattle:** Peter shifted from synthetic fertilisers to a biological approach using fungi, fish, amino acids, molasses, and silica – improving soil health and reducing input costs.
- **Let the land set the pace:** A 30-day rotational grazing system allows pastures time to recover, reduces worm pressure and supports sustainable stocking rates.
- **Quiet, low-stress handling:** Calm and respectful cattle handling improves animal welfare, reduces stress, and contributes to consistent carcass quality.

Number of head

80–90 Angus-Friesian cross breeders

Production system

Breeding and finishing



Peter Dawson runs around 80 to 90 Angus-Friesian cross breeders joined to Angus bulls