

# Business EDGE for grazing businesses



Business EDGE is a comprehensive two-day workshop for owners and managers of grazing enterprises. It's specifically designed to improve financial literacy and business skills.

**When:**  
4-5 July 2018

**Where:**  
Venue TBA  
Keith, SA

**Business EDGE** will be delivered by  
**Simon Vogt**  
Agribusiness Consultant,  
Rural Directions

## What you will learn

- Why your income tax return is of limited value in business decision making
- How to set up and use management accounts
- How to interpret financial statements and understand what they are saying to you
- Understanding the key profit drivers for the whole business, the herd and the flock
- How to manage financial risk
- How to allocate capital in a rational manner for a better return on the investment
- ...and much more

Business EDGE workshops have been run across northern Australia since 2010 with over 500 participants completing the course so far. This course follows from that experience and has been modified to have specific relevance to southern Australia, while still retaining all the key financial and business principles. Each participant will receive a full set of background and course notes, a hardcopy of the PowerPoint presentation used for teaching, and a USB drive with a suite of spreadsheet based decision support tools used in the course.

The course is taught on a case study basis to bring more meaning to the underlying principles and with all the concepts taught and discussed well-grounded in a practical example from the case study.



**Prices (excl of GST)**  
1 person = \$1,500  
2 or more people from  
the same business  
= \$1,250 per person



**Early Bird Discount**  
\$250 less per person  
if registered 2 weeks  
prior to workshop  
(by 20 June 2018)



**To register now**  
Contact Rural Directions  
T: 08 8841 4500  
E: [admin@ruraldirections.com](mailto:admin@ruraldirections.com)  
W: [www.ruraldirections.com/events](http://www.ruraldirections.com/events)

## *What do other producers think of Business Edge?*

### General feedback

“One of the most influential courses I have done in agriculture... so much so I've done it twice!”

“Very beneficial in helping my ability to read financials and apply to my own business.”

“A complete new look at current practices in terms of profitability and efficiency.”

“Very beneficial moving forward. It will help us to create a clear path and directions for the business.”

“Most relevant workshop I've ever been to!”

“I came in with a below basic knowledge of business and am leaving with the confidence to really analyse our business.”

### The presenter

“Good depth of knowledge and how to communicate real examples.”

“Very good, like Simon's ability to answer questions and still deliver required content.”

“Very clear and precise awareness and knowledge on all aspects.”

“Excellent, well explained advice that seems easy to apply in a practical way.”

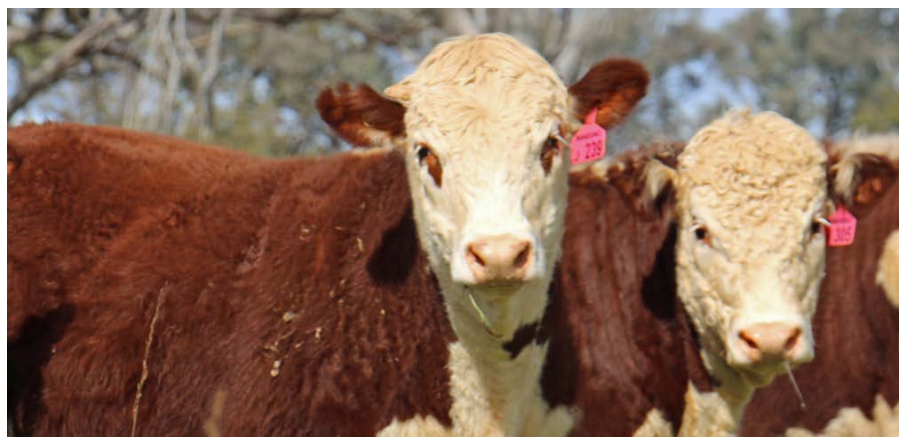
### Value for time & money

“A great investment, the overall business picture is priceless.”

“Money well spent and has given me extra confidence.”

“Money and time well spent, priceless!”

“Good, relatively small investment considering the benefits to whole of business performance that can be achieved.”



**Register now for Business EDGE**

Places are limited. Register via

[www.ruraldirections.com/events](http://www.ruraldirections.com/events)



Simon Vogt // M: 0407 959 836 // E: [svogt@ruraldirections.com](mailto:svogt@ruraldirections.com)

Or Tara Graetz // M: 0488 036 220 // E: [tgraetz@ruraldirections.com](mailto:tgraetz@ruraldirections.com)