

European Union (EU-27)

12-months ending September

Volume (tonnes swt)	Chilled		Frozen		Total	
	12-months ending September	Y-O-Y % chg.	12-months ending September	Y-O-Y % chg.	12-months ending September	Y-O-Y % chg.
Total	1,499	-24	1,931	-38	3,430	-32
Lamb	1,499	-24	1,539	-48	3,038	-38
Mutton	-		392	129	392	129

Calendar year-to-September

Chilled		Frozen		Total	
2021 YTD	Y-O-Y % chg.	2021 YTD	Y-O-Y % chg.	2021 YTD	Y-O-Y % chg.
714	-17	1,138	-52	1,852	-43
714	-17	958	-59	1,673	-48
-	-	180	545	180	545

Month of September

Chilled			Frozen			Total		
2021 September	M-O-M % chg.	Y-O-Y % chg.	2021 September	M-O-M % chg.	Y-O-Y % chg.	2021 September	M-O-M % chg.	Y-O-Y % chg.
55	105	-31	255	23	-21	310	32	-23
55	105	-31	194	12	-40	249	24	-38
-	-	-	61	76	-	61	76	-

United Kingdom

12-months ending September

Volume (tonnes swt)	Chilled		Frozen		Total	
	12-months ending September	Y-O-Y % chg.	12-months ending September	Y-O-Y % chg.	12-months ending September	Y-O-Y % chg.
Total	2,030	8	7,571	5	9,601	6
Lamb	2,030	8	4,563	6	6,593	7
Mutton	-		3,008	3	3,008	3

Calendar year-to-September

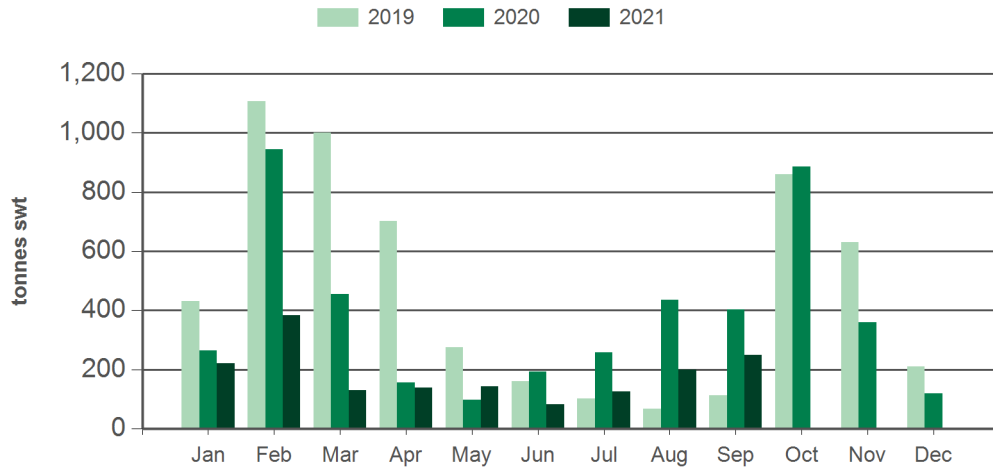
Chilled		Frozen		Total	
2021 YTD	Y-O-Y % chg.	2021 YTD	Y-O-Y % chg.	2021 YTD	Y-O-Y % chg.
1,407	-8	5,130	9	6,537	5
1,407	-8	3,114	12	4,521	5
-	-	2,016	4	2,016	4

Month of September

Chilled			Frozen			Total		
2021 September	M-O-M % chg.	Y-O-Y % chg.	2021 September	M-O-M % chg.	Y-O-Y % chg.	2021 September	M-O-M % chg.	Y-O-Y % chg.
173	35	-2	901	59	53	1,074	54	41
173	35	-2	460	22	25	632	25	16
-	-	-	441	131	100	441	131	100

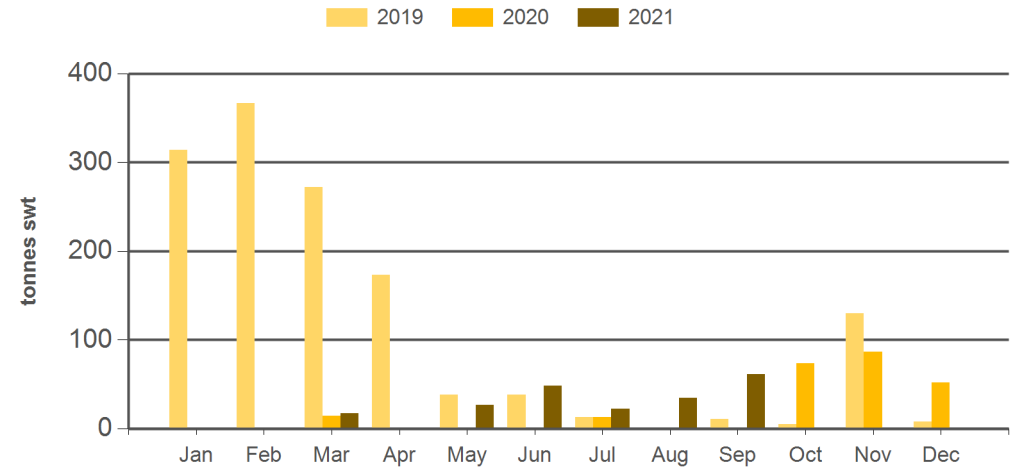
Source: DAWR. YTD = Calendar year-to-September. Y-O-Y = Year-on-year. M-O-M = Month-on-month. SWT = Shipped weight. For further information email globalindustryinsights@mla.com.au.

Monthly lamb exports to the EU



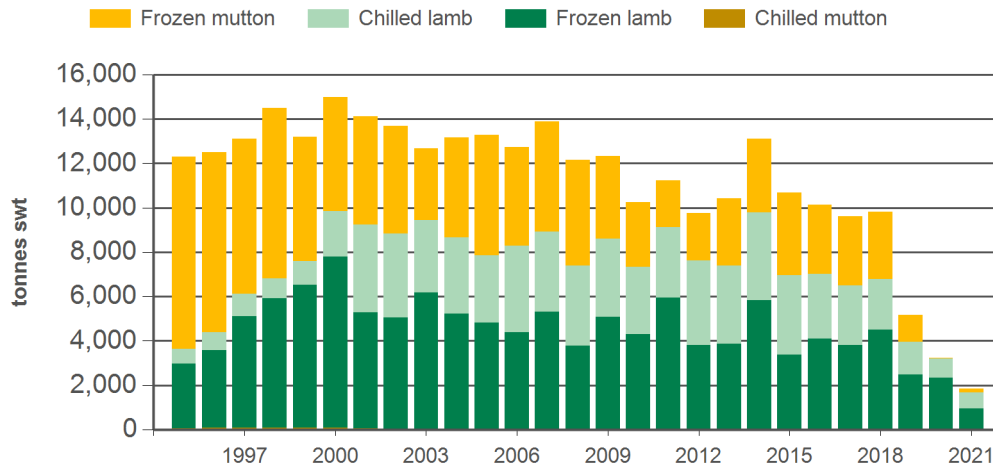
Source: DAWR, Prepared by MLA

Monthly mutton exports to the EU



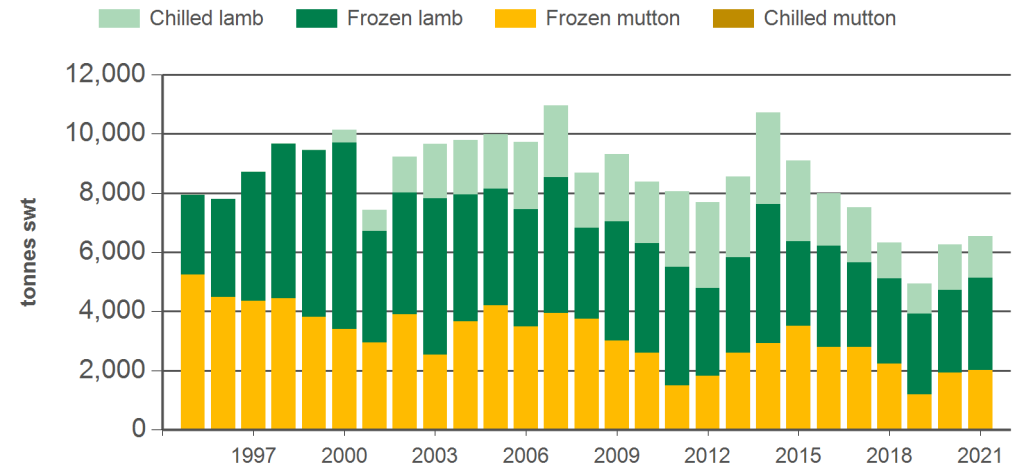
Source: DAWR, Prepared by MLA

Year-to-September sheepmeat exports to the EU



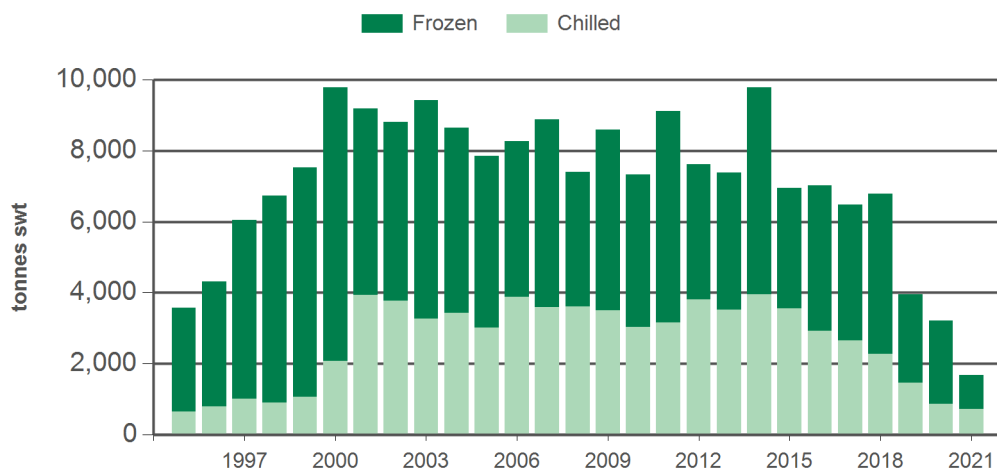
Source: DAWR, Prepared by MLA

Year-to-September sheepmeat exports to the UK



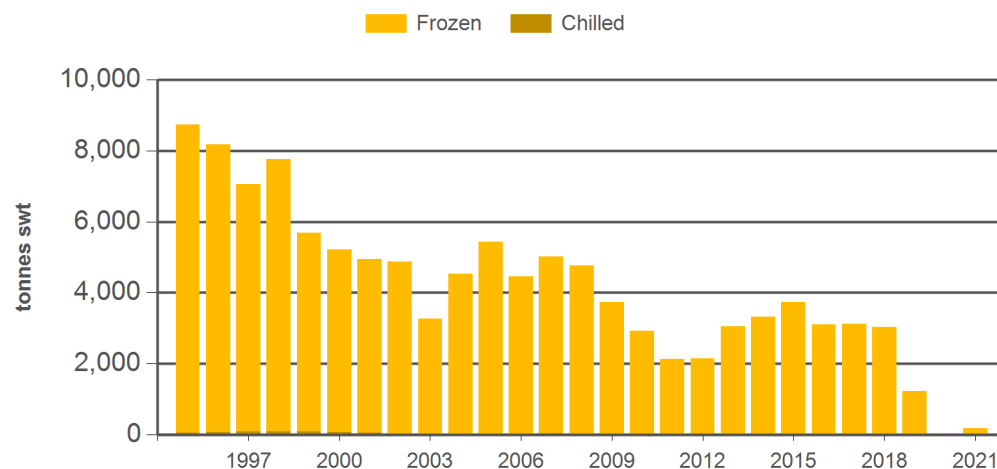
Source: DAWR, Prepared by MLA

Year-to-September lamb exports to the EU



Source: DAWR, Prepared by MLA

Year-to-September mutton exports to the EU



Source: DAWR, Prepared by MLA

Historical sheepmeat exports to the European Union (EU-27) - Calendar year totals

Volume (tonnes swt)	2006	2007	2008	2009	2010	2011	2012	2013	2014	2015	2016	2017	2018	2019	2020	2021 YTD	Y-O-Y % chg.
Total	18,827	19,734	19,015	19,099	16,893	16,458	15,852	16,735	18,758	16,195	16,471	15,454	15,295	7,028	4,813	1,852	-43
Lamb	11,808	12,734	11,581	13,730	11,951	12,930	12,129	11,747	14,042	10,656	11,512	10,281	10,008	5,658	4,573	1,673	-48
Mutton	7,020	7,000	7,434	5,370	4,941	3,528	3,723	4,988	4,716	5,539	4,959	5,174	5,288	1,369	240	180	545

Historical sheepmeat exports to the United Kingdom - Calendar year totals

Volume (tonnes swt)	2006	2007	2008	2009	2010	2011	2012	2013	2014	2015	2016	2017	2018	2019	2020	2021 YTD	Y-O-Y % chg.
Total	13,604	14,643	13,058	13,826	13,151	11,426	12,296	13,354	14,832	12,921	12,378	10,927	9,698	7,788	9,313	6,537	5
Lamb	8,185	9,105	7,104	9,384	8,754	8,780	9,016	9,124	10,561	7,806	7,950	6,567	5,691	5,616	6,388	4,521	5
Mutton	5,418	5,539	5,954	4,442	4,397	2,646	3,279	4,230	4,271	5,115	4,428	4,360	4,006	2,172	2,925	2,016	4

Source: DAWR. YTD = Calendar year-to-September. SWT = Shipped weight. For further information email globalindustryinsights@mla.com.au.