

#### European Union (UK inclusive)

##### 12-months ending March

Volume (tonnes swt)	Chilled		Frozen		Total	
	12-months ending March	Y-O-Y % chg.	12-months ending March	Y-O-Y % chg.	12-months ending March	Y-O-Y % chg.
Total	3,581	-8	9,627	-14	13,208	-12
Lamb	3,581	-8	7,074	15	10,655	7
Mutton	-	-100	2,553	-50	2,553	-50

##### Calendar year-to-March

Chilled		Frozen		Total	
2020 YTD	Y-O-Y % chg.	2020 YTD	Y-O-Y % chg.	2020 YTD	Y-O-Y % chg.
1,320	19	3,061	28	4,381	25
1,320	19	2,261	58	3,581	41
-	-	800	-16	800	-16

##### Month of March

Chilled			Frozen			Total		
2020 March	M-O-M % chg.	Y-O-Y % chg.	2020 March	M-O-M % chg.	Y-O-Y % chg.	2020 March	M-O-M % chg.	Y-O-Y % chg.
224	-72	-43	1,058	-6	21	1,282	-33	1
224	-72	-43	830	9	37	1,054	-32	5
-	-	-	228	-36	-16	228	-36	-16

#### United Kingdom

##### 12-months ending March

Volume (tonnes swt)	Chilled		Frozen		Total	
	12-months ending March	Y-O-Y % chg.	12-months ending March	Y-O-Y % chg.	12-months ending March	Y-O-Y % chg.
Total	1,604	1	6,983	-11	8,586	-9
Lamb	1,604	1	4,733	19	6,336	14
Mutton	-	-	2,250	-42	2,250	-42

##### Calendar year-to-March

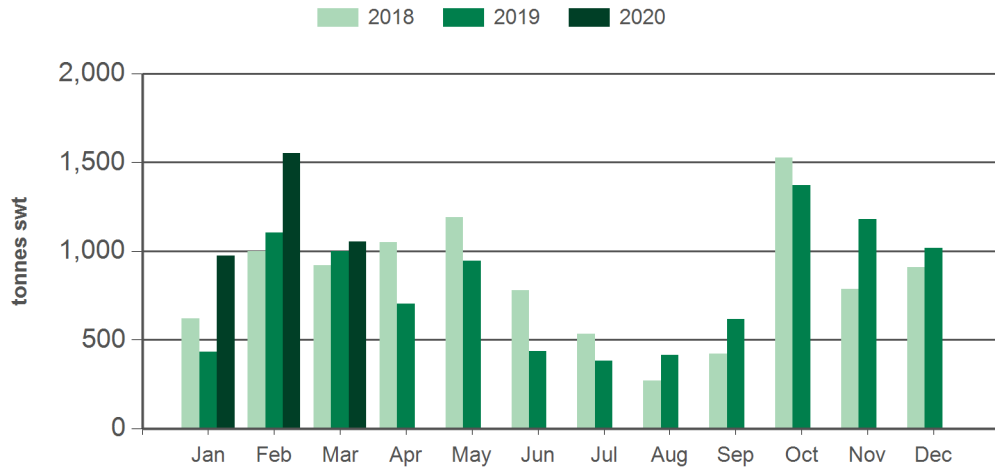
Chilled		Frozen		Total	
2020 YTD	Y-O-Y % chg.	2020 YTD	Y-O-Y % chg.	2020 YTD	Y-O-Y % chg.
643	60	2,060	37	2,703	42
643	60	1,275	60	1,918	60
-	-	785	11	785	11

##### Month of March

Chilled			Frozen			Total		
2020 March	M-O-M % chg.	Y-O-Y % chg.	2020 March	M-O-M % chg.	Y-O-Y % chg.	2020 March	M-O-M % chg.	Y-O-Y % chg.
187	-31	10	625	-11	8	812	-16	8
187	-31	10	412	21	11	598	-2	11
-	-	-	213	-40	1	213	-40	1

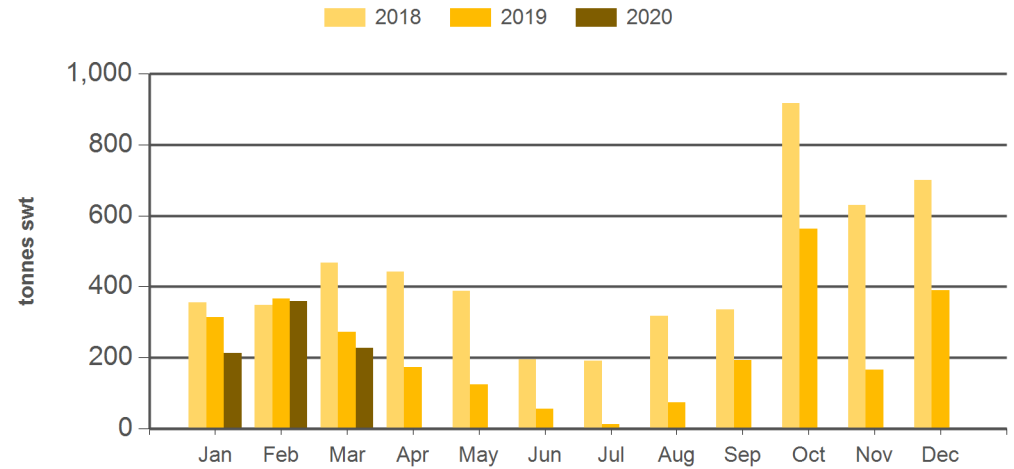
Source: DAWR. YTD = Calendar year-to-March. Y-O-Y = Year-on-year. M-O-M = Month-on-month. SWT = Shipped weight. For further information email [globalindustryinsights@mla.com.au](mailto:globalindustryinsights@mla.com.au).

#### Monthly lamb exports to the EU



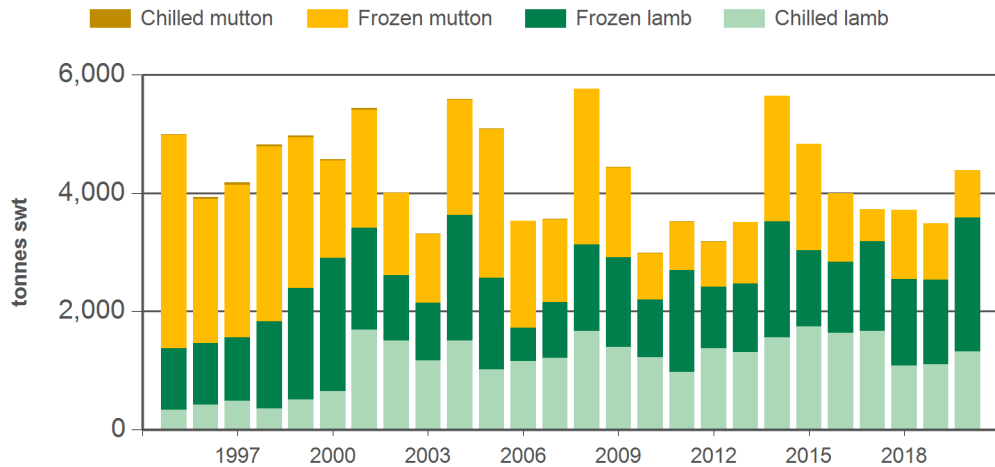
Source: DAWR, Prepared by MLA

#### Monthly mutton exports to the EU



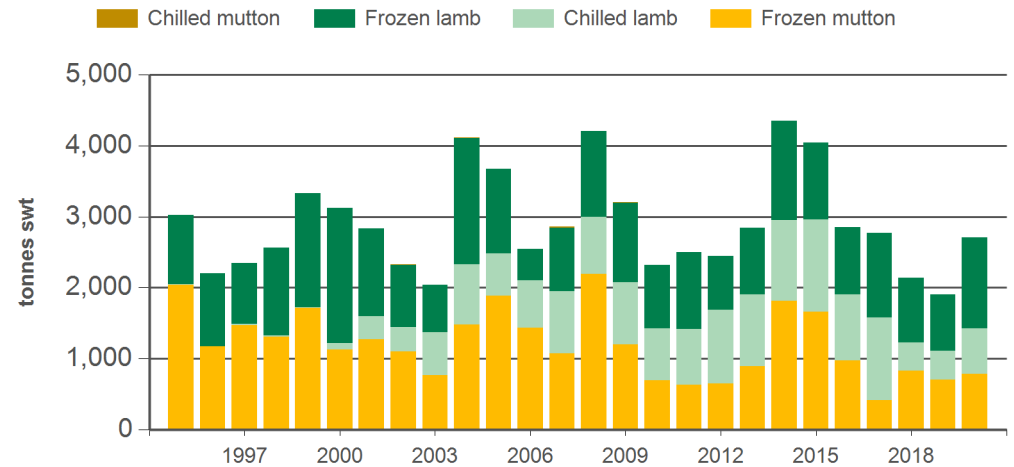
Source: DAWR, Prepared by MLA

#### Year-to-March sheepmeat exports to the EU



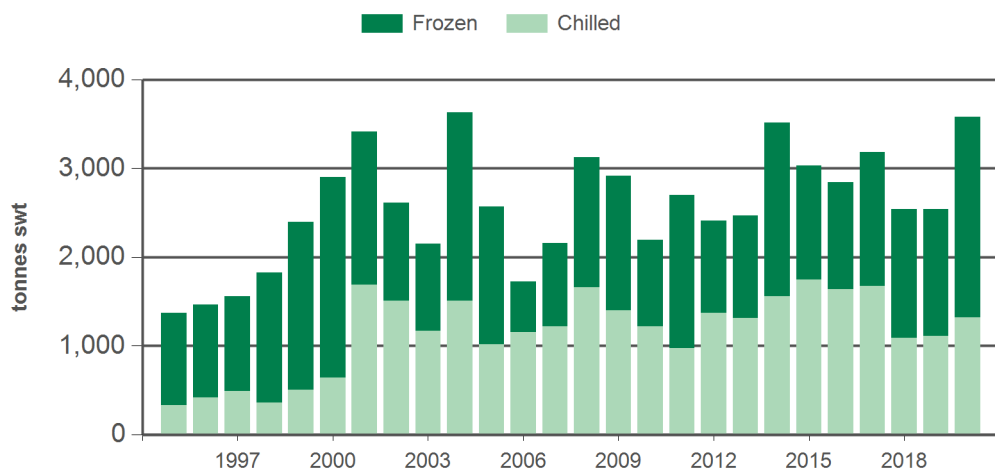
Source: DAWR, Prepared by MLA

#### Year-to-March sheepmeat exports to the UK



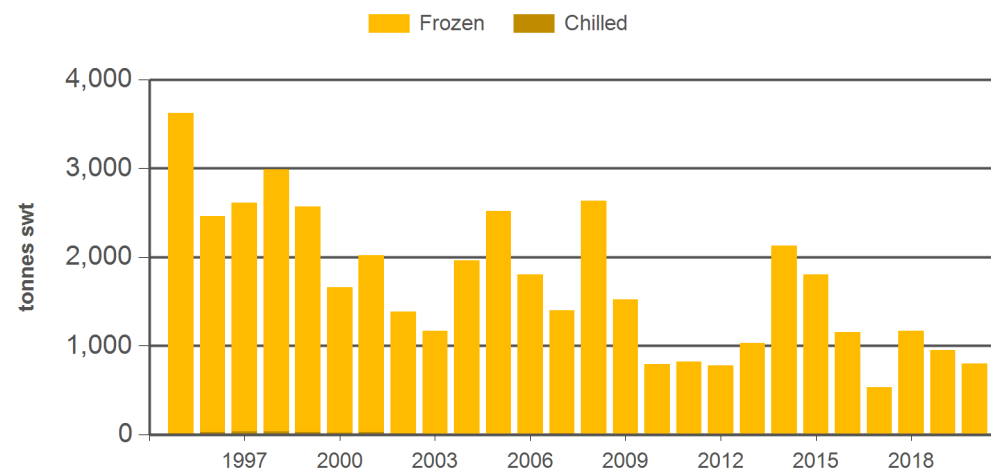
Source: DAWR, Prepared by MLA

#### Year-to-March lamb exports to the EU



Source: DAWR, Prepared by MLA

#### Year-to-March mutton exports to the EU



Source: DAWR, Prepared by MLA

#### Historical sheepmeat exports to the European Union (UK inclusive) - Calendar year totals

Volume (tonnes swt)	2005	2006	2007	2008	2009	2010	2011	2012	2013	2014	2015	2016	2017	2018	2019	2020 YTD	Y-O-Y % chg.
Total	18,224	18,827	19,734	19,015	19,099	16,893	16,458	15,852	16,735	18,758	16,195	16,471	15,454	15,295	12,319	4,381	25
Lamb	10,592	11,808	12,734	11,581	13,730	11,951	12,930	12,129	11,747	14,042	10,656	11,512	10,281	10,008	9,613	3,581	41
Mutton	7,632	7,020	7,000	7,434	5,370	4,941	3,528	3,723	4,988	4,716	5,539	4,959	5,174	5,288	2,706	800	-16

#### Historical sheepmeat exports to the United Kingdom - Calendar year totals

Volume (tonnes swt)	2005	2006	2007	2008	2009	2010	2011	2012	2013	2014	2015	2016	2017	2018	2019	2020 YTD	Y-O-Y % chg.
Total	13,341	13,604	14,643	13,058	13,826	13,151	11,426	12,296	13,354	14,832	12,921	12,378	10,927	9,698	7,788	2,703	42
Lamb	7,601	8,185	9,105	7,104	9,384	8,754	8,780	9,016	9,124	10,561	7,806	7,950	6,567	5,691	5,616	1,918	60
Mutton	5,740	5,418	5,539	5,954	4,442	4,397	2,646	3,279	4,230	4,271	5,115	4,428	4,360	4,006	2,172	785	11

Source: DAWR. YTD = Calendar year-to-March. SWT = Shipped weight. For further information email [globalindustryinsights@mla.com.au](mailto:globalindustryinsights@mla.com.au).