

European Union (UK inclusive)

12-months ending November

Volume (tonnes swt)	Chilled		Frozen		Total	
	12-months ending November	Y-O-Y % chg.	12-months ending November	Y-O-Y % chg.	12-months ending November	Y-O-Y % chg.
Total	3,940	-17	11,766	12	15,706	3
Lamb	3,939	-17	6,488	16	10,427	1
Mutton	1	548	5,278	8	5,279	8

Calendar year-to-November

Chilled		Frozen		Total	
2018 YTD	Y-O-Y % chg.	2018 YTD	Y-O-Y % chg.	2018 YTD	Y-O-Y % chg.
3,661	-10	10,025	7	13,686	2
3,660	-10	5,439	11	9,099	2
1	548	4,586	2	4,587	2

Month of November

Chilled			Frozen			Total		
2018 November	M-O-M % chg.	Y-O-Y % chg.	2018 November	M-O-M % chg.	Y-O-Y % chg.	2018 November	M-O-M % chg.	Y-O-Y % chg.
400	-59	6	1,015	-31	34	1,415	-42	25
400	-59	6	385	-29	33	785	-49	18
-	-	-	630	-31	35	630	-31	35

United Kingdom

12-months ending November

Volume (tonnes swt)	Chilled		Frozen		Total	
	12-months ending November	Y-O-Y % chg.	12-months ending November	Y-O-Y % chg.	12-months ending November	Y-O-Y % chg.
Total	1,659	-39	8,287	-	9,946	-9
Lamb	1,659	-39	4,251	4	5,910	-13
Mutton	-	-	4,036	-4	4,036	-4

Calendar year-to-November

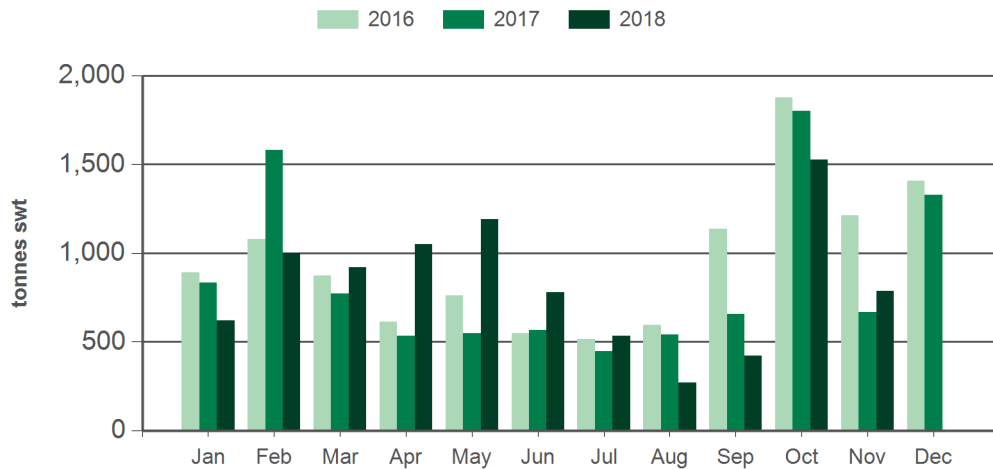
Chilled		Frozen		Total	
2018 YTD	Y-O-Y % chg.	2018 YTD	Y-O-Y % chg.	2018 YTD	Y-O-Y % chg.
1,465	-30	7,051	-5	8,516	-10
1,465	-30	3,572	-1	5,037	-12
-	-	3,480	-9	3,480	-9

Month of November

Chilled			Frozen			Total		
2018 November	M-O-M % chg.	Y-O-Y % chg.	2018 November	M-O-M % chg.	Y-O-Y % chg.	2018 November	M-O-M % chg.	Y-O-Y % chg.
54	-73	-25	830	-25	54	884	-33	45
54	-73	-25	311	-20	39	365	-38	23
-	-	-	519	-28	65	519	-28	65

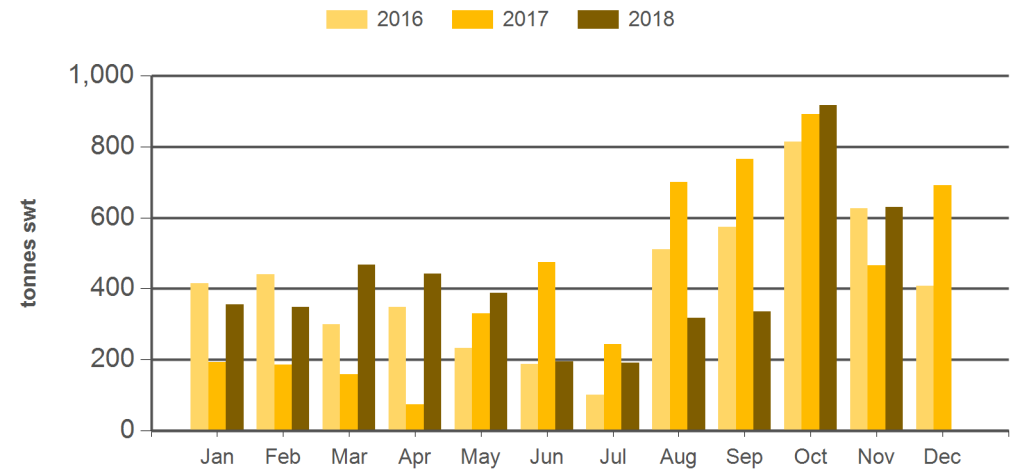
Source: DAWR. YTD = Calendar year-to-November. Y-O-Y = Year-on-year. M-O-M = Month-on-month. SWT = Shipped weight. For further information email marketinfo@mla.com.au.

Monthly lamb exports to the EU



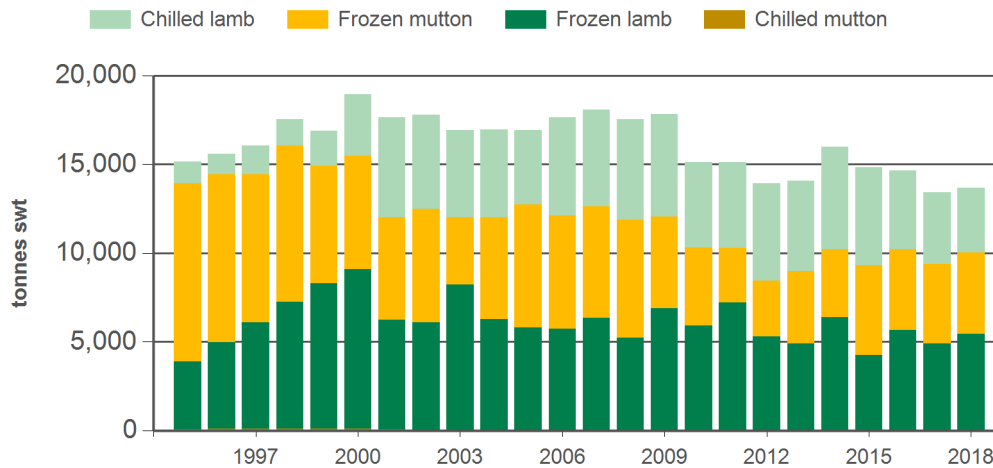
Source: DAWR, Prepared by MLA

Monthly mutton exports to the EU



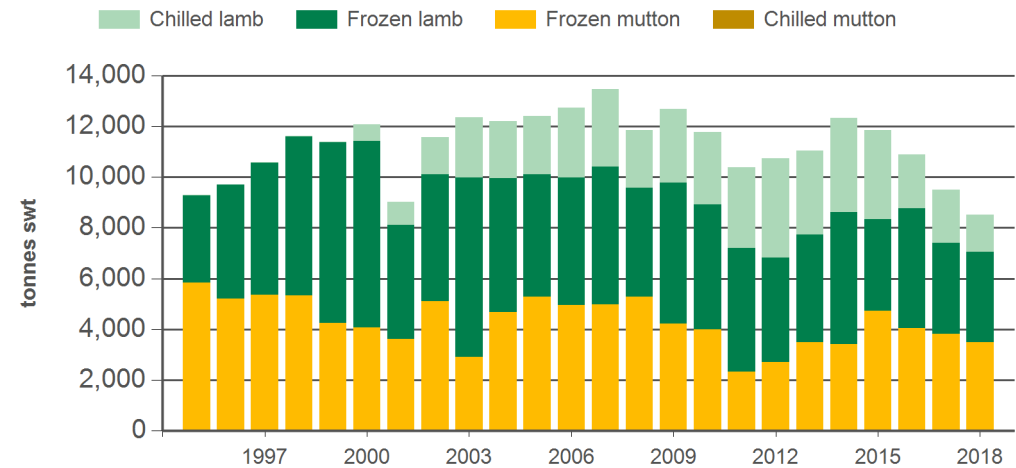
Source: DAWR, Prepared by MLA

Year-to-November sheepmeat exports to the EU



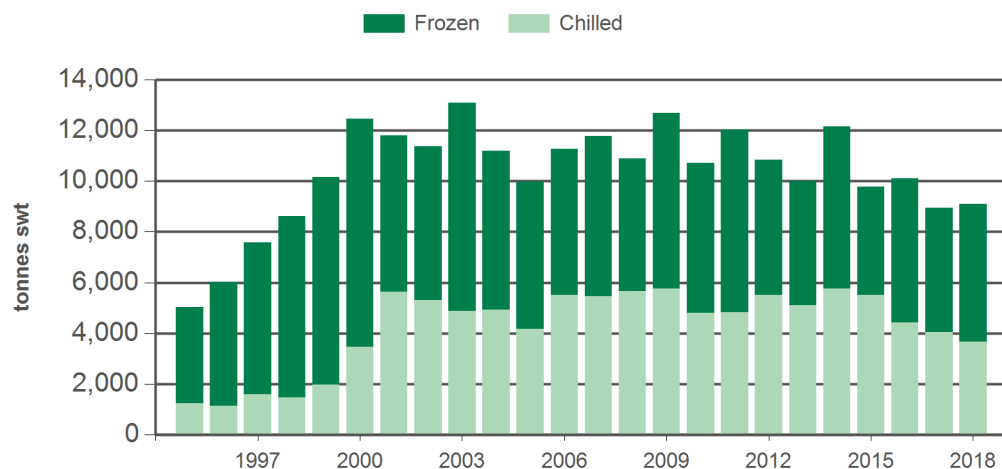
Source: DAWR, Prepared by MLA

Year-to-November sheepmeat exports to the UK



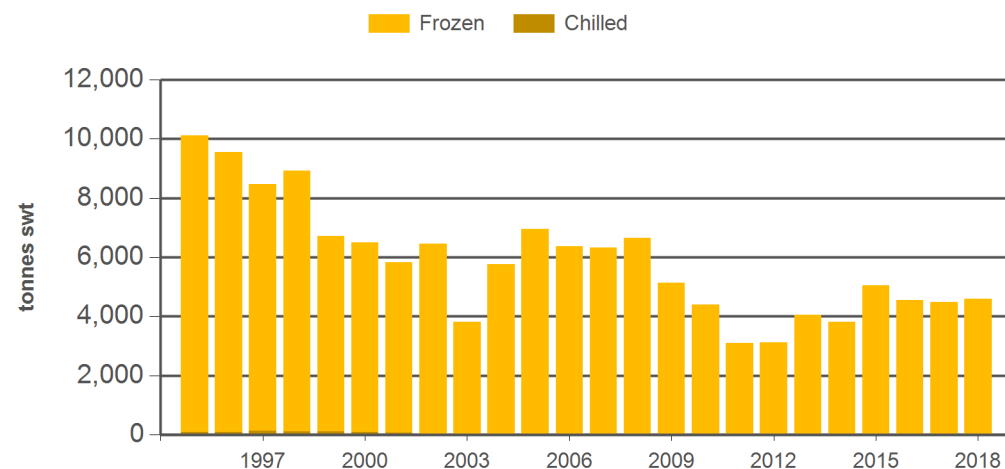
Source: DAWR, Prepared by MLA

Year-to-November lamb exports to the EU



Source: DAWR, Prepared by MLA

Year-to-November mutton exports to the EU



Source: DAWR, Prepared by MLA

Historical sheepmeat exports to the European Union (UK inclusive) - Calendar year totals

Volume (tonnes swt)	2003	2004	2005	2006	2007	2008	2009	2010	2011	2012	2013	2014	2015	2016	2017	2018 YTD	Y-O-Y % chg.
Total	19,011	19,035	18,224	18,827	19,734	19,015	19,099	16,893	16,458	15,852	16,735	18,758	16,195	16,471	15,454	13,686	2
Lamb	14,748	12,210	10,592	11,808	12,734	11,581	13,730	11,951	12,930	12,129	11,747	14,042	10,656	11,512	10,281	9,099	2
Mutton	4,262	6,825	7,632	7,020	7,000	7,434	5,370	4,941	3,528	3,723	4,988	4,716	5,539	4,959	5,174	4,587	2

Historical sheepmeat exports to the United Kingdom - Calendar year totals

Volume (tonnes swt)	2003	2004	2005	2006	2007	2008	2009	2010	2011	2012	2013	2014	2015	2016	2017	2018 YTD	Y-O-Y % chg.
Total	13,851	13,663	13,341	13,604	14,643	13,058	13,826	13,151	11,426	12,296	13,354	14,832	12,921	12,378	10,927	8,516	-10
Lamb	10,578	8,309	7,601	8,185	9,105	7,104	9,384	8,754	8,780	9,016	9,124	10,561	7,806	7,950	6,567	5,037	-12
Mutton	3,273	5,354	5,740	5,418	5,539	5,954	4,442	4,397	2,646	3,279	4,230	4,271	5,115	4,428	4,360	3,480	-9

Source: DAWR. YTD = Calendar year-to-November. SWT = Shipped weight. For further information email marketinfo@mla.com.au.