

European Union (UK inclusive)

12-months ending December

Volume (tonnes swt)	Chilled		Frozen		Total	
	12-months ending December	Y-O-Y % chg.	12-months ending December	Y-O-Y % chg.	12-months ending December	Y-O-Y % chg.
Total	3,853	-11	11,442	3	15,295	-1
Lamb	3,851	-11	6,156	3	10,008	-3
Mutton	1	548	5,286	2	5,288	2

Calendar year-to-December

Chilled		Frozen		Total	
2018 YTD	Y-O-Y % chg.	2018 YTD	Y-O-Y % chg.	2018 YTD	Y-O-Y % chg.
3,853	-11	11,442	3	15,295	-1
3,851	-11	6,156	3	10,008	-3
1	548	5,286	2	5,288	2

Month of December

Chilled			Frozen			Total		
2018 December	M-O-M % chg.	Y-O-Y % chg.	2018 December	M-O-M % chg.	Y-O-Y % chg.	2018 December	M-O-M % chg.	Y-O-Y % chg.
191	-52	-31	1,418	40	-19	1,609	14	-20
191	-52	-31	717	86	-32	908	16	-32
-	-	-	701	11	1	701	11	1

United Kingdom

12-months ending December

Volume (tonnes swt)	Chilled		Frozen		Total	
	12-months ending December	Y-O-Y % chg.	12-months ending December	Y-O-Y % chg.	12-months ending December	Y-O-Y % chg.
Total	1,587	-31	8,111	-6	9,698	-11
Lamb	1,587	-31	4,105	-4	5,691	-13
Mutton	-	-	4,006	-8	4,006	-8

Calendar year-to-December

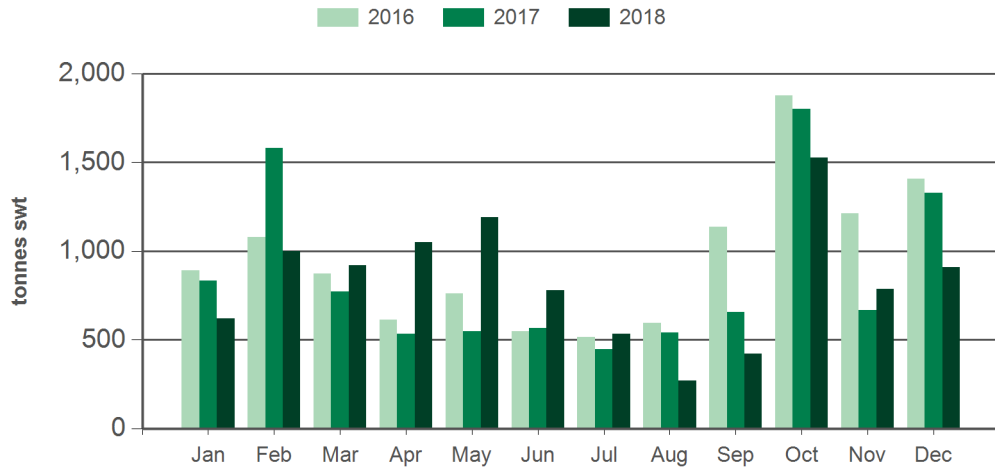
Chilled		Frozen		Total	
2018 YTD	Y-O-Y % chg.	2018 YTD	Y-O-Y % chg.	2018 YTD	Y-O-Y % chg.
1,587	-31	8,111	-6	9,698	-11
1,587	-31	4,105	-4	5,691	-13
-	-	4,006	-8	4,006	-8

Month of December

Chilled			Frozen			Total		
2018 December	M-O-M % chg.	Y-O-Y % chg.	2018 December	M-O-M % chg.	Y-O-Y % chg.	2018 December	M-O-M % chg.	Y-O-Y % chg.
122	125	-37	1,060	28	-14	1,181	34	-17
122	125	-37	533	72	-22	655	79	-25
-	-	-	527	1	-5	527	1	-5

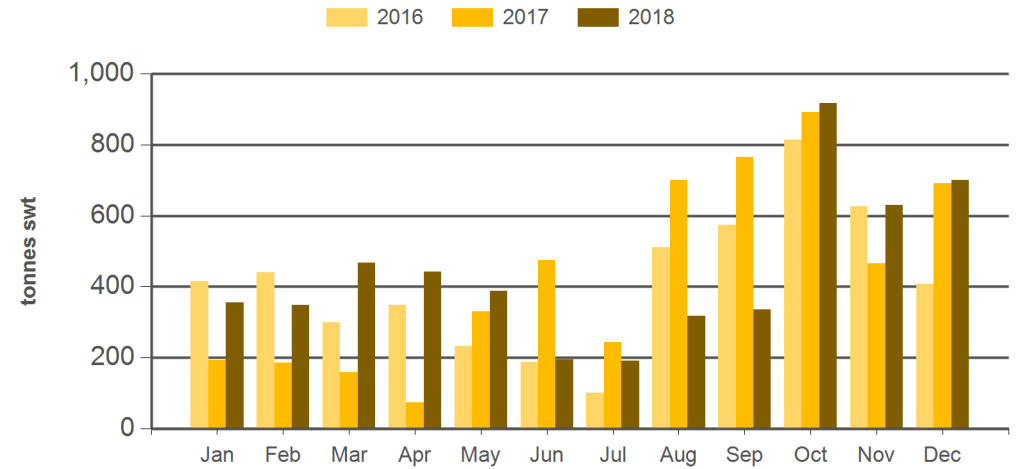
Source: DAWR. YTD = Calendar year-to-December. Y-O-Y = Year-on-year. M-O-M = Month-on-month. SWT = Shipped weight. For further information email marketinfo@mla.com.au.

Monthly lamb exports to the EU



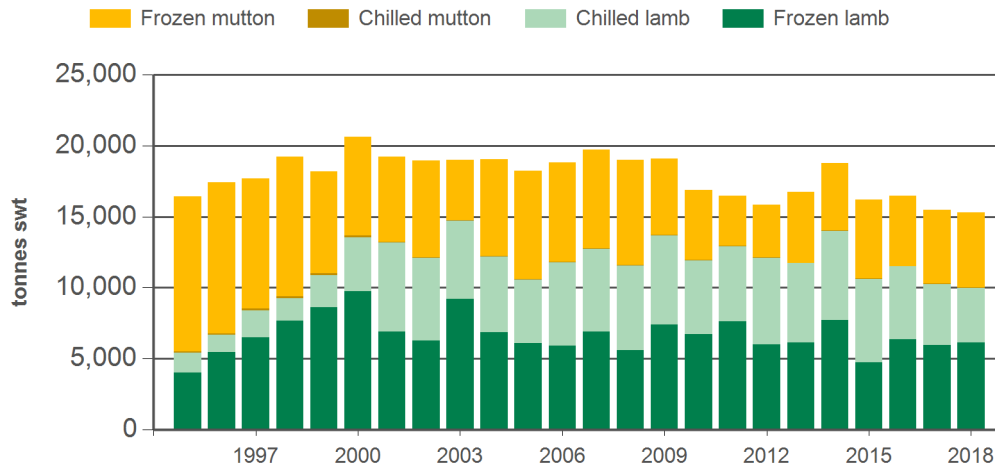
Source: DAWR, Prepared by MLA

Monthly mutton exports to the EU



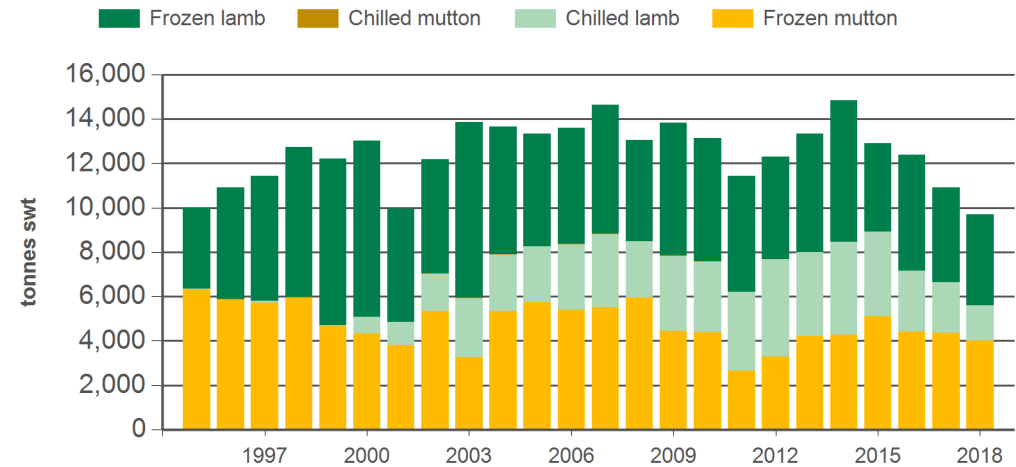
Source: DAWR, Prepared by MLA

Year-to-December sheepmeat exports to the EU



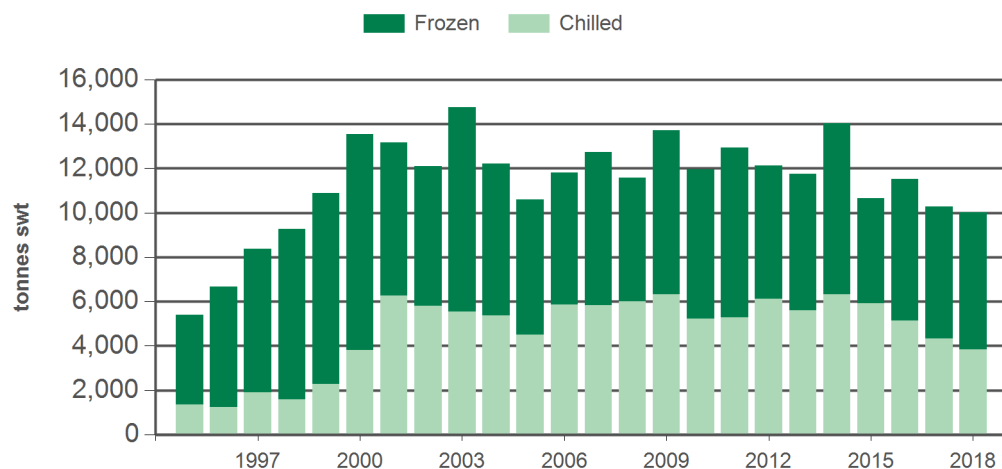
Source: DAWR, Prepared by MLA

Year-to-December sheepmeat exports to the UK



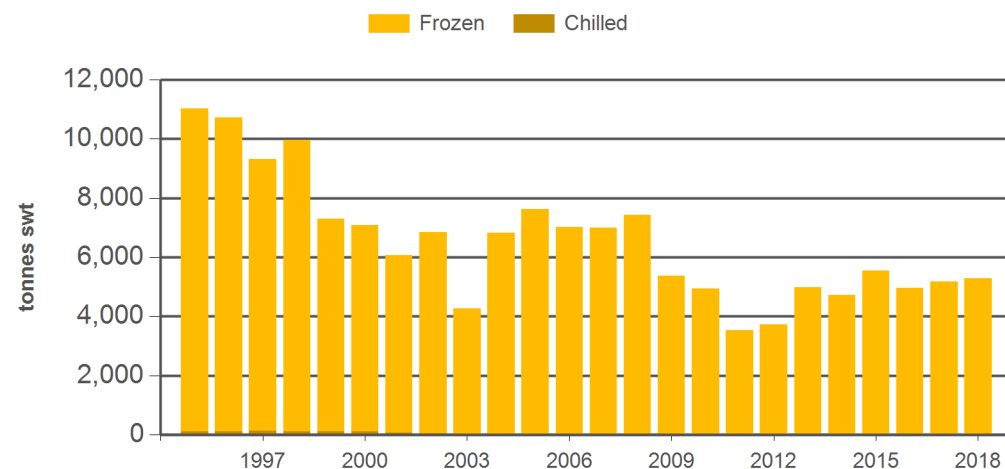
Source: DAWR, Prepared by MLA

Year-to-December lamb exports to the EU



Source: DAWR, Prepared by MLA

Year-to-December mutton exports to the EU



Source: DAWR, Prepared by MLA

Historical sheepmeat exports to the European Union (UK inclusive) - Calendar year totals

Volume (tonnes swt)	2003	2004	2005	2006	2007	2008	2009	2010	2011	2012	2013	2014	2015	2016	2017	2018 YTD	Y-O-Y % chg.
Total	19,011	19,035	18,224	18,827	19,734	19,015	19,099	16,893	16,458	15,852	16,735	18,758	16,195	16,471	15,454	15,295	-1
Lamb	14,748	12,210	10,592	11,808	12,734	11,581	13,730	11,951	12,930	12,129	11,747	14,042	10,656	11,512	10,281	10,008	-3
Mutton	4,262	6,825	7,632	7,020	7,000	7,434	5,370	4,941	3,528	3,723	4,988	4,716	5,539	4,959	5,174	5,288	2

Historical sheepmeat exports to the United Kingdom - Calendar year totals

Volume (tonnes swt)	2003	2004	2005	2006	2007	2008	2009	2010	2011	2012	2013	2014	2015	2016	2017	2018 YTD	Y-O-Y % chg.
Total	13,851	13,663	13,341	13,604	14,643	13,058	13,826	13,151	11,426	12,296	13,354	14,832	12,921	12,378	10,927	9,698	-11
Lamb	10,578	8,309	7,601	8,185	9,105	7,104	9,384	8,754	8,780	9,016	9,124	10,561	7,806	7,950	6,567	5,691	-13
Mutton	3,273	5,354	5,740	5,418	5,539	5,954	4,442	4,397	2,646	3,279	4,230	4,271	5,115	4,428	4,360	4,006	-8

Source: DAWR. YTD = Calendar year-to-December. SWT = Shipped weight. For further information email marketinfo@mla.com.au.