

#### 12-months ending March

Volume (tonnes swt)	Chilled		Frozen		Total	
	12-months ending March	Y-O-Y % chg.	12-months ending March	Y-O-Y % chg.	12-months ending March	Y-O-Y % chg.
Total	3,744	-28	11,699	6	15,443	-5
Lamb	3,744	-28	5,892	-12	9,636	-19
Mutton	-		5,807	34	5,807	34

#### Calendar year-to-March

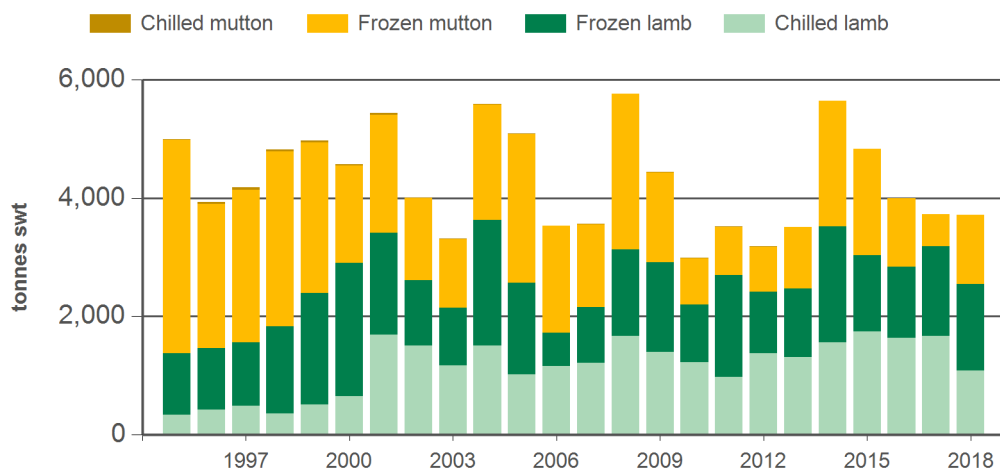
Chilled		Frozen		Total	
2018 YTD	Y-O-Y % chg.	2018 YTD	Y-O-Y % chg.	2018 YTD	Y-O-Y % chg.
1,088	-35	2,625	28	3,712	-
1,088	-35	1,453	-4	2,541	-20
-	-	1,171	118	1,171	118

#### Month of March

Chilled			Frozen			Total		
2018 March	M-O-M % chg.	Y-O-Y % chg.	2018 March	M-O-M % chg.	Y-O-Y % chg.	2018 March	M-O-M % chg.	Y-O-Y % chg.
258	-42	6	1,128	25	64	1,386	3	49
258	-42	6	661	20	25	919	-8	19
-	-	-	467	34	193	467	34	193

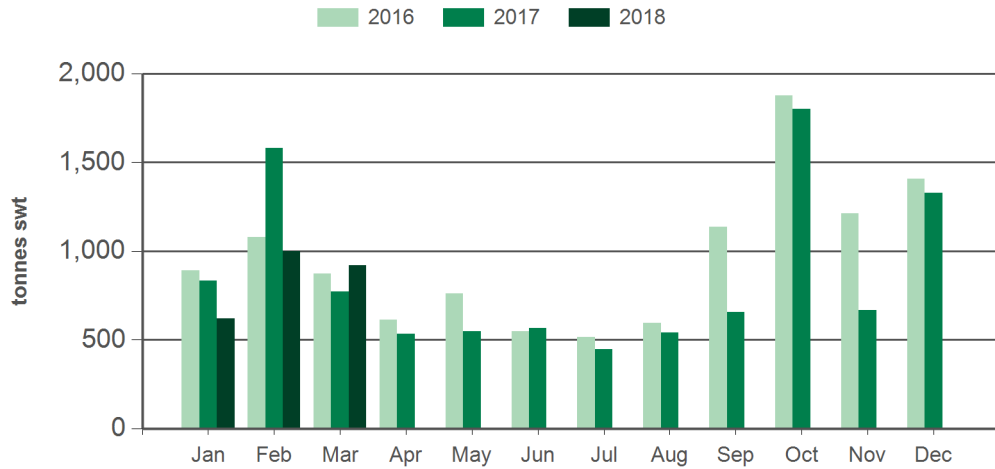
Source: DAWR. YTD = Calendar year-to-March. Y-O-Y = Year-on-year. M-O-M = Month-on-month. SWT = Shipped weight. For further information email [marketinfo@mla.com.au](mailto:marketinfo@mla.com.au).

#### Year-to-March sheepmeat exports to the EU



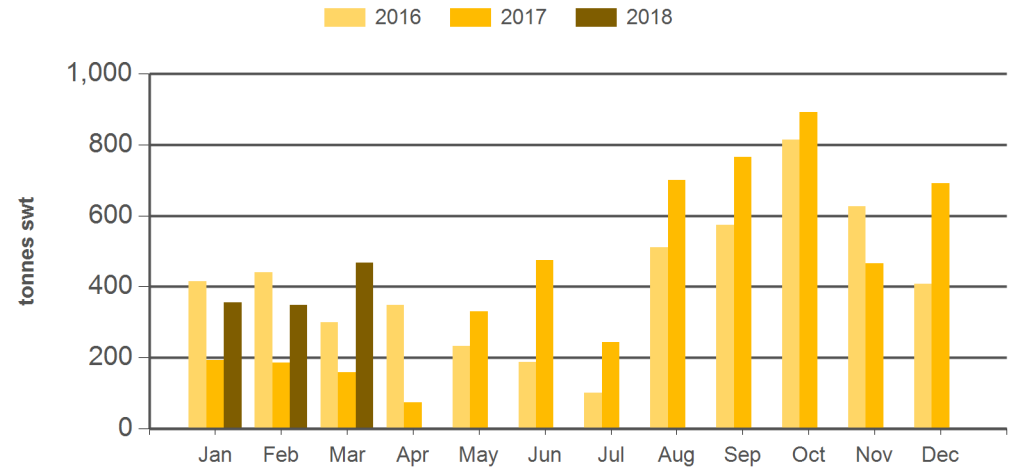
Source: DAWR, Prepared by MLA

**Monthly lamb exports to the EU**



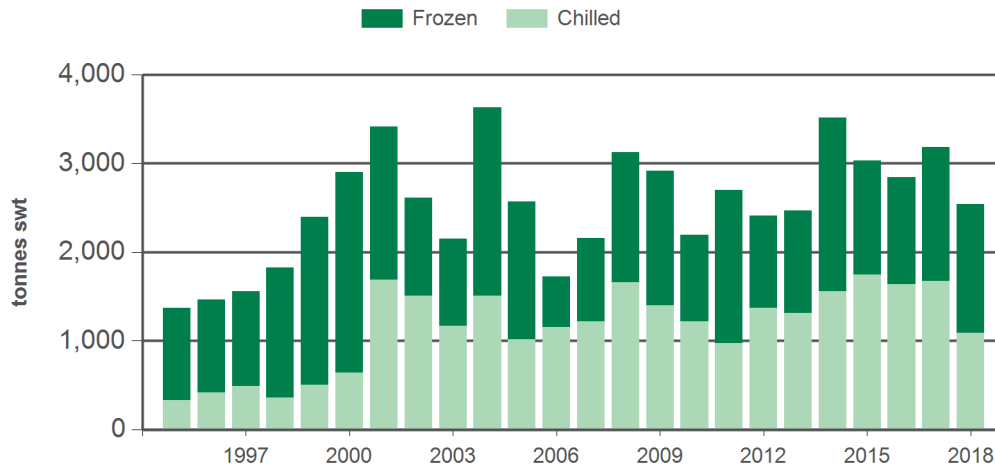
Source: DAWR, Prepared by MLA

**Monthly mutton exports to the EU**



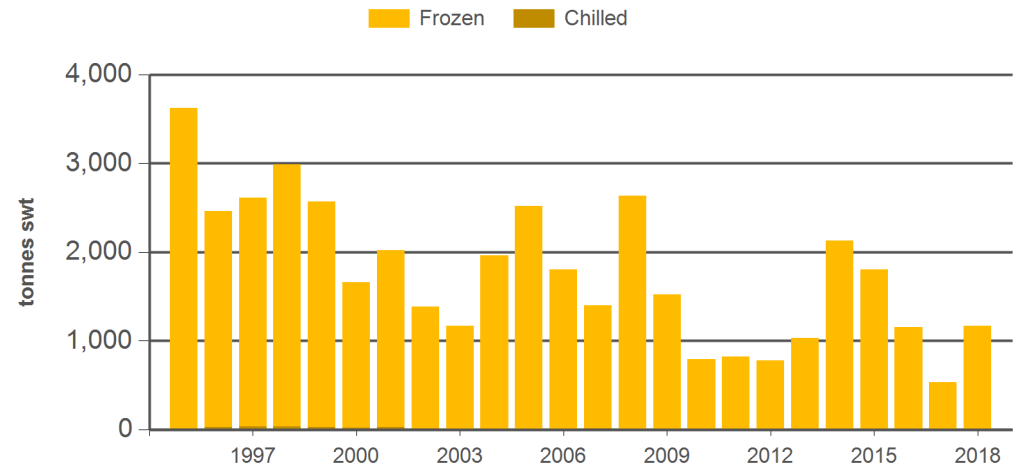
Source: DAWR, Prepared by MLA

**Year-to-March lamb exports to the EU**



Source: DAWR, Prepared by MLA

**Year-to-March mutton exports to the EU**



Source: DAWR, Prepared by MLA

#### Historical sheepmeat exports - Calendar year totals

Volume (tonnes swt)	2003	2004	2005	2006	2007	2008	2009	2010	2011	2012	2013	2014	2015	2016	2017	2018 YTD	Y-O-Y % chg.
Total	19,011	19,035	18,224	18,827	19,734	19,015	19,099	16,893	16,458	15,852	16,735	18,758	16,195	16,471	15,454	3,712	0
Lamb	14,748	12,210	10,592	11,808	12,734	11,581	13,730	11,951	12,930	12,129	11,747	14,042	10,656	11,512	10,281	2,541	-20
Mutton	4,262	6,825	7,632	7,020	7,000	7,434	5,370	4,941	3,528	3,723	4,988	4,716	5,539	4,959	5,174	1,171	118

Source: DAWR. YTD = Calendar year-to-March. SWT = Shipped weight. For further information email [marketinfo@mla.com.au](mailto:marketinfo@mla.com.au).

#### NEED MORE INFORMATION?



Click here for further prices and market information:  
<http://www.mla.com.au/prices-markets>



To download all historical data, click here to access MLA's statistics database:  
<http://statistics.mla.com.au>



Email [marketinfo@mla.com.au](mailto:marketinfo@mla.com.au) to subscribe to this or any other of MLA's market information reports