

European Union (UK inclusive)

12-months ending December

Volume (tonnes swt)	Chilled		Frozen		Total	
	12-months ending December	Y-O-Y % chg.	12-months ending December	Y-O-Y % chg.	12-months ending December	Y-O-Y % chg.
Total	3,371	-13	8,948	-22	12,319	-19
Lamb	3,371	-12	6,242	1	9,613	-4
Mutton	-	-100	2,706	-49	2,706	-49

Calendar year-to-December

Chilled		Frozen		Total	
2019 YTD	Y-O-Y % chg.	2019 YTD	Y-O-Y % chg.	2019 YTD	Y-O-Y % chg.
3,371	-13	8,948	-22	12,319	-19
3,371	-12	6,242	1	9,613	-4
-	-	2,706	-49	2,706	-49

Month of December

Chilled			Frozen			Total		
2019 December	M-O-M % chg.	Y-O-Y % chg.	2019 December	M-O-M % chg.	Y-O-Y % chg.	2019 December	M-O-M % chg.	Y-O-Y % chg.
210	-45	10	1,198	25	-15	1,409	5	-12
210	-45	10	808	2	13	1,019	-14	12
-	-	-	390	135	-44	390	135	-44

United Kingdom

12-months ending December

Volume (tonnes swt)	Chilled		Frozen		Total	
	12-months ending December	Y-O-Y % chg.	12-months ending December	Y-O-Y % chg.	12-months ending December	Y-O-Y % chg.
Total	1,363	-14	6,425	-21	7,788	-20
Lamb	1,363	-14	4,253	4	5,616	-1
Mutton	-	-	2,172	-46	2,172	-46

Calendar year-to-December

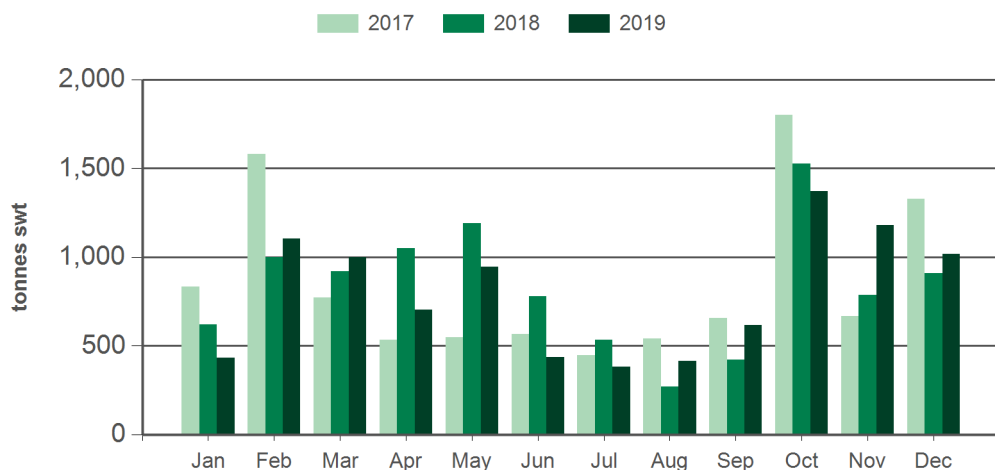
Chilled		Frozen		Total	
2019 YTD	Y-O-Y % chg.	2019 YTD	Y-O-Y % chg.	2019 YTD	Y-O-Y % chg.
1,363	-14	6,425	-21	7,788	-20
1,363	-14	4,253	4	5,616	-1
-	-	2,172	-46	2,172	-46

Month of December

Chilled			Frozen			Total		
2019 December	M-O-M % chg.	Y-O-Y % chg.	2019 December	M-O-M % chg.	Y-O-Y % chg.	2019 December	M-O-M % chg.	Y-O-Y % chg.
168	142	38	1,021	99	-4	1,190	104	1
168	142	38	639	34	20	808	47	23
-	-	-	382	963	-27	382	963	-27

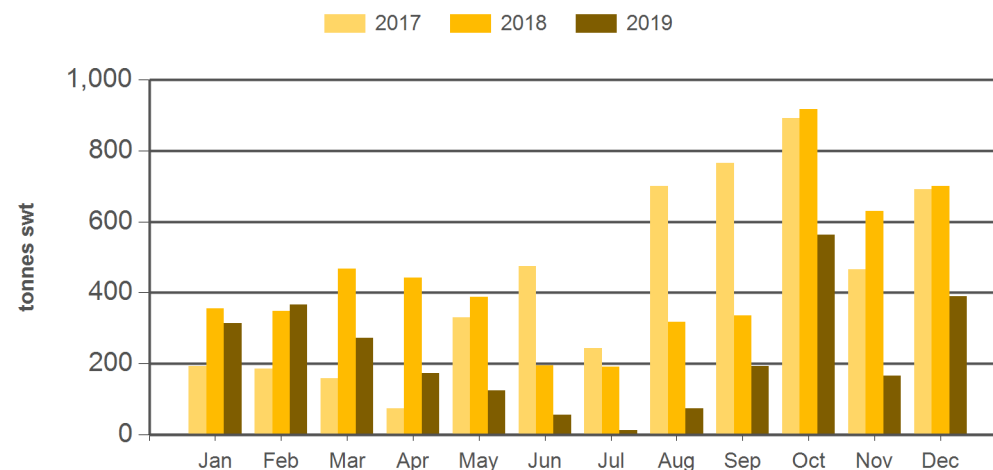
Source: DAWR. YTD = Calendar year-to-December. Y-O-Y = Year-on-year. M-O-M = Month-on-month. SWT = Shipped weight. For further information email globalindustryinsights@mla.com.au.

Monthly lamb exports to the EU



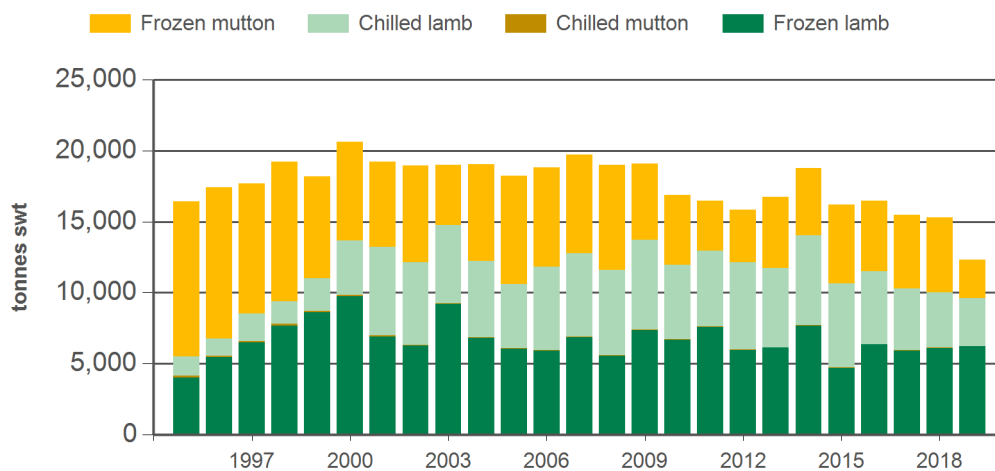
Source: DAWR, Prepared by MLA

Monthly mutton exports to the EU



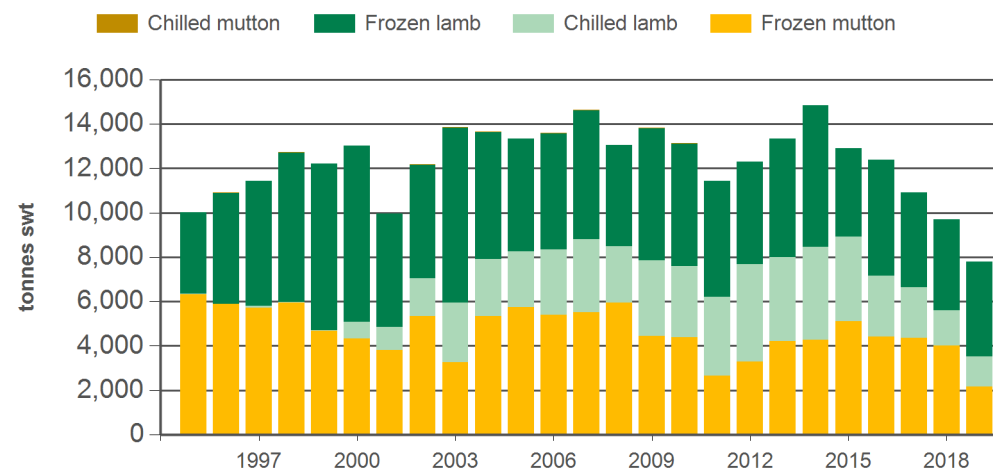
Source: DAWR, Prepared by MLA

Year-to-December sheepmeat exports to the EU



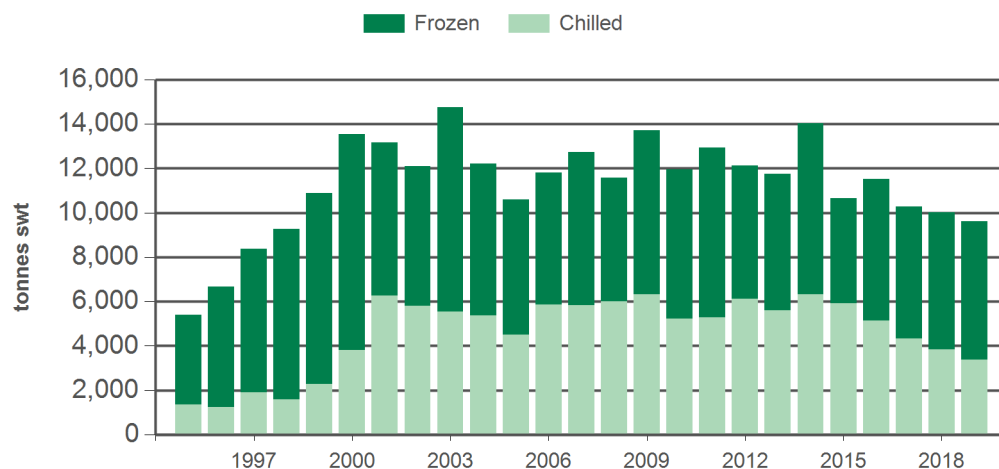
Source: DAWR, Prepared by MLA

Year-to-December sheepmeat exports to the UK



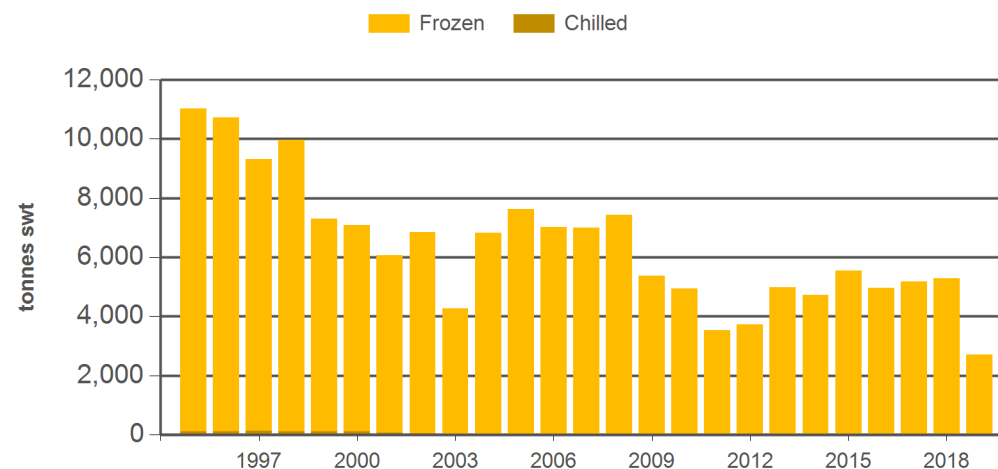
Source: DAWR, Prepared by MLA

Year-to-December lamb exports to the EU



Source: DAWR, Prepared by MLA

Year-to-December mutton exports to the EU



Source: DAWR, Prepared by MLA

Historical sheepmeat exports to the European Union (UK inclusive) - Calendar year totals

Volume (tonnes swt)	2004	2005	2006	2007	2008	2009	2010	2011	2012	2013	2014	2015	2016	2017	2018	2019 YTD	Y-O-Y % chg.
Total	19,035	18,224	18,827	19,734	19,015	19,099	16,893	16,458	15,852	16,735	18,758	16,195	16,471	15,454	15,295	12,319	-19
Lamb	12,210	10,592	11,808	12,734	11,581	13,730	11,951	12,930	12,129	11,747	14,042	10,656	11,512	10,281	10,008	9,613	-4
Mutton	6,825	7,632	7,020	7,000	7,434	5,370	4,941	3,528	3,723	4,988	4,716	5,539	4,959	5,174	5,288	2,706	-49

Historical sheepmeat exports to the United Kingdom - Calendar year totals

Volume (tonnes swt)	2004	2005	2006	2007	2008	2009	2010	2011	2012	2013	2014	2015	2016	2017	2018	2019 YTD	Y-O-Y % chg.
Total	13,663	13,341	13,604	14,643	13,058	13,826	13,151	11,426	12,296	13,354	14,832	12,921	12,378	10,927	9,698	7,788	-20
Lamb	8,309	7,601	8,185	9,105	7,104	9,384	8,754	8,780	9,016	9,124	10,561	7,806	7,950	6,567	5,691	5,616	-1
Mutton	5,354	5,740	5,418	5,539	5,954	4,442	4,397	2,646	3,279	4,230	4,271	5,115	4,428	4,360	4,006	2,172	-46

Source: DAWR. YTD = Calendar year-to-December. SWT = Shipped weight. For further information email globalindustryinsights@mla.com.au.