

European Union (EU-27)

12-months ending July

Volume (tonnes swt)	Chilled		Frozen		Total	
	12-months ending July	Y-O-Y % chg.	12-months ending July	Y-O-Y % chg.	12-months ending July	Y-O-Y % chg.
Total	1,524	-21	2,198	-13	3,722	-16
Lamb	1,524	-21	1,902	-18	3,426	-19
Mutton	-		296	63	296	63

Calendar year-to-July

Chilled		Frozen		Total	
2021 YTD	Y-O-Y % chg.	2021 YTD	Y-O-Y % chg.	2021 YTD	Y-O-Y % chg.
632	-16	675	-59	1,307	-45
632	-16	591	-63	1,223	-48
-	-	83	200	83	200

Month of July

Chilled			Frozen			Total		
2021 July	M-O-M % chg.	Y-O-Y % chg.	2021 July	M-O-M % chg.	Y-O-Y % chg.	2021 July	M-O-M % chg.	Y-O-Y % chg.
9	-48	-	139	23	-47	149	14	-45
9	-48	-	117	82	-53	127	53	-51
-	-	-	22	-54	70	22	-54	70

United Kingdom

12-months ending July

Volume (tonnes swt)	Chilled		Frozen		Total	
	12-months ending July	Y-O-Y % chg.	12-months ending July	Y-O-Y % chg.	12-months ending July	Y-O-Y % chg.
Total	2,037	19	7,177	1	9,215	4
Lamb	2,037	19	4,351	-1	6,388	5
Mutton	-		2,827	4	2,827	4

Calendar year-to-July

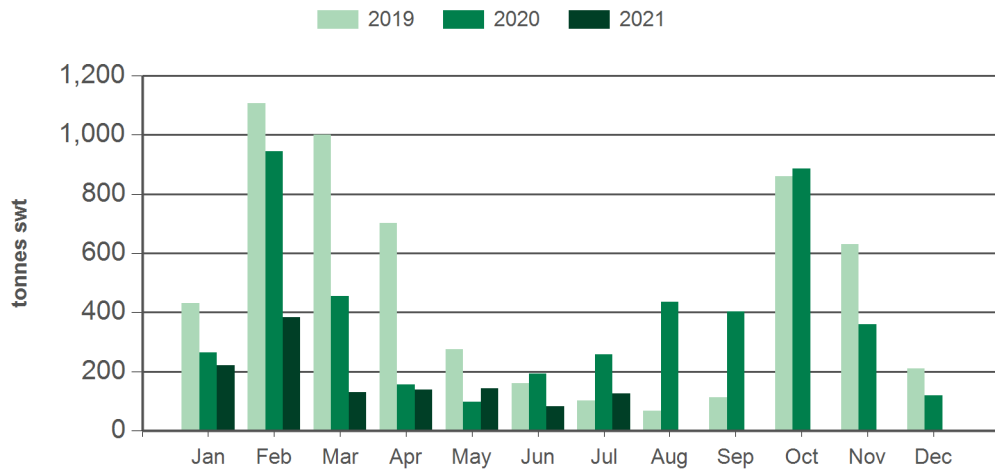
Chilled		Frozen		Total	
2021 YTD	Y-O-Y % chg.	2021 YTD	Y-O-Y % chg.	2021 YTD	Y-O-Y % chg.
1,107	-10	3,661	1	4,768	-2
1,107	-10	2,278	6	3,384	-
-	-	1,383	-7	1,383	-7

Month of July

Chilled			Frozen			Total		
2021 July	M-O-M % chg.	Y-O-Y % chg.	2021 July	M-O-M % chg.	Y-O-Y % chg.	2021 July	M-O-M % chg.	Y-O-Y % chg.
122	-11	-22	665	-16	53	787	-16	34
122	-11	-22	373	-32	53	495	-28	24
-	-	-	292	18	54	292	18	54

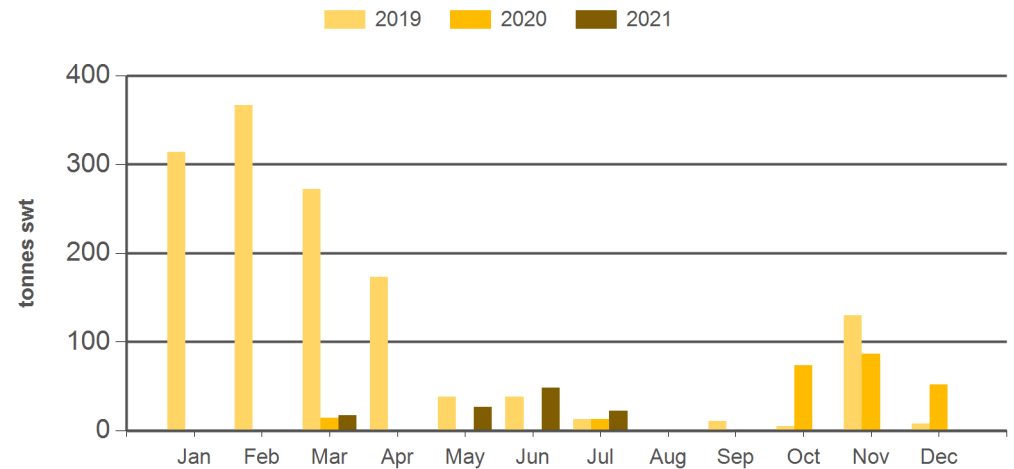
Source: DAWR. YTD = Calendar year-to-July. Y-O-Y = Year-on-year. M-O-M = Month-on-month. SWT = Shipped weight. For further information email globalindustryinsights@mla.com.au.

Monthly lamb exports to the EU



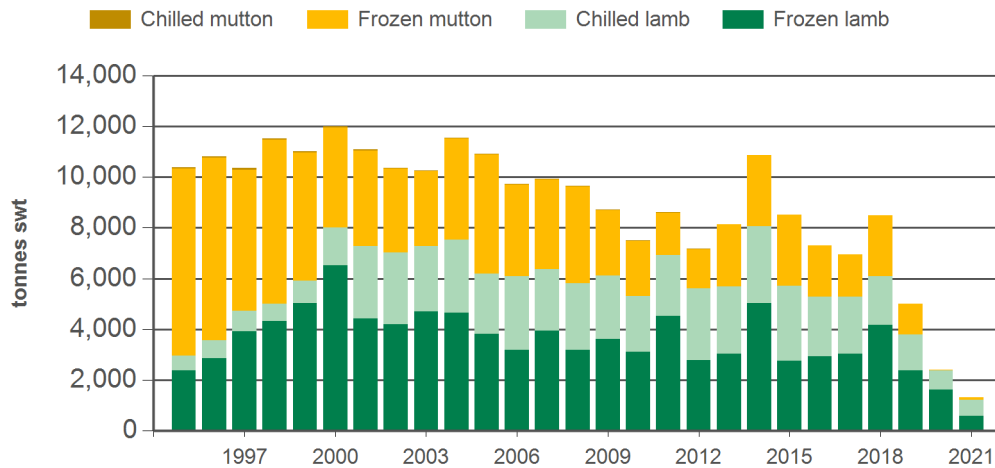
Source: DAWR, Prepared by MLA

Monthly mutton exports to the EU



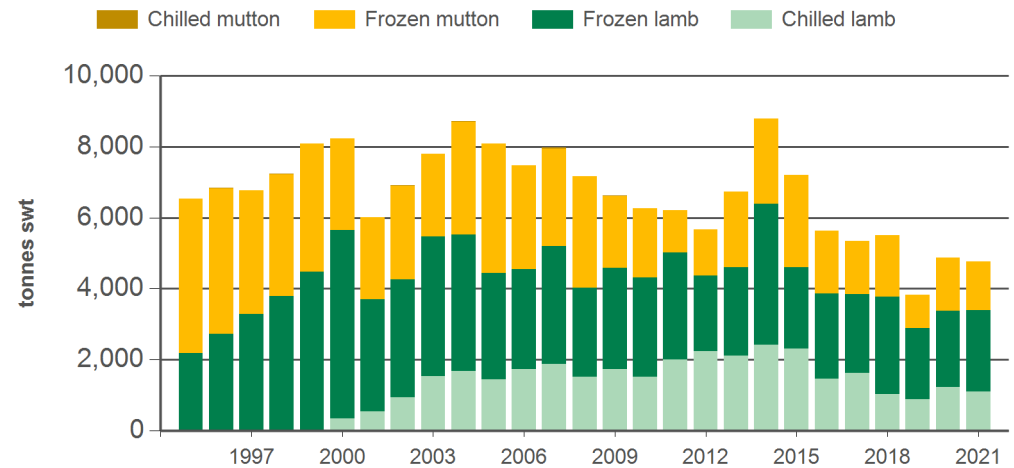
Source: DAWR, Prepared by MLA

Year-to-July sheepmeat exports to the EU



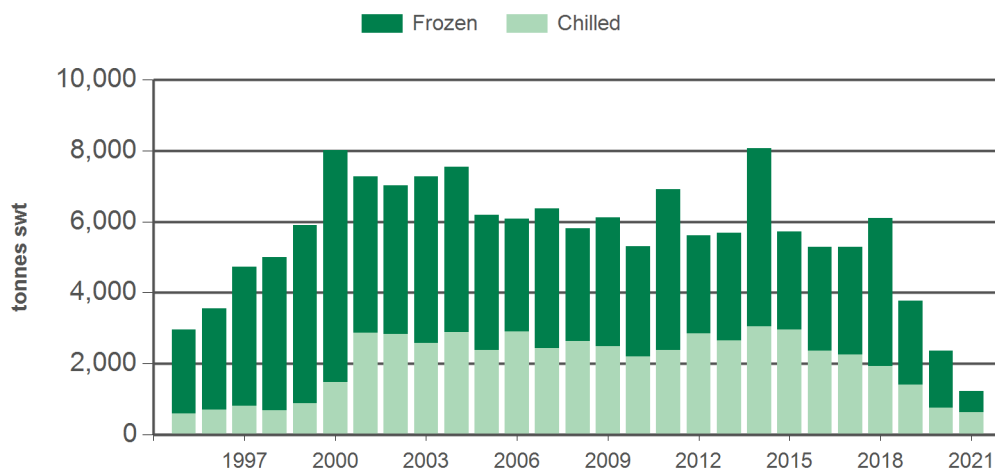
Source: DAWR, Prepared by MLA

Year-to-July sheepmeat exports to the UK



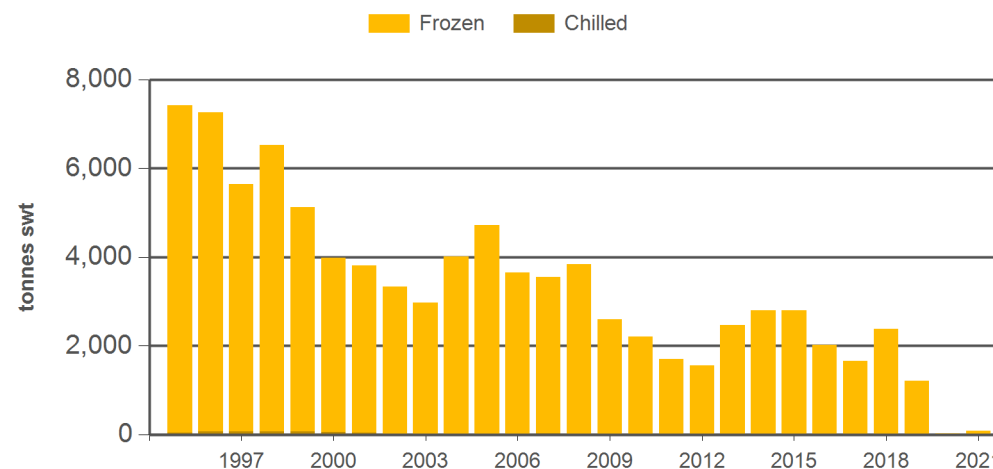
Source: DAWR, Prepared by MLA

Year-to-July lamb exports to the EU



Source: DAWR, Prepared by MLA

Year-to-July mutton exports to the EU



Source: DAWR, Prepared by MLA

Historical sheepmeat exports to the European Union (EU-27) - Calendar year totals

Volume (tonnes swt)	2006	2007	2008	2009	2010	2011	2012	2013	2014	2015	2016	2017	2018	2019	2020	2021 YTD	Y-O-Y % chg.
Total	18,827	19,734	19,015	19,099	16,893	16,458	15,852	16,735	18,758	16,195	16,471	15,454	15,295	7,028	4,813	1,307	-45
Lamb	11,808	12,734	11,581	13,730	11,951	12,930	12,129	11,747	14,042	10,656	11,512	10,281	10,008	5,658	4,573	1,223	-48
Mutton	7,020	7,000	7,434	5,370	4,941	3,528	3,723	4,988	4,716	5,539	4,959	5,174	5,288	1,369	240	83	200

Historical sheepmeat exports to the United Kingdom - Calendar year totals

Volume (tonnes swt)	2006	2007	2008	2009	2010	2011	2012	2013	2014	2015	2016	2017	2018	2019	2020	2021 YTD	Y-O-Y % chg.
Total	13,604	14,643	13,058	13,826	13,151	11,426	12,296	13,354	14,832	12,921	12,378	10,927	9,698	7,788	9,313	4,768	-2
Lamb	8,185	9,105	7,104	9,384	8,754	8,780	9,016	9,124	10,561	7,806	7,950	6,567	5,691	5,616	6,388	3,384	0
Mutton	5,418	5,539	5,954	4,442	4,397	2,646	3,279	4,230	4,271	5,115	4,428	4,360	4,006	2,172	2,925	1,383	-7

Source: DAWR. YTD = Calendar year-to-July. SWT = Shipped weight. For further information email globalindustryinsights@mla.com.au.