

#### European Union (UK inclusive)

##### 12-months ending March

Volume (tonnes swt)	Chilled		Frozen		Total	
	12-months ending March	Y-O-Y % chg.	12-months ending March	Y-O-Y % chg.	12-months ending March	Y-O-Y % chg.
Total	3,874	3	11,200	-4	15,074	-2
Lamb	3,873	3	6,132	4	10,005	4
Mutton	1	548	5,068	-13	5,069	-13

##### Calendar year-to-March

Chilled		Frozen		Total	
2019 YTD	Y-O-Y % chg.	2019 YTD	Y-O-Y % chg.	2019 YTD	Y-O-Y % chg.
1,109	2	2,382	-9	3,492	-6
1,109	2	1,430	-2	2,539	-
-	-	953	-19	953	-19

##### Month of March

Chilled			Frozen			Total		
2019 March	M-O-M % chg.	Y-O-Y % chg.	2019 March	M-O-M % chg.	Y-O-Y % chg.	2019 March	M-O-M % chg.	Y-O-Y % chg.
396	-34	53	877	-	-22	1,273	-14	-8
396	-34	53	605	19	-8	1,001	-10	9
-	-	-	272	-26	-42	272	-26	-42

#### United Kingdom

##### 12-months ending March

Volume (tonnes swt)	Chilled		Frozen		Total	
	12-months ending March	Y-O-Y % chg.	12-months ending March	Y-O-Y % chg.	12-months ending March	Y-O-Y % chg.
Total	1,590	4	7,878	-10	9,468	-8
Lamb	1,590	4	3,991	-	5,581	1
Mutton	-	-	3,887	-18	3,887	-18

##### Calendar year-to-March

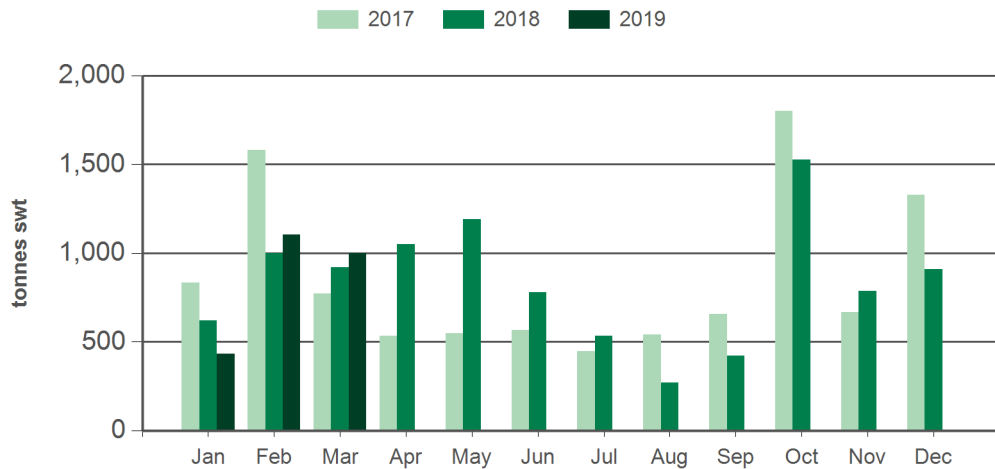
Chilled		Frozen		Total	
2019 YTD	Y-O-Y % chg.	2019 YTD	Y-O-Y % chg.	2019 YTD	Y-O-Y % chg.
402	1	1,502	-13	1,905	-11
402	1	795	-12	1,197	-8
-	-	707	-14	707	-14

##### Month of March

Chilled			Frozen			Total		
2019 March	M-O-M % chg.	Y-O-Y % chg.	2019 March	M-O-M % chg.	Y-O-Y % chg.	2019 March	M-O-M % chg.	Y-O-Y % chg.
170	20	13	581	15	-23	751	16	-17
170	20	13	370	41	-20	540	34	-12
-	-	-	211	-14	-27	211	-14	-27

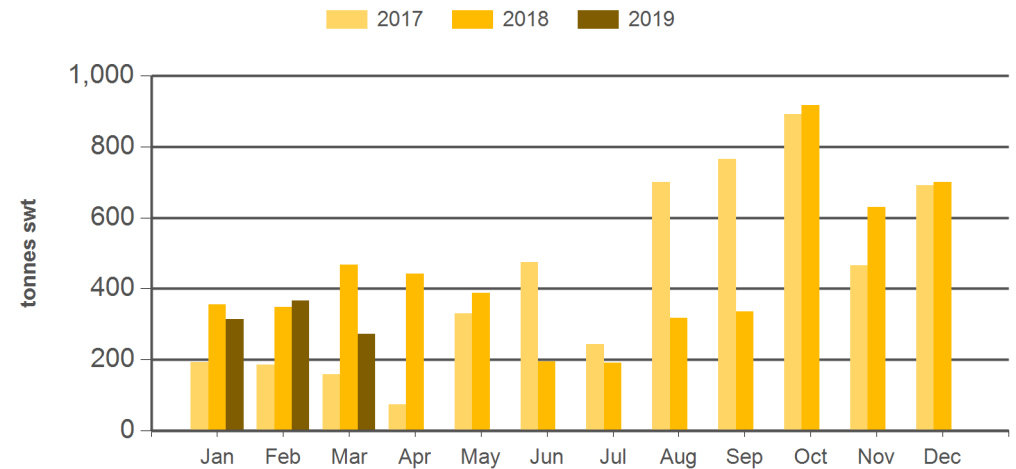
Source: DAWR. YTD = Calendar year-to-March. Y-O-Y = Year-on-year. M-O-M = Month-on-month. SWT = Shipped weight. For further information email [marketinfo@mla.com.au](mailto:marketinfo@mla.com.au).

#### Monthly lamb exports to the EU



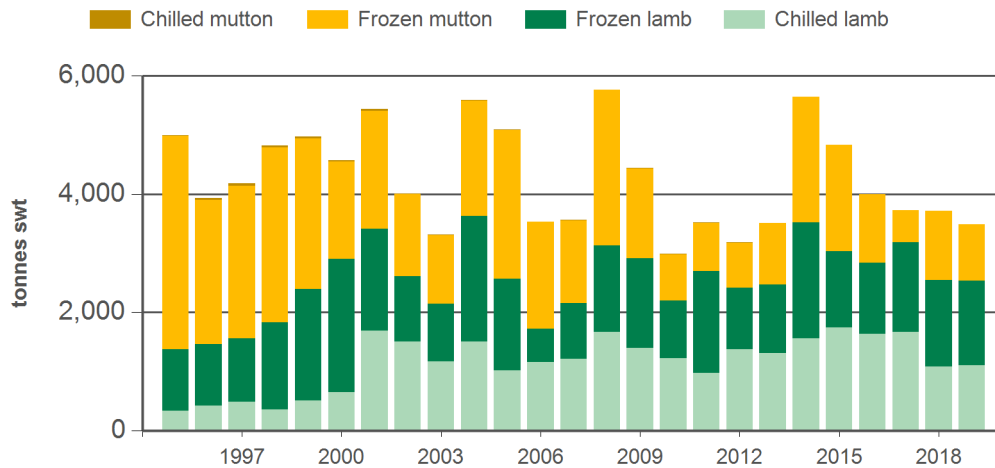
Source: DAWR, Prepared by MLA

#### Monthly mutton exports to the EU



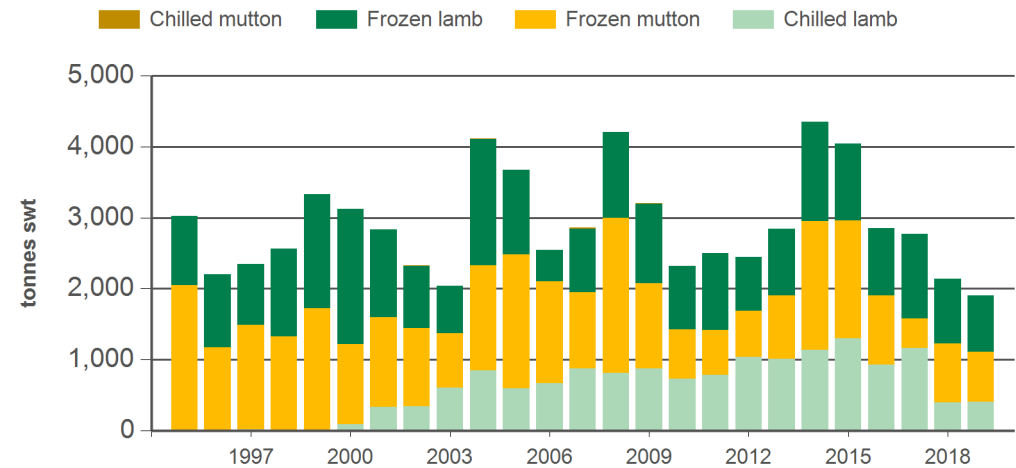
Source: DAWR, Prepared by MLA

#### Year-to-March sheepmeat exports to the EU



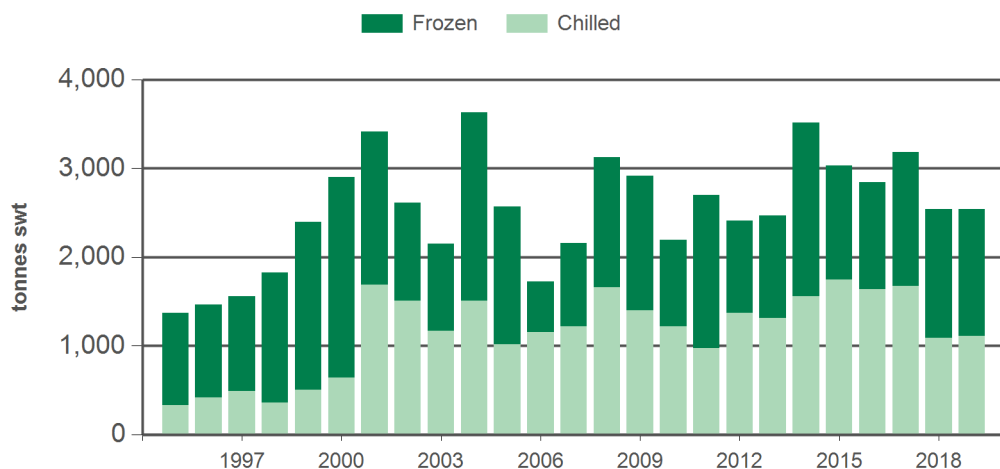
Source: DAWR, Prepared by MLA

#### Year-to-March sheepmeat exports to the UK



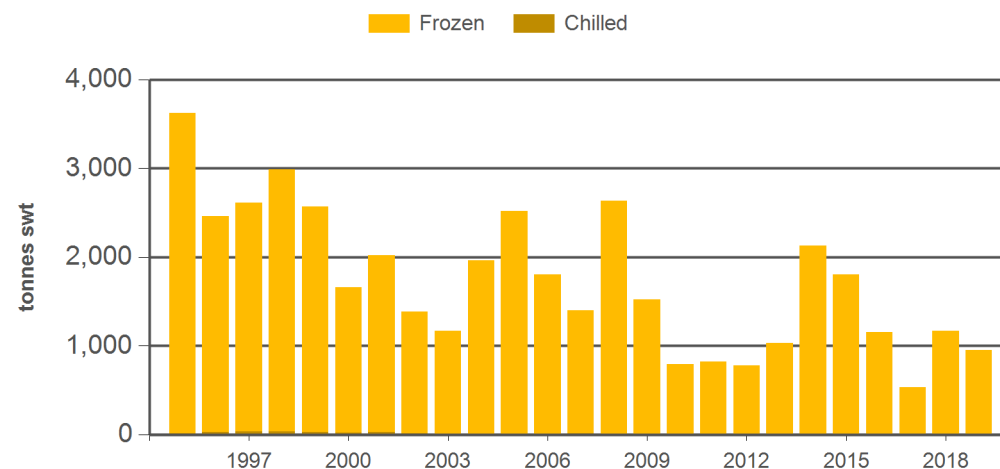
Source: DAWR, Prepared by MLA

#### Year-to-March lamb exports to the EU



Source: DAWR, Prepared by MLA

#### Year-to-March mutton exports to the EU



Source: DAWR, Prepared by MLA

#### Historical sheepmeat exports to the European Union (UK inclusive) - Calendar year totals

Volume (tonnes swt)	2004	2005	2006	2007	2008	2009	2010	2011	2012	2013	2014	2015	2016	2017	2018	2019 YTD	Y-O-Y % chg.
Total	19,035	18,224	18,827	19,734	19,015	19,099	16,893	16,458	15,852	16,735	18,758	16,195	16,471	15,454	15,295	3,492	-6
Lamb	12,210	10,592	11,808	12,734	11,581	13,730	11,951	12,930	12,129	11,747	14,042	10,656	11,512	10,281	10,008	2,539	0
Mutton	6,825	7,632	7,020	7,000	7,434	5,370	4,941	3,528	3,723	4,988	4,716	5,539	4,959	5,174	5,288	953	-19

#### Historical sheepmeat exports to the United Kingdom - Calendar year totals

Volume (tonnes swt)	2004	2005	2006	2007	2008	2009	2010	2011	2012	2013	2014	2015	2016	2017	2018	2019 YTD	Y-O-Y % chg.
Total	13,663	13,341	13,604	14,643	13,058	13,826	13,151	11,426	12,296	13,354	14,832	12,921	12,378	10,927	9,698	1,905	-11
Lamb	8,309	7,601	8,185	9,105	7,104	9,384	8,754	8,780	9,016	9,124	10,561	7,806	7,950	6,567	5,691	1,197	-8
Mutton	5,354	5,740	5,418	5,539	5,954	4,442	4,397	2,646	3,279	4,230	4,271	5,115	4,428	4,360	4,006	707	-14

Source: DAWR. YTD = Calendar year-to-March. SWT = Shipped weight. For further information email [marketinfo@mla.com.au](mailto:marketinfo@mla.com.au).