

#### European Union (EU-27)

##### 12-months ending November

Volume (tonnes swt)	Chilled		Frozen		Total	
	12-months ending November	Y-O-Y % chg.	12-months ending November	Y-O-Y % chg.	12-months ending November	Y-O-Y % chg.
Total	1,147	-31	1,557	-51	2,704	-44
Lamb	1,147	-31	1,205	-60	2,352	-50
Mutton	-		352	80	352	80

##### Calendar year-to-November

Chilled		Frozen		Total	
2021 YTD	Y-O-Y % chg.	2021 YTD	Y-O-Y % chg.	2021 YTD	Y-O-Y % chg.
1,111	-31	1,421	-53	2,532	-45
1,111	-31	1,121	-61	2,232	-50
-	-	300	60	300	60

##### Month of November

Chilled			Frozen			Total		
2021 November	M-O-M % chg.	Y-O-Y % chg.	2021 November	M-O-M % chg.	Y-O-Y % chg.	2021 November	M-O-M % chg.	Y-O-Y % chg.
67	-80	-63	56	-76	-79	123	-78	-73
67	-80	-63	28	-79	-84	95	-80	-74
-	-	-	28	-70	-68	28	-70	-68

#### United Kingdom

##### 12-months ending November

Volume (tonnes swt)	Chilled		Frozen		Total	
	12-months ending November	Y-O-Y % chg.	12-months ending November	Y-O-Y % chg.	12-months ending November	Y-O-Y % chg.
Total	1,883	-13	7,926	10	9,809	5
Lamb	1,883	-13	4,692	10	6,575	2
Mutton	-		3,234	10	3,234	10

##### Calendar year-to-November

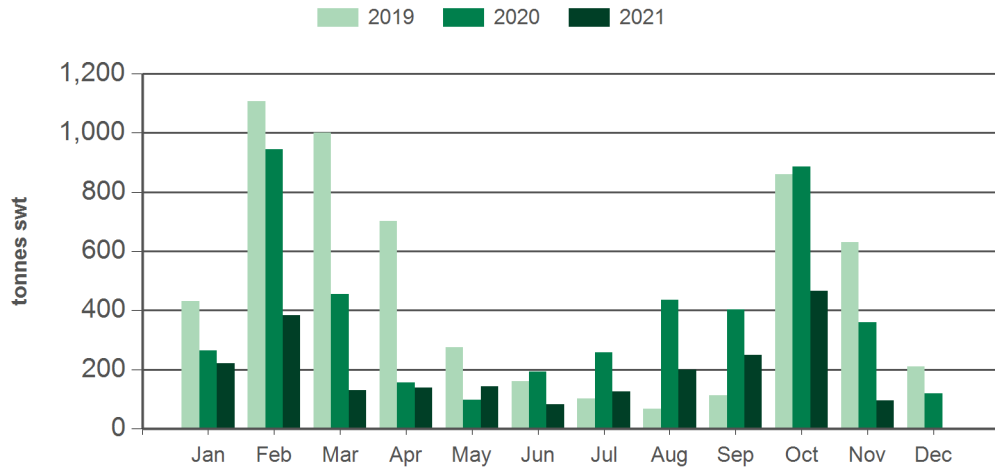
Chilled		Frozen		Total	
2021 YTD	Y-O-Y % chg.	2021 YTD	Y-O-Y % chg.	2021 YTD	Y-O-Y % chg.
1,714	-14	6,964	12	8,677	6
1,714	-14	4,086	13	5,800	3
-	-	2,877	12	2,877	12

##### Month of November

Chilled			Frozen			Total		
2021 November	M-O-M % chg.	Y-O-Y % chg.	2021 November	M-O-M % chg.	Y-O-Y % chg.	2021 November	M-O-M % chg.	Y-O-Y % chg.
89	-59	-57	518	-61	-27	607	-60	-34
89	-59	-57	295	-56	-32	384	-57	-40
-	-	-	223	-65	-19	223	-65	-19

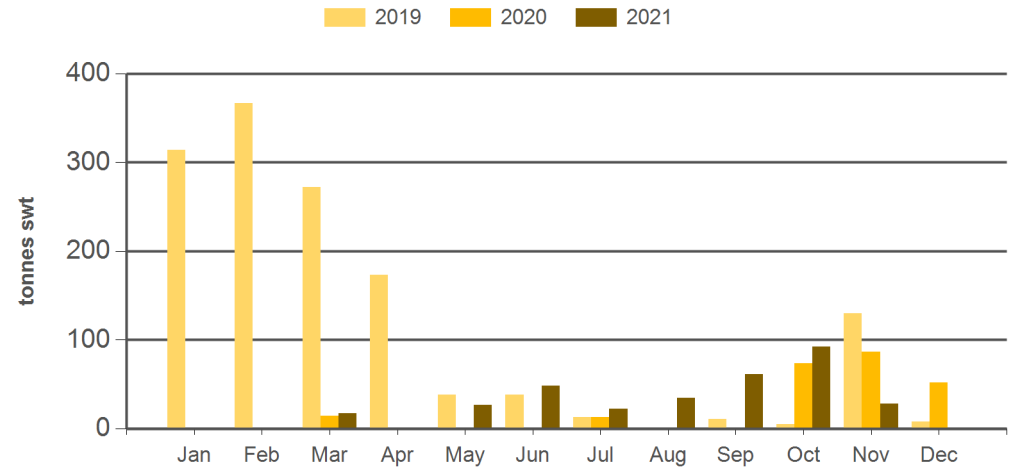
Source: DAWR. YTD = Calendar year-to-November. Y-O-Y = Year-on-year. M-O-M = Month-on-month. SWT = Shipped weight. For further information email [globalindustryinsights@mla.com.au](mailto:globalindustryinsights@mla.com.au).

**Monthly lamb exports to the EU**



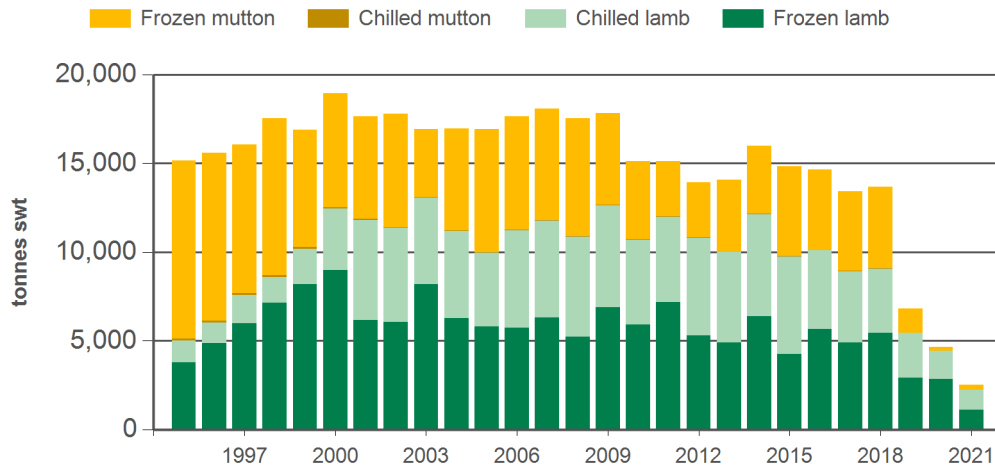
Source: DAWR, Prepared by MLA

**Monthly mutton exports to the EU**



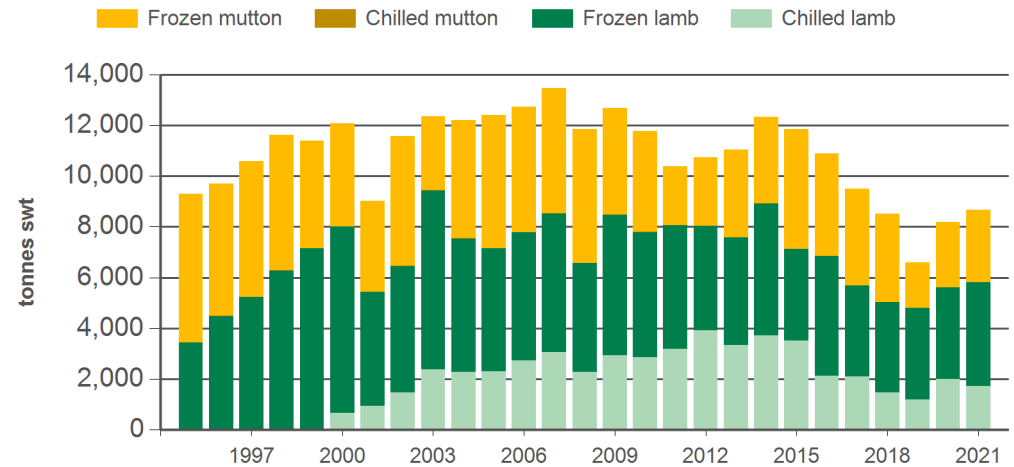
Source: DAWR, Prepared by MLA

**Year-to-November sheepmeat exports to the EU**



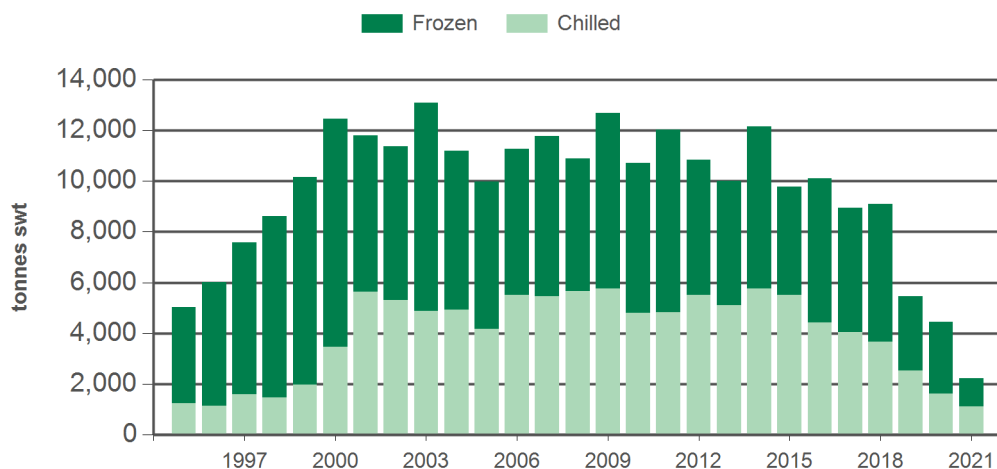
Source: DAWR, Prepared by MLA

**Year-to-November sheepmeat exports to the UK**



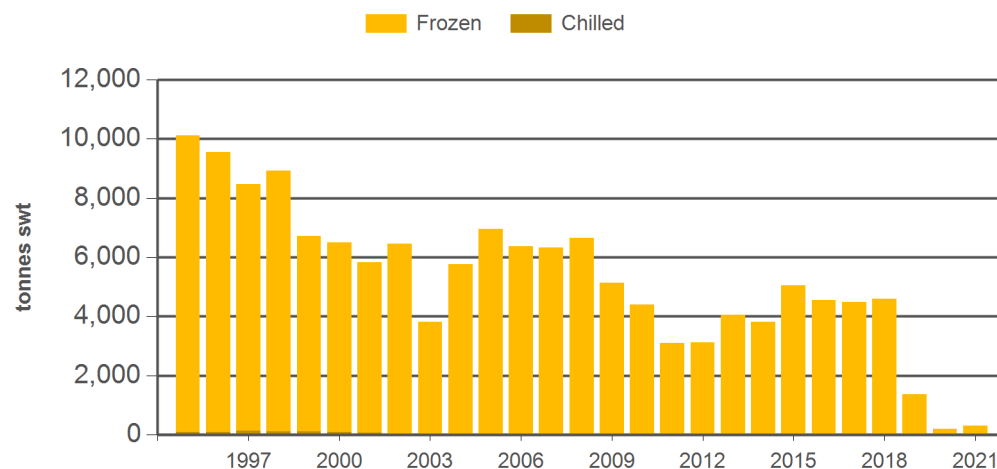
Source: DAWR, Prepared by MLA

#### Year-to-November lamb exports to the EU



Source: DAWR, Prepared by MLA

#### Year-to-November mutton exports to the EU



Source: DAWR, Prepared by MLA

#### Historical sheepmeat exports to the European Union (EU-27) - Calendar year totals

Volume (tonnes swt)	2006	2007	2008	2009	2010	2011	2012	2013	2014	2015	2016	2017	2018	2019	2020	2021 YTD	Y-O-Y % chg.
Total	18,827	19,734	19,015	19,099	16,893	16,458	15,852	16,735	18,758	16,195	16,471	15,454	15,295	7,028	4,813	2,532	-45
Lamb	11,808	12,734	11,581	13,730	11,951	12,930	12,129	11,747	14,042	10,656	11,512	10,281	10,008	5,658	4,573	2,232	-50
Mutton	7,020	7,000	7,434	5,370	4,941	3,528	3,723	4,988	4,716	5,539	4,959	5,174	5,288	1,369	240	300	60

#### Historical sheepmeat exports to the United Kingdom - Calendar year totals

Volume (tonnes swt)	2006	2007	2008	2009	2010	2011	2012	2013	2014	2015	2016	2017	2018	2019	2020	2021 YTD	Y-O-Y % chg.
Total	13,604	14,643	13,058	13,826	13,151	11,426	12,296	13,354	14,832	12,921	12,378	10,927	9,698	7,788	9,313	8,677	6
Lamb	8,185	9,105	7,104	9,384	8,754	8,780	9,016	9,124	10,561	7,806	7,950	6,567	5,691	5,616	6,388	5,800	3
Mutton	5,418	5,539	5,954	4,442	4,397	2,646	3,279	4,230	4,271	5,115	4,428	4,360	4,006	2,172	2,925	2,877	12

Source: DAWR. YTD = Calendar year-to-November. SWT = Shipped weight. For further information email [globalindustryinsights@mla.com.au](mailto:globalindustryinsights@mla.com.au).