

#### European Union (UK inclusive)

##### 12-months ending August

Volume (tonnes swt)	Chilled		Frozen		Total	
	12-months ending August	Y-O-Y % chg.	12-months ending August	Y-O-Y % chg.	12-months ending August	Y-O-Y % chg.
Total	3,564	-11	9,479	-23	13,043	-20
Lamb	3,563	-11	5,505	-19	9,068	-16
Mutton	1		3,974	-28	3,976	-28

##### Calendar year-to-August

Chilled		Frozen		Total	
2019 YTD	Y-O-Y % chg.	2019 YTD	Y-O-Y % chg.	2019 YTD	Y-O-Y % chg.
1,805	-14	5,012	-28	6,817	-25
1,805	-14	3,619	-15	5,424	-15
-	-	1,393	-49	1,393	-49

##### Month of August

Chilled			Frozen			Total		
2019 August	M-O-M % chg.	Y-O-Y % chg.	2019 August	M-O-M % chg.	Y-O-Y % chg.	2019 August	M-O-M % chg.	Y-O-Y % chg.
81	10	-50	407	26	-4	489	23	-17
81	10	-50	333	7	210	414	8	54
-	-	-	74	484	-77	74	484	-77

#### United Kingdom

##### 12-months ending August

Volume (tonnes swt)	Chilled		Frozen		Total	
	12-months ending August	Y-O-Y % chg.	12-months ending August	Y-O-Y % chg.	12-months ending August	Y-O-Y % chg.
Total	1,409	-16	6,666	-24	8,075	-22
Lamb	1,409	-16	3,601	-21	5,010	-20
Mutton	-		3,065	-27	3,065	-27

##### Calendar year-to-August

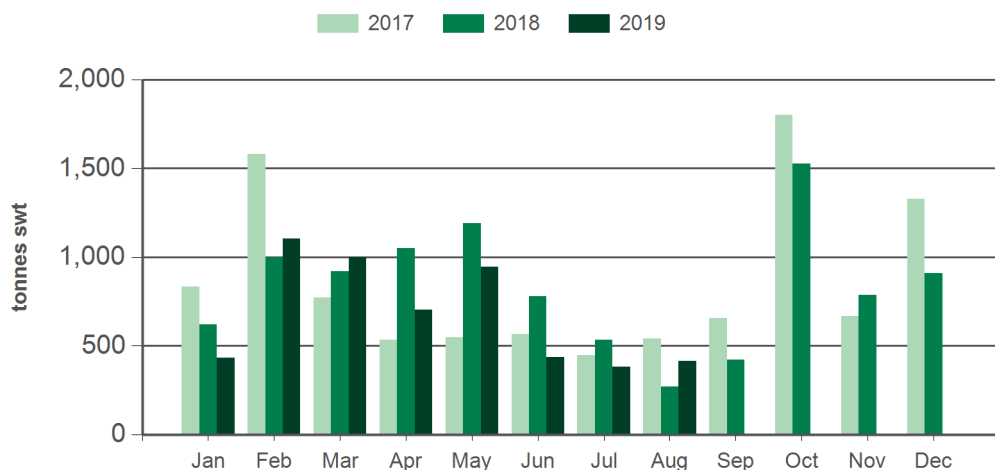
Chilled		Frozen		Total	
2019 YTD	Y-O-Y % chg.	2019 YTD	Y-O-Y % chg.	2019 YTD	Y-O-Y % chg.
942	-16	3,312	-30	4,254	-28
942	-16	2,299	-18	3,241	-17
-	-	1,013	-48	1,013	-48

##### Month of August

Chilled			Frozen			Total		
2019 August	M-O-M % chg.	Y-O-Y % chg.	2019 August	M-O-M % chg.	Y-O-Y % chg.	2019 August	M-O-M % chg.	Y-O-Y % chg.
63	-7	-29	359	68	23	422	50	11
63	-7	-29	285	33	332	348	23	123
-	-	-	74	-	-67	74	-	-67

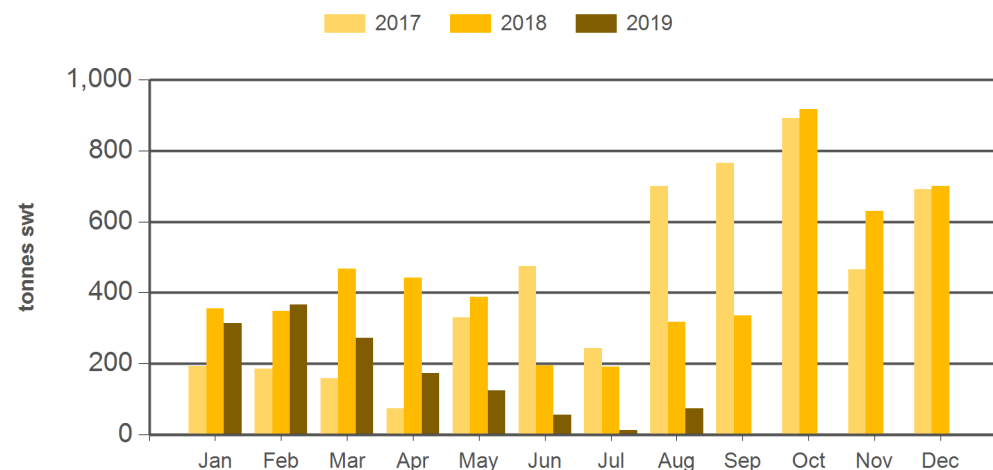
Source: DAWR. YTD = Calendar year-to-August. Y-O-Y = Year-on-year. M-O-M = Month-on-month. SWT = Shipped weight. For further information email [globalindustryinsights@mla.com.au](mailto:globalindustryinsights@mla.com.au).

#### Monthly lamb exports to the EU



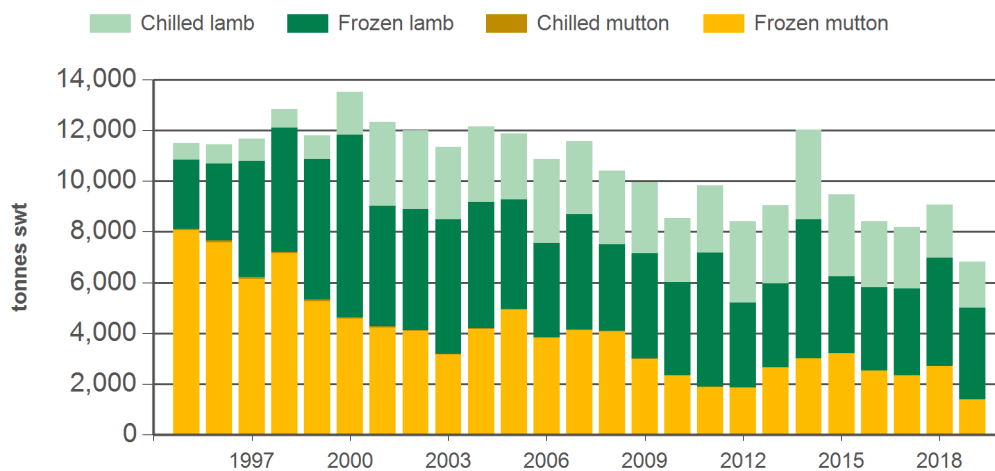
Source: DAWR, Prepared by MLA

#### Monthly mutton exports to the EU



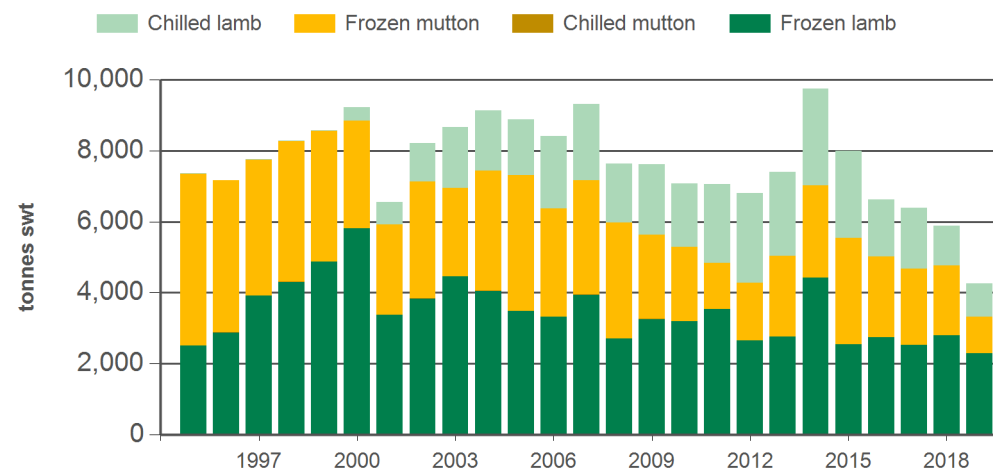
Source: DAWR, Prepared by MLA

#### Year-to-August sheepmeat exports to the EU



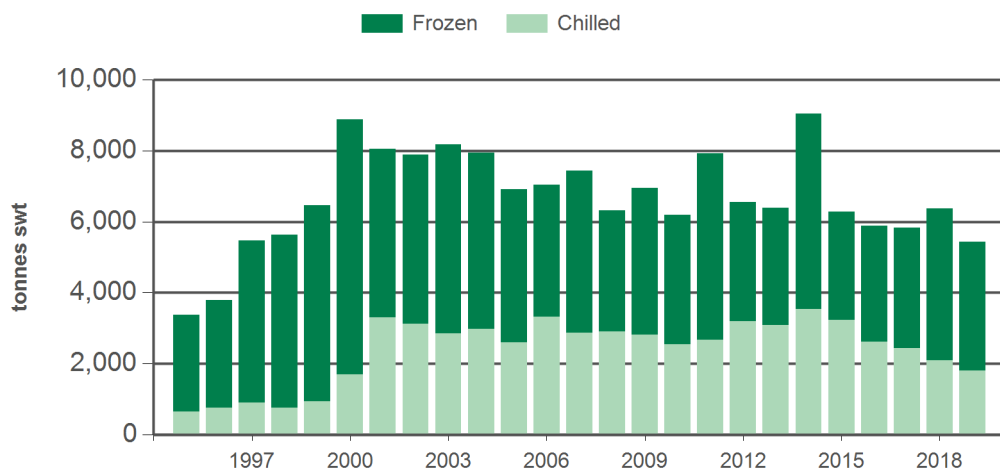
Source: DAWR, Prepared by MLA

#### Year-to-August sheepmeat exports to the UK



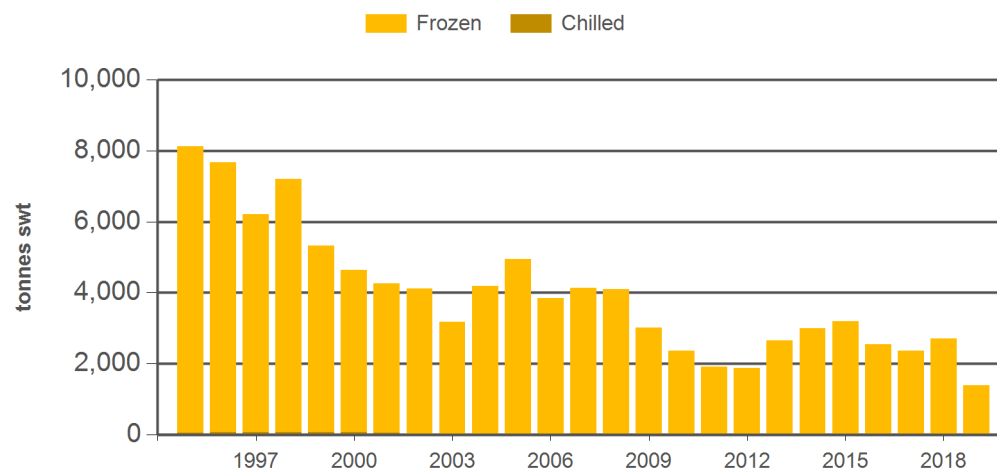
Source: DAWR, Prepared by MLA

#### Year-to-August lamb exports to the EU



Source: DAWR, Prepared by MLA

#### Year-to-August mutton exports to the EU



Source: DAWR, Prepared by MLA

#### Historical sheepmeat exports to the European Union (UK inclusive) - Calendar year totals

Volume (tonnes swt)	2004	2005	2006	2007	2008	2009	2010	2011	2012	2013	2014	2015	2016	2017	2018	2019 YTD	Y-O-Y % chg.
Total	19,035	18,224	18,827	19,734	19,015	19,099	16,893	16,458	15,852	16,735	18,758	16,195	16,471	15,454	15,295	6,817	-25
Lamb	12,210	10,592	11,808	12,734	11,581	13,730	11,951	12,930	12,129	11,747	14,042	10,656	11,512	10,281	10,008	5,424	-15
Mutton	6,825	7,632	7,020	7,000	7,434	5,370	4,941	3,528	3,723	4,988	4,716	5,539	4,959	5,174	5,288	1,393	-49

#### Historical sheepmeat exports to the United Kingdom - Calendar year totals

Volume (tonnes swt)	2004	2005	2006	2007	2008	2009	2010	2011	2012	2013	2014	2015	2016	2017	2018	2019 YTD	Y-O-Y % chg.
Total	13,663	13,341	13,604	14,643	13,058	13,826	13,151	11,426	12,296	13,354	14,832	12,921	12,378	10,927	9,698	4,254	-28
Lamb	8,309	7,601	8,185	9,105	7,104	9,384	8,754	8,780	9,016	9,124	10,561	7,806	7,950	6,567	5,691	3,241	-17
Mutton	5,354	5,740	5,418	5,539	5,954	4,442	4,397	2,646	3,279	4,230	4,271	5,115	4,428	4,360	4,006	1,013	-48

Source: DAWR. YTD = Calendar year-to-August. SWT = Shipped weight. For further information email [globalindustryinsights@mla.com.au](mailto:globalindustryinsights@mla.com.au).