

Monthly US Lamb Market Update

October 2022 Issue

Prepared Exclusively for Meat & Livestock Australia - Sydney

November 1, 2022

USA Domestic Lamb Market - Supply/Demand Situation

Production update: September lamb production was pegged at 21.144 million pounds, on a live basis, down 0.8% from the previous year. Lamb production has been at or above year ago levels even as slaughter this year has been consistently below last year. The two are related, of course. High lamb prices earlier in the year encouraged producers to try to put more pounds on before they sent lambs to market. This was done by putting more lambs into feedlots (see next point) and also delaying marketings. Lamb and sheep slaughter in September was estimated at 168.8 million head, down 8.5% lower than the previous year. However, the average live weight of animals coming to market was 125 pounds (56.7 kg), 7.9% higher than the previous year. USDA estimates that the dressed weight of lambs and sheep for the month was 65 pounds (a 52% dressed yield), 8.3% higher than a year ago and 1.6% higher than the five year average. There's an argument to be made that the increase in average weights reflects a more normal marketing pace than the last couple of years. The average dressed weight for lambs and sheep slaughtered in September 2017 was 66 pounds and in 2018 it was 69 pounds. It has been only in the last couple of years that average weights have declined as much. This also has to do with the mix of livestock coming to market, if there are more yearling lambs, feedlot lambs and sheep in the mix.

Feedlot trends: Through the first half of the year we noted a significant increase in the number of lambs on feed in Colorado feedlots. This data is reported by the Livestock Market Information Center. Drought and robust market prices seemed to push more lambs on feed at the time. That trend has shifted and it will have some impact on domestic lamb supply available for the year-end holidays. As of November 1 it is estimated that the supply of lambs on feed was 22.4% lower than a year ago and 14.8% lower than the five year average.

Retail features and Upcoming Holidays: Retail lamb is decidedly a seasonal item, with the bulk of features happening around Easter and then Thanksgiving, Christmas, and Hanukkah. Jewish holidays also tend to provide some support but the timing will vary a little. This year Rosh Hashanah was in late September and we noted robust features leading to it and then for Sukkot on October 10-11. That helps explain the feature rate during the month of September was 266% higher than the previous year and the highest for this time of year in the last five years. Features in October were up just 3% vs. last year, however. Loin chops and blade chops saw the biggest features in October and retail feature prices were steady to lower. The average feature price for loin chops was \$10.7/lb., down 10% from a year ago while the average price for blade chops was \$7.9/lb., up 2% y/y.

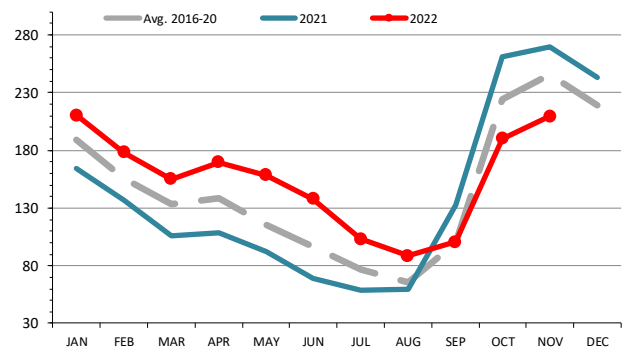
Top 10 States for Lamb/Sheep Slaughter and Production in September

Source: USDA-NASS. Analysis by Steiner Consulting

		Sep-21			Sep-22			Y/Y % Ch.
		Sltr.	Live Wt.	Prod.	Sltr.	Live Wt.	Prod.	
		'1000 hd	lb.	1000 lb.	'1000 hd	lb.	1000 lb.	Productior
1	Colorado	37.8	138	5,221	32.5	161	5,229	0%
2	California	24.5	136	3,324	22.1	153	3,386	2%
3	Texas	21.2	99	2,103	18.9	117	2,214	5%
4	New Jersey	16.5	82	1,349	16.1	85	1,369	1%
5	Pennsylvania	8.6	107	920	9.5	106	1,012	10%
6	Ohio	4.9	152	743	4.2	155	644	-13%
7	Indiana	8.3	116	965	6.4	111	705	-27%
8	Oregon	4.5	125	567	5.1	137	699	23%
9	New York	5.0	104	521	4.4	104	452	-13%
10	Illinois	6.1	80	483	5.2	86	448	-7%
	Other	47.0	109	5,127	44.4	112	4,986	-3%
United States		184.4	116	21,323	168.8	125	21,144	-0.8%

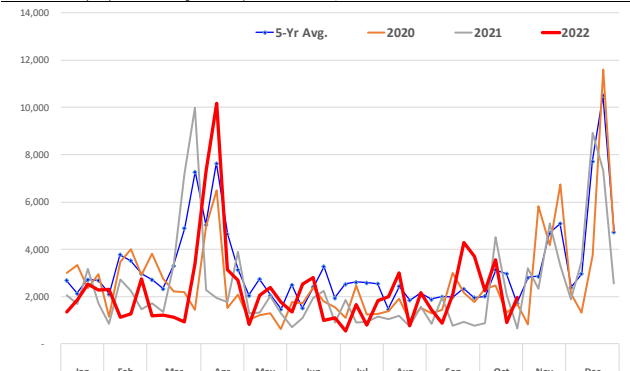
COLORADO LAMBS ON FEED. '000 head

Monthly Data Reported by the Livestock Market Information Center



NATIONAL RETAIL LAMB FEATURE REPORT: ACTIVITY INDEX

Source: USDA. Analysis by Steiner Consulting. Latest data point is for October 28, 2022



Imported Lamb Supply and Price Trends

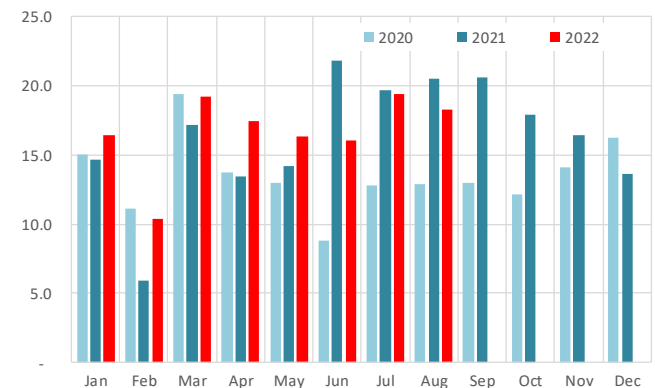
Imported Supply: Lamb and mutton imports from Australia were lower in June and July but August data was mixed, with lamb volume down but mutton imports higher than the previous year. We look at the data on a carcass weight basis so as to better compare with USDA carcass weight production. Total US imports of lamb from all markets in August were 22.8 million pounds, down 3.4 million pounds or 13.1% compared to a year ago. Imports from Australia were 18.3 million pounds, down 11% while imports from New Zealand at 4 million pounds were 26% lower. By comparison, US lamb yearling production on a carcass weight basis in August was 10.3 million pounds, up 1.5 million pounds or 17% higher than the previous year. The increase in domestic production in August was not sufficient to offset the decline in imports. Lamb imports from other countries remain extremely limited. Imports from Chile, the third largest supplier were 326k pounds and imports from Mexico were 144k pounds. USDA did not report any lamb imports from European countries. Recently British lamb was cleared to start shipping to the US, with the first shipment reportedly arriving in October. The strong US dollar may help bolster lamb shipments from this market although we think that supply will be relatively small for the foreseeable future.

As we were writing this update USDA issued trade data for September on a product weight basis. For those that are used to looking at trade numbers on that basis we have included the detailed statistics on pages 12-16. One thing to keep in mind when looking at the implied \$/lb. is that it can be misleading. Most of the volume of trade reported is in broad categories that include high and low value cuts. Depending on the mix, the overall value/MT will change but this does not tell you anything about the value of specific lamb items. Below we discuss some of the cut specific price trends.

Imported lamb prices: The table and charts on pages 7-8 offer an illustration of the latest price points for Australian and New Zealand lamb traded in the US market. Two major trends stand out. High value cuts, such as racks, have been quite resilient and prices for the most part are above where they started the year. Shoulder cuts have been much more volatile but they continue to trade higher than earlier in the year. However, we continue to see downward price pressure for shortloins and legs. The most recent price for chilled shortloins, one of the highest volume chilled items, was reported at \$5.50/lb. (wholesale), down 24% since the start of the year. The price of chilled boneless legs was reported at \$5.62/lb., down 13% since the start of the year. Leg prices peaked in April (Easter) at around \$7/lb. but have been trending down since then.

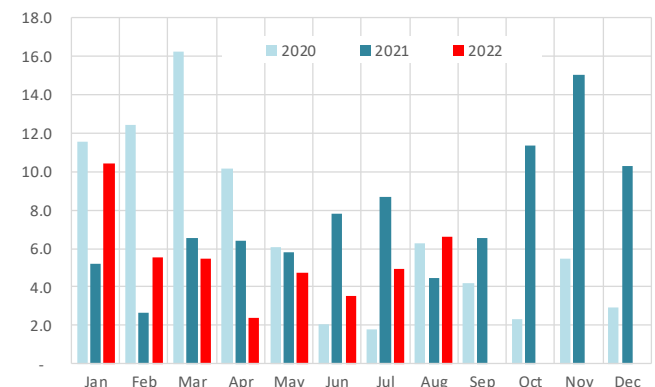
US Lamb Imports from Australia

Carcass Wt. Basis. Million Pounds. Analysis by Steiner Consulting



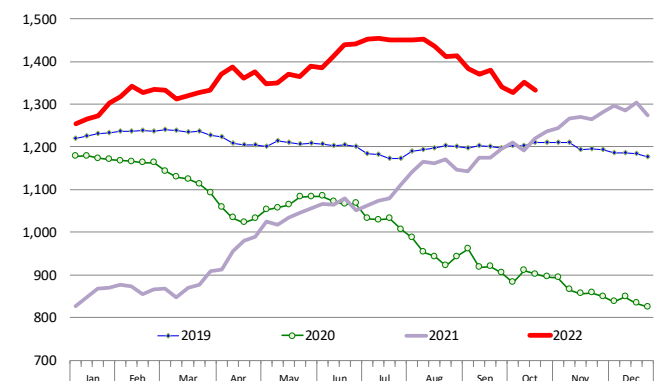
US Mutton Imports from Australia

Carcass Wt. Basis. Million Pounds. Analysis by Steiner Consulting



Australian Lamb Racks, Fresh, Cap-off, 28 oz/up. 4-WK Moving Avg.

Weekly Prices. Source: USDA

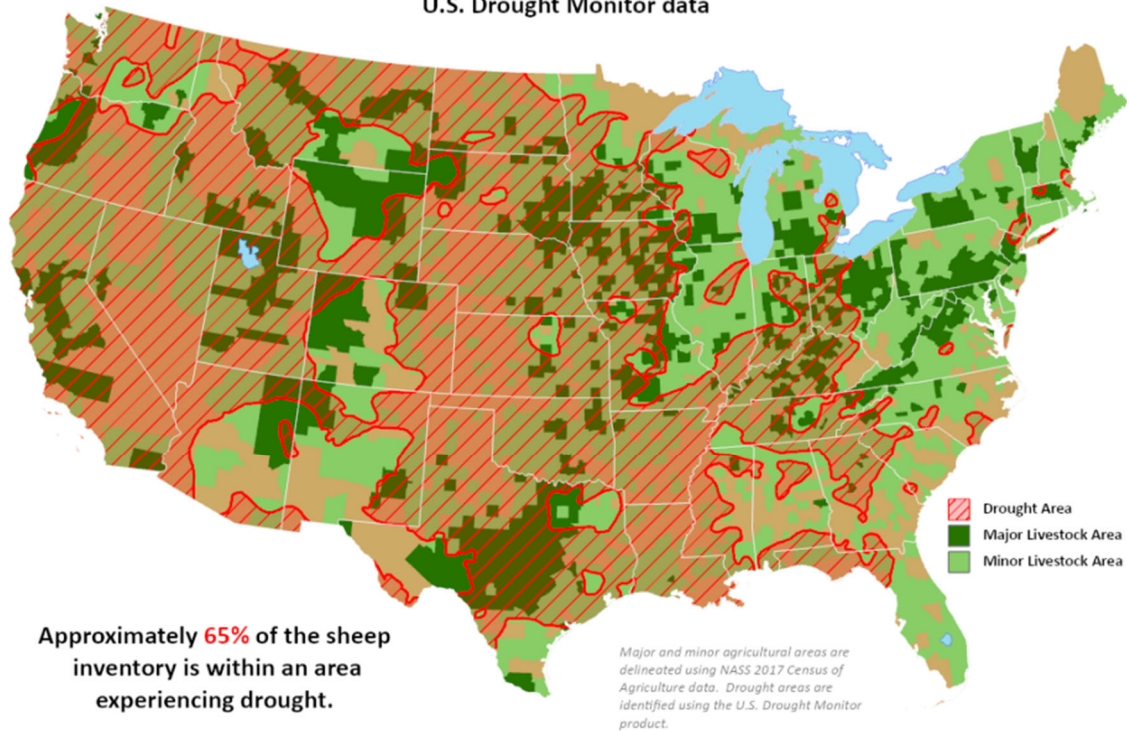




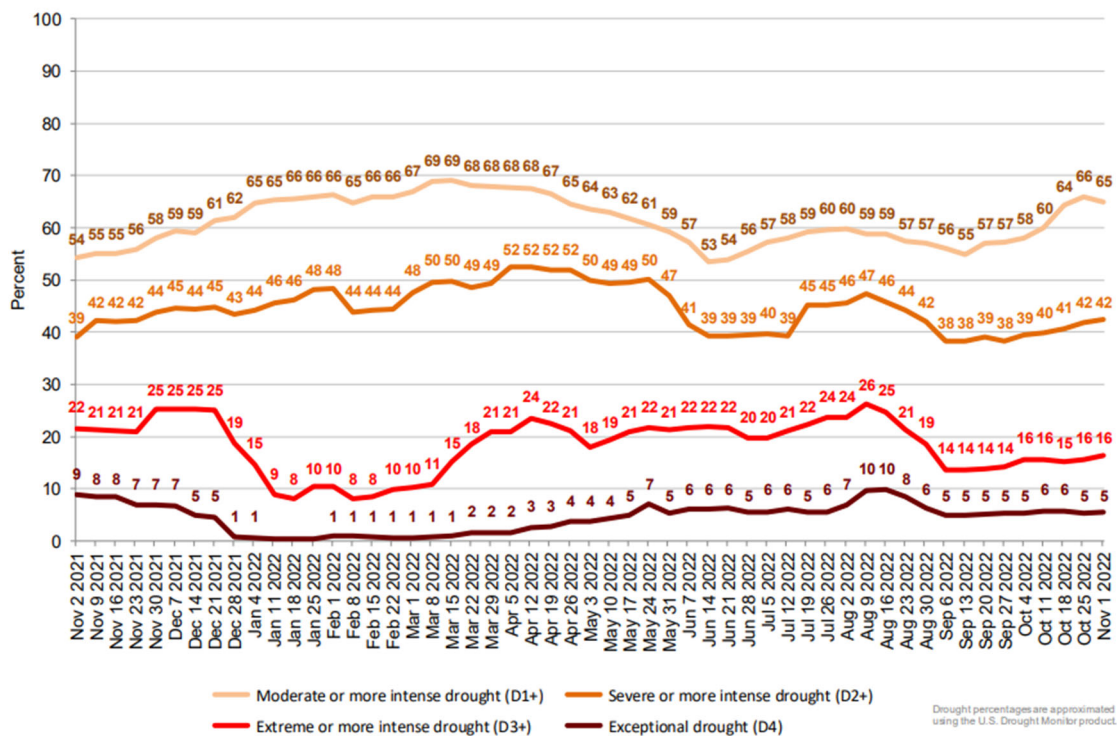
This product was prepared by the
USDA Office of the Chief Economist (OCE)
World Agricultural Outlook Board (WAOB)

Sheep Areas in Drought

Reflects **November 1, 2022**
U.S. Drought Monitor data



Percent of United States Sheep Located in Drought



US Domestic Lamb Cut and Primal Values

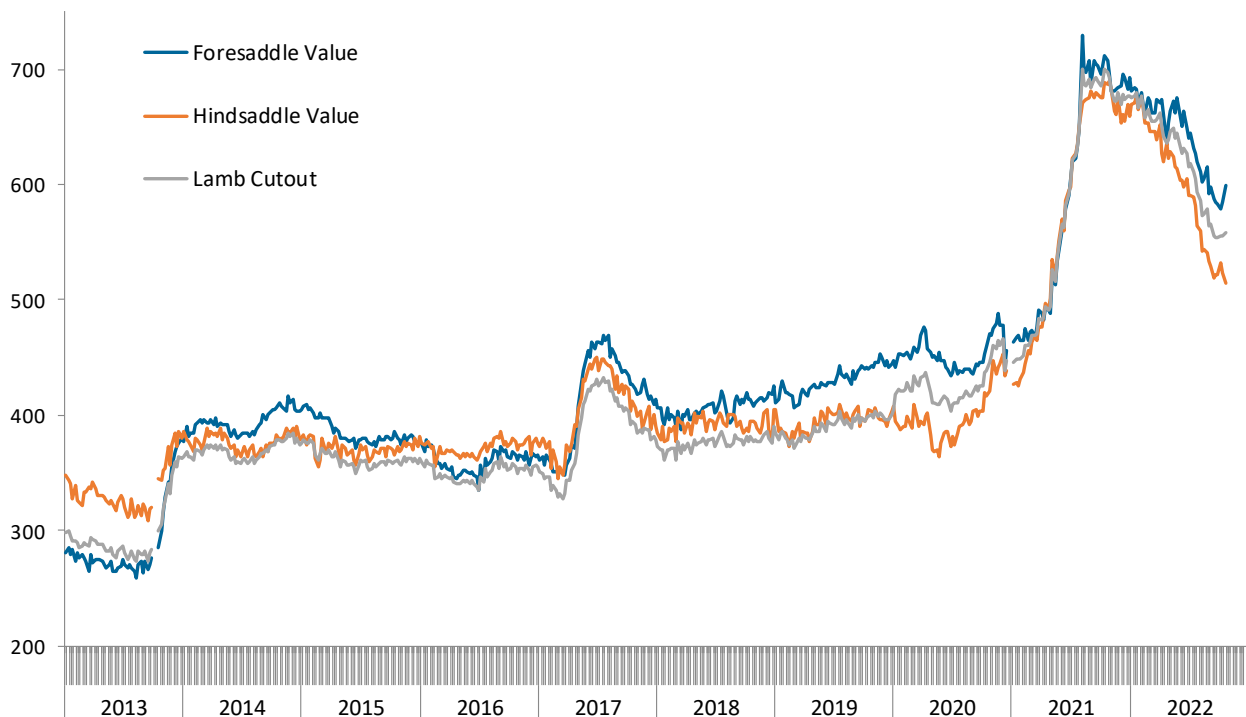
Weekly Prices from USDA. Wt. Average

		10/22/2021	10/14/2022	10/21/2022	w/w	y/y
		US\$/cwt	US\$/cwt	US\$/cwt	% ch.	% ch.
Foresaddle	204 Rack, 8-Rib, Medium	1452.1	1186.0	1261.6	6.4%	-13.1%
	209 Breast	393.1	388.8	398.0	2.4%	1.2%
	207 Shoulders, Square Cut	539.2	368.9	375.0	1.7%	-30.4%
	210 Foreshank	629.1	619.6	634.8	2.5%	0.9%
	Neck **	341.0	359.0	339.0	-5.6%	-0.6%
Foresaddle Value		707.8	584.9	599.7	2.5%	-15.3%
Hindsaddle	232 Loin, Trimmed, 4x4	1039.8	755.5	765.2	1.3%	-26.4%
	232E Flank, Untrimmed	353.6	328.4	292.5	-10.9%	-17.3%
	233A Leg, Trotter Off	620.5	463.5	467.1	0.8%	-24.7%
Hindsaddle Value		686.8	524.0	514.3	-1.8%	-25.1%
Carcass Value		697.6	555.4	558.3	0.5%	-20.0%

** Includes fresh and frozen product. Week to week prices tend to change significantly

Hindsaddle, Foresaddle and Total Lamb Cutout Value

Source: USDA Mandatory Price Reporting System. Analysis by Steiner Consulting (800.526.4612)



Domestic Lamb Cutout Value, USA

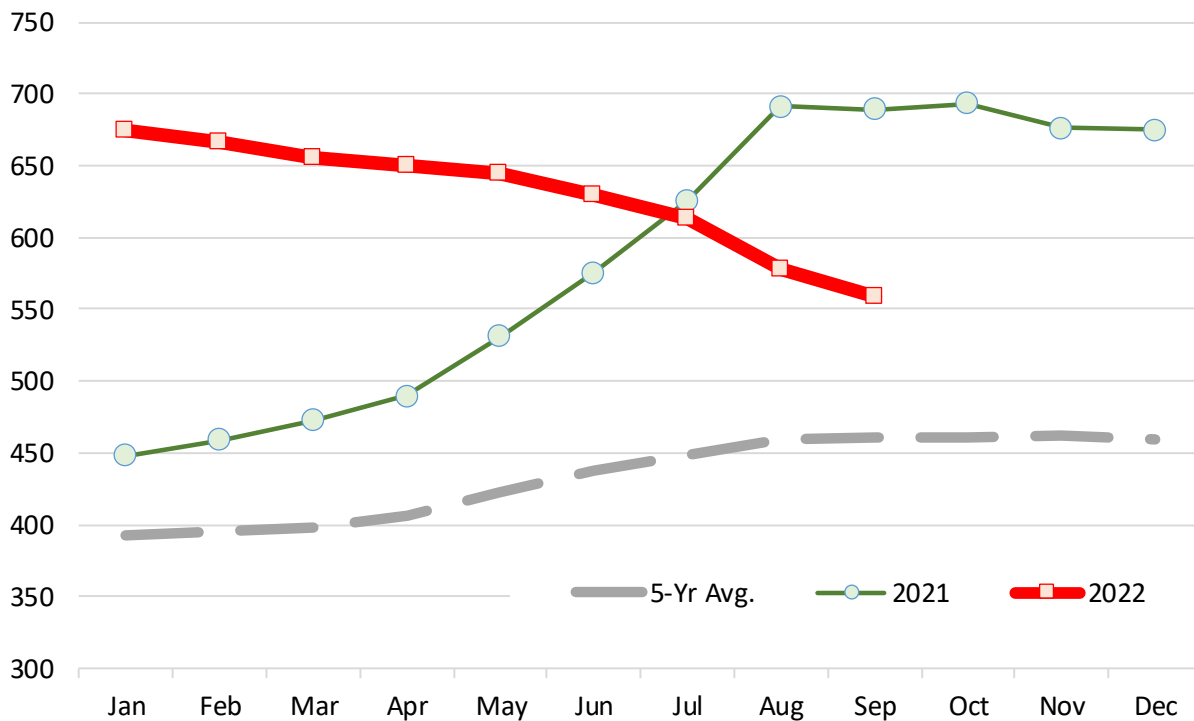
Source: Agricultural Marketin Service, USDA. \$ per 100 lb. Dressed Carcass

	2017	2018	2019	2020	2021	2022	5-Yr Avg.	% ch. vs. Yr Ago	% ch. vs. 5-Yr Avg.
Jan	348.34	368.85	383.43	417.78	447.93	674.75	393.26	50.6%	71.6%
Feb	338.77	370.47	386.61	423.08	459.01	666.76	395.59	45.3%	68.5%
Mar	332.97	369.88	382.21	429.97	472.79	656.04	397.57	38.8%	65.0%
Apr	355.50	373.25	380.42	430.76	489.76	649.56	405.94	32.6%	60.0%
May	400.16	377.43	389.48	417.20	531.44	645.15	423.14	21.4%	52.5%
Jun	425.44	382.01	391.81	412.29	575.84	629.63	437.48	9.3%	43.9%
Jul	428.96	381.66	397.03	412.33	625.93	613.89	449.18	-1.9%	36.7%
Aug	421.48	375.87	393.39	417.76	691.20	578.40	459.94	-16.3%	25.8%
Sep	414.16	378.23	396.62	423.22	689.51	558.19	460.35	-19.0%	21.3%
Oct	395.31	379.26	398.15	439.53	693.44		461.14		
Nov	386.74	379.39	407.49	461.31	676.35		462.26		
Dec	388.59	383.36	397.78	450.78	674.88		459.08		

Note: Monthly Cutout Value Calculated Using Weekly Data

USA Domestic Lamb Cutout Value

Monthly Avg. Price; Source: USDA



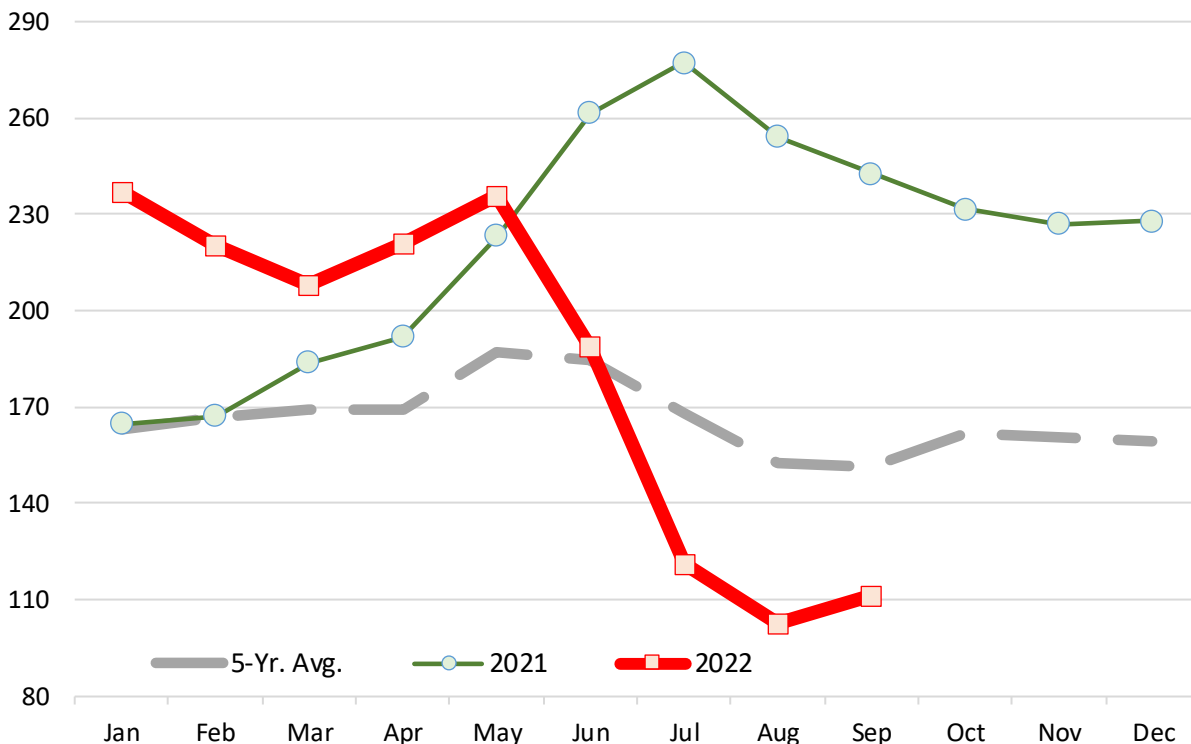
Slaughter Lamb Price, Sioux Falls, SD Basis

Monthly Average Prices, 100-150 lb. Woolled and Shorn, Choice & Prime 2-3 . \$ per 100 lb.

	2017	2018	2019	2020	2021	2022	5-Yr. Avg.	% ch. vs. Yr Ago.	% ch. vs. 5-Yr Avg.
Jan	141.7	142.1	135.8	157.2	164.9	237.0	163.1	43.7%	45.3%
Feb	144.6	154.1	142.6	170.6	167.4	220.6	166.6	31.8%	32.4%
Mar	158.1	153.6	150.4	161.9	184.0	207.9	169.3	13.0%	22.8%
Apr	177.9	156.0	162.2	107.8	192.0	220.8	169.5	15.0%	30.3%
May	209.9	161.6	165.4	127.5	223.3	235.7	187.2	5.6%	25.9%
Jun	200.6	166.6	157.4	133.0	261.5	189.0	184.7	-27.7%	2.3%
Jul	177.7	146.3	152.0	134.7	277.2	121.1	168.2	-56.3%	-28.0%
Aug	156.3	132.4	151.5	119.8	254.2	102.7	152.8	-59.6%	-32.8%
Sep	144.0	129.3	147.9	133.3	242.9	111.6	151.5	-54.1%	-26.4%
Oct	134.3	130.4	148.4	165.3	231.6		162.0		
Nov	131.4	129.1	150.3	165.7	227.1		160.7		
Dec	126.8	133.0	151.7	156.5	228.0		159.2		

*Source: USDA***Slaughter Lamb Price, Sioux Falls, SD Basis**

Monthly Average Prices, 100-150 lb. Woolled and Shorn, Choice & Prime 2-3 . \$ per 100 lb.



Imported Lamb Price Summary

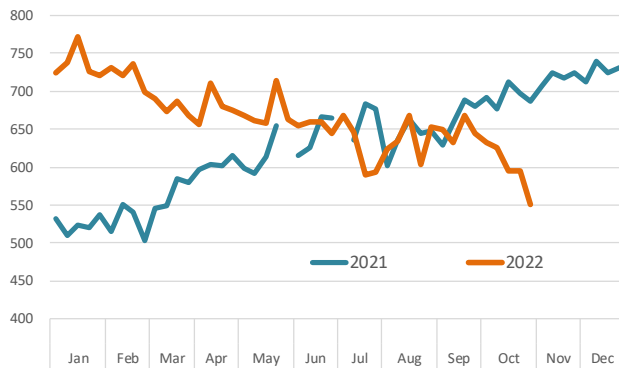
Source: USDA Agricultural Marketing Service, Mandatory Price Reporting

	2021 Volume	2021 Wt. Avg. \$	2021 Implied Value	Nov 1, 2021	Oct 24, 2022	Oct 31, 2022	% ch. vs. wk Ago	% ch. vs. Year Ago
Fresh/Chilled								
	Pounds	\$/lb.	Total \$					
AUS Shortloin, 1-Rib, 0x0	27,268,498	\$ 6.31	\$ 172,112,184	\$ 6.87	\$ 5.95	\$ 5.51	-7.4%	-19.9%
AUS Leg, bnls	18,231,276	\$ 5.16	\$ 93,994,274	\$ 6.12	\$ 5.75	\$ 5.62	-2.2%	-8.3%
AUS Shoulder, Square-cut	16,288,026	\$ 3.77	\$ 61,481,331	\$ 3.92		\$ 4.01	n/a	2.5%
AUS Rack, FR, Cap-off, 28 oz/up	6,394,396	\$ 10.82	\$ 69,212,972	\$ 12.64	\$ 13.28	\$ 14.32	7.8%	13.3%
AUS Shortloin, 1-Rib, 1x1	3,235,858	\$ 6.34	\$ 20,517,997	\$ 6.97	\$ 5.95	\$ 5.74	-3.5%	-17.6%
AUS Rack, FR, Cap-off, 20-24 oz	3,216,613	\$ 10.72	\$ 34,483,147	\$ 13.17	\$ 12.97	\$ 12.96	-0.1%	-1.5%
AUS Rack, FR, Cap-off, 24-28 oz	2,772,092	\$ 11.24	\$ 31,168,599	\$ 13.54	\$ 14.57	\$ 14.47	-0.7%	6.9%
AUS Leg, semi bnls	2,759,946	\$ 4.87	\$ 13,450,899	\$ 5.01	\$ 5.22	\$ 4.72	-9.5%	-5.6%
AUS Foreshank, VP	1,517,537	\$ 3.90	\$ 5,919,832	\$ 4.18	\$ 4.26	\$ 4.36	2.4%	4.4%
AUS Leg, Long	1,004,768	\$ 5.41	\$ 5,431,190	\$ 5.63	\$ 5.55	\$ 5.47	-1.5%	-2.9%
AUS Tenderloin	15,594	\$ 13.21	\$ 206,009		\$ 14.07	\$ 14.19	0.8%	
AUS Shoulder, Square-cut, bnls	5,112	\$ 6.75	\$ 34,506				n/a	
Subtotal	82,689,010	\$ 6.00	\$ 496,421,403	\$ 6.77	\$ 5.65	\$ 6.32	11.8%	-6.6%
Frozen								
NZ Rack, FR, Cap-off, 16-20 oz	4,770,114	\$ 9.16	\$ 43,700,043	\$ 10.97	\$ 13.36	\$ 13.33	-0.2%	21.5%
AUS Foreshank, LP	4,658,742	\$ 3.14	\$ 14,635,452	\$ 3.60	\$ 3.85	\$ 3.88	0.8%	7.9%
AUS Leg, Long	3,680,271	\$ 4.75	\$ 17,488,259	\$ 5.51	\$ 5.03	\$ 4.58	-9.0%	-16.9%
AUS Leg, bnls	2,669,822	\$ 5.09	\$ 13,584,282	\$ 5.45	\$ 4.68	\$ 4.72	1.0%	-13.4%
NZ Rack, FR, Cap-off, 12-16 oz	2,289,743	\$ 9.87	\$ 22,607,266	\$ 11.14	\$ 13.45	\$ 13.38	-0.5%	20.2%
AUS Hindshank, LP	2,001,445	\$ 3.48	\$ 6,958,122	\$ 3.66	\$ 3.86	\$ 3.93	1.8%	7.4%
NZ Rack, FR, Cap-off, 20 oz/up	1,746,942	\$ 9.32	\$ 16,279,515	\$ 10.93	\$ 13.25	\$ 13.14	-0.8%	20.3%
AUS Shoulder, Square-cut, bnls	1,675,062	\$ 4.47	\$ 7,491,761	\$ 5.73		\$ 5.59	n/a	-2.4%
AUS Shoulder, Square-cut	1,631,086	\$ 3.21	\$ 5,233,086	\$ 3.46	\$ 5.35		n/a	
AUS Leg, bnls, shank-off	1,471,658	\$ 4.95	\$ 7,286,605	\$ 5.36	\$ 4.38	\$ 4.54	3.6%	-15.3%
AUS Rack, FR, Cap-off, 28 oz/up	427,391	\$ 11.00	\$ 4,702,295		\$ 14.31	\$ 14.17	-1.0%	
AUS Rack, FR, Cap-off, 24-28 oz	367,383	\$ 10.18	\$ 3,739,478	\$ 12.54	\$ 13.97		n/a	
AUS Rack, FR, Cap-off, 20-24 oz	359,604	\$ 9.81	\$ 3,527,955	\$ 13.32	\$ 13.09	\$ 14.30	9.3%	7.4%
AUS Rack, FR, Cap-off, 20 oz/dn	67,595	\$ 8.77	\$ 592,817				n/a	
NZ Rack, FR, Cap-off, 12 oz/dn	63,781	\$ 9.73	\$ 620,613				n/a	
AUS Tenderloin	29,583	\$ 11.41	\$ 337,643	\$ 12.89	\$ 9.91	\$ 10.65	7.4%	-17.4%
AUS Hindshank, VP	18,188	\$ 4.19	\$ 76,182		\$ 4.75	\$ 4.62	-2.8%	
Subtotal	27,910,222	\$ 6.05	\$ 168,785,191	\$ 6.75	\$ 7.36	\$ 7.16	-2.7%	6.1%

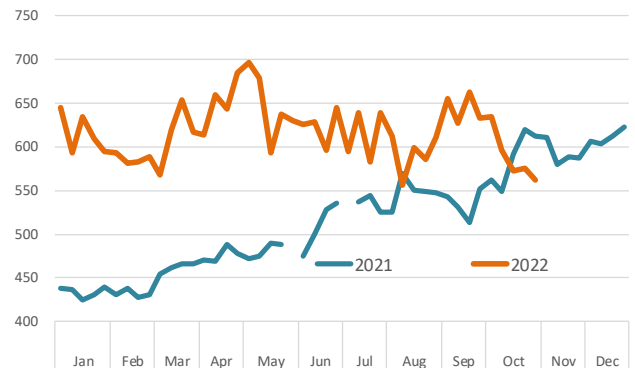
Please note that the prices, volume and sales value reported above represents only subset of total US lamb imports. It only reflects the data reported through the Mandatory Price Reporting System. It is only for negotiated sales, no formula sales. Trade from smaller importers and traders is not included in the summary above. Data that does not meet the confidentiality guidelines also is not included in the above table.

Shortloin, 1-Rib, 0x0, Australian, Chilled

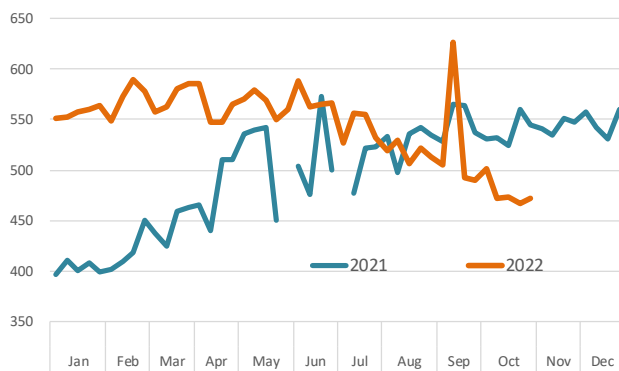
Source: USDA-AMS. Weighted Average Weekly Price in US\$/cwt.

**Leg, bnls, Australian, Chilled**

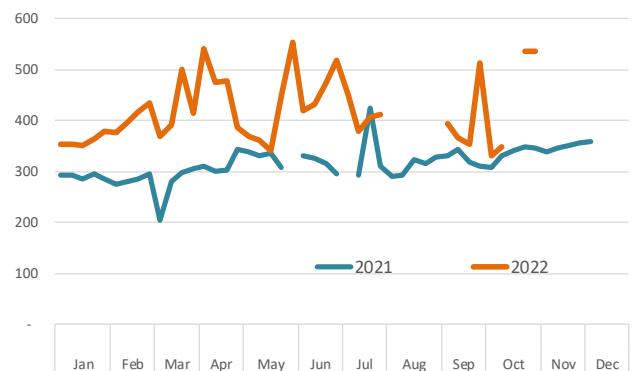
Source: USDA-AMS. Weighted Average Weekly Price in US\$/cwt.

**Leg, bnls, Australian, Frozen**

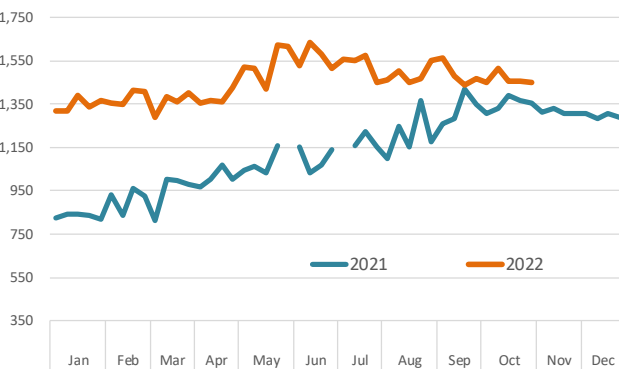
Source: USDA-AMS. Weighted Average Weekly Price in US\$/cwt.

**Shoulder Cut, Australia, Frozen**

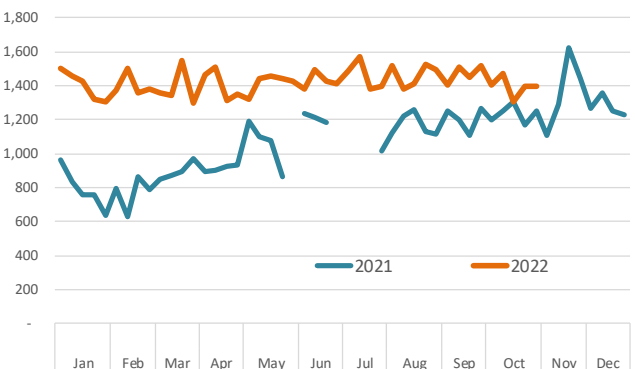
Source: USDA-AMS. Weighted Average Weekly Price in US\$/cwt.

**Racks, Cap-off, 24-28oz, Australian, Chilled**

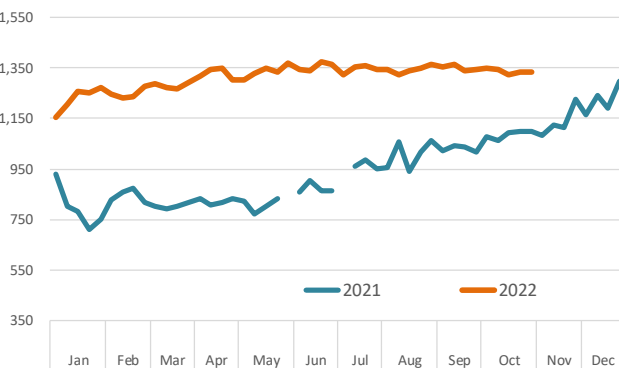
Source: USDA-AMS. Weighted Average Weekly Price in US\$/cwt.

**Racks, Cap-off, 24-28oz, Australian, Frozen**

Source: USDA-AMS. Weighted Average Weekly Price in US\$/cwt.

**Racks, Cap-off, 16-20oz, New Zealand, Frozen**

Source: USDA-AMS. Weighted Average Weekly Price in US\$/cwt.



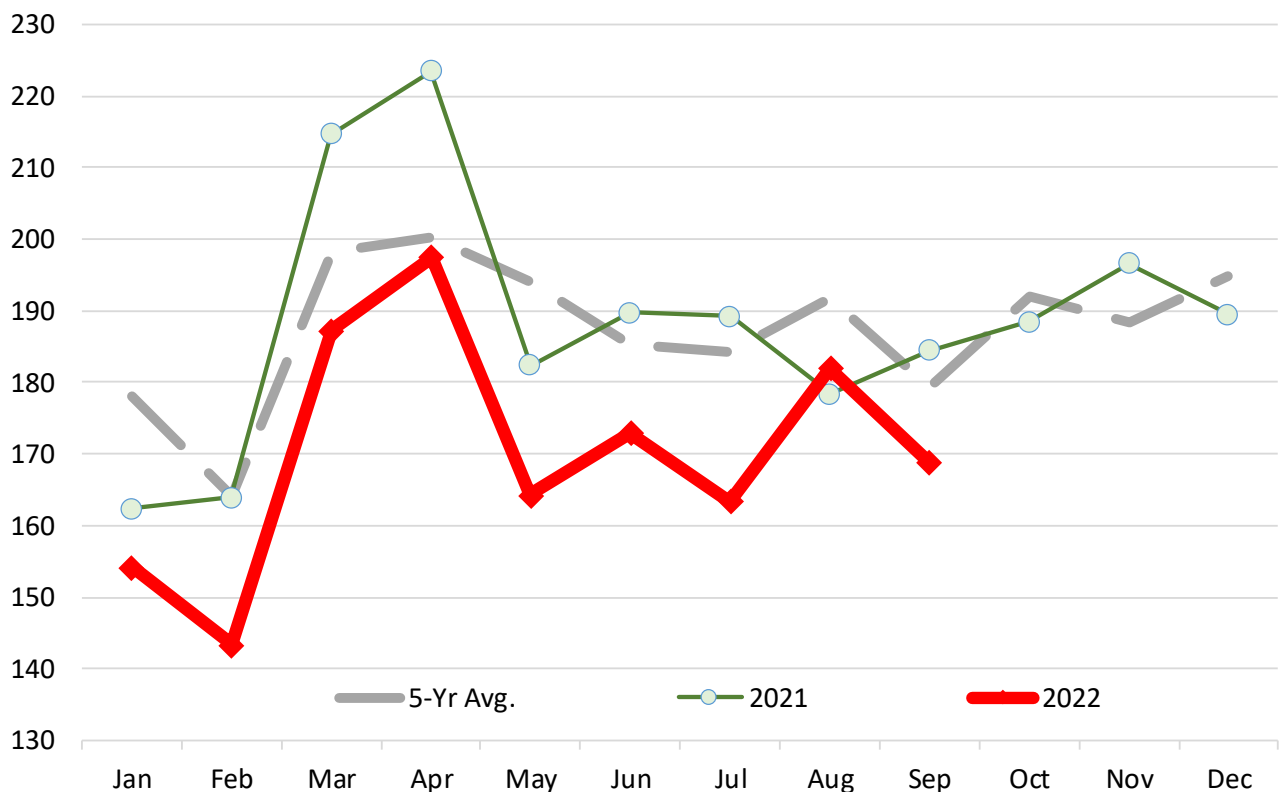
Lamb & Sheep Slaughter. Monthly. '000 Head

	2017	2018	2019	2020	2021	2022	5-Yr Avg.	% ch Yr Ago	% ch 5-Yr Avg.
Jan	177.4	180.6	187.2	183.3	162.4	154.2	178.2	-5.0%	-13.5%
Feb	159.4	164.3	168.7	163.8	163.9	143.4	164.0	-12.5%	-12.6%
Mar	196.3	201.5	190.4	187.7	214.7	187.3	198.1	-12.8%	-5.5%
Apr	179.7	181.5	235.7	181.2	223.5	197.5	200.3	-11.6%	-1.4%
May	180.8	201.8	210.0	195.4	182.4	164.3	194.1	-9.9%	-15.3%
Jun	187.7	180.6	175.4	193.2	189.8	172.9	185.3	-8.9%	-6.7%
Jul	166.9	180.0	188.6	196.2	189.3	163.4	184.2	-13.7%	-11.3%
Aug	194.6	205.4	202.9	178.0	178.4	182.0	191.9	2.0%	-5.1%
Sep	176.4	172.2	179.3	185.0	184.4	168.8	179.5	-8.5%	-5.9%
Oct	183.5	199.9	206.0	182.5	188.5		192.1		
Nov	187.4	195.3	181.0	181.3	196.6		188.3		
Dec	188.1	201.8	196.5	197.8	189.5		194.7		

Source: USDA

Lamb & Sheep Slaughter. Monthly. '000 Head

Monthly Data. Source: USDA



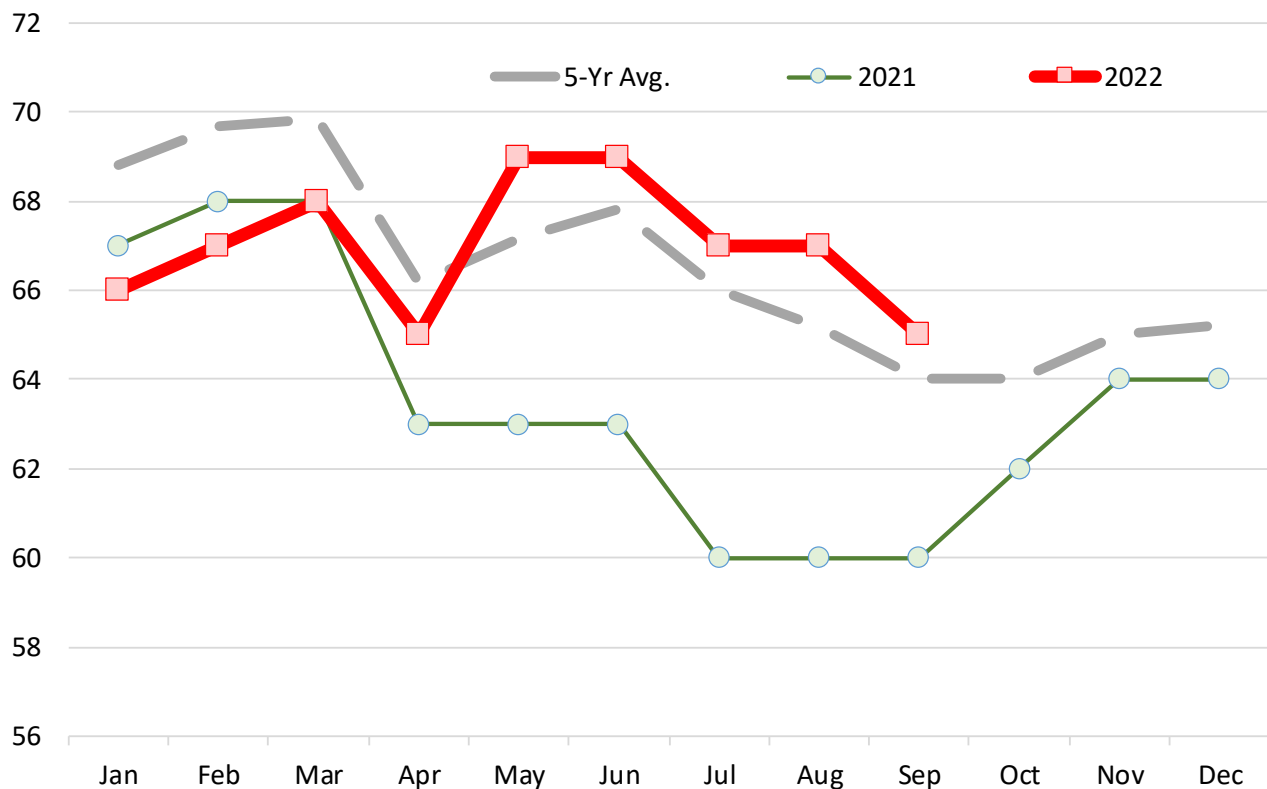
Lamb and Yearling Dressed Weights. Monthly. Avg. Pounds per Carcass

	2017	2018	2019	2020	2021	2022	5-Yr Avg.	% ch Yr Ago	% ch 5-Yr Avg.
Jan	71.00	73.00	69.00	67.00	67.00	66.00	68.83	-1.5%	-4.1%
Feb	72.00	74.00	69.00	68.00	68.00	67.00	69.67	-1.5%	-3.8%
Mar	72.00	72.00	71.00	68.00	68.00	68.00	69.83	0.0%	-2.6%
Apr	67.00	71.00	67.00	64.00	63.00	65.00	66.17	3.2%	-1.8%
May	67.00	70.00	66.00	68.00	63.00	69.00	67.17	9.5%	2.7%
Jun	68.00	71.00	68.00	68.00	63.00	69.00	67.83	9.5%	1.7%
Jul	68.00	70.00	66.00	65.00	60.00	67.00	66.00	11.7%	1.5%
Aug	67.00	68.00	65.00	64.00	60.00	67.00	65.17	11.7%	2.8%
Sep	66.00	69.00	63.00	61.00	60.00	65.00	64.00	8.3%	1.6%
Oct	66.00	67.00	64.00	61.00	62.00		64.00		
Nov	68.00	68.00	64.00	61.00	64.00		65.00		
Dec	69.00	67.00	63.00	63.00	64.00		65.20		

Source: USDA

Lamb and Yearling Dressed Weights. Monthly. Avg. Pounds per Carcass

Monthly Data. Source: USDA

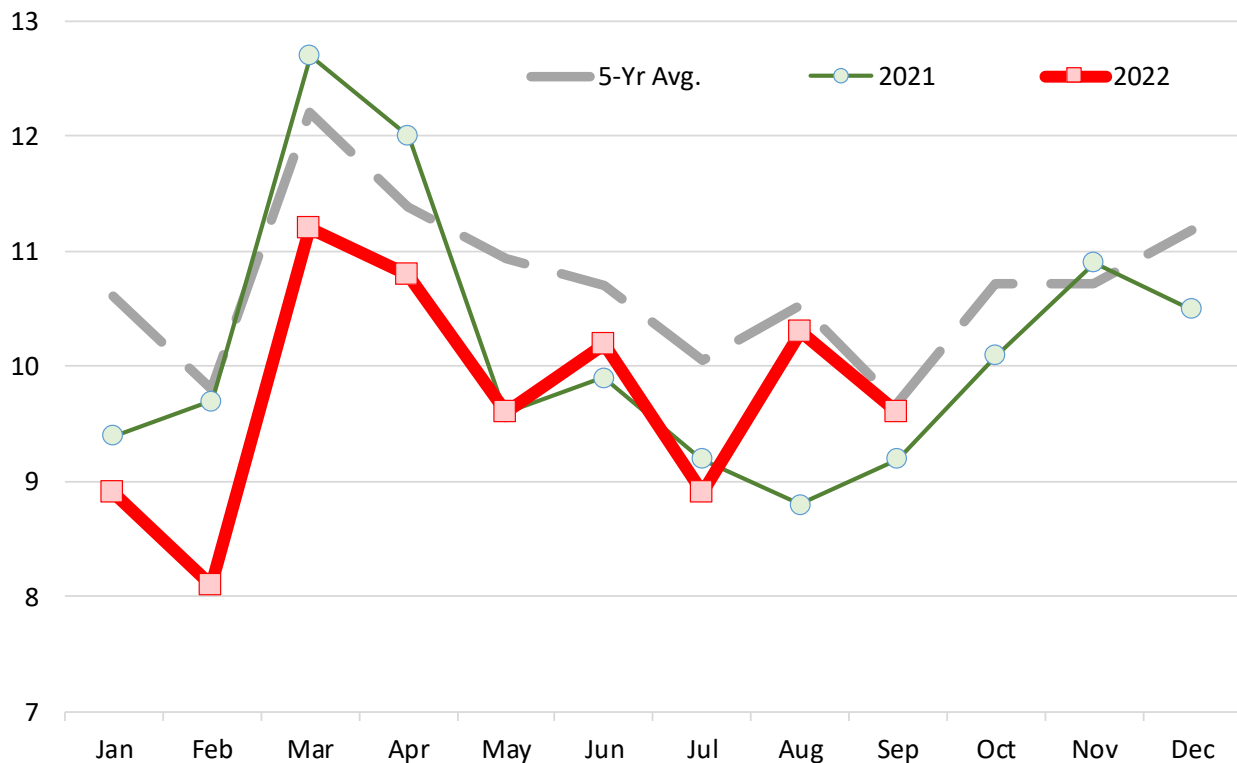


Lamb Yearling Production. Monthly. Carcass Wt. Basis. Million Lb.

	2017	2018	2019	2020	2021	2022	5-Yr Avg.	% ch Yr Ago	% ch 5-Yr Avg.
Jan	11.4	11.7	11.4	10.9	9.4	8.9	10.6	-5.3%	-16.2%
Feb	10.4	10.8	10.1	9.7	9.7	8.1	9.8	-16.5%	-17.3%
Mar	12.7	13.3	12.1	11.3	12.7	11.2	12.2	-11.8%	-8.3%
Apr	10.4	11.5	13.7	9.9	12.0	10.8	11.4	-10.0%	-5.1%
May	10.5	12.5	12.1	11.3	9.6	9.6	10.9	0.0%	-12.2%
Jun	11.3	11.2	10.3	11.3	9.9	10.2	10.7	3.0%	-4.7%
Jul	9.9	11.0	10.7	10.6	9.2	8.9	10.1	-3.3%	-11.4%
Aug	11.6	11.9	11.1	9.5	8.8	10.3	10.5	17.0%	-2.2%
Sep	10.1	10.1	9.7	9.4	9.2	9.6	9.7	4.3%	-0.9%
Oct	10.9	11.9	11.5	9.2	10.1		10.7		
Nov	11.4	11.8	10.2	9.3	10.9		10.7		
Dec	11.8	11.9	11.0	10.7	10.5		11.2		

*Source: USDA***Lamb Yearling Production. Monthly. Carcass Wt. Basis. Million Lb.**

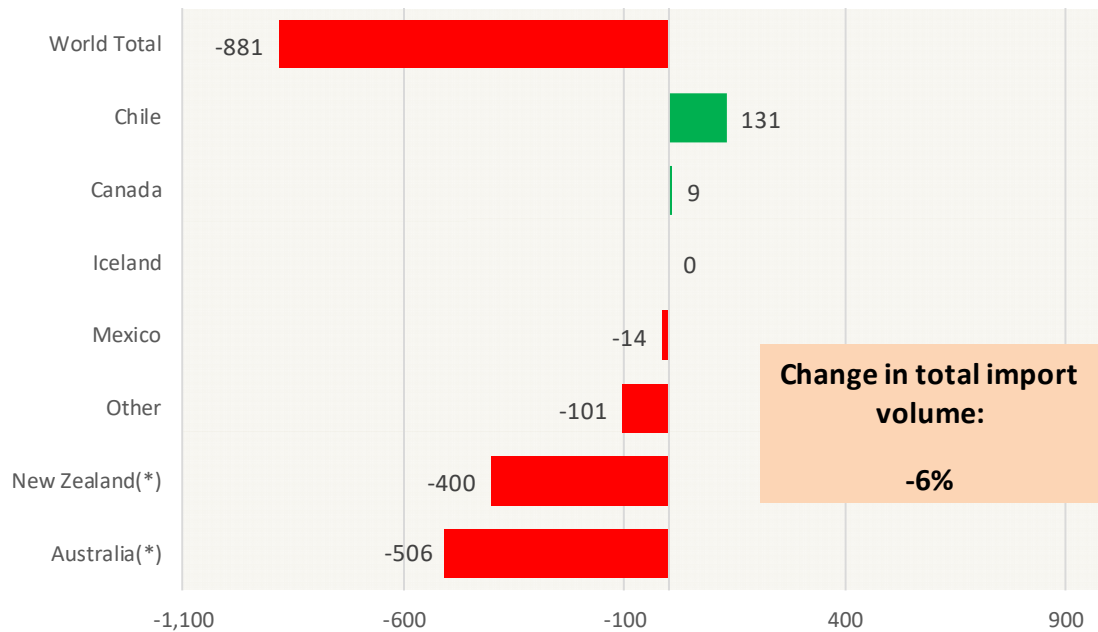
Monthly Data. Source: USDA



Y/Y Ch. in Sep. 22 vs. Sep. 21 US Mutton, Goat, Lamb Imports

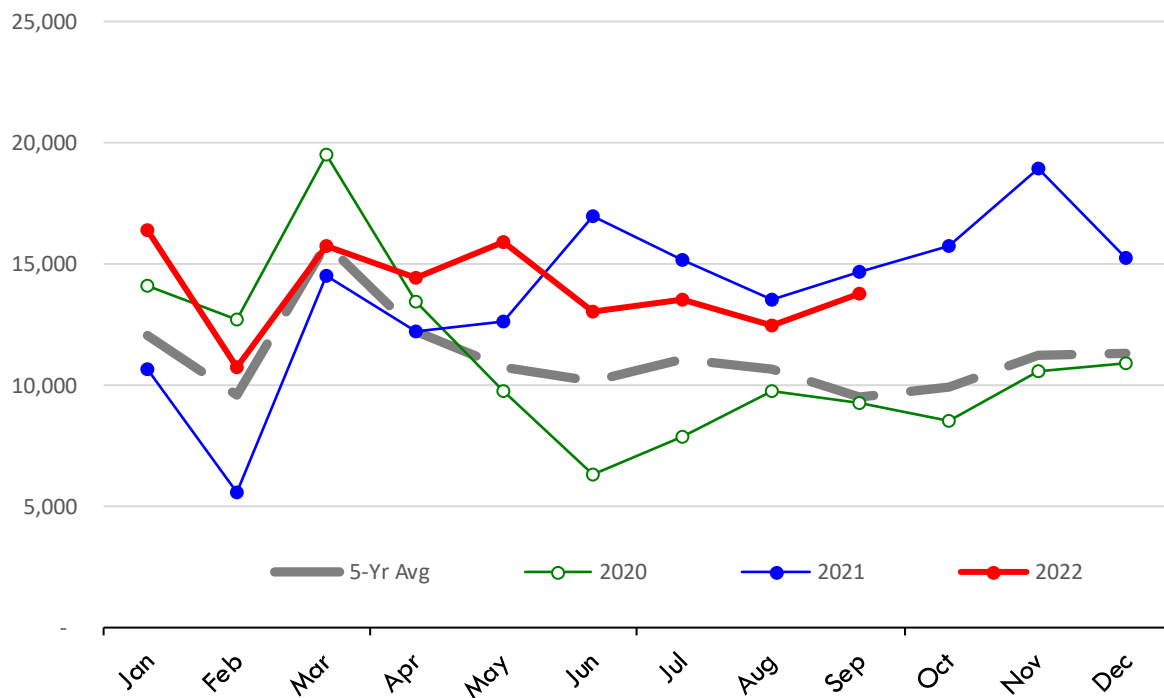
Source: USDA/FAS

Units: Metric Tons



Quantity of US Imports of Fr/Frz Mutton, Goat, Lamb: World Total

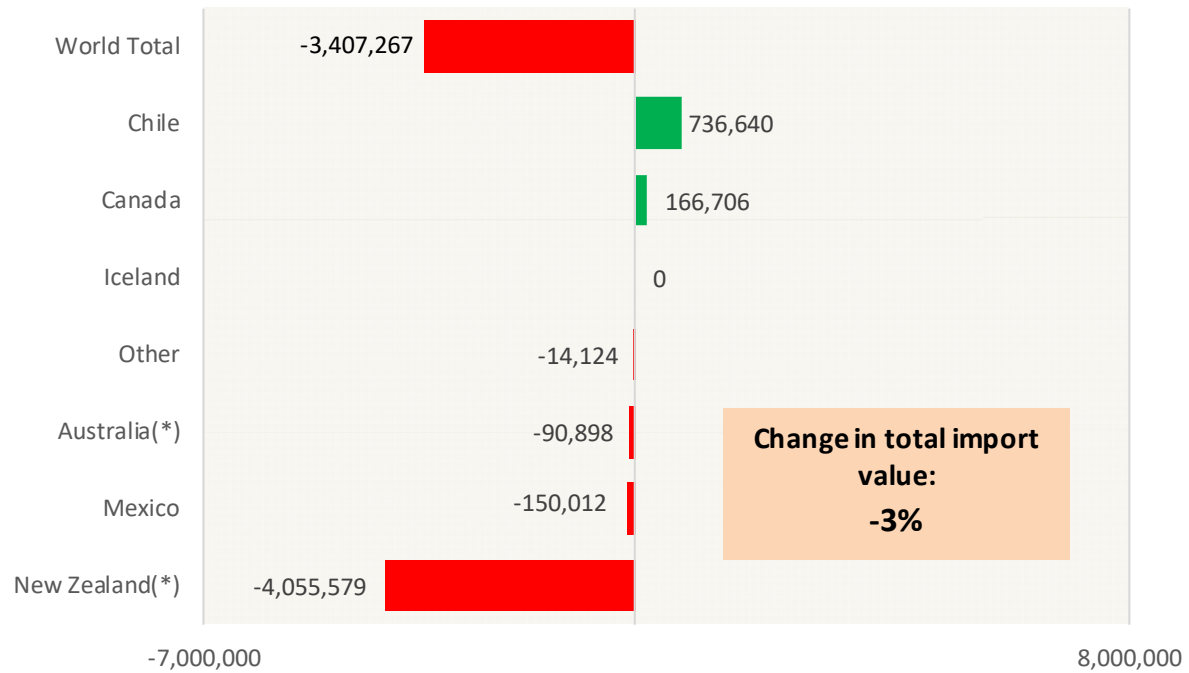
Source: USDA/FAS. Units: Metric Ton. Analysis by: Steiner Consulting (800.526.4612)



Y/Y Ch. in Sep. 22 vs. Sep 21 US Mutton, Goat, Lamb Import Value (\$)

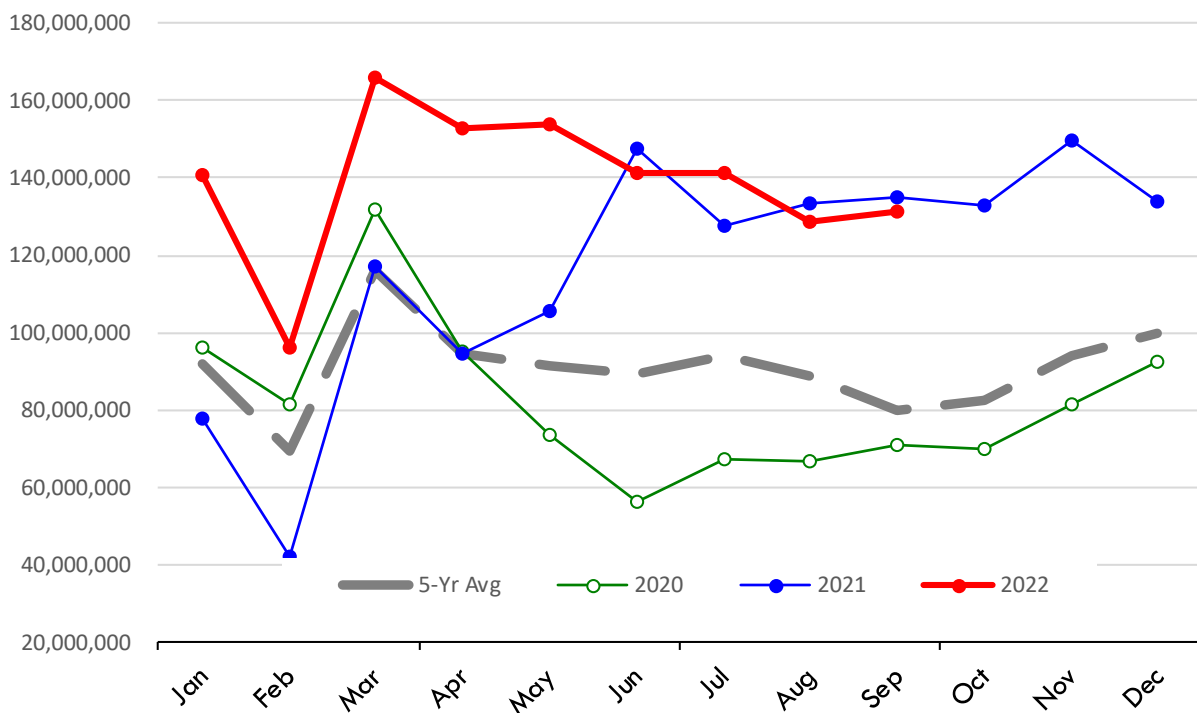
Source: USDA/FAS

Units: US Dollars



\$ Value of US Imports of Fr/Frz Mutton, Goat, Lamb: World Total

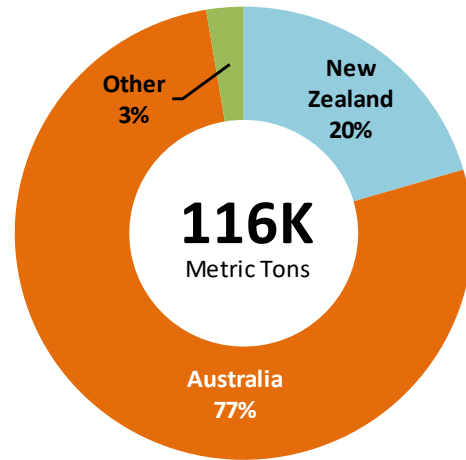
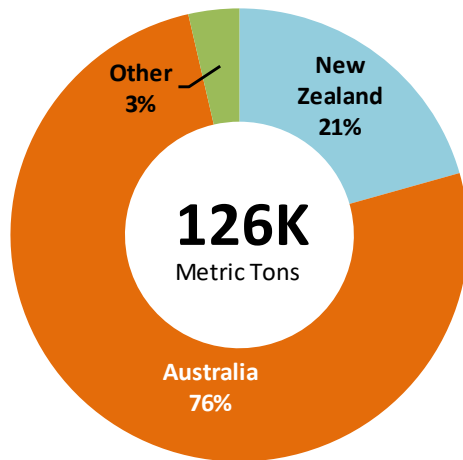
Source: USDA/FAS. Units: US Dollars. Analysis by: Steiner Consulting (800.526.4612)



TOP US LAMB IMPORT MARKETS IN **2022** TOP US LAMB IMPORT MARKETS IN **2021**

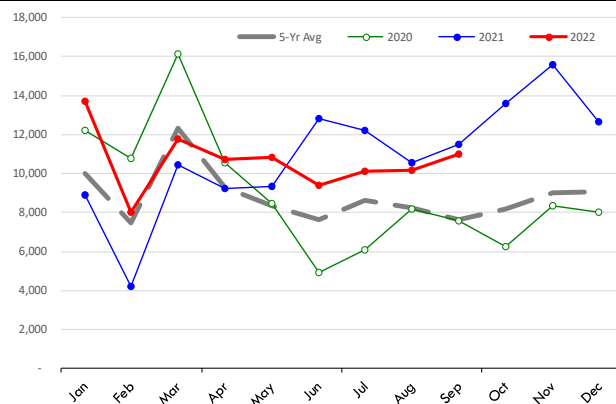
Total Volume and Country Shares for Period Jan - Sep 2022, MT

Total Volume and Country Shares for Period Jan - Sep 2021, MT



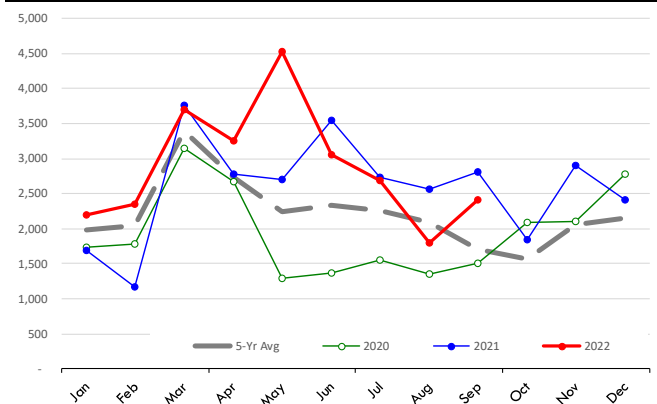
Quantity of US Imports of Fr/Frz Mutton, Goat, Lamb: Australia(*)

Source: USDA/FAS. Units: Metric Ton. Analysis by: Steiner Consulting (800.526.4612)



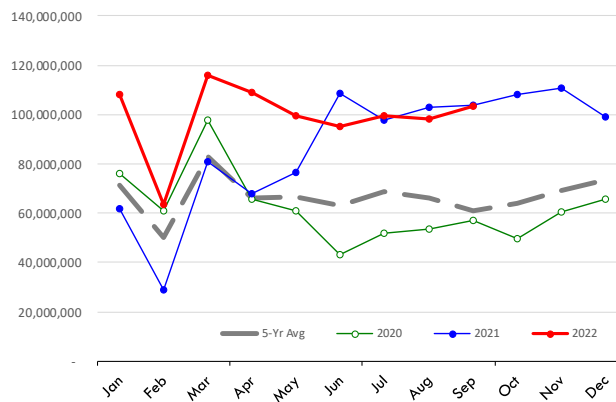
Quantity of US Imports of Fr/Frz Mutton, Goat, Lamb: New Zealand(*)

Source: USDA/FAS. Units: Metric Ton. Analysis by: Steiner Consulting (800.526.4612)



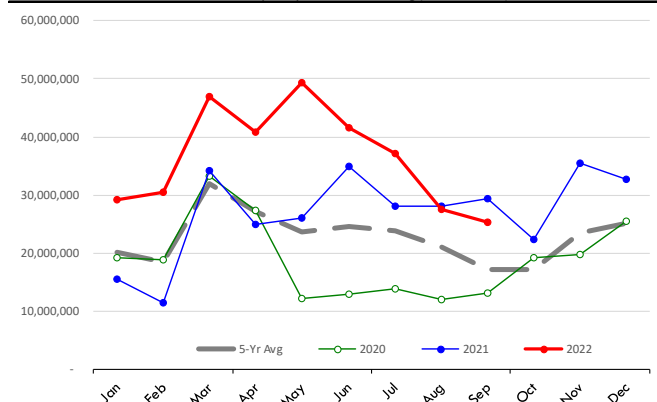
\$ Value of US Imports of Fr/Frz Mutton, Goat, Lamb: Australia(*)

Source: USDA/FAS. Units: US Dollars. Analysis by: Steiner Consulting (800.526.4612)



\$ Value of US Imports of Fr/Frz Mutton, Goat, Lamb: New Zealand(*)

Source: USDA/FAS. Units: US Dollars. Analysis by: Steiner Consulting (800.526.4612)



Lamb Trade Data Detail

Data source: USDA-FAS. Analysis by Steiner Consulting

Summary of US Lamb Imports by Country. Kilogram (shipped wt.) and USD

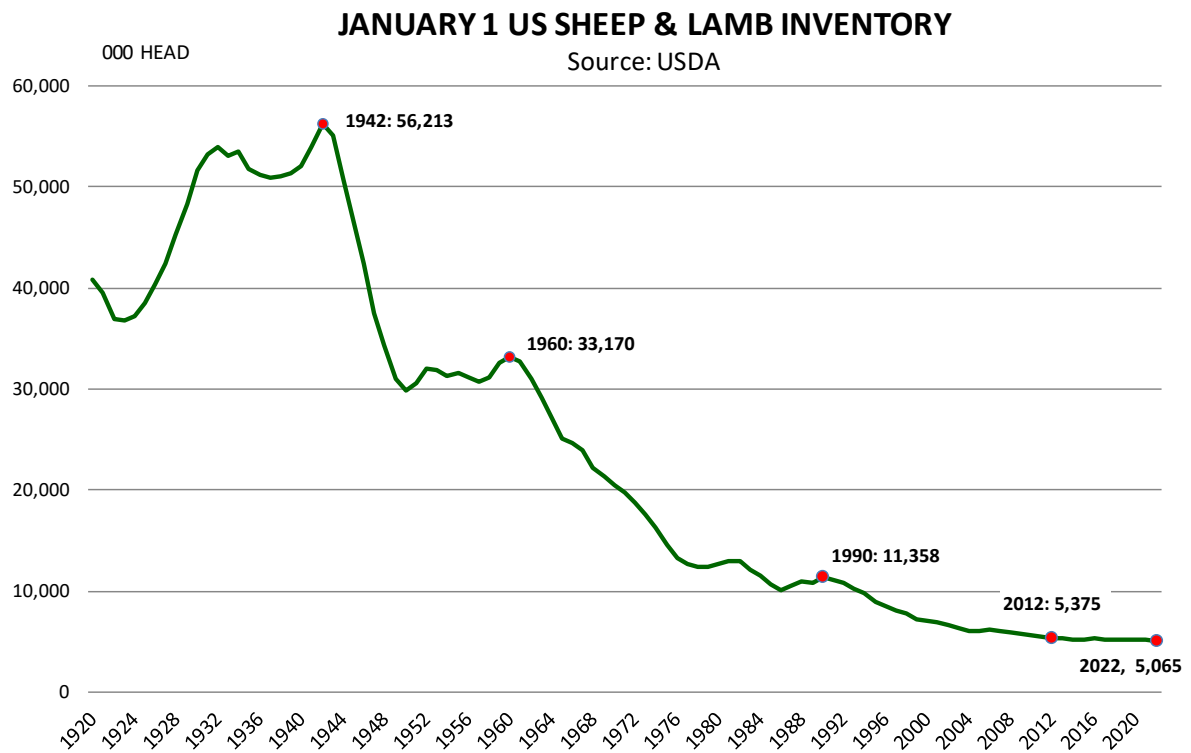
Data source: USDA-FAS and Census. Analysis by Steiner Consulting

	Sep-21			Sep-22			Jan - Sep 2021			Jan - Sep 2022		
	\$US	Kg	\$/kg.	\$US	Kg	\$/kg.	\$US	Kg	\$/kg.	\$US	Kg	\$/kg.
0204222090 Various Lamb Cuts, bone-in, fresh or chilled												
Australia	30,127,597	1,826,000	16.50	24,943,841	1,402,100	17.79	175,013,000	10,235,200	17.10	264,423,000	15,690,000	16.85
New Zealand	4,544,143	265,400	17.12	4,747,460	267,500	17.75	41,587,000	2,532,900	16.42	60,941,000	3,096,200	19.68
Other Countries	24,209	1,600	15.13	276,794	17,800	15.55	1,053,000	71,400	14.75	1,590,000	101,900	15.60
World Total	34,695,949	2,093,000	16.58	29,968,095	1,687,400	17.76	217,653,000	12,839,500	16.95	326,954,000	18,888,100	17.31
0204422090 Various Lamb Cuts, bone-in, frozen												
Australia	11,318,280	1,174,900	9.63	16,088,119	1,465,500	10.98	56,378,000	6,856,600	8.22	109,902,000	10,501,900	10.46
New Zealand	10,430,849	695,400	15.00	11,845,802	679,300	17.44	81,844,000	6,302,100	12.99	152,283,000	8,411,600	18.10
Other Countries	15,229	1,800	8.46	114,251	19,300	5.92	571,000	57,300	9.97	4,050,000	369,400	10.96
World Total	21,764,358	1,872,100	11.63	28,048,172	2,164,100	12.96	138,793,000	13,216,000	10.50	266,235,000	19,282,900	13.81
0204432000 Various Lamb Cuts, boneless, frozen												
Australia	16,349,163	1,840,900	8.88	24,066,617	2,363,300	10.18	106,397,000	11,915,000	8.93	139,403,000	13,044,800	10.69
New Zealand	2,038,026	274,700	7.42	1,412,673	144,800	9.76	15,409,000	1,985,700	7.76	17,377,000	1,832,400	9.48
Other Countries	35,150	5,500	6.39	-	-	-	334,000	39,600	8.43	83,000	8,900	9.33
World Total	18,422,339	2,121,100	8.69	25,479,290	2,508,100	10.16	122,140,000	13,940,300	8.76	156,863,000	14,886,100	10.54
0204232000 Various Lamb Cuts, bone-in, fresh or chilled												
Australia	15,537,670	1,451,900	10.70	8,664,982	753,500	11.50	100,857,000	10,127,200	9.96	97,383,000	8,131,500	11.98
New Zealand	2,917,290	278,300	10.48	2,126,857	173,200	12.28	21,769,000	2,185,100	9.96	23,543,000	1,958,600	12.02
Other Countries	-	-	-	-	(100)	-	355,000	36,000	9.86	173,000	15,700	11.02
World Total	18,454,960	1,730,200	10.67	10,791,839	926,600	11.65	122,981,000	12,348,300	9.96	121,099,000	10,105,800	11.98
0204422010 Lamb Shoulders, bone-in, frozen												
Australia	1,903,880	266,100	7.15	1,908,590	243,100	7.85	11,696,000	1,773,400	6.60	13,800,000	1,805,000	7.65
New Zealand	2,083,966	277,300	7.52	308,138	41,600	7.41	17,257,000	2,487,600	6.94	24,232,000	3,096,600	7.83
Other Countries	111,575	14,600	7.64	183,406	28,700	6.39	569,000	86,800	6.56	675,000	89,800	7.52
World Total	4,099,421	558,000	7.35	2,400,134	313,400	7.66	29,522,000	4,347,800	6.79	38,707,000	4,991,400	7.75
	Sep-21			Sep-22			Jan - Sep 2021			Jan - Sep 2022		
	\$US	Kg	\$/kg.	\$US	Kg	\$/kg.	\$US	Kg	\$/kg.	\$US	Kg	\$/kg.
0204222030 Lamb loins, bone-in, fresh or chilled												
Australia	7,042,749	518,000	13.60	3,972,856	329,700	12.05	83,881,000	6,838,400	12.27	47,139,000	3,609,200	13.06
New Zealand	480,470	39,900	12.04	424,216	30,800	13.77	11,221,000	1,050,800	10.68	4,956,000	387,300	12.80
Other Countries	-	-	-	-	-	-	237,000	16,400	14.45	(1,000)	-	-
World Total	7,523,219	557,900	13.48	4,397,072	360,500	12.20	95,339,000	7,905,600	12.06	52,094,000	3,996,500	13.03
0204422020 Lamb legs, bone-in, frozen												
Australia	1,027,192	124,200	8.27	2,182,511	285,900	7.63	7,990,000	1,142,200	7.00	18,107,000	2,293,800	7.89
New Zealand	576,976	71,300	8.09	894,483	103,400	8.65	7,070,000	951,800	7.43	13,552,000	1,550,700	8.74
Other Countries	11,640	1,500	7.76	-	-	-	363,000	49,000	7.41	503,000	57,800	8.70
World Total	1,615,808	197,000	8.20	3,076,994	389,300	7.90	15,423,000	2,143,000	7.20	32,162,000	3,902,300	8.24
0204300000 Lamb Carcass (full or half), frozen												
Australia	849,978	114,900	7.40	565,088	81,500	6.93	9,587,000	1,400,500	6.85	5,613,000	806,600	6.96
New Zealand	966,169	135,100	7.15	750,746	95,500	7.86	8,107,000	1,174,500	6.90	9,630,000	1,205,000	7.99
Other Countries	317,618	44,700	7.11	724,655	109,400	6.62	4,700,000	701,800	6.70	7,332,000	1,010,300	7.26
World Total	2,133,765	294,700	7.24	2,040,489	286,400	7.12	22,394,000	3,276,800	6.83	22,575,000	3,021,900	7.47
0204222010 Lamb Shoulders, bone-in, fresh or chilled												
Australia	1,548,059	207,300	7.47	1,083,299	148,300	7.30	26,491,000	3,745,500	7.07	12,497,000	1,583,200	7.89
New Zealand	311,742	45,800	6.81	488,411	62,200	7.85	4,186,000	632,400	6.62	2,934,000	366,500	8.01
Other Countries	-	-	-	-	-	-	211,000	35,500	5.94	-	-	-
World Total	1,859,801	253,100	7.35	1,571,710	210,500	7.47	30,888,000	4,413,400	7.00	15,431,000	1,949,700	7.91

Lamb Trade Data Detail

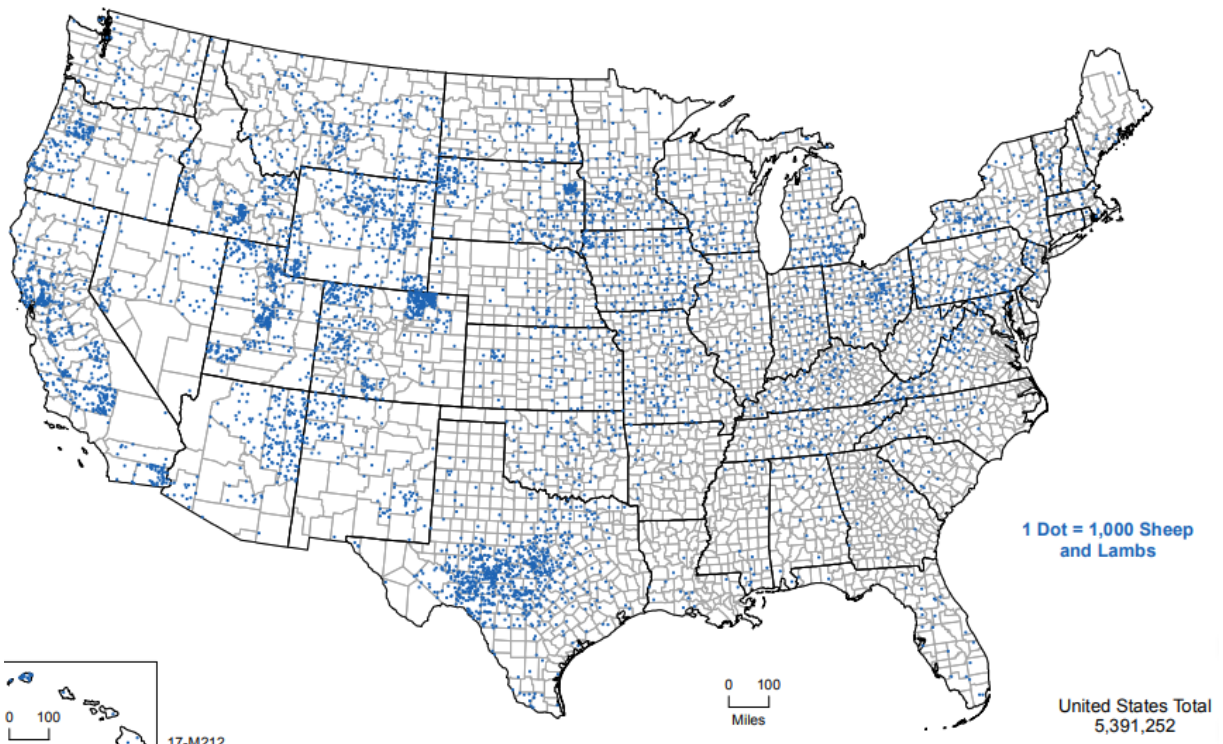
Data source: USDA-FAS. Analysis by Steiner Consulting

	Sep-21			Sep-22			Jan - Sep 2021			Jan - Sep 2022		
	\$US	Kg	\$/kg.	\$US	Kg	\$/kg.	\$US	Kg	\$/kg.	\$US	Kg	\$/kg.
0204222020 Lamb legs, bone-in, fresh or chilled												
Australia	140,975	14,400	9.79	274,725	36,800	7.47	10,208,000	1,124,200	9.08	4,446,000	434,800	10.23
New Zealand	230,682	23,500	9.82	229,069	21,900	10.46	2,870,000	321,400	8.93	1,816,000	172,000	10.56
Other Countries	-	-		-	100	-	263,000	27,900	9.43	-	-	
World Total	371,657	37,900	9.81	503,794	58,800	8.57	13,341,000	1,473,500	9.05	6,262,000	606,800	10.32
0204422030 Lamb loins, bone-in, frozen												
Australia	665,076	65,300	10.18	817,035	76,200	10.72	3,833,000	421,800	9.09	3,363,000	341,900	9.84
New Zealand	235,351	29,100	8.09	355,537	12,600	28.22	596,000	70,900	8.41	2,714,000	161,200	16.84
Other Countries	-	-		-	(100)	-	(1,000)	-		-	-	
World Total	900,427	94,400	9.54	1,172,572	88,700	13.22	4,428,000	492,700	8.99	6,077,000	503,100	12.08
0204100000 Lamb carcass (full or split), fresh or chilled												
Australia	-	-		-	-		-	-		390,000	54,400	7.17
New Zealand	-	-		-	-		3,000	300	10.00	186,000	24,400	7.62
Other Countries	-	-		278,861	56,900	4.90	582,000	153,600	3.79	1,852,000	353,700	5.24
World Total	-	-		278,861	56,900	4.90	585,000	153,900	3.80	2,428,000	432,500	5.61

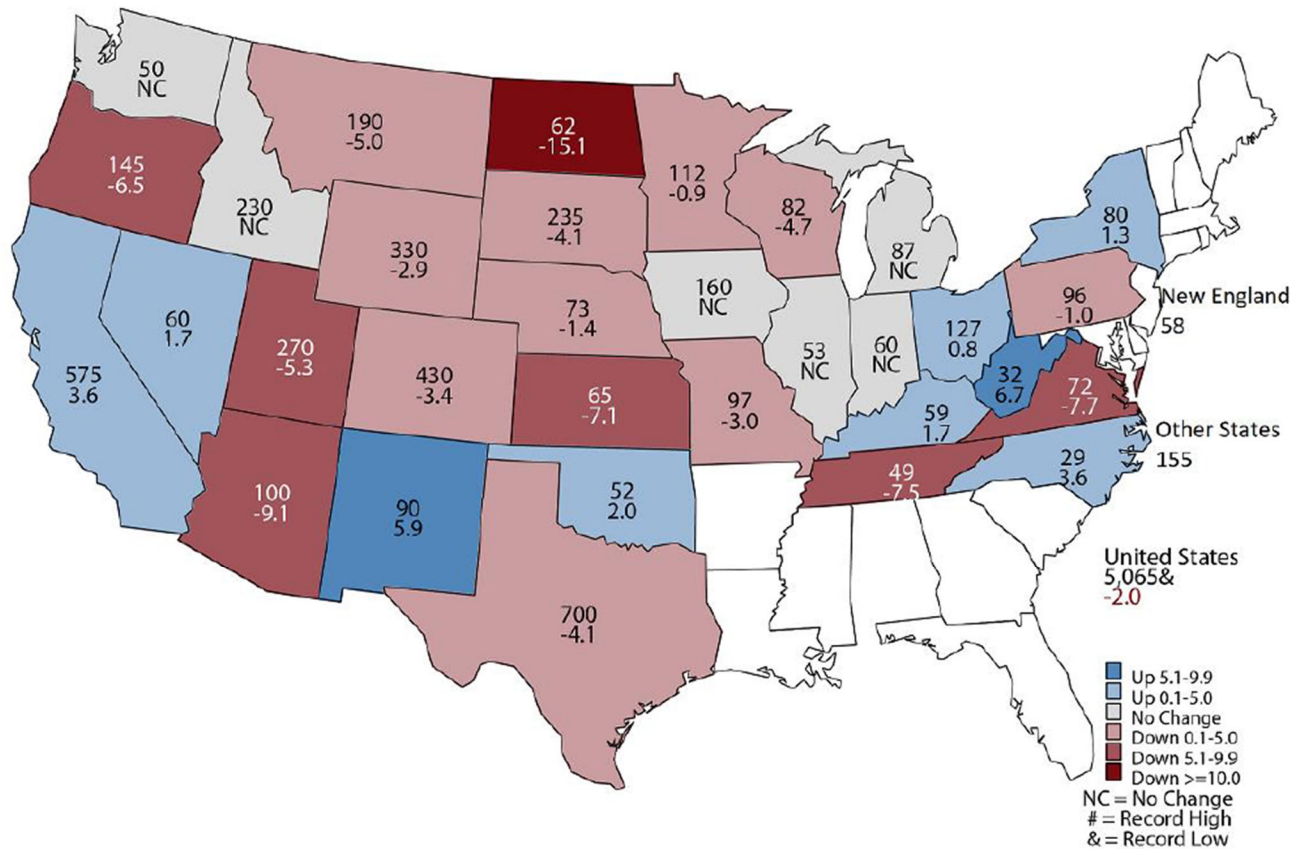


Lamb and Sheep Inventory According to the 2017 Census of Agriculture

Source: USDA-NASS



January 1, 2022 Sheep and Lambs (1,000) Head and Percent Change from Previous Year



The map was created and distributed by the US Department of Agriculture, National Agricultural Statistics Service

