

Monthly US Lamb Market Update

November 2022 Issue

Prepared Exclusively for Meat & Livestock Australia - Sydney

December 2, 2022

USA Domestic Lamb Market - Supply/Demand Situation

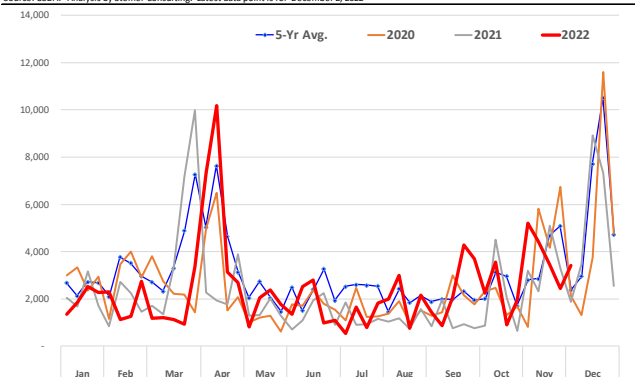
Lamb Holiday Features - The timing of religious holidays makes the y/y comparisons for October/November a bit difficult but there is no question that we should expect a notable improvement in features in December. In the four weeks ending December 2 retail lamb features were 33% lower than the same four week period a year ago and 8% lower than the five year average. Hannukah in 2021 was on November 29, which likely contributed to more features during the month. This year Hannukah is on December 19, closer to Christmas, and we expect to see a bigger surge in features during the week ending Dec. 16 and Dec. 23. We saw something similar play out in 2019 when Hannukah and Christmas were close together. The feature price picture has been mixed so far. During the four week reference period, the biggest price increases have been for loin chops and lamb legs. The average retail price of loin chops during this period was almost \$15/lb., a 46% jump from a year ago but the feature rate for this product was down 21%. The average price of boneless legs was \$9.8/lb, while feature rate was down 31%. It appears retailers shifted some features to semi-boneless leg product, with features up 60% and the average price down 7%. Ground lamb was heavily featured in early November and the average price during the entire four week period was 4% lower.

Production update: Lamb and mutton production has been trending lower in recent months and October was no different. Total slaughter for the month was estimated at 169,100 head, down 19,400 head or 10% from a year ago. Lower supply in Colorado, the top producing state, remains a key factor for the drop in slaughter and output. Colorado lamb and sheep slaughter in October was pegged at just 29,800 head, down 13,200 head or 31% from a year ago. California, the second largest producing state, saw slaughter drop 23% as well. Some of the supply has clearly shifted to Texas, following shifts in processing capacity that we have repeatedly discussed. In October Texas was the second largest lamb producing state in the country, with slaughter at 23,800 head, 8% higher than a year ago. Year to date lamb and sheep slaughter is down almost 175k head or 9% compared to the previous year and given the current trend we do not expect to see much of an improvement in slaughter pace for the next three months.

Cold Storage: Normally we see the inventory of lamb and mutton in cold storage increase through the summer as demand tends to be low and there is interest in accumulating product for year-end holiday needs. The five year average trend in the attached chart illustrates this. But the disruptions of the last couple of years have put some of these seasonal trends aside. In October cold storage inventory declined 9% from the previous month, which is the sort of decline we used to get before and total inventory is down 12% from five year average. Inventories should continue to decline as market shows signs of finally normalizing.

NATIONAL RETAIL LAMB FEATURE REPORT: ACTIVITY INDEX

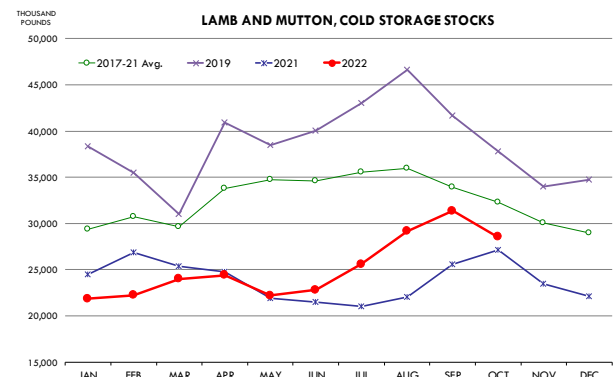
Source: USDA. Analysis by Steiner Consulting. Latest data point is for December 2, 2022



Top 10 States for Lamb/Sheep Slaughter and Production in October

Source: USDA-NASS. Analysis by Steiner Consulting

	Oct-21			Oct-22			Y/Y % Ch.
	Sltr. '1000 hd	Live Wt. lb.	Prod. 1000 lb.	Sltr. '1000 hd	Live Wt. lb.	Prod. 1000 lb.	
1 Colorado	42.9	143	6,114	29.8	154	4,594	-25%
2 California	27.9	138	3,832	21.5	146	3,131	-18%
3 Texas	22.0	115	2,530	23.8	120	2,861	13%
4 New Jersey	16.5	82	1,349	14.8	83	1,234	-9%
5 Pennsylvania	8.5	109	925	9.3	105	972	5%
6 Ohio	5.1	149	754	4.7	157	746	-1%
7 Indiana	7.7	117	906	6.6	111	736	-19%
8 Oregon	4.6	129	595	5.2	136	713	20%
9 New York	5.3	106	559	4.7	102	479	-14%
10 Illinois	5.5	77	425	5.6	83	465	9%
Other	42.5	113	4,794	43.1	109	4,680	-2%
United States	188.5	121	22,783	169.1	122	20,611	-9.5%



Imported Lamb Supply and Price Trends

Imported Supply: The September trade data was released in the first week of November and it helps use close the book on Q3 supply/demand figures. Below is a quick discussion of imports in the broader context of US domestic supply and per capita availability/consumption.

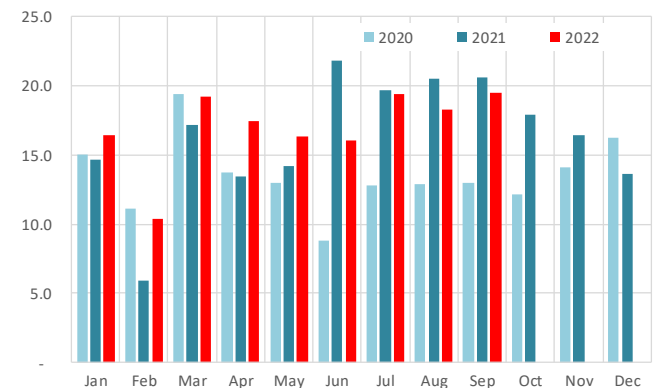
Total lamb imports in September were 23.891 million pounds (carcass wt), 1.1 million pounds higher than the previous month but down 2.1 million pounds or 8.2% compared to a year ago. Imports from Australia were 19.4 million pounds, down 5.5% y/y while imports from New Zealand at 4 million pounds were 26% lower. These are the de facto suppliers of imported lamb, with Chile, the third largest supplier, bringing in just 355k pounds and imports from Canada (24k), Uruguay (k) and Mexico (56k), far below that level. Mutton imports in September were a little over 7 million pounds down 618k pounds or 8% from a year ago. Imports from Australia at 5.5 million pounds were down 1.1 million pounds or 16.7% while imports from New Zealand increased by 683k pounds or 78%.

Combined lamb and mutton imports during Q3 were 92.6 million pounds, down 7.3 million pounds or 7.8% compared to a year ago. Imports last quarter accounted for about 62% of the total available supply (starting inventory + production + imports). Domestic production was 32.7 million pounds, 2.8% higher y/y. At the end of September imports were up about 20% from a year ago, which means that despite the shortfall in production per capita consumption was down even more (i.e. more supply ended up in cold storage). We calculate that per capita disappearance/consumption in Q34 was about 12% lower than the previous year while at the same time the lamb cutout declined 12%, a surefire sign of a slowdown in demand from the torrid pace a year ago.

Imported lamb prices: We have updated the price table and charts on pages 7-8 with the latest data from the USDA Mandatory Price Reporting system. It is interesting to note that even as the price of legs and loin chops at retail was higher in November, wholesale prices have been trending lower. Chilled shortloin price for the week ending November 28 was \$5.85/lb., 19% lower than a year ago and the price of boneless legs at \$5.60 was 5% lower. Possibly because we are seeing more features of semi-boneless legs, the price for that item at \$5.07 was 12% higher than last year. Frozen cap off racks were mostly unquoted but the few items that were quoted were either steady or above year ago levels. Size and country of origin resulted in a wide spread in prices quoted.

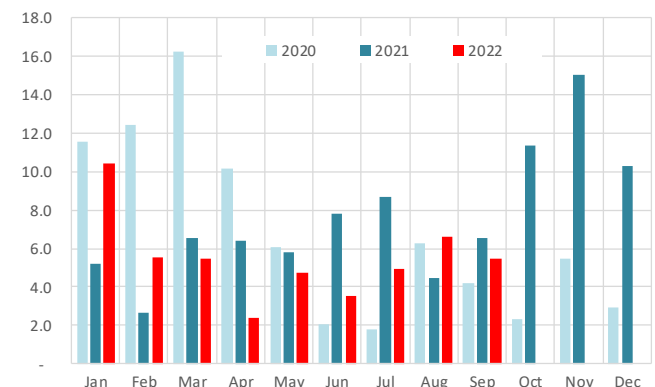
US Lamb Imports from Australia

Carcass Wt. Basis. Million Pounds. Analysis by Steiner Consulting



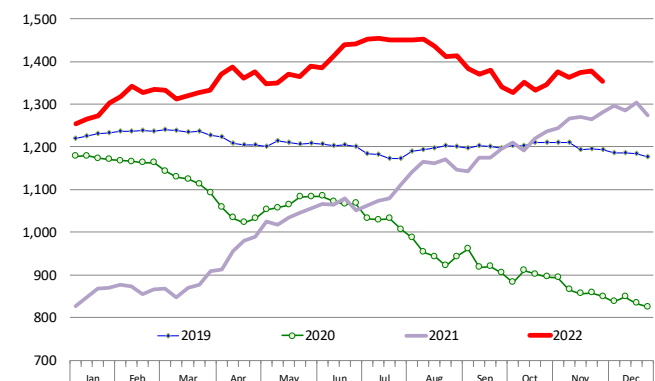
US Mutton Imports from Australia

Carcass Wt. Basis. Million Pounds. Analysis by Steiner Consulting



Australian Lamb Racks, Fresh, Cap-off, 28 oz/up. 4-WK Moving Avg.

Weekly Prices. Source: USDA

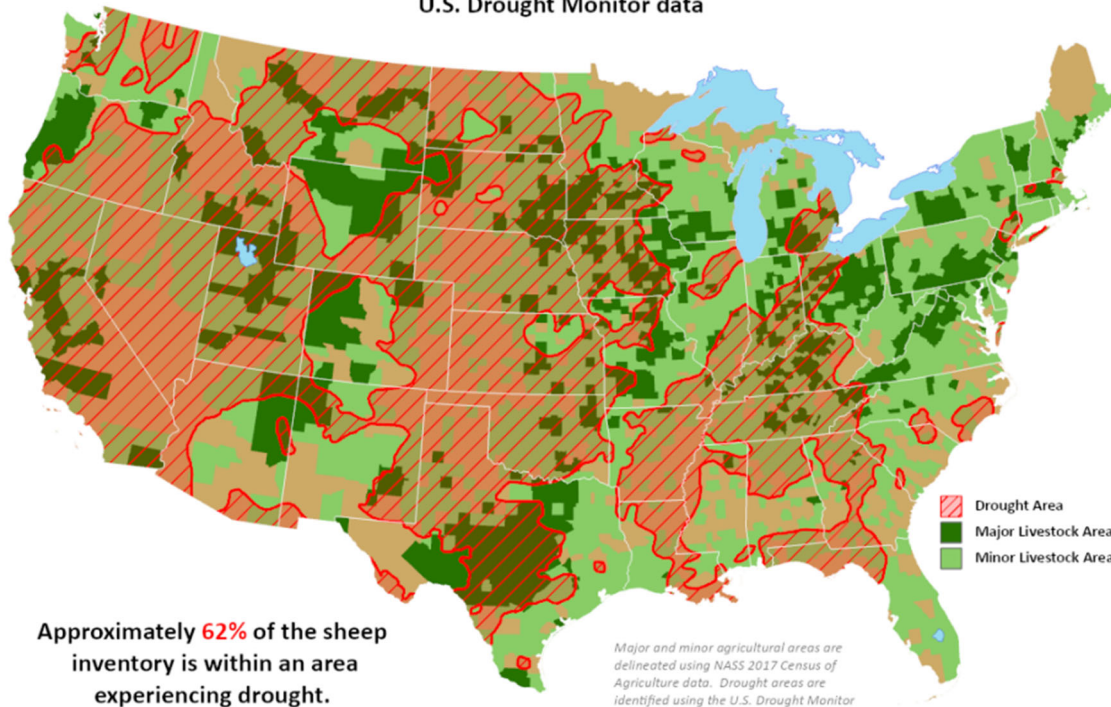




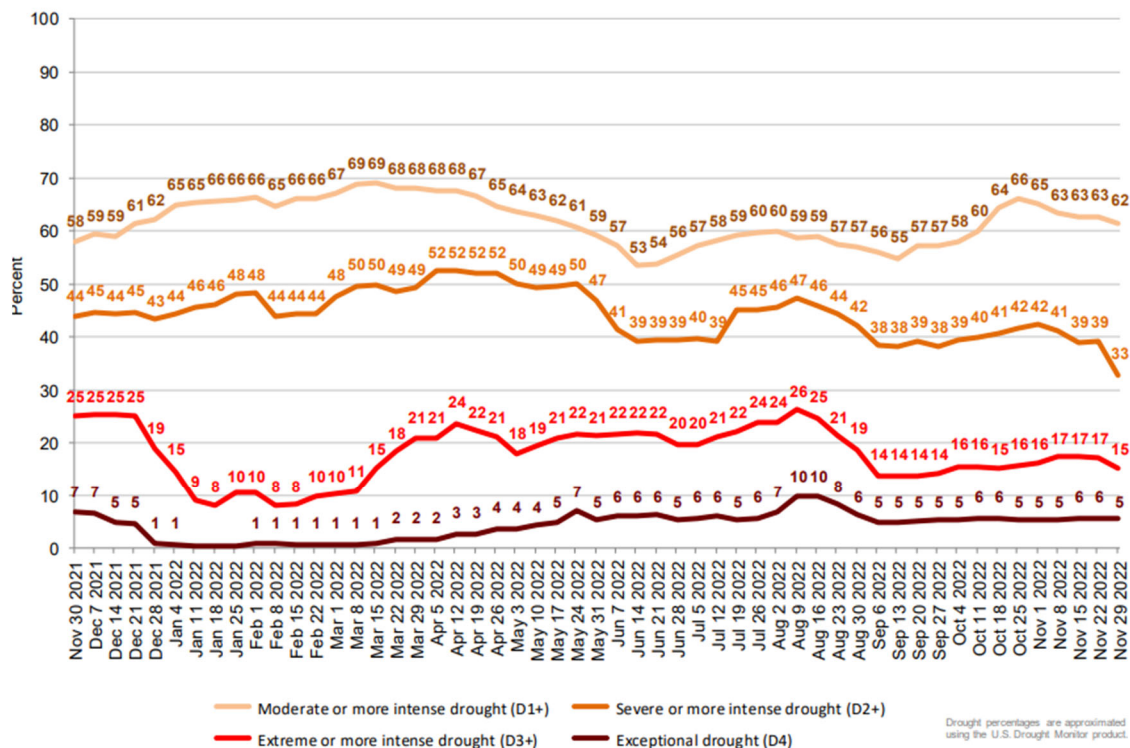
This product was prepared by the
USDA Office of the Chief Economist (OCE)
World Agricultural Outlook Board (WAOB)

Sheep Areas in Drought

Reflects **November 29, 2022**
U.S. Drought Monitor data



Percent of United States Sheep Located in Drought



US Domestic Lamb Cut and Primal Values

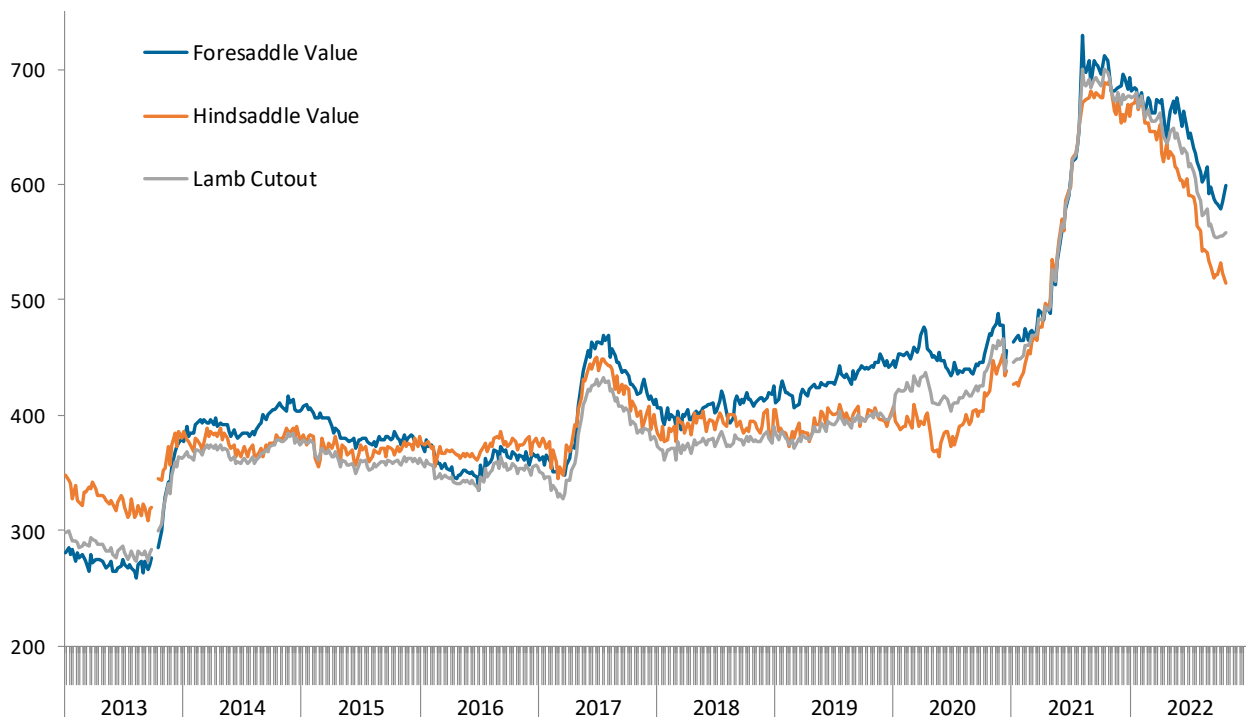
Weekly Prices from USDA. Wt. Average

		11/26/2021	11/18/2022	11/25/2022	w/w	y/y
		US\$/cwt	US\$/cwt	US\$/cwt	% ch.	% ch.
Foresaddle	204 Rack, 8-Rib, Medium	1420.3	1148.8	1197.6	4.3%	-15.7%
	209 Breast	399.6	368.6	388.1	5.3%	-2.9%
	207 Shoulders, Square Cut	497.5	361.4	361.5	0.0%	-27.3%
	210 Foreshank	603.4	641.6	616.0	-4.0%	2.1%
	Neck **	329.1	354.7	369.6	4.2%	12.3%
Foresaddle Value		683.3	577.7	576.8	-0.2%	-15.6%
Hindsaddle	232 Loin, Trimmed, 4x4	1058.5	709.1	708.0	-0.2%	-33.1%
	232E Flank, Untrimmed	336.3	228.3	254.8	11.6%	-24.2%
	233A Leg, Trotter Off	615.1	451.5	455.7	0.9%	-25.9%
Hindsaddle Value		676.2	495.8	504.5	1.8%	-25.4%
Carcass Value		679.8	538.0	541.7	0.7%	-20.3%

** Includes fresh and frozen product. Week to week prices tend to change significantly

Hindsaddle, Foresaddle and Total Lamb Cutout Value

Source: USDA Mandatory Price Reporting System. Analysis by Steiner Consulting (800.526.4612)



Domestic Lamb Cutout Value, USA

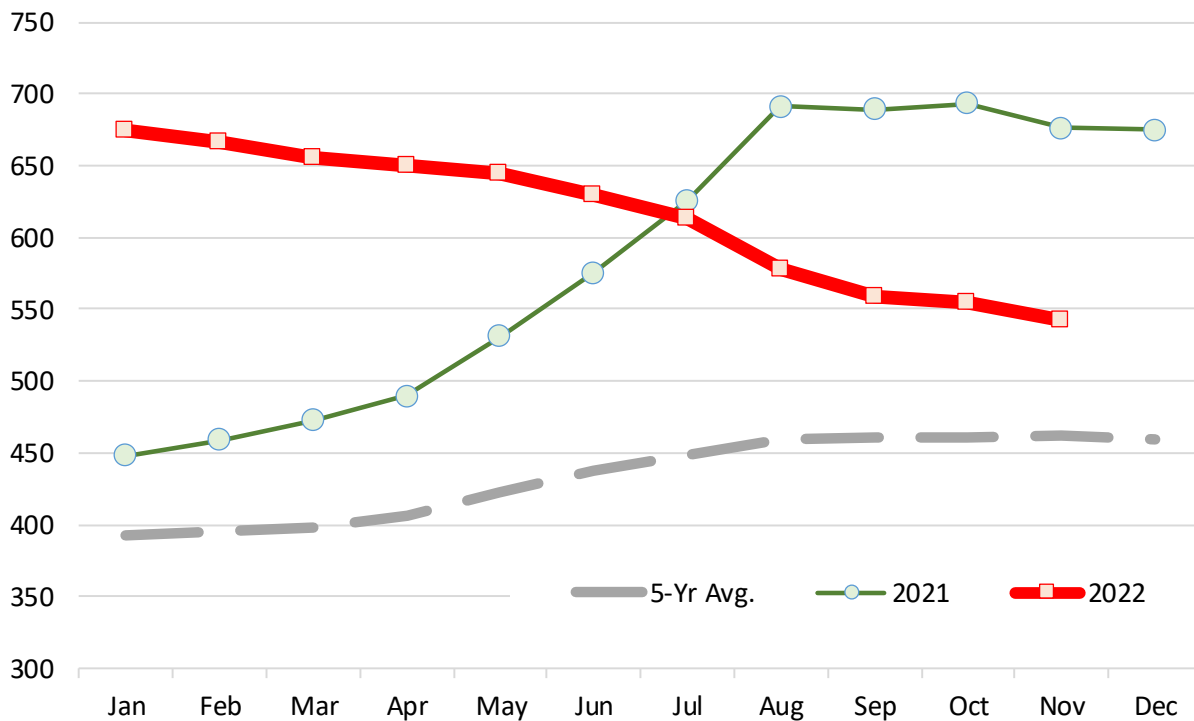
Source: Agricultural Marketin Service, USDA. \$ per 100 lb. Dressed Carcass

	2017	2018	2019	2020	2021	2022	5-Yr Avg.	% ch. vs. Yr Ago	% ch. vs. 5-Yr Avg.
Jan	348.34	368.85	383.43	417.78	447.93	674.75	393.26	50.6%	71.6%
Feb	338.77	370.47	386.61	423.08	459.01	666.76	395.59	45.3%	68.5%
Mar	332.97	369.88	382.21	429.97	472.79	656.04	397.57	38.8%	65.0%
Apr	355.50	373.25	380.42	430.76	489.76	649.56	405.94	32.6%	60.0%
May	400.16	377.43	389.48	417.20	531.44	645.15	423.14	21.4%	52.5%
Jun	425.44	382.01	391.81	412.29	575.84	629.63	437.48	9.3%	43.9%
Jul	428.96	381.66	397.03	412.33	625.93	613.89	449.18	-1.9%	36.7%
Aug	421.48	375.87	393.39	417.76	691.20	578.40	459.94	-16.3%	25.8%
Sep	414.16	378.23	396.62	423.22	689.51	558.19	460.35	-19.0%	21.3%
Oct	395.31	379.26	398.15	439.53	693.44	554.46	461.14	-20.0%	20.2%
Nov	386.74	379.39	407.49	461.31	676.35	542.81	462.26	-19.7%	17.4%
Dec	388.59	383.36	397.78	450.78	674.88		459.08		

Note: Monthly Cutout Value Calculated Using Weekly Data

USA Domestic Lamb Cutout Value

Monthly Avg. Price; Source: USDA



Slaughter Lamb Price, Sioux Falls, SD Basis

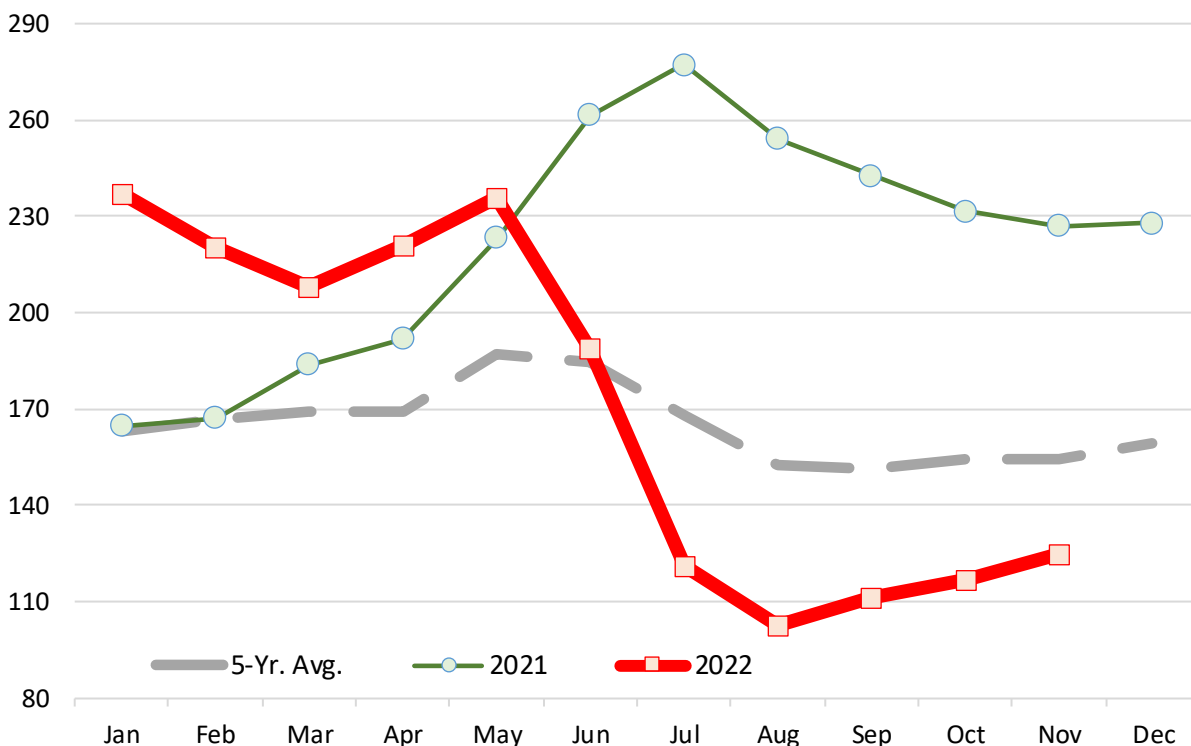
Monthly Average Prices, 100-150 lb. Woolled and Shorn, Choice & Prime 2-3 . \$ per 100 lb.

	2017	2018	2019	2020	2021	2022	5-Yr. Avg.	% ch. vs. Yr Ago.	% ch. vs. 5-Yr Avg.
Jan	141.7	142.1	135.8	157.2	164.9	237.0	163.1	43.7%	45.3%
Feb	144.6	154.1	142.6	170.6	167.4	220.6	166.6	31.8%	32.4%
Mar	158.1	153.6	150.4	161.9	184.0	207.9	169.3	13.0%	22.8%
Apr	177.9	156.0	162.2	107.8	192.0	220.8	169.5	15.0%	30.3%
May	209.9	161.6	165.4	127.5	223.3	235.7	187.2	5.6%	25.9%
Jun	200.6	166.6	157.4	133.0	261.5	189.0	184.7	-27.7%	2.3%
Jul	177.7	146.3	152.0	134.7	277.2	121.1	168.2	-56.3%	-28.0%
Aug	156.3	132.4	151.5	119.8	254.2	102.7	152.8	-59.6%	-32.8%
Sep	144.0	129.3	147.9	133.3	242.9	111.6	151.5	-54.1%	-26.4%
Oct	134.3	130.4	148.4	165.3	231.6	116.9	154.5	-49.5%	-24.3%
Nov	131.4	129.1	150.3	165.7	227.1	124.7	154.7	-45.1%	-19.4%
Dec	126.8	133.0	151.7	156.5	228.0		159.2		

Source: USDA

Slaughter Lamb Price, Sioux Falls, SD Basis

Monthly Average Prices, 100-150 lb. Woolled and Shorn, Choice & Prime 2-3 . \$ per 100 lb.



Imported Lamb Price Summary

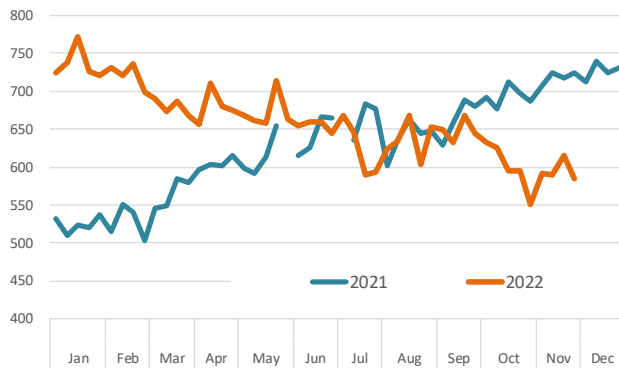
Source: USDA Agricultural Marketing Service, Mandatory Price Reporting

	2021 Volume	2021 Wt. Avg. \$	2021 Implied Value	Nov 29, 2021	Nov 21, 2022	Nov 28, 2022	% ch. vs. wk Ago	% ch. vs. Year Ago
Fresh/Chilled								
	Pounds	\$/lb.	Total \$					
AUS Shortloin, 1-Rib, 0x0	27,268,498	\$ 6.31	\$ 172,112,184	\$ 7.25	\$ 6.16	\$ 5.85	-5.0%	-19.3%
AUS Leg, bnls	18,231,276	\$ 5.16	\$ 93,994,274	\$ 5.87	\$ 5.29	\$ 5.60	5.9%	-4.6%
AUS Shoulder, Square-cut	16,288,026	\$ 3.77	\$ 61,481,331	\$ 3.97	\$ 3.80	\$ 4.00	5.2%	0.6%
AUS Rack, FR, Cap-off, 28 oz/up	6,394,396	\$ 10.82	\$ 69,212,972	\$ 13.30	\$ 13.38	\$ 13.32	-0.4%	0.2%
AUS Shortloin, 1-Rib, 1x1	3,235,858	\$ 6.34	\$ 20,517,997	\$ 6.87	\$ 5.58	\$ 5.55	-0.5%	-19.2%
AUS Rack, FR, Cap-off, 20-24 oz	3,216,613	\$ 10.72	\$ 34,483,147	\$ 13.03		\$ 13.52	n/a	3.8%
AUS Rack, FR, Cap-off, 24-28 oz	2,772,092	\$ 11.24	\$ 31,168,599	\$ 13.10	\$ 11.92	\$ 11.88	-0.3%	-9.3%
AUS Leg, semi bnls	2,759,946	\$ 4.87	\$ 13,450,899	\$ 4.54	\$ 4.85	\$ 5.07	4.7%	11.6%
AUS Foreshank, VP	1,517,537	\$ 3.90	\$ 5,919,832	\$ 4.24	\$ 4.04	\$ 4.24	5.2%	0.2%
AUS Leg, Long	1,004,768	\$ 5.41	\$ 5,431,190	\$ 5.59	\$ 6.20	\$ 5.45	-12.1%	-2.4%
AUS Tenderloin	15,594	\$ 13.21	\$ 206,009				n/a	
AUS Shoulder, Square-cut, bnls	5,112	\$ 6.75	\$ 34,506				n/a	
Subtotal	82,689,010	\$ 6.00	\$ 496,421,403	\$ 6.86	\$ 5.76	\$ 6.29	9.2%	-8.3%
Frozen								
NZ Rack, FR, Cap-off, 16-20 oz	4,770,114	\$ 9.16	\$ 43,700,043	\$ 12.24	\$ 13.26	\$ 13.18	-0.5%	7.7%
AUS Foreshank, LP	4,658,742	\$ 3.14	\$ 14,635,452	\$ 4.02	\$ 3.74	\$ 3.88	3.8%	-3.4%
AUS Leg, Long	3,680,271	\$ 4.75	\$ 17,488,259	\$ 5.34	\$ 4.40	\$ 4.44	0.8%	-16.9%
AUS Leg, bnls	2,669,822	\$ 5.09	\$ 13,584,282	\$ 5.48	\$ 4.35	\$ 4.29	-1.4%	-21.6%
NZ Rack, FR, Cap-off, 12-16 oz	2,289,743	\$ 9.87	\$ 22,607,266	\$ 13.83	\$ 13.20	\$ 13.10	-0.7%	-5.3%
AUS Hindshank, LP	2,001,445	\$ 3.48	\$ 6,958,122	\$ 4.70	\$ 3.59	\$ 3.97	10.5%	-15.5%
NZ Rack, FR, Cap-off, 20 oz/up	1,746,942	\$ 9.32	\$ 16,279,515	\$ 11.37	\$ 13.18	\$ 13.11	-0.6%	15.3%
AUS Shoulder, Square-cut, bnls	1,675,062	\$ 4.47	\$ 7,491,761		\$ 5.30	\$ 5.16	-2.6%	
AUS Shoulder, Square-cut	1,631,086	\$ 3.21	\$ 5,233,086		\$ 3.02	\$ 2.96	-2.1%	
AUS Leg, bnls, shank-off	1,471,658	\$ 4.95	\$ 7,286,605	\$ 5.04	\$ 4.62	\$ 4.34	-6.2%	-13.9%
AUS Rack, FR, Cap-off, 28 oz/up	427,391	\$ 11.00	\$ 4,702,295	\$ 13.35	\$ 13.98	\$ 13.52	-3.3%	1.3%
AUS Rack, FR, Cap-off, 24-28 oz	367,383	\$ 10.18	\$ 3,739,478		\$ 13.62	\$ 14.63	7.4%	
AUS Rack, FR, Cap-off, 20-24 oz	359,604	\$ 9.81	\$ 3,527,955		\$ 13.36	\$ 13.58	1.6%	
AUS Rack, FR, Cap-off, 20 oz/dn	67,595	\$ 8.77	\$ 592,817		\$ 12.67	\$ 13.70	8.2%	
NZ Rack, FR, Cap-off, 12 oz/dn	63,781	\$ 9.73	\$ 620,613				n/a	
AUS Tenderloin	29,583	\$ 11.41	\$ 337,643		\$ 11.42	\$ 9.56	-16.3%	
AUS Hindshank, VP	18,188	\$ 4.19	\$ 76,182		\$ 4.74		n/a	
Subtotal	27,910,222	\$ 6.05	\$ 168,785,191	\$ 6.65	\$ 7.39	\$ 7.40	0.1%	11.3%

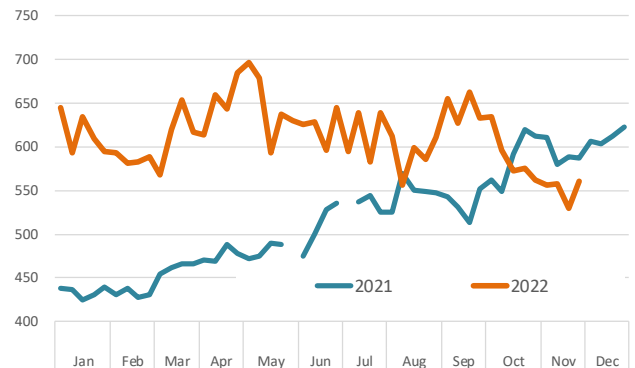
Please note that the prices, volume and sales value reported above represents only subset of total US lamb imports. It only reflects the data reported through the Mandatory Price Reporting System. It is only for negotiated sales, no formula sales. Trade from smaller importers and traders is not included in the summary above. Data that does not meet the confidentiality guidelines also is not included in the above table.

Shortloin, 1-Rib, 0x0, Australian, Chilled

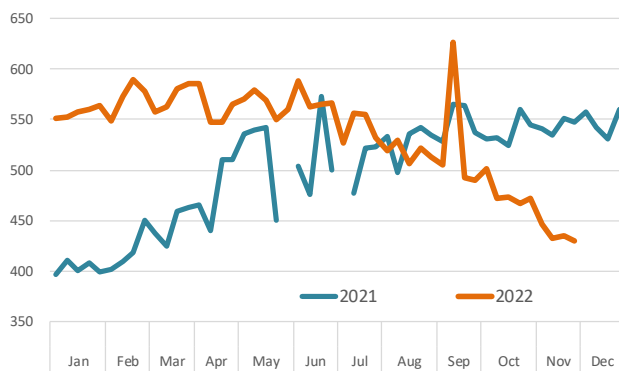
Source: USDA-AMS. Weighted Average Weekly Price in US\$/cwt.

**Leg, bnls, Australian, Chilled**

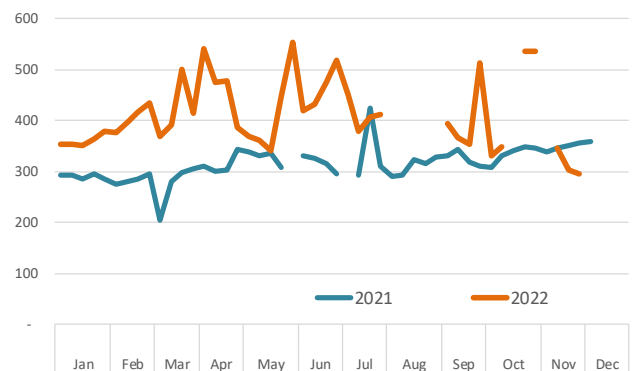
Source: USDA-AMS. Weighted Average Weekly Price in US\$/cwt.

**Leg, bnls, Australian, Frozen**

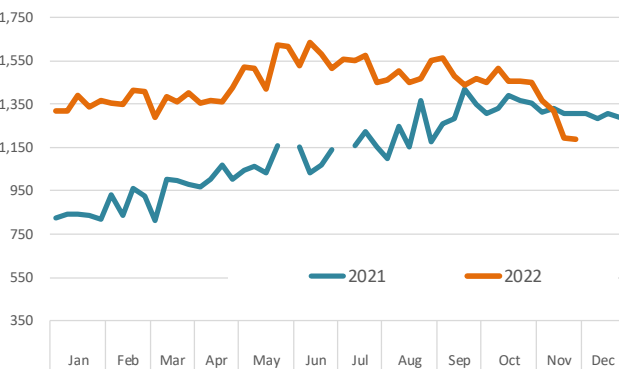
Source: USDA-AMS. Weighted Average Weekly Price in US\$/cwt.

**Shoulder Cut, Australia, Frozen**

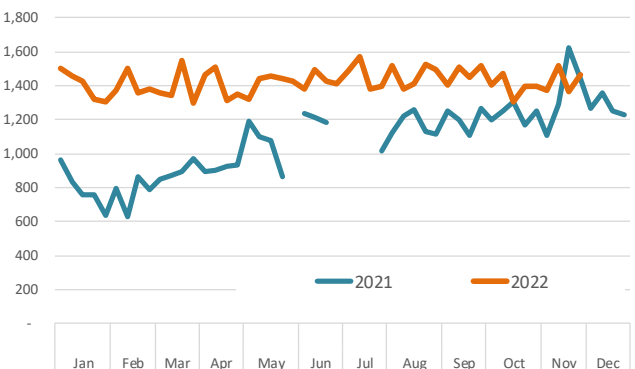
Source: USDA-AMS. Weighted Average Weekly Price in US\$/cwt.

**Racks, Cap-off, 24-28oz, Australian, Chilled**

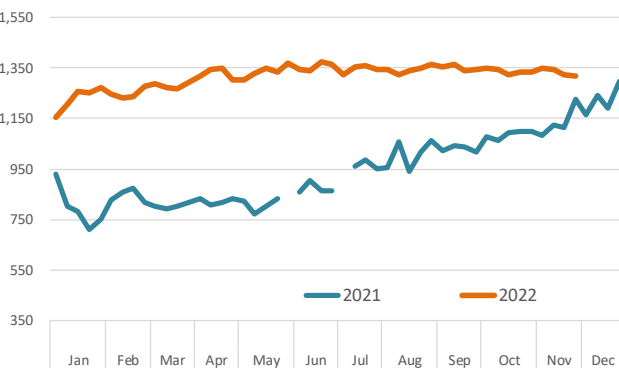
Source: USDA-AMS. Weighted Average Weekly Price in US\$/cwt.

**Racks, Cap-off, 24-28oz, Australian, Frozen**

Source: USDA-AMS. Weighted Average Weekly Price in US\$/cwt.

**Racks, Cap-off, 16-20oz, New Zealand, Frozen**

Source: USDA-AMS. Weighted Average Weekly Price in US\$/cwt.



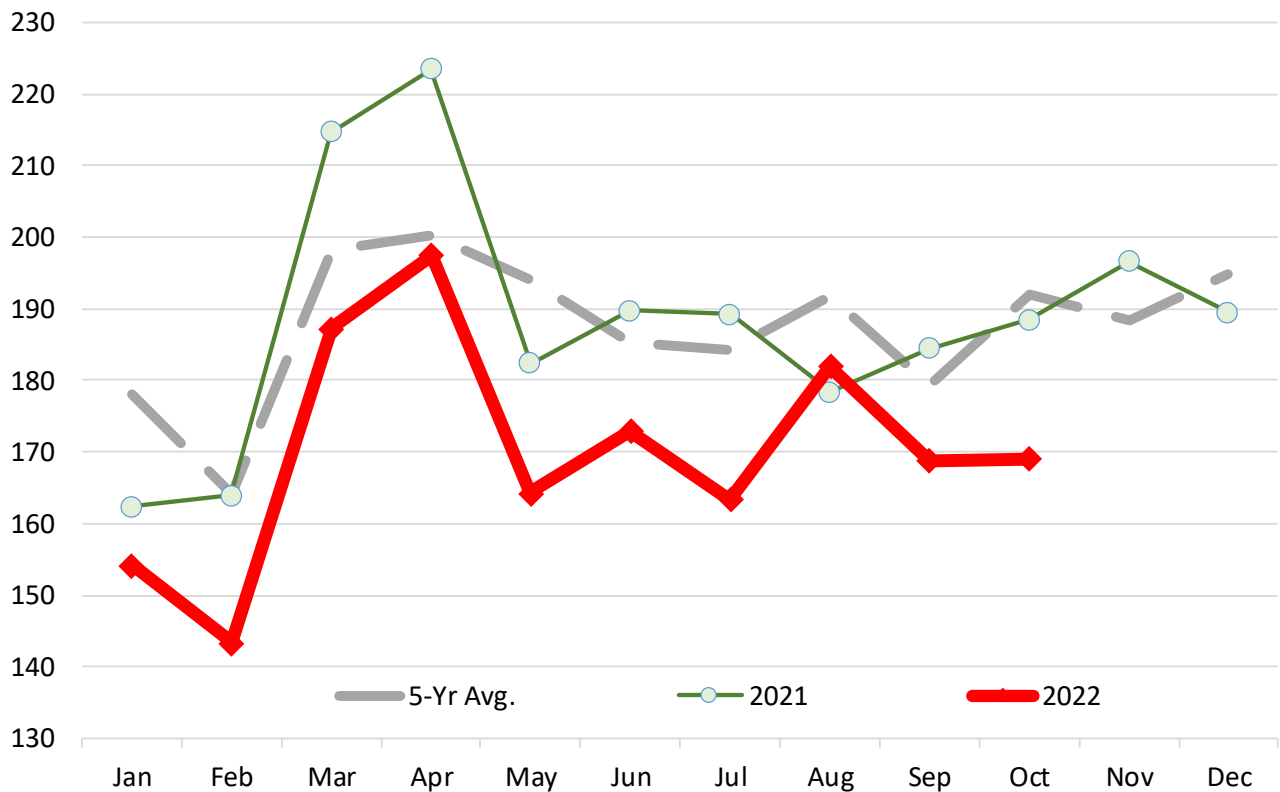
Lamb & Sheep Slaughter. Monthly. '000 Head

	2017	2018	2019	2020	2021	2022	5-Yr Avg.	% ch Yr Ago	% ch 5-Yr Avg.
Jan	177.4	180.6	187.2	183.3	162.4	154.2	178.2	-5.0%	-13.5%
Feb	159.4	164.3	168.7	163.8	163.9	143.4	164.0	-12.5%	-12.6%
Mar	196.3	201.5	190.4	187.7	214.7	187.3	198.1	-12.8%	-5.5%
Apr	179.7	181.5	235.7	181.2	223.5	197.5	200.3	-11.6%	-1.4%
May	180.8	201.8	210.0	195.4	182.4	164.3	194.1	-9.9%	-15.3%
Jun	187.7	180.6	175.4	193.2	189.8	172.9	185.3	-8.9%	-6.7%
Jul	166.9	180.0	188.6	196.2	189.3	163.4	184.2	-13.7%	-11.3%
Aug	194.6	205.4	202.9	178.0	178.4	182.0	191.9	2.0%	-5.1%
Sep	176.4	172.2	179.3	185.0	184.4	168.8	179.5	-8.5%	-5.9%
Oct	183.5	199.9	206.0	182.5	188.5	169.1	192.1	-10.3%	-12.0%
Nov	187.4	195.3	181.0	181.3	196.6		188.3		
Dec	188.1	201.8	196.5	197.8	189.5		194.7		

Source: USDA

Lamb & Sheep Slaughter. Monthly. '000 Head

Monthly Data. Source: USDA



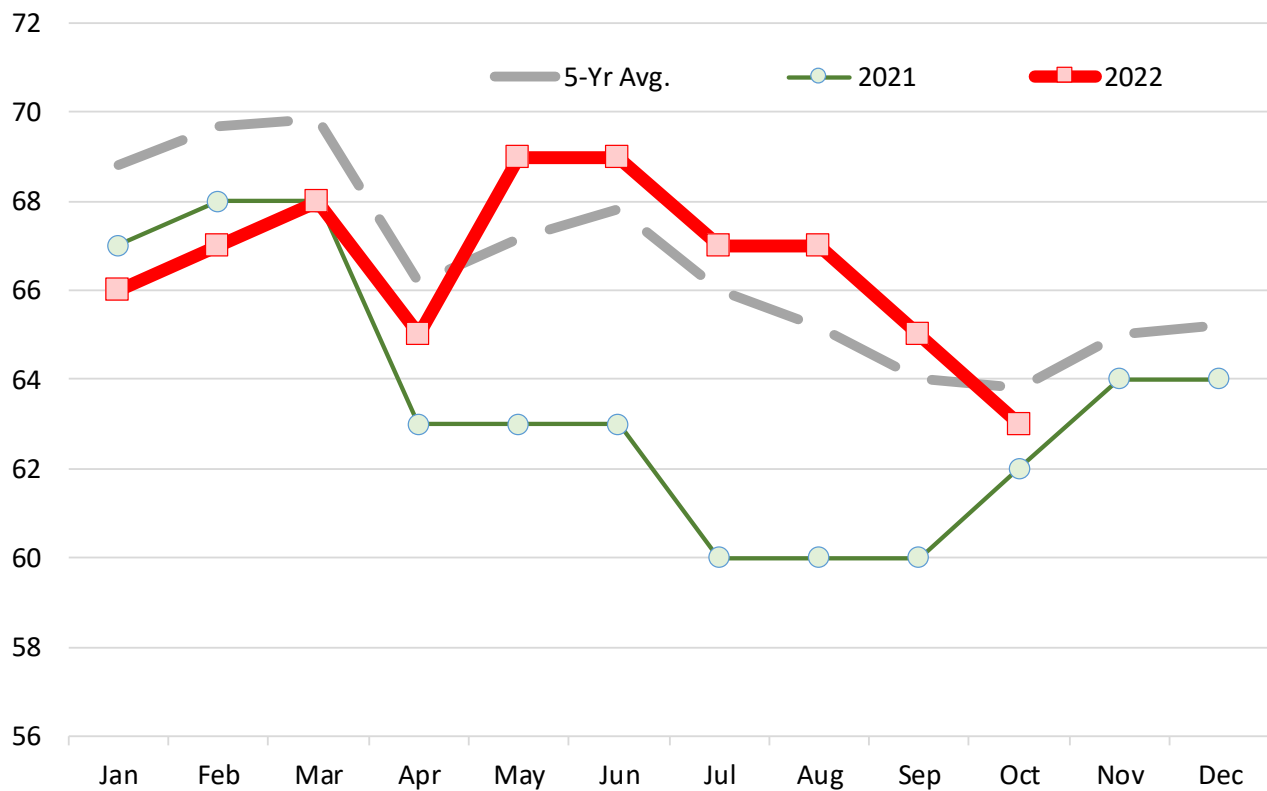
Lamb and Yearling Dressed Weights. Monthly. Avg. Pounds per Carcass

	2017	2018	2019	2020	2021	2022	5-Yr Avg.	% ch Yr Ago	% ch 5-Yr Avg.
Jan	71.00	73.00	69.00	67.00	67.00	66.00	68.83	-1.5%	-4.1%
Feb	72.00	74.00	69.00	68.00	68.00	67.00	69.67	-1.5%	-3.8%
Mar	72.00	72.00	71.00	68.00	68.00	68.00	69.83	0.0%	-2.6%
Apr	67.00	71.00	67.00	64.00	63.00	65.00	66.17	3.2%	-1.8%
May	67.00	70.00	66.00	68.00	63.00	69.00	67.17	9.5%	2.7%
Jun	68.00	71.00	68.00	68.00	63.00	69.00	67.83	9.5%	1.7%
Jul	68.00	70.00	66.00	65.00	60.00	67.00	66.00	11.7%	1.5%
Aug	67.00	68.00	65.00	64.00	60.00	67.00	65.17	11.7%	2.8%
Sep	66.00	69.00	63.00	61.00	60.00	65.00	64.00	8.3%	1.6%
Oct	66.00	67.00	64.00	61.00	62.00	63.00	63.83	1.6%	-1.3%
Nov	68.00	68.00	64.00	61.00	64.00		65.00		
Dec	69.00	67.00	63.00	63.00	64.00		65.20		

Source: USDA

Lamb and Yearling Dressed Weights. Monthly. Avg. Pounds per Carcass

Monthly Data. Source: USDA

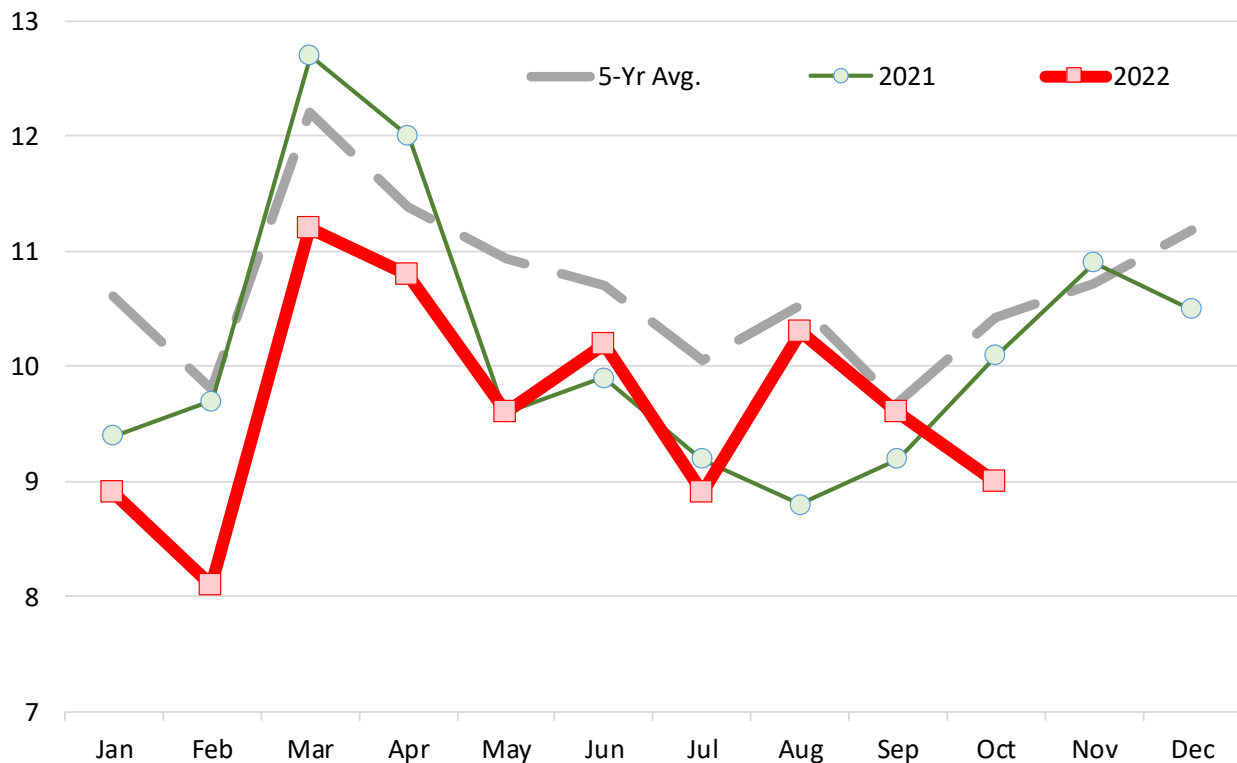


Lamb Yearling Production. Monthly. Carcass Wt. Basis. Million Lb.

	2017	2018	2019	2020	2021	2022	5-Yr Avg.	% ch Yr Ago	% ch 5-Yr Avg.
Jan	11.4	11.7	11.4	10.9	9.4	8.9	10.6	-5.3%	-16.2%
Feb	10.4	10.8	10.1	9.7	9.7	8.1	9.8	-16.5%	-17.3%
Mar	12.7	13.3	12.1	11.3	12.7	11.2	12.2	-11.8%	-8.3%
Apr	10.4	11.5	13.7	9.9	12.0	10.8	11.4	-10.0%	-5.1%
May	10.5	12.5	12.1	11.3	9.6	9.6	10.9	0.0%	-12.2%
Jun	11.3	11.2	10.3	11.3	9.9	10.2	10.7	3.0%	-4.7%
Jul	9.9	11.0	10.7	10.6	9.2	8.9	10.1	-3.3%	-11.4%
Aug	11.6	11.9	11.1	9.5	8.8	10.3	10.5	17.0%	-2.2%
Sep	10.1	10.1	9.7	9.4	9.2	9.6	9.7	4.3%	-0.9%
Oct	10.9	11.9	11.5	9.2	10.1	9.0	10.4	-10.9%	-13.7%
Nov	11.4	11.8	10.2	9.3	10.9		10.7		
Dec	11.8	11.9	11.0	10.7	10.5		11.2		

*Source: USDA***Lamb Yearling Production. Monthly. Carcass Wt. Basis. Million Lb.**

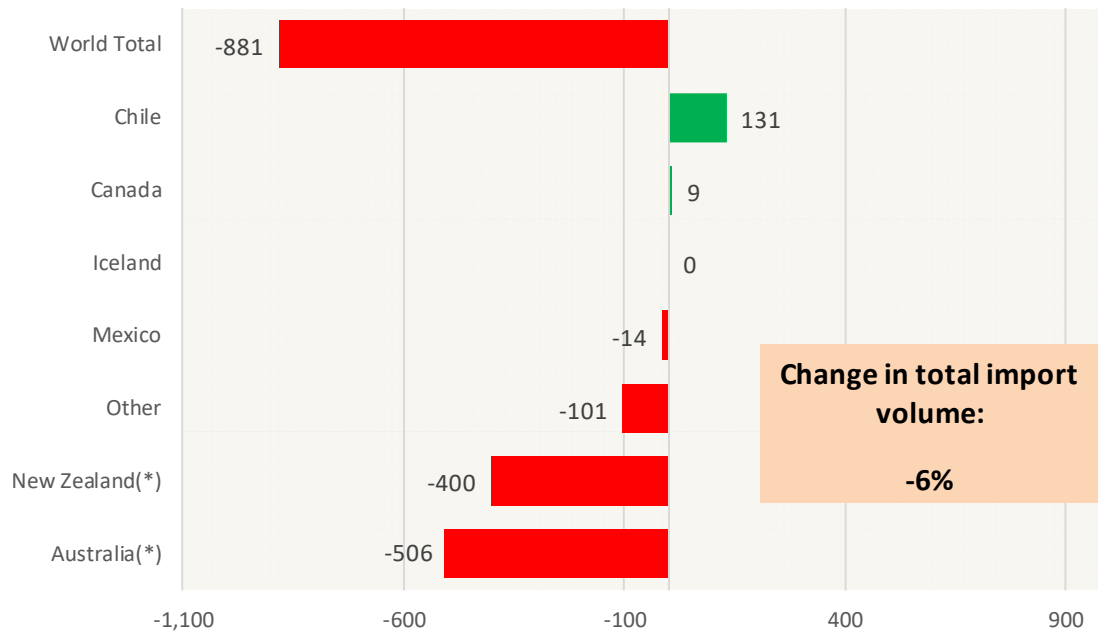
Monthly Data. Source: USDA



Y/Y Ch. in Sep. 22 vs. Sep. 21 US Mutton, Goat, Lamb Imports

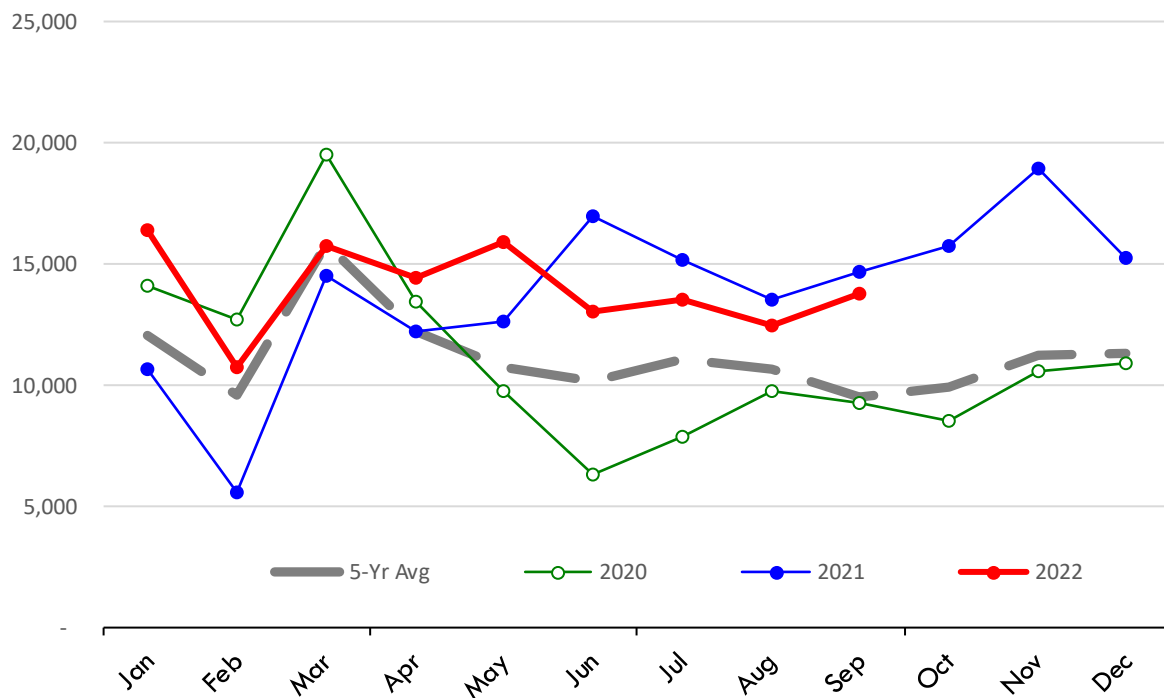
Source: USDA/FAS

Units: Metric Tons



Quantity of US Imports of Fr/Frz Mutton, Goat, Lamb: World Total

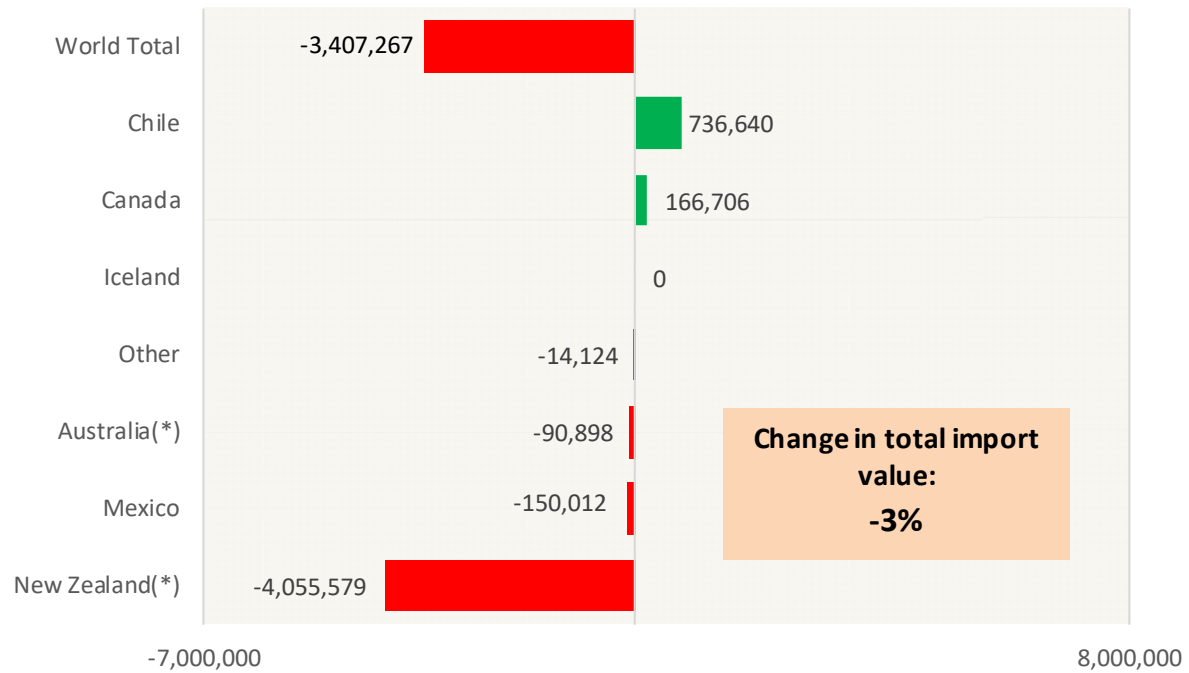
Source: USDA/FAS. Units: Metric Ton. Analysis by: Steiner Consulting (800.526.4612)



Y/Y Ch. in Sep. 22 vs. Sep 21 US Mutton, Goat, Lamb Import Value (\$)

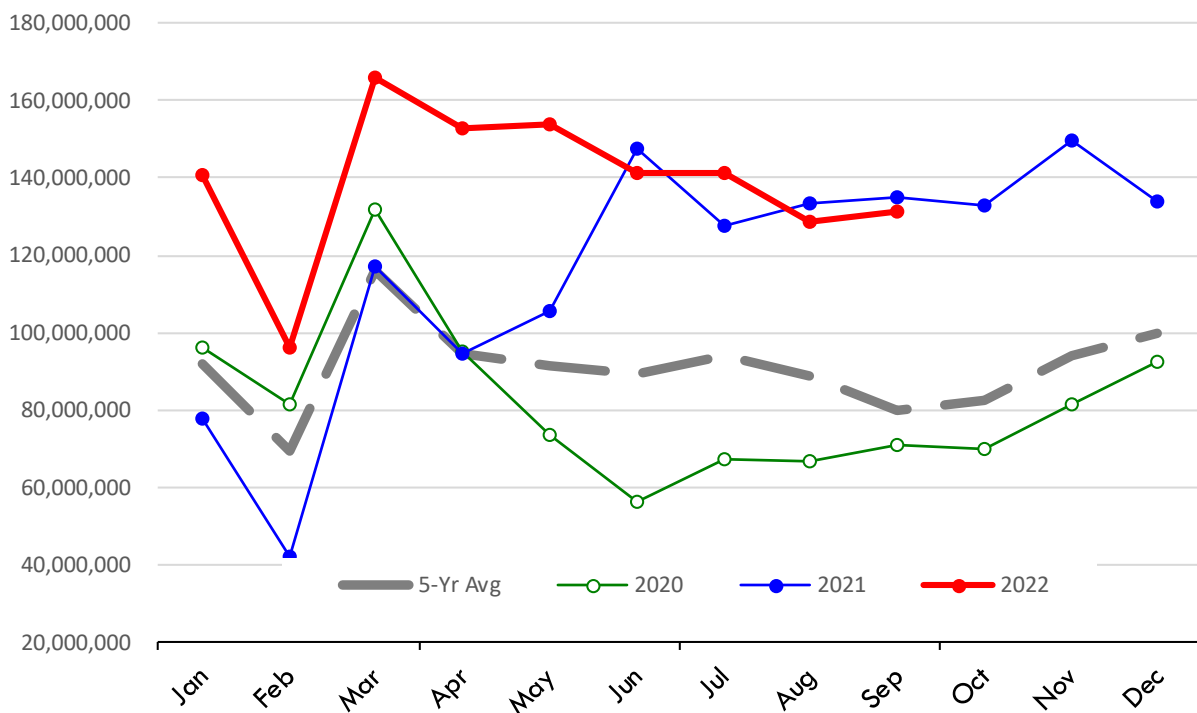
Source: USDA/FAS

Units: US Dollars



\$ Value of US Imports of Fr/Frz Mutton, Goat, Lamb: World Total

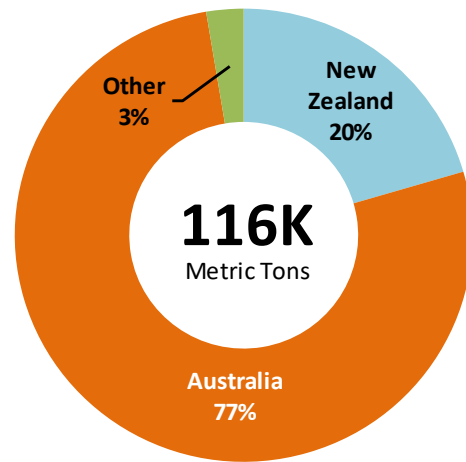
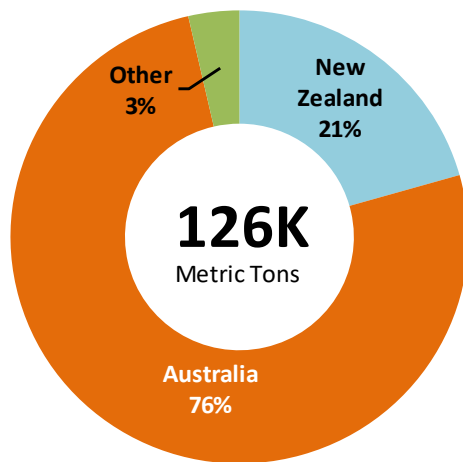
Source: USDA/FAS. Units: US Dollars. Analysis by: Steiner Consulting (800.526.4612)



TOP US LAMB IMPORT MARKETS IN **2022** TOP US LAMB IMPORT MARKETS IN **2021**

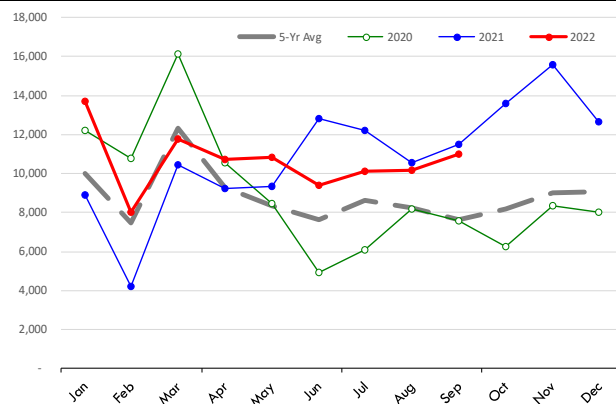
Total Volume and Country Shares for Period Jan - Sep 2022, MT

Total Volume and Country Shares for Period Jan - Sep 2021, MT



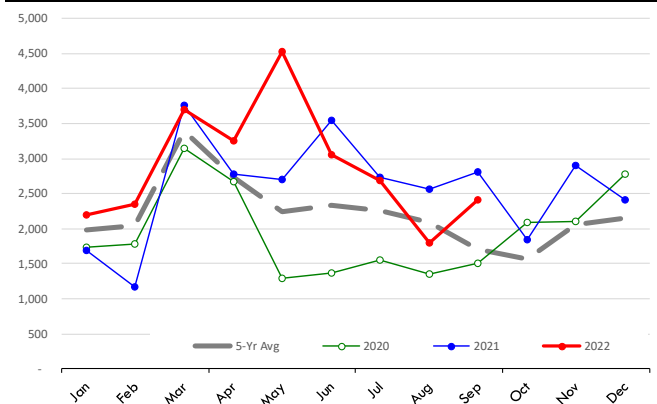
Quantity of US Imports of Fr/Frz Mutton, Goat, Lamb: Australia(*)

Source: USDA/FAS. Units: Metric Ton. Analysis by: Steiner Consulting (800.526.4612)



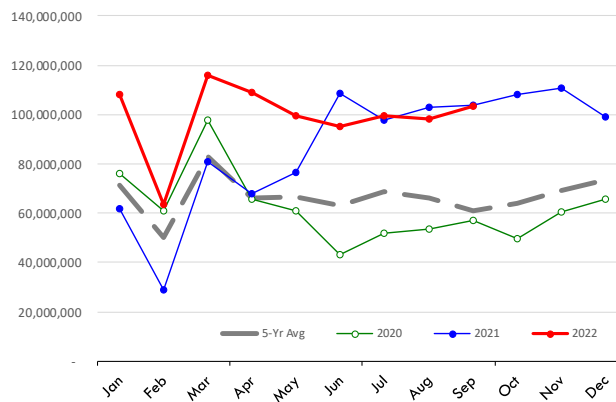
Quantity of US Imports of Fr/Frz Mutton, Goat, Lamb: New Zealand(*)

Source: USDA/FAS. Units: Metric Ton. Analysis by: Steiner Consulting (800.526.4612)



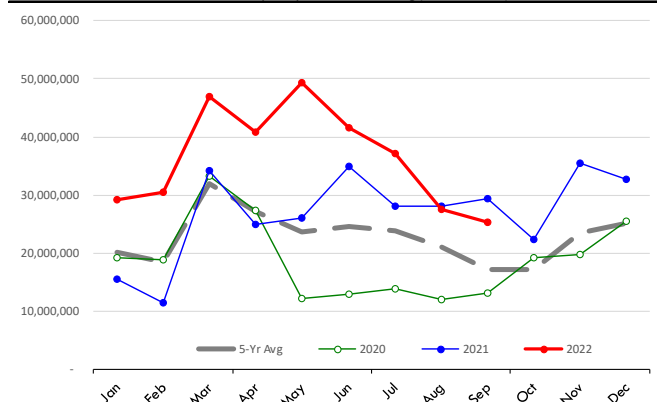
\$ Value of US Imports of Fr/Frz Mutton, Goat, Lamb: Australia(*)

Source: USDA/FAS. Units: US Dollars. Analysis by: Steiner Consulting (800.526.4612)



\$ Value of US Imports of Fr/Frz Mutton, Goat, Lamb: New Zealand(*)

Source: USDA/FAS. Units: US Dollars. Analysis by: Steiner Consulting (800.526.4612)



Lamb Trade Data Detail

Data source: USDA-FAS. Analysis by Steiner Consulting

Summary of US Lamb Imports by Country. Kilogram (shipped wt.) and USD

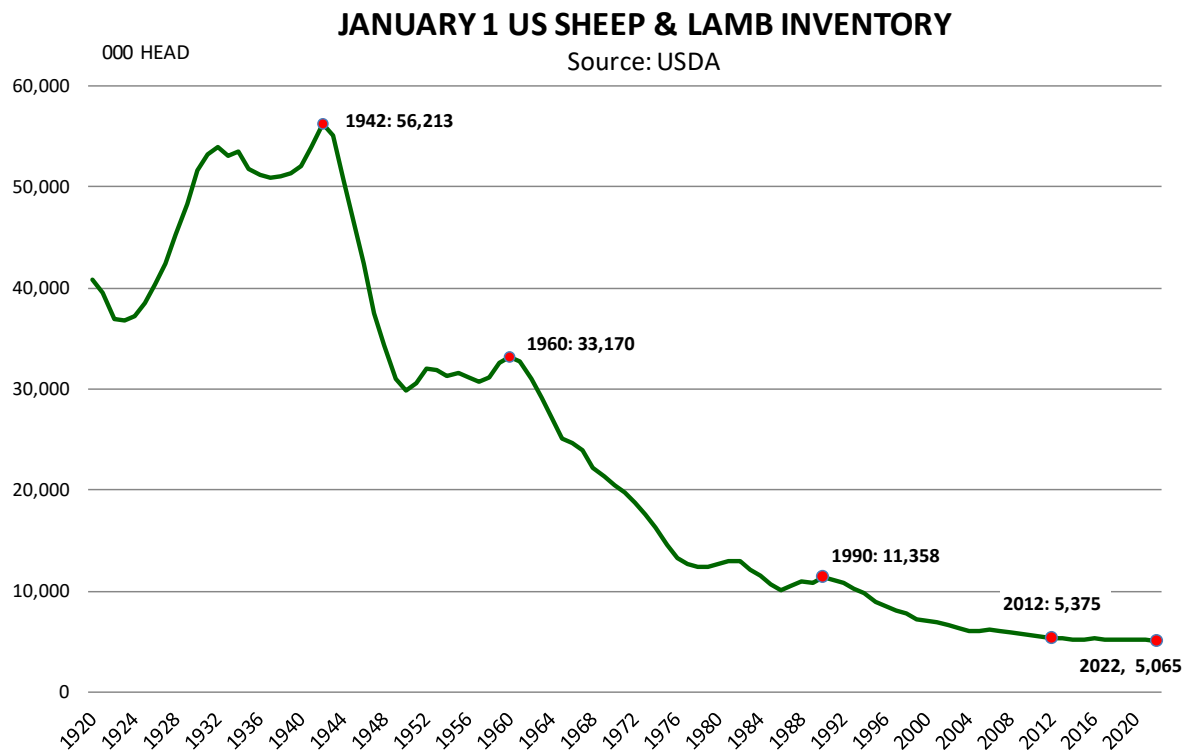
Data source: USDA-FAS and Census. Analysis by Steiner Consulting

	Sep-21			Sep-22			Jan - Sep 2021			Jan - Sep 2022		
	\$US	Kg	\$/kg.	\$US	Kg	\$/kg.	\$US	Kg	\$/kg.	\$US	Kg	\$/kg.
0204222090 Various Lamb Cuts, bone-in, fresh or chilled												
Australia	30,127,597	1,826,000	16.50	24,943,841	1,402,100	17.79	175,013,000	10,235,200	17.10	264,423,000	15,690,000	16.85
New Zealand	4,544,143	265,400	17.12	4,747,460	267,500	17.75	41,587,000	2,532,900	16.42	60,941,000	3,096,200	19.68
Other Countries	24,209	1,600	15.13	276,794	17,800	15.55	1,053,000	71,400	14.75	1,590,000	101,900	15.60
World Total	34,695,949	2,093,000	16.58	29,968,095	1,687,400	17.76	217,653,000	12,839,500	16.95	326,954,000	18,888,100	17.31
0204422090 Various Lamb Cuts, bone-in, frozen												
Australia	11,318,280	1,174,900	9.63	16,088,119	1,465,500	10.98	56,378,000	6,856,600	8.22	109,902,000	10,501,900	10.46
New Zealand	10,430,849	695,400	15.00	11,845,802	679,300	17.44	81,844,000	6,302,100	12.99	152,283,000	8,411,600	18.10
Other Countries	15,229	1,800	8.46	114,251	19,300	5.92	571,000	57,300	9.97	4,050,000	369,400	10.96
World Total	21,764,358	1,872,100	11.63	28,048,172	2,164,100	12.96	138,793,000	13,216,000	10.50	266,235,000	19,282,900	13.81
0204432000 Various Lamb Cuts, boneless, frozen												
Australia	16,349,163	1,840,900	8.88	24,066,617	2,363,300	10.18	106,397,000	11,915,000	8.93	139,403,000	13,044,800	10.69
New Zealand	2,038,026	274,700	7.42	1,412,673	144,800	9.76	15,409,000	1,985,700	7.76	17,377,000	1,832,400	9.48
Other Countries	35,150	5,500	6.39	-	-	-	334,000	39,600	8.43	83,000	8,900	9.33
World Total	18,422,339	2,121,100	8.69	25,479,290	2,508,100	10.16	122,140,000	13,940,300	8.76	156,863,000	14,886,100	10.54
0204232000 Various Lamb Cuts, bone-in, fresh or chilled												
Australia	15,537,670	1,451,900	10.70	8,664,982	753,500	11.50	100,857,000	10,127,200	9.96	97,383,000	8,131,500	11.98
New Zealand	2,917,290	278,300	10.48	2,126,857	173,200	12.28	21,769,000	2,185,100	9.96	23,543,000	1,958,600	12.02
Other Countries	-	-	-	-	(100)	-	355,000	36,000	9.86	173,000	15,700	11.02
World Total	18,454,960	1,730,200	10.67	10,791,839	926,600	11.65	122,981,000	12,348,300	9.96	121,099,000	10,105,800	11.98
0204422010 Lamb Shoulders, bone-in, frozen												
Australia	1,903,880	266,100	7.15	1,908,590	243,100	7.85	11,696,000	1,773,400	6.60	13,800,000	1,805,000	7.65
New Zealand	2,083,966	277,300	7.52	308,138	41,600	7.41	17,257,000	2,487,600	6.94	24,232,000	3,096,600	7.83
Other Countries	111,575	14,600	7.64	183,406	28,700	6.39	569,000	86,800	6.56	675,000	89,800	7.52
World Total	4,099,421	558,000	7.35	2,400,134	313,400	7.66	29,522,000	4,347,800	6.79	38,707,000	4,991,400	7.75
	Sep-21			Sep-22			Jan - Sep 2021			Jan - Sep 2022		
	\$US	Kg	\$/kg.	\$US	Kg	\$/kg.	\$US	Kg	\$/kg.	\$US	Kg	\$/kg.
0204222030 Lamb loins, bone-in, fresh or chilled												
Australia	7,042,749	518,000	13.60	3,972,856	329,700	12.05	83,881,000	6,838,400	12.27	47,139,000	3,609,200	13.06
New Zealand	480,470	39,900	12.04	424,216	30,800	13.77	11,221,000	1,050,800	10.68	4,956,000	387,300	12.80
Other Countries	-	-	-	-	-	-	237,000	16,400	14.45	(1,000)	-	-
World Total	7,523,219	557,900	13.48	4,397,072	360,500	12.20	95,339,000	7,905,600	12.06	52,094,000	3,996,500	13.03
0204422020 Lamb legs, bone-in, frozen												
Australia	1,027,192	124,200	8.27	2,182,511	285,900	7.63	7,990,000	1,142,200	7.00	18,107,000	2,293,800	7.89
New Zealand	576,976	71,300	8.09	894,483	103,400	8.65	7,070,000	951,800	7.43	13,552,000	1,550,700	8.74
Other Countries	11,640	1,500	7.76	-	-	-	363,000	49,000	7.41	503,000	57,800	8.70
World Total	1,615,808	197,000	8.20	3,076,994	389,300	7.90	15,423,000	2,143,000	7.20	32,162,000	3,902,300	8.24
0204300000 Lamb Carcass (full or half), frozen												
Australia	849,978	114,900	7.40	565,088	81,500	6.93	9,587,000	1,400,500	6.85	5,613,000	806,600	6.96
New Zealand	966,169	135,100	7.15	750,746	95,500	7.86	8,107,000	1,174,500	6.90	9,630,000	1,205,000	7.99
Other Countries	317,618	44,700	7.11	724,655	109,400	6.62	4,700,000	701,800	6.70	7,332,000	1,010,300	7.26
World Total	2,133,765	294,700	7.24	2,040,489	286,400	7.12	22,394,000	3,276,800	6.83	22,575,000	3,021,900	7.47
0204222010 Lamb Shoulders, bone-in, fresh or chilled												
Australia	1,548,059	207,300	7.47	1,083,299	148,300	7.30	26,491,000	3,745,500	7.07	12,497,000	1,583,200	7.89
New Zealand	311,742	45,800	6.81	488,411	62,200	7.85	4,186,000	632,400	6.62	2,934,000	366,500	8.01
Other Countries	-	-	-	-	-	-	211,000	35,500	5.94	-	-	-
World Total	1,859,801	253,100	7.35	1,571,710	210,500	7.47	30,888,000	4,413,400	7.00	15,431,000	1,949,700	7.91

Lamb Trade Data Detail

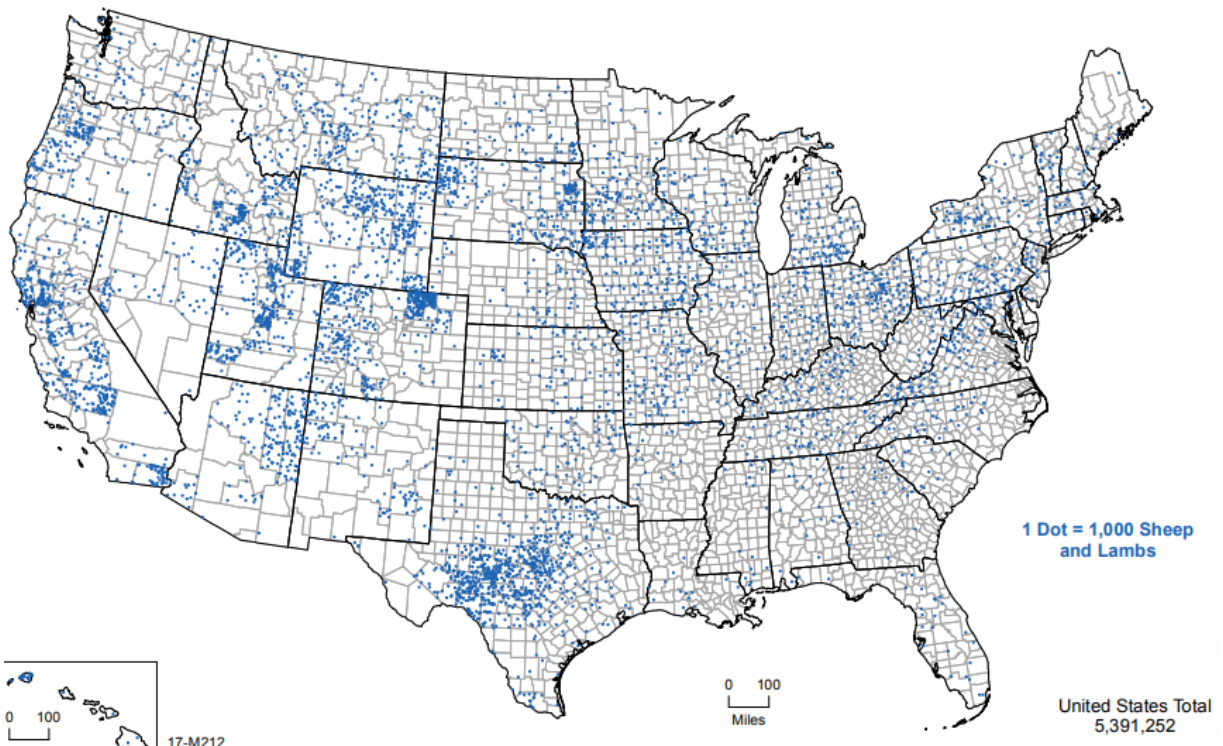
Data source: USDA-FAS. Analysis by Steiner Consulting

	Sep-21			Sep-22			Jan - Sep 2021			Jan - Sep 2022		
	\$US	Kg	\$/kg.	\$US	Kg	\$/kg.	\$US	Kg	\$/kg.	\$US	Kg	\$/kg.
0204222020 Lamb legs, bone-in, fresh or chilled												
Australia	140,975	14,400	9.79	274,725	36,800	7.47	10,208,000	1,124,200	9.08	4,446,000	434,800	10.23
New Zealand	230,682	23,500	9.82	229,069	21,900	10.46	2,870,000	321,400	8.93	1,816,000	172,000	10.56
Other Countries	-	-		-	100	-	263,000	27,900	9.43	-	-	
World Total	371,657	37,900	9.81	503,794	58,800	8.57	13,341,000	1,473,500	9.05	6,262,000	606,800	10.32
0204422030 Lamb loins, bone-in, frozen												
Australia	665,076	65,300	10.18	817,035	76,200	10.72	3,833,000	421,800	9.09	3,363,000	341,900	9.84
New Zealand	235,351	29,100	8.09	355,537	12,600	28.22	596,000	70,900	8.41	2,714,000	161,200	16.84
Other Countries	-	-		-	(100)	-	(1,000)	-		-	-	
World Total	900,427	94,400	9.54	1,172,572	88,700	13.22	4,428,000	492,700	8.99	6,077,000	503,100	12.08
0204100000 Lamb carcass (full or split), fresh or chilled												
Australia	-	-		-	-		-	-		390,000	54,400	7.17
New Zealand	-	-		-	-		3,000	300	10.00	186,000	24,400	7.62
Other Countries	-	-		278,861	56,900	4.90	582,000	153,600	3.79	1,852,000	353,700	5.24
World Total	-	-		278,861	56,900	4.90	585,000	153,900	3.80	2,428,000	432,500	5.61

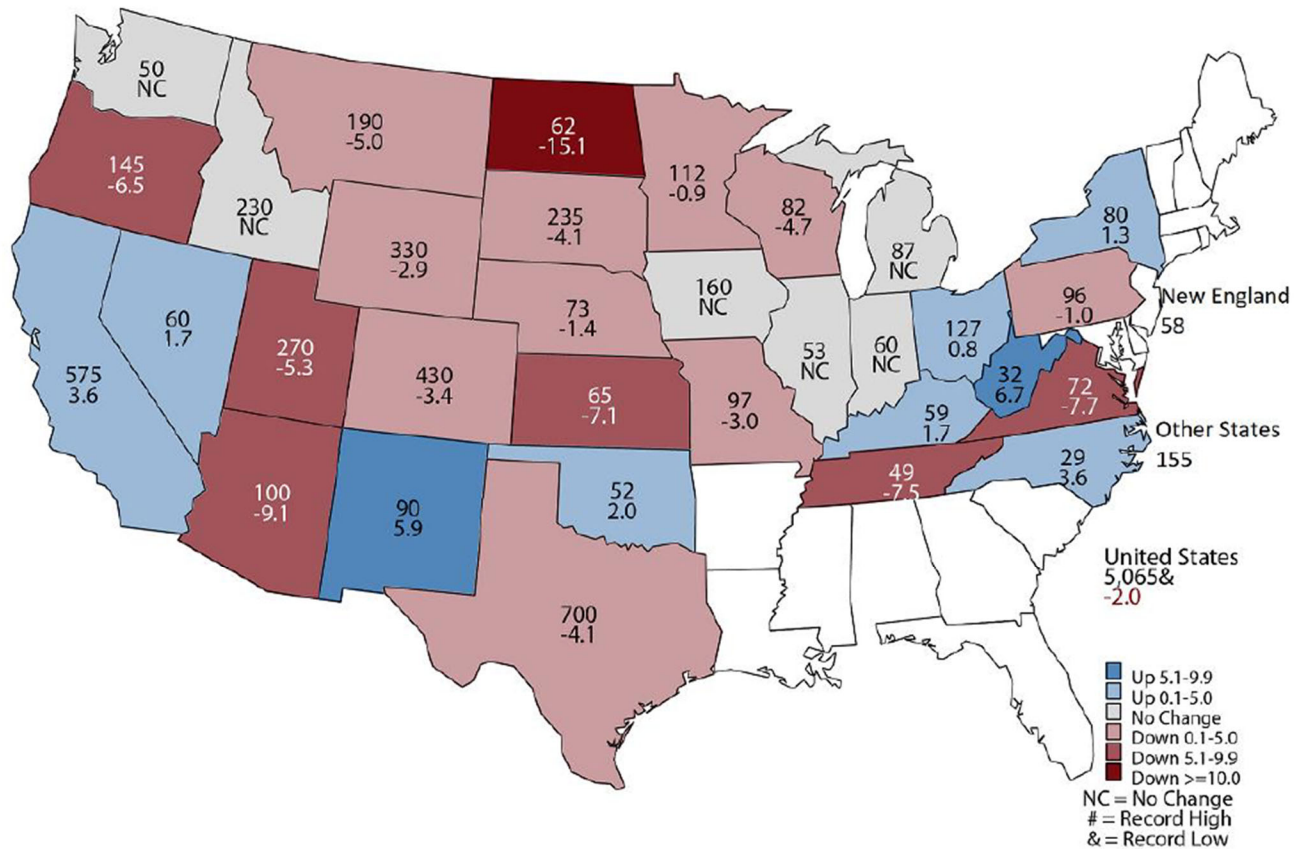


Lamb and Sheep Inventory According to the 2017 Census of Agriculture

Source: USDA-NASS



January 1, 2022 Sheep and Lambs (1,000) Head and Percent Change from Previous Year



The map was created and distributed by the US Department of Agriculture, National Agricultural Statistics Service

