

European Union (UK inclusive)

12-months ending August

Volume (tonnes swt)	Chilled		Frozen		Total	
	12-months ending August	Y-O-Y % chg.	12-months ending August	Y-O-Y % chg.	12-months ending August	Y-O-Y % chg.
Total	3,709	4	10,111	7	13,820	6
Lamb	3,709	4	7,056	28	10,765	19
Mutton	-	-100	3,054	-23	3,054	-23

Calendar year-to-August

Chilled		Frozen		Total	
2020 YTD	Y-O-Y % chg.	2020 YTD	Y-O-Y % chg.	2020 YTD	Y-O-Y % chg.
2,143	19	6,175	23	8,318	22
2,143	19	4,433	22	6,577	21
-	-	1,741	25	1,741	25

Month of August

Chilled			Frozen			Total		
2020 August	M-O-M % chg.	Y-O-Y % chg.	2020 August	M-O-M % chg.	Y-O-Y % chg.	2020 August	M-O-M % chg.	Y-O-Y % chg.
159	-4	96	896	29	120	1,055	23	116
159	-4	96	664	35	99	823	25	99
-	-	-	232	14	212	232	14	212

United Kingdom

12-months ending August

Volume (tonnes swt)	Chilled		Frozen		Total	
	12-months ending August	Y-O-Y % chg.	12-months ending August	Y-O-Y % chg.	12-months ending August	Y-O-Y % chg.
Total	1,780	26	7,239	9	9,019	12
Lamb	1,780	26	4,367	21	6,147	23
Mutton	-	-	2,873	-6	2,873	-6

Calendar year-to-August

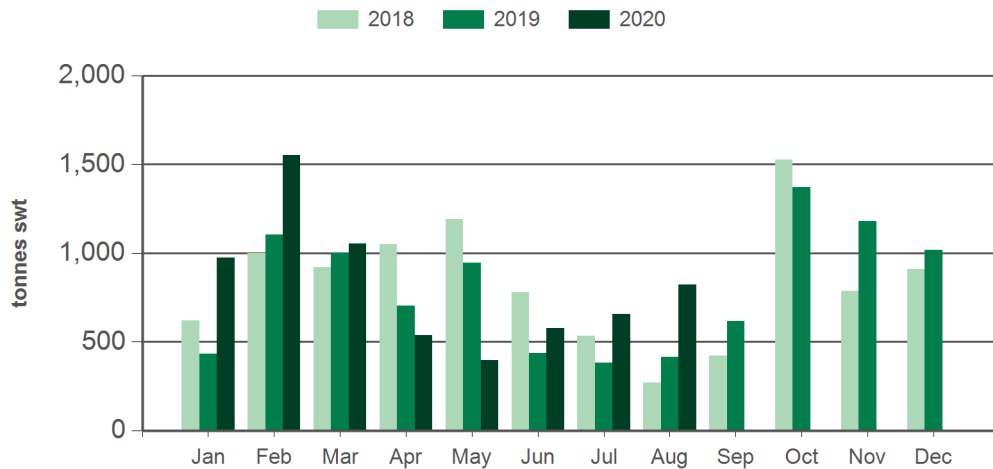
Chilled		Frozen		Total	
2020 YTD	Y-O-Y % chg.	2020 YTD	Y-O-Y % chg.	2020 YTD	Y-O-Y % chg.
1,359	44	4,127	25	5,486	29
1,359	44	2,413	5	3,772	16
-	-	1,714	69	1,714	69

Month of August

Chilled			Frozen			Total		
2020 August	M-O-M % chg.	Y-O-Y % chg.	2020 August	M-O-M % chg.	Y-O-Y % chg.	2020 August	M-O-M % chg.	Y-O-Y % chg.
131	-16	107	488	13	36	620	5	47
131	-16	107	257	5	-10	388	-3	12
-	-	-	232	22	212	232	22	212

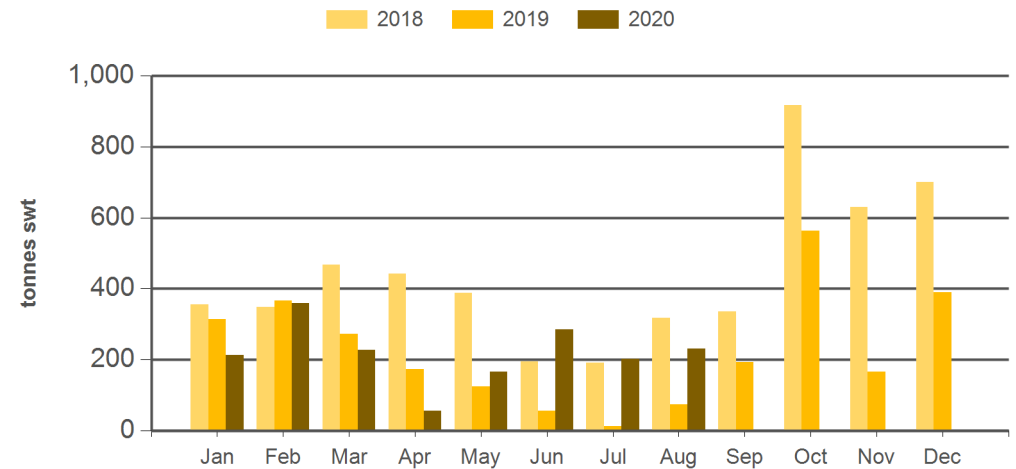
Source: DAWR. YTD = Calendar year-to-August. Y-O-Y = Year-on-year. M-O-M = Month-on-month. SWT = Shipped weight. For further information email globalindustryinsights@mla.com.au.

Monthly lamb exports to the EU



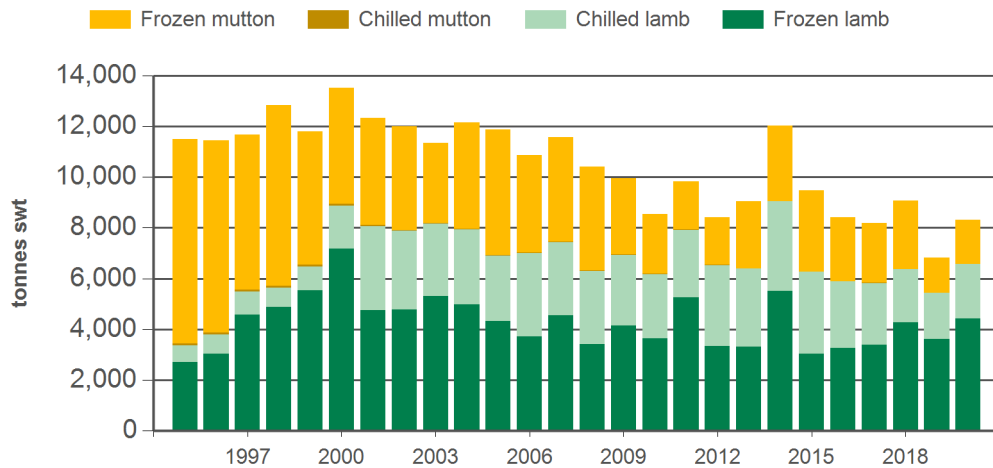
Source: DAWR, Prepared by MLA

Monthly mutton exports to the EU



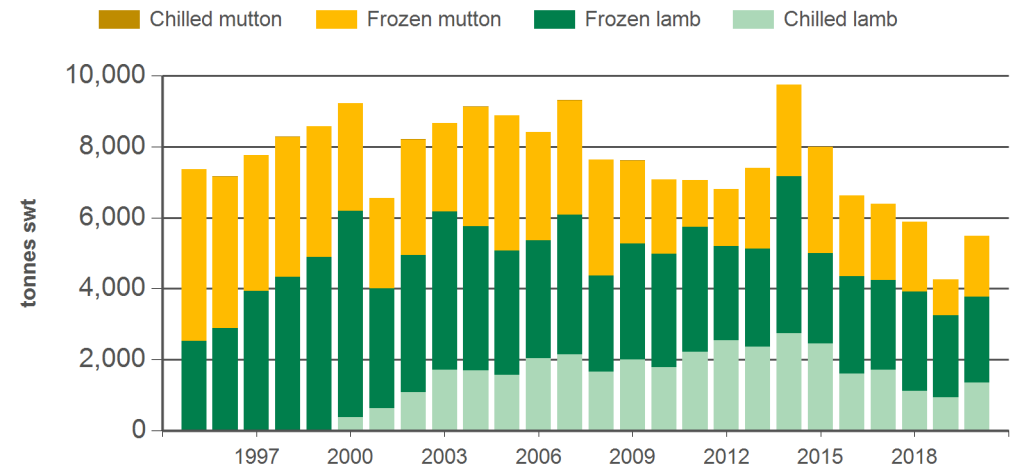
Source: DAWR, Prepared by MLA

Year-to-August sheepmeat exports to the EU



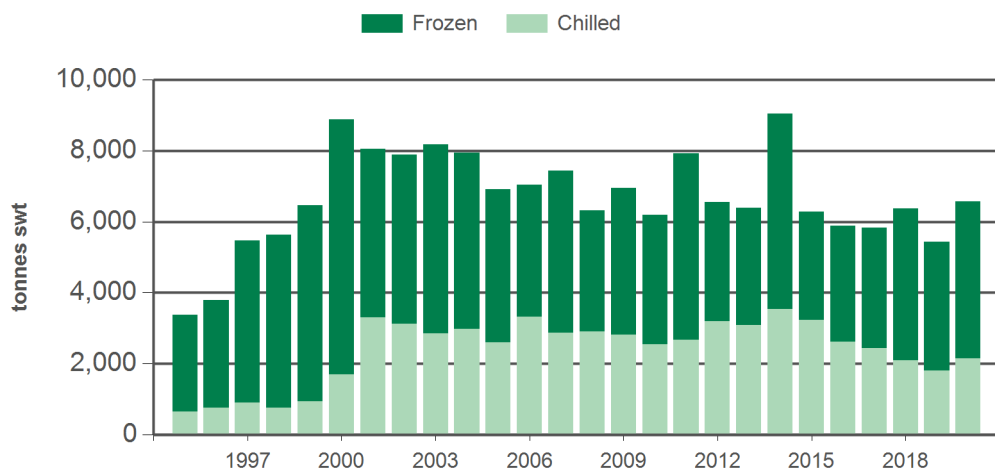
Source: DAWR, Prepared by MLA

Year-to-August sheepmeat exports to the UK



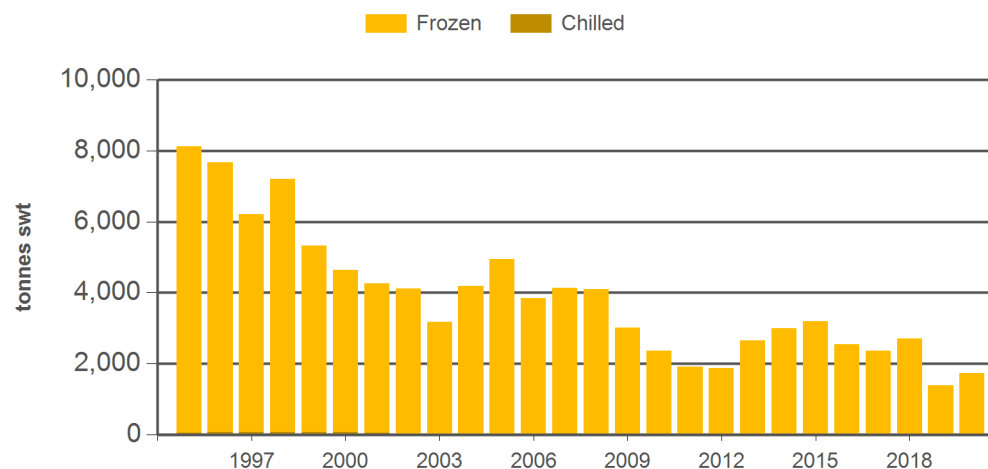
Source: DAWR, Prepared by MLA

Year-to-August lamb exports to the EU



Source: DAWR, Prepared by MLA

Year-to-August mutton exports to the EU



Source: DAWR, Prepared by MLA

Historical sheepmeat exports to the European Union (UK inclusive) - Calendar year totals

Volume (tonnes swt)	2005	2006	2007	2008	2009	2010	2011	2012	2013	2014	2015	2016	2017	2018	2019	2020 YTD	Y-O-Y % chg.
Total	18,224	18,827	19,734	19,015	19,099	16,893	16,458	15,852	16,735	18,758	16,195	16,471	15,454	15,295	12,319	8,318	22
Lamb	10,592	11,808	12,734	11,581	13,730	11,951	12,930	12,129	11,747	14,042	10,656	11,512	10,281	10,008	9,613	6,577	21
Mutton	7,632	7,020	7,000	7,434	5,370	4,941	3,528	3,723	4,988	4,716	5,539	4,959	5,174	5,288	2,706	1,741	25

Historical sheepmeat exports to the United Kingdom - Calendar year totals

Volume (tonnes swt)	2005	2006	2007	2008	2009	2010	2011	2012	2013	2014	2015	2016	2017	2018	2019	2020 YTD	Y-O-Y % chg.
Total	13,341	13,604	14,643	13,058	13,826	13,151	11,426	12,296	13,354	14,832	12,921	12,378	10,927	9,698	7,788	5,486	29
Lamb	7,601	8,185	9,105	7,104	9,384	8,754	8,780	9,016	9,124	10,561	7,806	7,950	6,567	5,691	5,616	3,772	16
Mutton	5,740	5,418	5,539	5,954	4,442	4,397	2,646	3,279	4,230	4,271	5,115	4,428	4,360	4,006	2,172	1,714	69

Source: DAWR. YTD = Calendar year-to-August. SWT = Shipped weight. For further information email globalindustryinsights@mla.com.au.