

European Union (UK inclusive)

12-months ending September

Volume (tonnes swt)	Chilled		Frozen		Total	
	12-months ending September	Y-O-Y % chg.	12-months ending September	Y-O-Y % chg.	12-months ending September	Y-O-Y % chg.
Total	3,841	10	10,334	8	14,175	8
Lamb	3,841	10	7,253	26	11,094	20
Mutton	-	-100	3,081	-20	3,081	-20

Calendar year-to-September

Chilled		Frozen		Total	
2020 YTD	Y-O-Y % chg.	2020 YTD	Y-O-Y % chg.	2020 YTD	Y-O-Y % chg.
2,400	24	7,085	24	9,485	24
2,400	24	5,124	25	7,523	25
-	-	1,962	24	1,962	24

Month of September

Chilled			Frozen			Total		
2020 September	M-O-M % chg.	Y-O-Y % chg.	2020 September	M-O-M % chg.	Y-O-Y % chg.	2020 September	M-O-M % chg.	Y-O-Y % chg.
256	61	106	911	2	32	1,167	11	44
256	61	106	690	4	40	946	15	53
-	-	-	220	-5	14	220	-5	14

United Kingdom

12-months ending September

Volume (tonnes swt)	Chilled		Frozen		Total	
	12-months ending September	Y-O-Y % chg.	12-months ending September	Y-O-Y % chg.	12-months ending September	Y-O-Y % chg.
Total	1,876	34	7,218	4	9,094	9
Lamb	1,876	34	4,308	9	6,184	15
Mutton	-	-	2,910	-2	2,910	-2

Calendar year-to-September

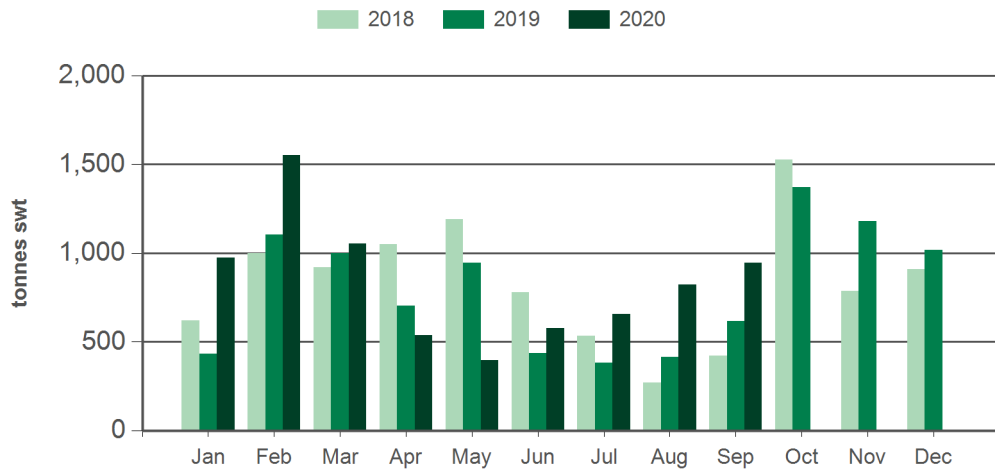
Chilled		Frozen		Total	
2020 YTD	Y-O-Y % chg.	2020 YTD	Y-O-Y % chg.	2020 YTD	Y-O-Y % chg.
1,536	50	4,714	20	6,250	26
1,536	50	2,780	2	4,316	15
-	-	1,934	62	1,934	62

Month of September

Chilled			Frozen			Total		
2020 September	M-O-M % chg.	Y-O-Y % chg.	2020 September	M-O-M % chg.	Y-O-Y % chg.	2020 September	M-O-M % chg.	Y-O-Y % chg.
177	35	118	587	20	-3	764	23	11
177	35	118	367	43	-14	544	40	7
-	-	-	220	-5	20	220	-5	20

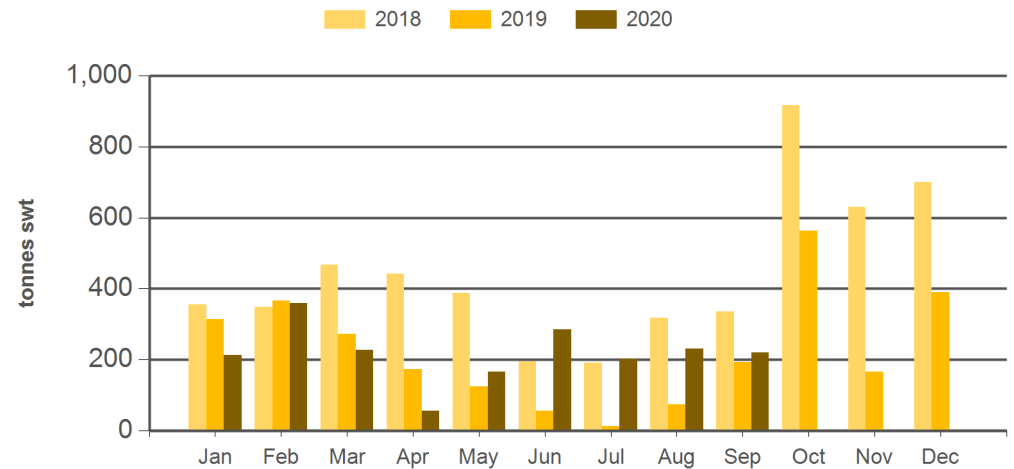
Source: DAWR. YTD = Calendar year-to-September. Y-O-Y = Year-on-year. M-O-M = Month-on-month. SWT = Shipped weight. For further information email globalindustryinsights@mla.com.au.

Monthly lamb exports to the EU



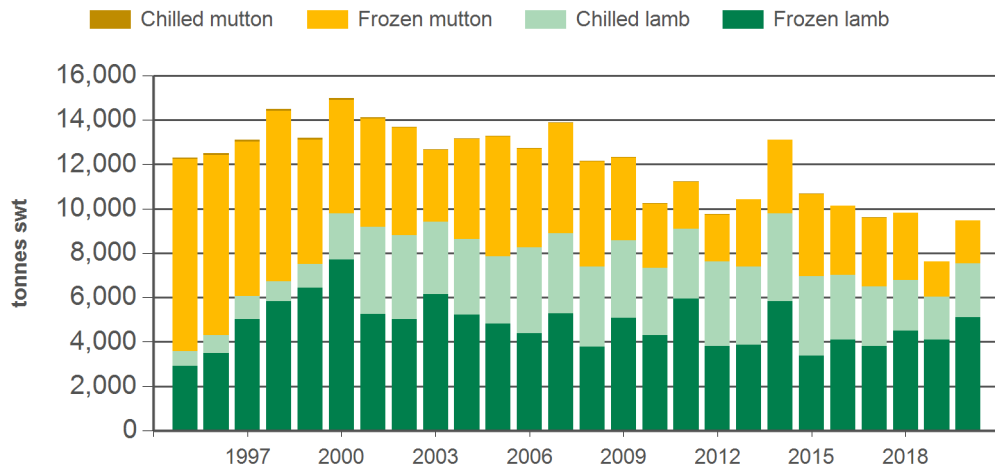
Source: DAWR, Prepared by MLA

Monthly mutton exports to the EU



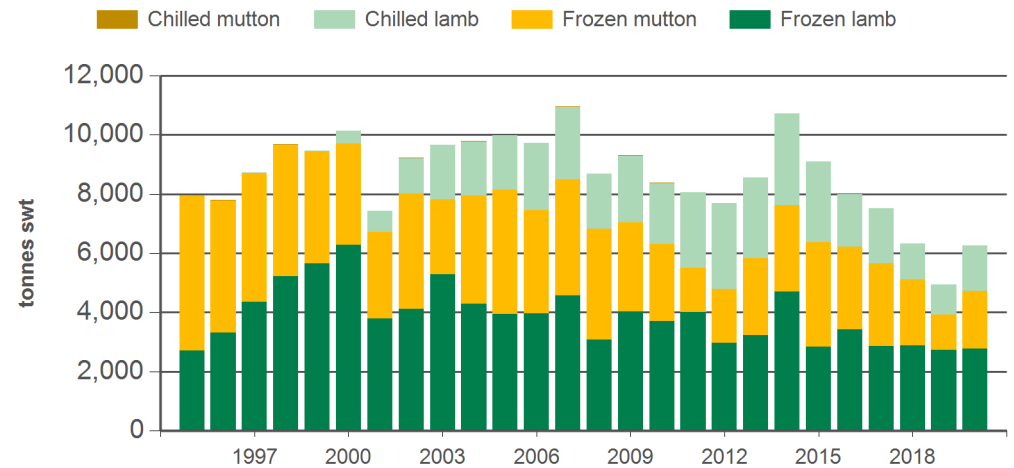
Source: DAWR, Prepared by MLA

Year-to-September sheepmeat exports to the EU



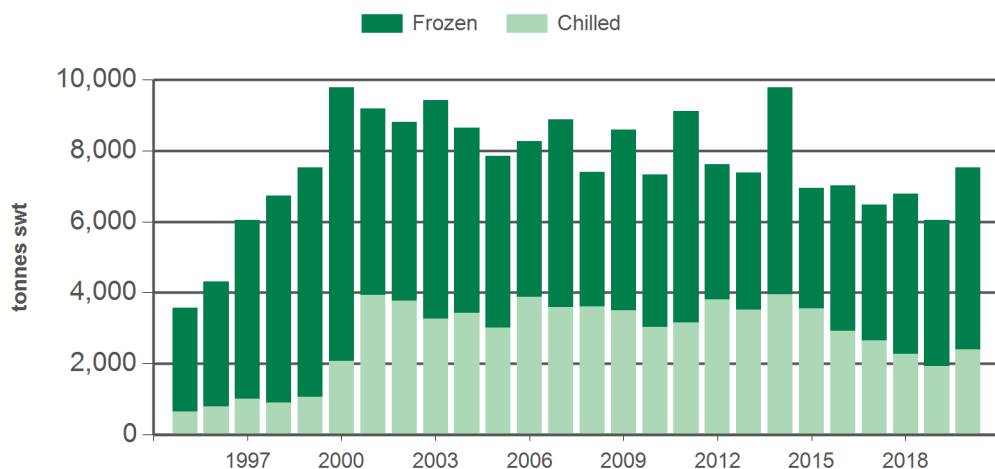
Source: DAWR, Prepared by MLA

Year-to-September sheepmeat exports to the UK



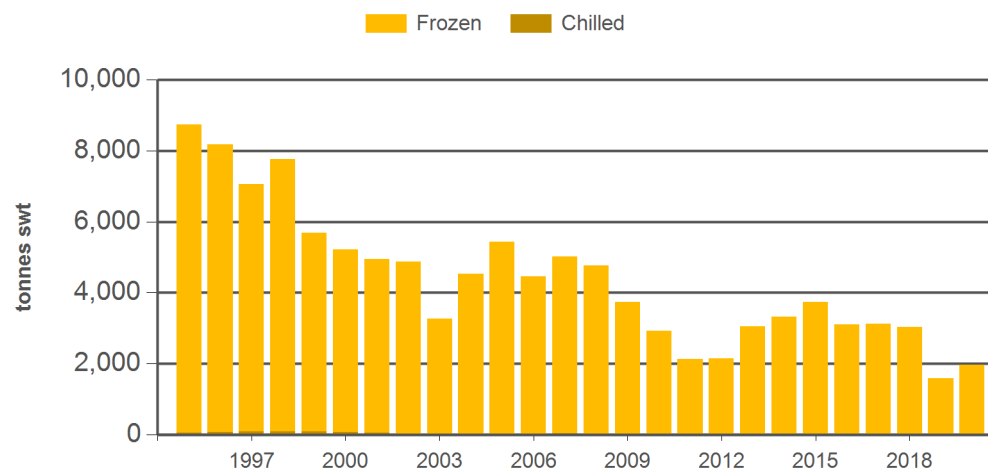
Source: DAWR, Prepared by MLA

Year-to-September lamb exports to the EU



Source: DAWR, Prepared by MLA

Year-to-September mutton exports to the EU



Source: DAWR, Prepared by MLA

Historical sheepmeat exports to the European Union (UK inclusive) - Calendar year totals

Volume (tonnes swt)	2005	2006	2007	2008	2009	2010	2011	2012	2013	2014	2015	2016	2017	2018	2019	2020 YTD	Y-O-Y % chg.
Total	18,224	18,827	19,734	19,015	19,099	16,893	16,458	15,852	16,735	18,758	16,195	16,471	15,454	15,295	12,319	9,485	24
Lamb	10,592	11,808	12,734	11,581	13,730	11,951	12,930	12,129	11,747	14,042	10,656	11,512	10,281	10,008	9,613	7,523	25
Mutton	7,632	7,020	7,000	7,434	5,370	4,941	3,528	3,723	4,988	4,716	5,539	4,959	5,174	5,288	2,706	1,962	24

Historical sheepmeat exports to the United Kingdom - Calendar year totals

Volume (tonnes swt)	2005	2006	2007	2008	2009	2010	2011	2012	2013	2014	2015	2016	2017	2018	2019	2020 YTD	Y-O-Y % chg.
Total	13,341	13,604	14,643	13,058	13,826	13,151	11,426	12,296	13,354	14,832	12,921	12,378	10,927	9,698	7,788	6,250	26
Lamb	7,601	8,185	9,105	7,104	9,384	8,754	8,780	9,016	9,124	10,561	7,806	7,950	6,567	5,691	5,616	4,316	15
Mutton	5,740	5,418	5,539	5,954	4,442	4,397	2,646	3,279	4,230	4,271	5,115	4,428	4,360	4,006	2,172	1,934	62

Source: DAWR. YTD = Calendar year-to-September. SWT = Shipped weight. For further information email globalindustryinsights@mla.com.au.