

# Fast Facts

# 2020

## Australia's beef industry

The off-farm meat value (domestic expenditure plus export value, including live export) of the Australian beef industry was approximately **\$20.2 billion in 2019** – up 3% on the 2018 period (MLA estimate).

At the time of publication, figures included in this document were the most up to date available but may be subject to revision.

### Herd facts and figures:

- There are 45,712 agricultural businesses involved in the cattle industry (MLA State of the Industry Report – 2020).
- 24.7 million head of cattle in Australia as of June 2019 (MLA State of the Industry Report – 2020)<sup>1</sup>.
- 11.7 million head of beef cows and heifers aged one year and over as of 2018–19 (MLA State of the Industry Report – 2020).

### People in the industry:

- Around 189,000 people are employed in the red meat industry, including on-farm production, processing and retail (MLA State of the Industry Report – 2020).

### How much is produced?

- In 2018-19, Australia produced approximately 2.4 million tonnes carcass weight (cwt) of beef and veal (MLA State of the Industry Report – 2020).
- In 2019, 3.0 million grainfed cattle were marketed (feedlot turn-off) – 36% of all adult cattle slaughtered (MLA State of the Industry Report – 2020).

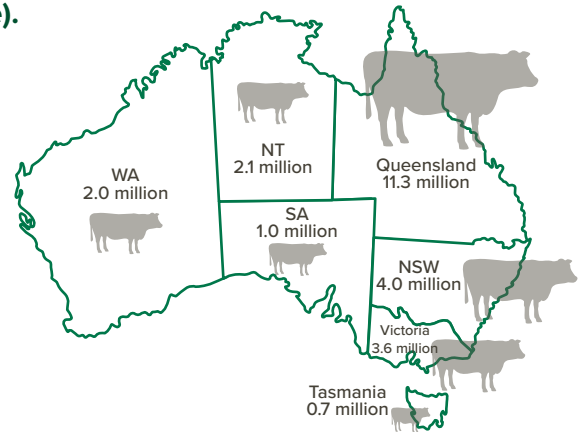
### What is the value of production?

- The gross value of Australian cattle and calf production (including live cattle exports) in 2019–20 is estimated at A\$15.1 billion (ABARES Agricultural Commodities September 2020).
- Cattle are estimated to have contributed 23% of the total farm value of A\$66.5 billion in 2019–20 (ABARES Agricultural Commodities September 2020).

### Domestic value and consumption:

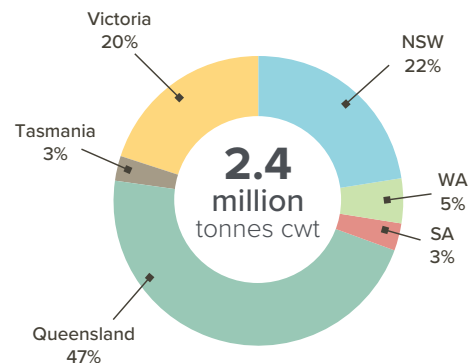
- Domestic expenditure on beef was approximately A\$7.8 billion in 2019 (MLA estimate).
- Australians ate around 25kg of beef per person in 2018–19 (MLA State of the Industry Report – 2020).

National cattle numbers as at June 2019: 24.7 million head



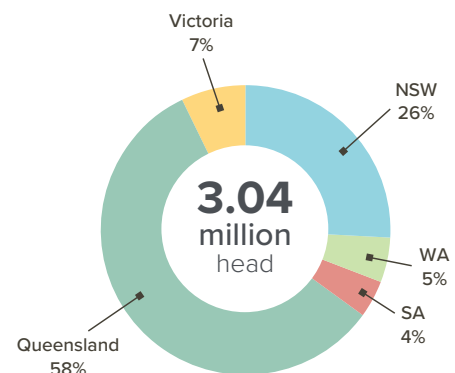
Source: ABS

### Australian beef and veal production



Source: ABS, 2019

### Australian lotfed cattle turn-off



Source: ALFA/MLA, 2019

<sup>1</sup> Beef cattle numbers as at June 2019 were 22.4 million head (ABS Agricultural Commodities 2018–19). Dairy cattle numbers as at June 2019 were 2.3 million head (ABS Agricultural Commodities 2018–19).

# Fast Facts

# 2020

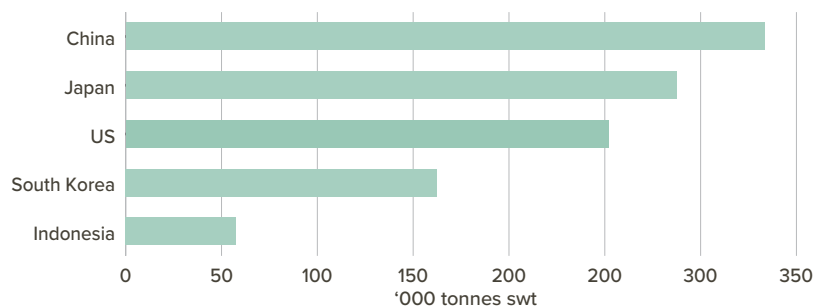


## Australia's beef industry

### Export value and volume:

- In 2019, Australia exported 76% of its total beef and veal production (MLA Estimate).
- The value of total beef and veal exports in 2019 was A\$10.8 billion (MLA State of the Industry Report – 2020).
- Australian live cattle exports were valued at A\$1.6 billion in 2018–19 (ABS), with 1.3 million head exported (MLA State of the Industry Report – 2020).

### Australia's top five beef and veal export markets

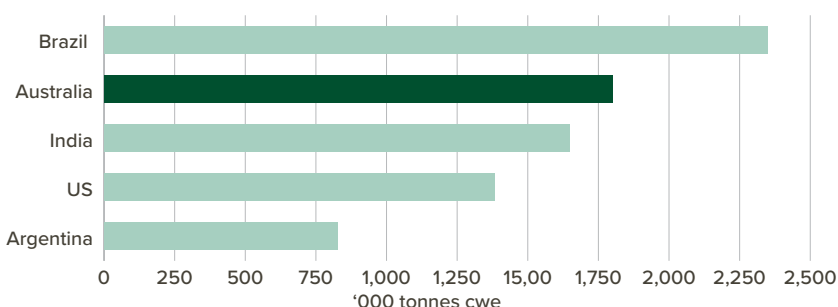


Source: DAWE, 2019

### Australia's place in the world:

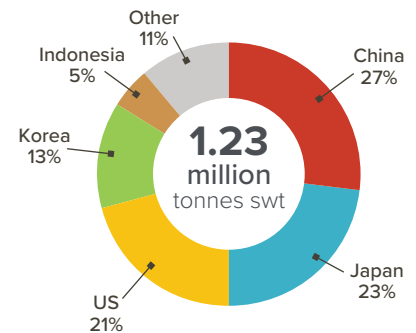
- Australia has approximately 2% of the world's cattle herd. (MLA State of the Industry Report – 2020).
- Australia is the 2nd largest beef exporter in the world behind Brazil (MLA State of the Industry Report – 2020).

### Top five beef and veal exporting countries



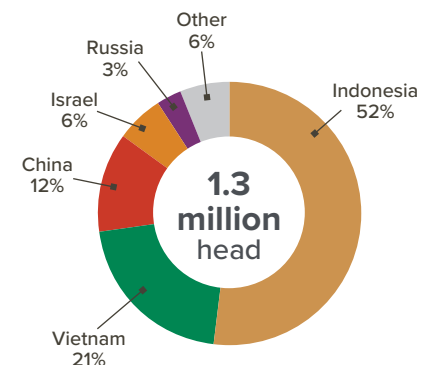
Source: DAWE, IHS Markit, Global Trade Atlas. 2019–20

### Australian beef and veal exports



Source: DAWE, 2019

### Australian live cattle exports\*



\* includes dairy cattle  
Source: DAWE, 2019