



LiveLink

Live export statistics

This edition of LiveLink includes the latest trends in Australian live export trade statistics and prices. Please note that all export data over the past nine months may later be revised.

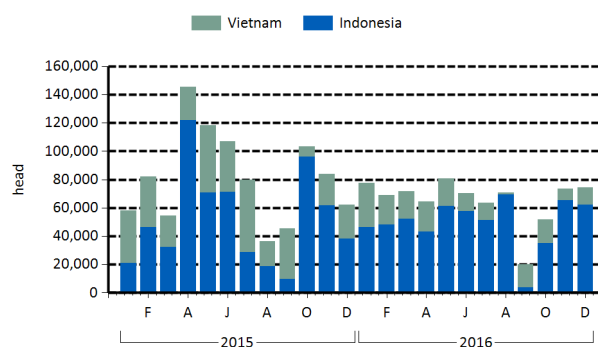
To subscribe to this report or if you have any queries, please email marketinfo@mla.com.au. Historical live export data can be downloaded from MLA's public database - <http://statistics.mla.com.au/>.

Live cattle exports totalled 1.129 million head in 2016 (combined ABS and DAWR data), declining 15% on 2015 comparable figures. This result was influenced by lower Australian cattle supplies, higher cattle prices, unfavourable exchange rates, vessels coming off contract but also policy changes and market consolidation in some of the key export markets.

Feeder cattle exports to Indonesia remained stable during December with 62,175 head exported, taking the 12 months to December to 595,950 head, down only 3% year-on-year – better than expected considering the disruption caused by the import policy shift part way through the year. Official reports indicate that 25,000 tonnes of frozen Indian buffalo meat has already entered the Indonesian market; however these are estimated to be conservative figures. By the end of the financial year there is the potential for over a 100,000 tonnes of Indian buffalo to have entered Indonesia, with permits allocated for these volumes. Furthermore, there will be a requirement to increase the beef supply as the religious festival of Ramadan approaches in the month of May. 6,326 breeders were shipped to Indonesia in December, primarily as part of the ongoing government breeding policies, which are set for review at the end of 2018.

For the 12 months ending December, feeder and slaughter exports to Vietnam declined 47% year-on-year totalling 191,808 head – albeit off an extremely high base from the previous year and bringing figures in line with what is generally considered sustainable for the Vietnamese market.

Figure 1 Feeder and slaughter cattle exports



Source: ABS, DAWR

Table 1 Feeder and slaughter cattle exports by destination

Unit: head	2016			12 months ending 2016 December	12 months ending 2015 December	% change	head change
	Dec	Nov	Oct				
Brunei			1,494	4,873	6,068	-20%	-1,195
Cambodia				2,800			2,800
China				338	150	125%	188
Egypt					18,500	-100%	-18,500
Indonesia	62,175	65,538	34,810	595,950	616,342	-3%	-20,392
Israel	7,029			72,334	79,334	-9%	-7,000
Japan			960	7,739	8,997	-14%	-1,258
Jordan					2,233	-100%	-2,233
Kuwait	50	25	25	350	100	250%	250
Malaysia	1,140	3,836		28,789	50,104	-43%	-21,315
Mauritius					2,140	-100%	-2,140
Mexico				6,677			6,677
Philippines				15,694	26,716	-41%	-11,022
Qatar		150	200	1,200	150	700%	1,050
Russian Federation				26,812	39,352	-32%	-12,540
Thailand				1,461	9,205	-84%	-7,744
Turkey	13,646	11,166	17,000	56,546			56,546
UAE				205	800	-74%	-595
Vietnam	12,074	7,909	16,879	191,808	360,105	-47%	-168,297
Total volume	96,114	88,624	71,368	1,013,576	1,220,296	-17%	-206,720

Table 2 Feeder and slaughter cattle exports by port

Unit: head	Year	Total	Darwin	Unknown*	Townsville	Fremantle	Broome	Port Adelaide	Wyndham	Other
2015	Jul	115,019	41,110		30,605	7,500	24,198	6,110	3,069	2,427
	Aug	59,005	33,955			9,000	15,063			987
	Sep	64,582	26,386		19,073	12,033	3,107			3,983
	Oct	122,902		122,902						
	Nov	106,488	32,332		29,227	16,750	4,105		2,085	21,989
	Dec	68,387	39,850		10,294	11,482				6,761
2016	Jan	106,257	19,902		21,280	49,300				15,775
	Feb	81,156	20,033		35,114	13,131		6,397		6,481
	Mar	91,917	43,892		17,146	6,643			5,209	19,027
	Apr	98,095	14,656		33,340	8,878	24,494	5,020	3,741	7,966
	May	86,659	33,519		21,290	3,000	17,427		8,012	3,411
	Jun	99,096	45,283		12,014	12,728	17,599	6,631	2,733	2,108
	Jul	81,052	46,016		6,528	12,420	13,327		2,761	
	Aug	83,307	33,917		19,797	7,990	9,463		5,363	6,777
	Sep	29,931	9,743		12,983	5,016				2,189
	Oct	71,368	20,104		19,141	17,225	8,277			6,621
	Nov	88,624	35,474		3,646	36,118	2,830	3,500		7,056
	Dec **	96,114								

Data specifications

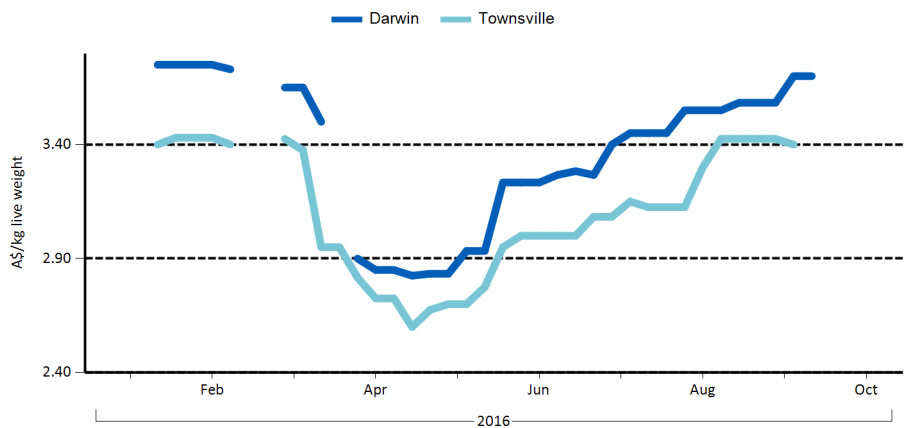
Due to the timing of live export trade data being released, both Australian Bureau of Statistics (ABS) and Department of Agriculture and Water Resources (DAWR) data is used in this report. The most recent month and, at times, second most recent month trade data comes from DAWR. This data is then updated when ABS data is released.

* In October 2015, the ABS did not disclose feeder and slaughter cattle trade data to Vietnam, China and Japan. For this month, individual country shipments have been estimated by MLA. In addition, trade data by individual port was also not disclosed in October 2015 – this data is aggregated under “Unknown” port.

** DAWR does not report on individual ports. Port data is updated when released by the ABS.

All pricing data is collected by Meat and Livestock Australia from a range of sources.

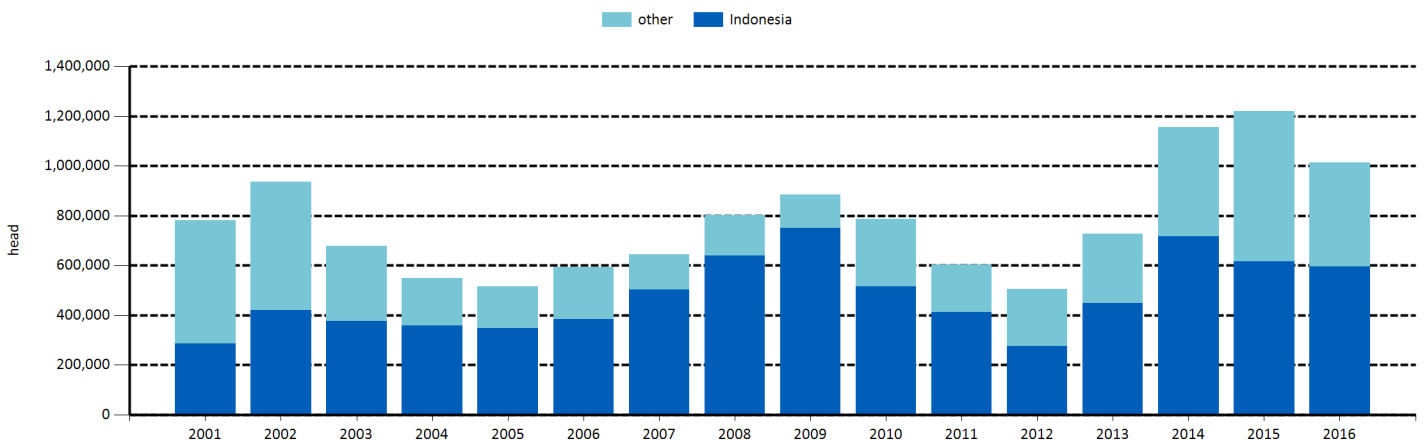
Figure 2 Live export feeder cattle prices



Source: MLA live exporter survey
Please note, prices include up to the end of the previous month and may not include the latest trends

For more detailed live export price information, in addition to other northern cattle markets, click here to access the latest edition of the [North of the Tropic Beef Report](#).

Figure 3 Feeder and slaughter cattle exports***



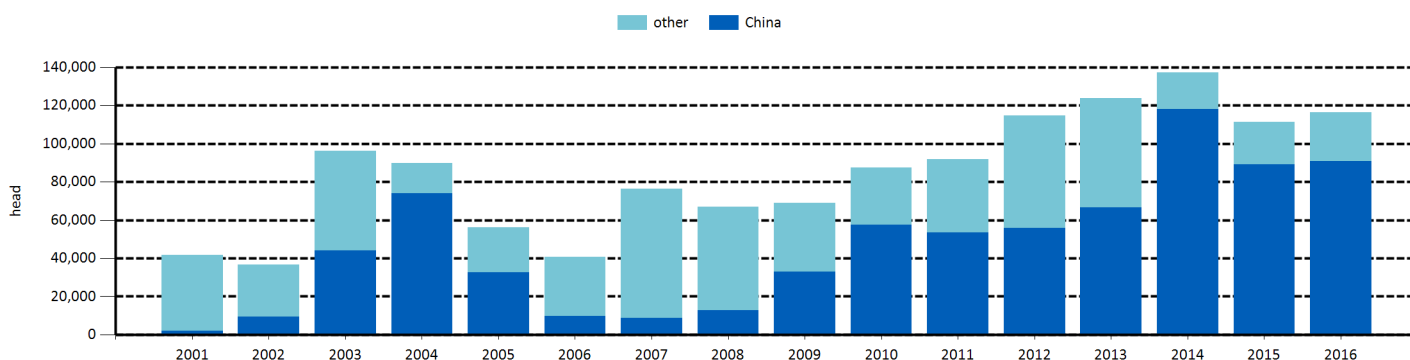
Source: ABS, DAWR ***the current year total is up to and including the most recently reported month

Table 3 Beef and dairy breeder cattle exports by destination

Unit: head Destination market	2016			12 months ending 2016 December	12 months ending 2015 December	% change	head change
	Dec	Nov	Oct				
Bangladesh	4			4	70	-94%	-66
China	13,887	221	4,000	90,758	89,000	2%	1,758
Indonesia	6,326	200	200	8,170	1,977	313%	6,193
Japan				303	24	1163%	279
Kuwait	255			2,555	1,164	120%	1,391
Laos					930	-100%	-930
Malaysia	164	368		1,627	2,811	-42%	-1,184
Pakistan	2,312			3,266	3,892	-16%	-626
Philippines				240			240
Qatar					360	-100%	-360
Russian Federation					2,354	-100%	-2,354
Samoa					46	-100%	-46
Singapore					30	-100%	-30
Sri Lanka					2,498	-100%	-2,498
Taiwan	184	392	222	1,018	411	148%	607
Thailand	199			230			230
Turkey	1,906			5,381			5,381
UAE	124	68		349	315	11%	34
Vietnam	30			2,459	5,410	-55%	-2,951
Total volume	25,391	1,249	4,422	116,390	111,292	5%	5,098

Table 4 Beef and dairy breeder cattle exports by port

Unit: head Year	Total	Portland	Geelong	Sydney	Melbourne	Port Adelaide	Fremantle	Darwin	Other
2016	Jan	99			99				
	Feb	11,044	8,639		5	64	2,300		36
	Mar	11,914	10,077		45	220		1,572	
	Apr	8,877	8,434		260	183			
	May	12,272	7,917	3,828	90	435			2
	Jun	12,696	8,721		30	470	3,475		
	Jul	9,479	3,904	4,020	40	71		930	514
	Aug	8,486	8,267		219				
	Sep	10,461	9,924		48			489	
	Oct	4,422	4,000			222			200
	Nov	1,249			368	460			421
	Dec **	25,391							

Figure 4 Beef and dairy breeder cattle exports***

Source: ABS, DAWR ***the current year total is up to and including the most recently reported month

Table 5 Sheep exports by destination

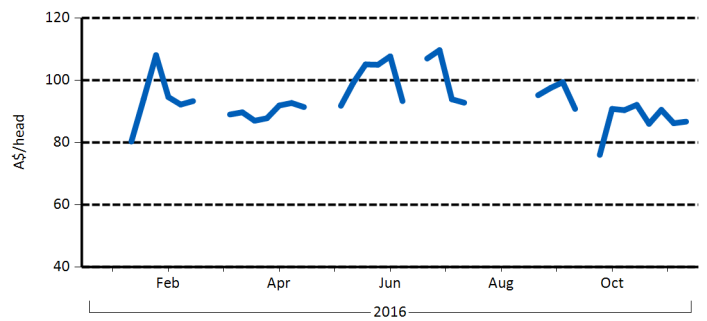
Unit: head Destination market	2016			12 months ending 2016 December	12 months ending 2015 December	% change	head change
	Dec	Nov	Oct				
Argentina				13	32	-59%	-19
Bahrain					315,000	-100%	-315,000
Bangladesh				50			50
Brunei				300	831	-64%	-531
Chile					20	-100%	-20
China		1,474		6,456	16,540	-61%	-10,084
Egypt					9,500	-100%	-9,500
Fiji				77			77
Israel				120,049	78,150	54%	41,899
Jordan				182,700	139,500	31%	43,200
Kazakhstan					7	-100%	-7
Kuwait	71,071	69,438	97,449	666,313	608,230	10%	58,083
Lebanon				12,000			12,000
Malaysia	8,347	4,288	3,144	69,012	48,138	43%	20,874
New Zealand		4		9	5	80%	4
Oman		5,000	5,000	89,740	79,804	12%	9,936
Philippines				116	243	-52%	-127
Qatar	72,000	65,000	63,000	598,000	372,162	61%	225,838
Samoa					14	-100%	-14
Singapore				2,100	1,980	6%	120
UAE	9,787	12,000	28,500	189,304	289,605	-35%	-100,301
Uruguay				70			70
Vietnam	17			17			17
Total volume	161,230	157,204	197,093	1,936,334	1,959,761	-1%	-23,427

Figure 5 Sheep exports by region - past 12 months



Source: ABS, DAWR

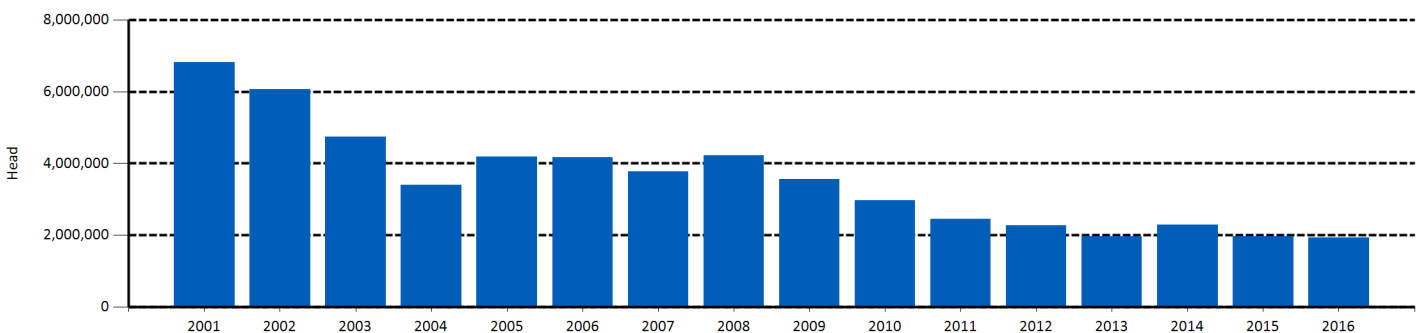
Figure 6 WA live export wether price



Source: MLA Muchea saleyard market report

Please note, prices include up to the end of the previous month and may not include the latest trends

Figure 7 Sheep exports***



Source: ABS, DAWR ***the current year total is up to and including the most recently reported month

Sheep exports year-on-year stayed almost unchanged totalling 1.936 million head, comparable to 1.959 million head in 2015.

No shipments were sent to Bahrain throughout 2016 off the back of the Bahrain government’s decision to remove subsidies on imported Australian sheep meat and live sheep.

Elsewhere shipments to Qatar and Kuwait increased 61% and 10% respectively year-on-year, helping take up the shortfall from Bahrain.

Figure 8 Sheep exports by state - past 12 months



Source: ABS, DAWR

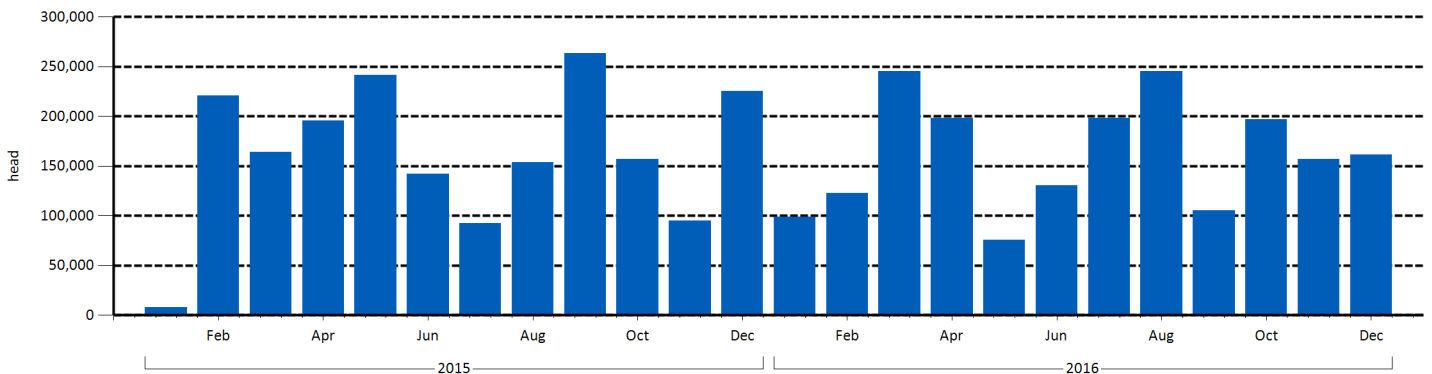
Want to subscribe to the monthly LiveLink report? Email marketinfo@mla.com.au to receive any of MLA's regular reports free of charge.

[Click here to find the full list of MLA market information publications.](#)

Table 6 Sheep exports by port

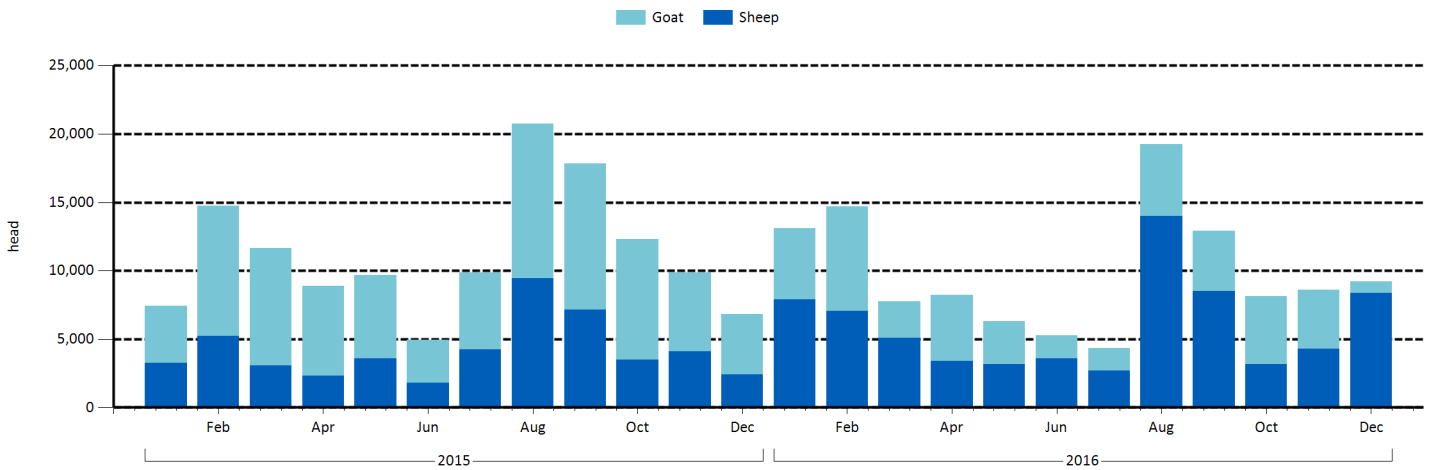
Unit: head	Year	Total	Fremantle	Port Adelaide	Perth	Portland	Sydney	Melbourne	Adelaide	Other
2015	Jul	92,816	84,690	3,900	1,020				3,206	
	Aug	153,713	149,709		1,515		1,293		1,196	
	Sep	263,258	207,156	45,000	6,182		606	2,955	1,359	
	Oct	156,968	153,425		1,095		711	30	1,707	
	Nov	95,143	90,842		1,437		183	627	1,869	185
	Dec	225,657	179,628	42,790	734		1,668		837	
2016	Jan	98,815	89,262	5,000	2,036		24		2,493	
	Feb	123,087	79,887	38,484	2,237		171	32	1,628	648
	Mar	245,280	241,403		2,922		108	98	749	
	Apr	198,033	193,166		2,536		100	657	1,574	
	May	75,806	52,293	20,245	1,066		116	692	1,394	
	Jun	130,883	124,028	2,972	1,567			275	2,041	
	Jul	198,147	194,300		2,164		250	1,433		
	Aug	245,339	202,509	33,000	3,835			1,017	2,529	2,449
	Sep	105,417	96,894		6,867		350	132	1,174	
	Oct	197,093	193,949		2,297		54		793	
	Nov	157,204	151,438		2,077			2,168	1,521	
	Dec **	161,230								

Figure 9 Sheep exports



Source: ABS, DAWR

Figure 10 Goat and sheep exports to Malaysia & Singapore



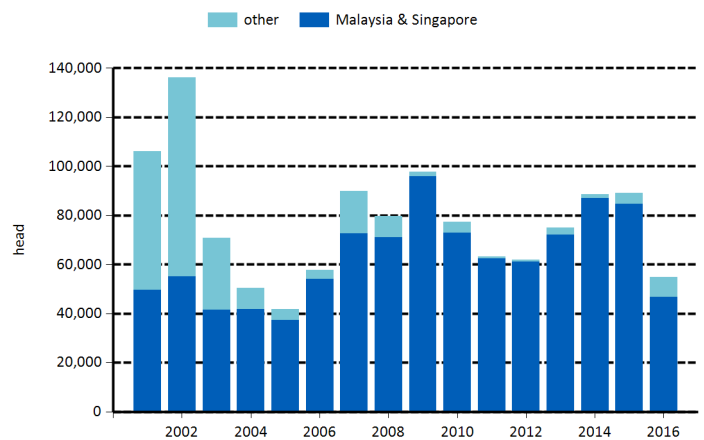
Source: ABS, DAWR

Table 7 Goat exports by destination

Unit: head Destination market	2016			12 months ending 2016 December	12 months ending 2015 December	% change	head change
	Dec	Nov	Oct				
Brunei				216	1,431	-85%	-1,215
Fiji				75			75
Indonesia					211	-100%	-211
Malaysia	886	4,322	4,979	46,662	84,380	-45%	-37,718
Nepal				116	129	-10%	-13
New Zealand				7	1	600%	6
Philippines				550	397	39%	153
Singapore					345	-100%	-345
UAE		166		6,500	2,251	189%	4,249
Vietnam		100		779			779
Total volume	886	4,588	4,979	54,905	89,145	-38%	-34,240

Goat exports declined 38% year-on-year, totalling 54,905 head. The competition between domestic consumption and exports has been increased by an upsurge in local demand. In addition, high goat prices have further affected export volumes.

Figure 11 Goat exports***



Source: ABS, DAWR

current year total is up to and including the most recently reported month

***the

© Meat & Livestock Australia Limited, 2016. ABN 39 081 678 364. MLA makes no representations as to the accuracy of any information or advice contained in this publication and excludes all liability, whether in contract, tort (including negligence or breach of statutory duty) or otherwise as a result of reliance by any person on such information or advice. All use of MLA publications, reports and information is subject to MLA's Market Report and Information Terms of Use. Please read our terms of use carefully and ensure you are familiar with its content – [click here for MLA's terms of use](#).