

European Union (UK inclusive)

12-months ending September

Volume (tonnes swt)	Chilled		Frozen		Total	
	12-months ending September	Y-O-Y % chg.	12-months ending September	Y-O-Y % chg.	12-months ending September	Y-O-Y % chg.
Total	3,504	-11	9,593	-18	13,097	-16
Lamb	3,503	-11	5,760	-13	9,263	-12
Mutton	1		3,833	-25	3,834	-25

Calendar year-to-September

Chilled		Frozen		Total	
2019 YTD	Y-O-Y % chg.	2019 YTD	Y-O-Y % chg.	2019 YTD	Y-O-Y % chg.
1,929	-15	5,700	-25	7,629	-22
1,929	-15	4,113	-9	6,042	-11
-	-	1,587	-48	1,587	-48

Month of September

Chilled			Frozen			Total		
2019 September	M-O-M % chg.	Y-O-Y % chg.	2019 September	M-O-M % chg.	Y-O-Y % chg.	2019 September	M-O-M % chg.	Y-O-Y % chg.
124	53	-33	688	69	20	812	66	7
124	53	-33	494	48	107	618	49	46
-	-	-	194	161	-42	194	161	-42

United Kingdom

12-months ending September

Volume (tonnes swt)	Chilled		Frozen		Total	
	12-months ending September	Y-O-Y % chg.	12-months ending September	Y-O-Y % chg.	12-months ending September	Y-O-Y % chg.
Total	1,402	-14	6,924	-14	8,326	-14
Lamb	1,402	-14	3,956	-8	5,358	-9
Mutton	-		2,968	-22	2,968	-22

Calendar year-to-September

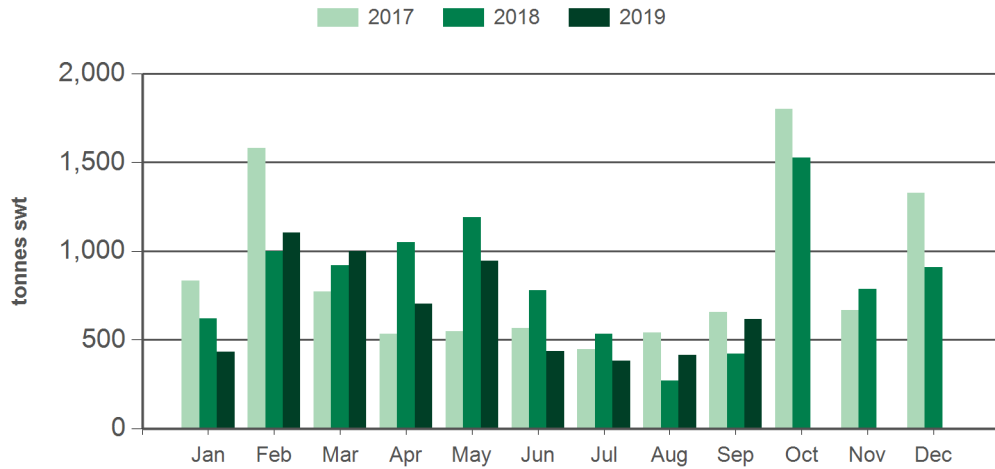
Chilled		Frozen		Total	
2019 YTD	Y-O-Y % chg.	2019 YTD	Y-O-Y % chg.	2019 YTD	Y-O-Y % chg.
1,023	-15	3,921	-23	4,944	-22
1,023	-15	2,724	-5	3,747	-8
-	-	1,196	-46	1,196	-46

Month of September

Chilled			Frozen			Total		
2019 September	M-O-M % chg.	Y-O-Y % chg.	2019 September	M-O-M % chg.	Y-O-Y % chg.	2019 September	M-O-M % chg.	Y-O-Y % chg.
81	28	-8	608	70	74	689	63	57
81	28	-8	425	49	505	506	45	219
-	-	-	183	147	-35	183	147	-35

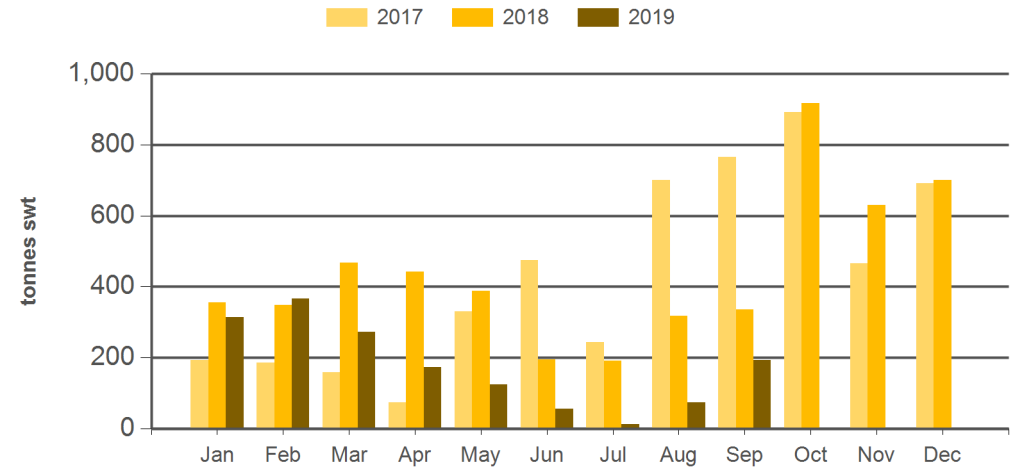
Source: DAWR. YTD = Calendar year-to-September. Y-O-Y = Year-on-year. M-O-M = Month-on-month. SWT = Shipped weight. For further information email globalindustryinsights@mla.com.au.

Monthly lamb exports to the EU



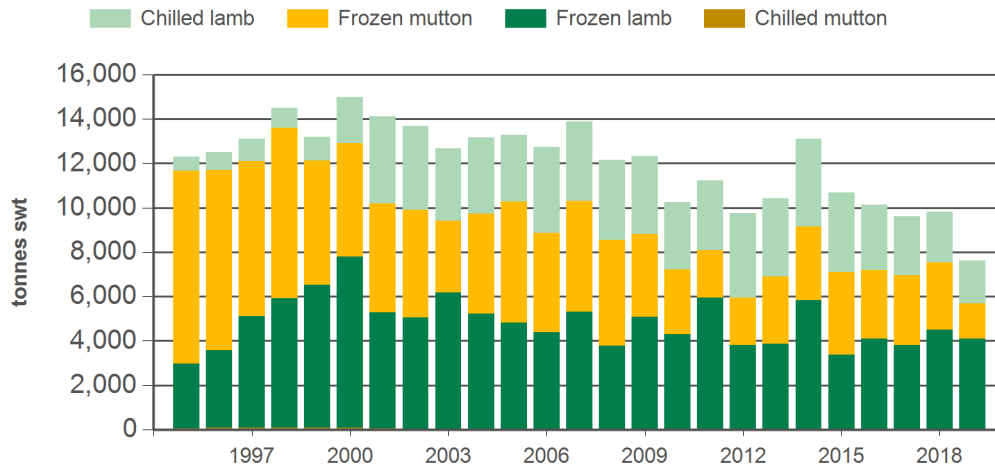
Source: DAWR, Prepared by MLA

Monthly mutton exports to the EU



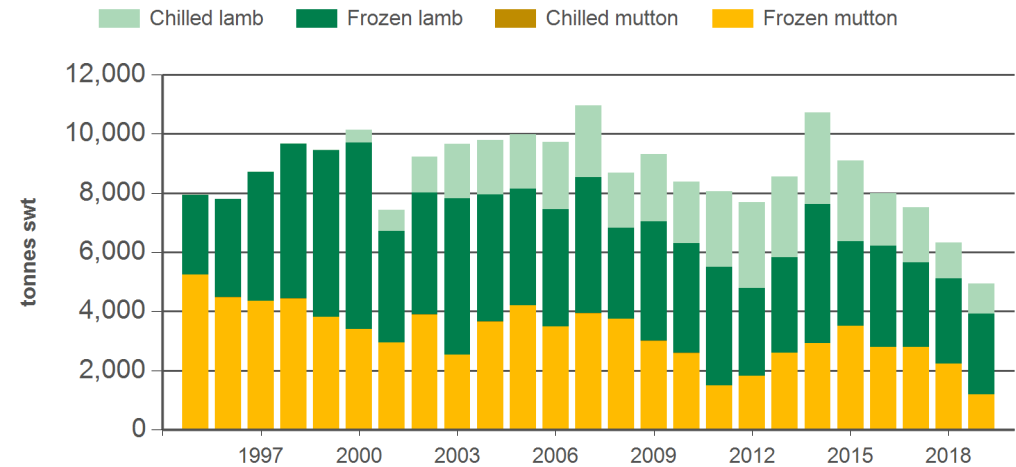
Source: DAWR, Prepared by MLA

Year-to-September sheepmeat exports to the EU



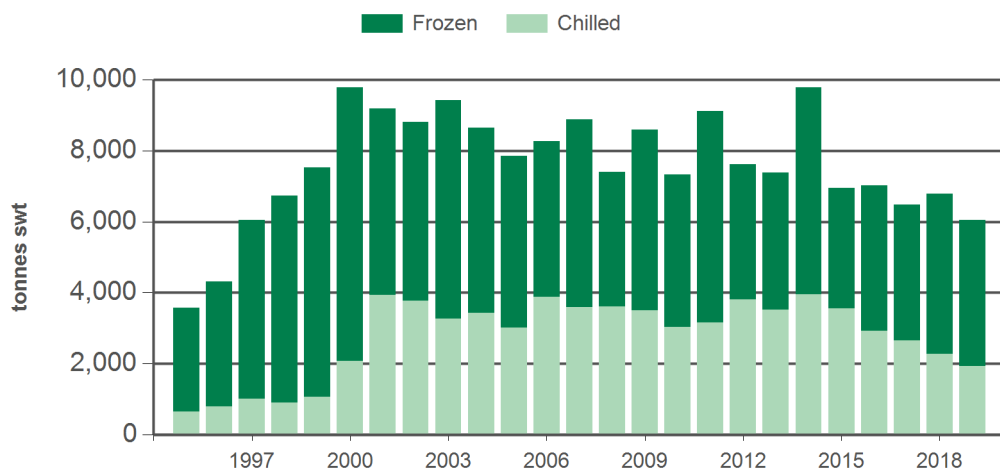
Source: DAWR, Prepared by MLA

Year-to-September sheepmeat exports to the UK



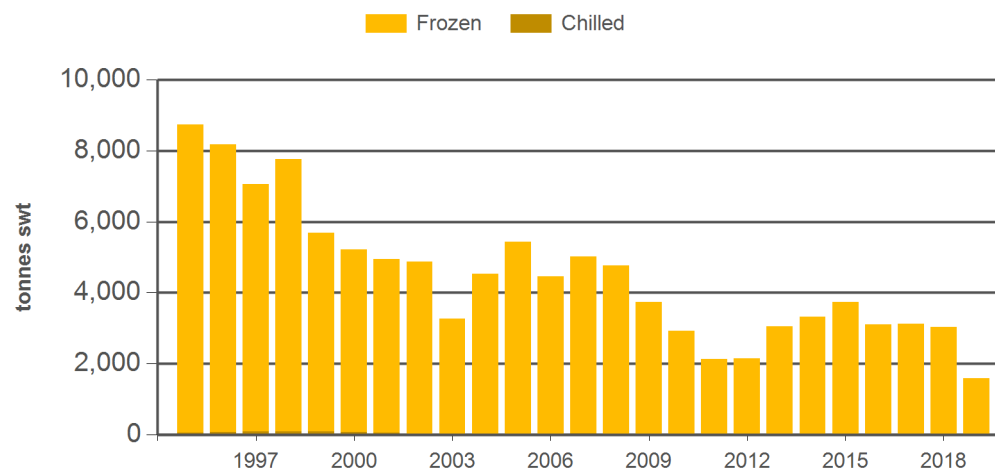
Source: DAWR, Prepared by MLA

Year-to-September lamb exports to the EU



Source: DAWR, Prepared by MLA

Year-to-September mutton exports to the EU



Source: DAWR, Prepared by MLA

Historical sheepmeat exports to the European Union (UK inclusive) - Calendar year totals

Volume (tonnes swt)	2004	2005	2006	2007	2008	2009	2010	2011	2012	2013	2014	2015	2016	2017	2018	2019 YTD	Y-O-Y % chg.
Total	19,035	18,224	18,827	19,734	19,015	19,099	16,893	16,458	15,852	16,735	18,758	16,195	16,471	15,454	15,295	7,629	-22
Lamb	12,210	10,592	11,808	12,734	11,581	13,730	11,951	12,930	12,129	11,747	14,042	10,656	11,512	10,281	10,008	6,042	-11
Mutton	6,825	7,632	7,020	7,000	7,434	5,370	4,941	3,528	3,723	4,988	4,716	5,539	4,959	5,174	5,288	1,587	-48

Historical sheepmeat exports to the United Kingdom - Calendar year totals

Volume (tonnes swt)	2004	2005	2006	2007	2008	2009	2010	2011	2012	2013	2014	2015	2016	2017	2018	2019 YTD	Y-O-Y % chg.
Total	13,663	13,341	13,604	14,643	13,058	13,826	13,151	11,426	12,296	13,354	14,832	12,921	12,378	10,927	9,698	4,944	-22
Lamb	8,309	7,601	8,185	9,105	7,104	9,384	8,754	8,780	9,016	9,124	10,561	7,806	7,950	6,567	5,691	3,747	-8
Mutton	5,354	5,740	5,418	5,539	5,954	4,442	4,397	2,646	3,279	4,230	4,271	5,115	4,428	4,360	4,006	1,196	-46

Source: DAWR. YTD = Calendar year-to-September. SWT = Shipped weight. For further information email globalindustryinsights@mla.com.au.